



## ANTARCTIC EXPRESS: CRUISE SOUTH, FLY NORTH

If you're looking for a more efficient Antarctic experience, this is it. Venture south, crossing the infamous Drake Passage and experience the first sighting of Antarctica with your fellow shipmates. After your penguin, seal, whale, iceberg and glacier cravings have been satisfied you'll take the relaxing way home by flying from King George Island to Punta Arenas, Chile. In brief: The excitement of a southbound Drake Passage crossing. The speed and convenience of a flight back to South America. All the Antarctic Peninsula highlights. Lecturers and specialists deliver presentations on geology and animal life.



### ITINERARY

#### Day 1 – Ushuaia, Argentina

This quaint city at the southernmost tip of South America is your gateway to Antarctica. The city itself provides a wide range of jewelry shops, cafés, gear shops and restaurants to explore before your voyage. Outside the city, snow-capped mountains and hiking in Tierra del Fuego National Park offer ample adventure activities if you enjoy exploring nature.

#### Day 2 - Embarkation Day

You will embark in the afternoon, with a journey through the picturesque Beagle Channel. Be sure to keep your eyes peeled and be out on deck, as the channel is home to a wide variety of wildlife including seabirds and seals. Rainbows are common



## The Small Cruise Ship Collection

[www.small-cruise-ships.com](http://www.small-cruise-ships.com)

[small-cruise-ships.com](http://small-cruise-ships.com)

[info@small-cruise-ships.com](mailto:info@small-cruise-ships.com)

here too, creating a great photographic opportunity to kick off the start to your Antarctic adventure.

### Day 3-4 - Crossing the Drake Passage

Legendary for its high winds and rolling seas, you may get lucky and have surprisingly calm seas. Spend your time in the lounge or chatting with your fellow travelers. As you develop your sea legs during the crossing, our Expedition Team will begin their series of presentations to help prepare you for your upcoming Zodiac and land excursions. You officially enter Antarctica when your ship crosses the Antarctic Convergence, a biological boundary that fluctuates around 60° south.

### Days 5 to 7 – Antarctic Peninsula and South Shetland Islands

Icebergs are the first attractions that welcome you to Antarctica. Massive floating bergs become more common as you get closer to land and you catch your first glimpse of the Peninsula, with its grand snow-covered mountains. In addition to spotting icebergs, you'll likely spot Adélie penguins chilling out on ice floes and minke or humpback whales feeding and swimming in the frigid waters. As soon as possible, the Zodiacs will be readied for your first landing in the South Shetland Islands and Antarctic Peninsula. Experiencing this immense wilderness up close for the first time can be a numbing experience. The silence is great, the vastness is even greater. Thankfully the noisy locals – penguins and seals – are there to remind you that this wonderful landscape isn't just a dream. Your Expedition Team will monitor the ice and weather conditions to determine which landing sites can be visited. With many sites to choose from, each expedition presents new opportunities for exploring the white continent by Zodiac and land. Swimming in Antarctica is perhaps the most adventurous option to tempt you, by taking a Polar Plunge in the water at Neko Harbour! A typical day in this

wildlife wonderland will be spent listening to calving glaciers at Petermann Island, watching penguins waddle around a beach, or taking a hike atop a hill for a panoramic view of Port Lockroy. Whatever you prefer, the photographic opportunities are endless.

### Day 8 – Disembarkation and Fly to Punta Arenas

As the ship turns north, you'll say goodbye to the penguins, as well as many of your shipmates. With only the Drake Passage ahead, you'll disembark and enjoy a bit of time on King George Island before flying off to Punta Arenas, Chile. Once you're in Punta Arenas, we'll transfer you from the airport to your hotel, where you're free to explore and enjoy a final dinner out.

### Day 9 – Depart for Home

Depart for home. Important reminder: Embracing the unexpected is part of the legacy – and excitement – of expedition travel. There are no guarantees that we can achieve everything we set out to accomplish. A measure of flexibility is something all of us must bring to a voyage. There are nearly 200 recognized sites in the Antarctic Peninsula and South Shetlands and the places mentioned above may be changed to others equally as interesting.

The Small Cruise Ship Collection  
[www.small-cruise-ships.com](http://www.small-cruise-ships.com)

01432 507 280 (within UK)

[info@small-cruise-ships.com](mailto:info@small-cruise-ships.com) | [small-cruise-ships.com](http://small-cruise-ships.com)





The Small Cruise  
Ship Collection

www.small-cruise-ships.com

small-cruise-ships.com

info@small-cruise-ships.com

## YOUR SHIP: WORLD EXPLORER

<b>YOUR SHIP:</b>	<b>World Explorer</b>
<b>VESSEL TYPE:</b>	<b>Expedition Ship</b>
<b>LENGTH:</b>	<b>126 metres</b>
<b>PASSENGER CAPACITY:</b>	<b>176</b>
<b>BUILT/REFURBISHED:</b>	<b>2017</b>

Distinct and comfortable, refined and roomy—these attributes and more describe World Explorer. Not only will it be among our fastest ships, it will also be one of our finest, with six tiers of deluxe accommodation. The personal space is exceptional. Every cabin has either a private walk-out or Juliet balcony for direct ocean views. World Explorer also delivers plenty of public areas to unwind in after a day outdoors, including the glass-domed Observation Lounge for quiet contemplation and full skyline views, the Explorer Lounge for a drink and a chat, and the library for more intimate relaxing and reading. Presentations and discussions are facilitated in a dedicated lecture theatre. Health and wellness facilities feature an outdoor running track, a small gym and a sauna, plus a spa with change rooms, showers and lockers. For the active adventurers, add-ons include kayaking, camping and stand-up paddleboarding. Blending high design with total functionality, World Explorer is all set to be your home away from home on the seas. Cabin: \- All cabins have exterior views and private bathroom facilities \- TV and safe in every cabin \- Individual temperature controls \- Electrical supply: 220v Aboard: \- Chef-prepared meals (all meals and daily snack included) \- One dining room with

unreserved seating \- Bar staffed by a professional bartender serving a selection of soft drinks, juices, liquors, spirits, beer and wine, which can be charged to your shipboard account \- Comfortable lounge area for reading or relaxing with a cup of coffee \- Observation decks for spotting wildlife and enjoying the ever-changing polar landscape \- Polar library stocked with a large collection of polar books, and games \- Gym \- Pool & sauna \- Spa facilities and wellness program \- Lecture theatre \- Polar Boutique \- Ship-to-shore satellite communications with email and wireless Internet access Activities: \- Zodiac Cruising (included) \- Kayaking (additional charge) \- Camping (additional charge) \- Standup Paddleboarding



(additional charge)



The Small Cruise  
Ship Collection

www.small-cruise-ships.com

01432 507 280 (within UK)

info@small-cruise-ships.com | small-cruise-ships.com



## The Small Cruise Ship Collection

[www.small-cruise-ships.com](http://www.small-cruise-ships.com)



[small-cruise-ships.com](http://small-cruise-ships.com)

[info@small-cruise-ships.com](mailto:info@small-cruise-ships.com)

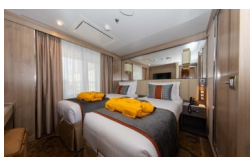
### INSIDE YOUR SHIP

Deluxe Suite



Infinity Suite

Owners Suite



Superior Suite

Triple Cabin

Veranda Suite



The Small Cruise Ship Collection

[www.small-cruise-ships.com](http://www.small-cruise-ships.com)

01432 507 280 (within UK)

[info@small-cruise-ships.com](mailto:info@small-cruise-ships.com) | [small-cruise-ships.com](http://small-cruise-ships.com)



## The Small Cruise Ship Collection

[www.small-cruise-ships.com](http://www.small-cruise-ships.com)



[small-cruise-ships.com](http://small-cruise-ships.com)

[info@small-cruise-ships.com](mailto:info@small-cruise-ships.com)

## PRICING

03-Dec-2025 to 12-Dec-2025

Infinity Suite	£15795 GBP pp
Veranda Suite	£15795 GBP pp
Triple Cabin	£13495 GBP pp
Owners Suite	£23595 GBP pp
Deluxe Suite	£22095 GBP pp
Superior Suite	£20495 GBP pp



The Small Cruise Ship Collection

[www.small-cruise-ships.com](http://www.small-cruise-ships.com)

01432 507 280 (within UK)

[info@small-cruise-ships.com](mailto:info@small-cruise-ships.com) | [small-cruise-ships.com](http://small-cruise-ships.com)