



## The Small Cruise Ship Collection

[www.small-cruise-ships.com](http://www.small-cruise-ships.com)



[small-cruise-ships.com](http://small-cruise-ships.com)

[info@small-cruise-ships.com](mailto:info@small-cruise-ships.com)

## NORWEGIAN ROUND VOYAGE

Twelve days - a thousand memories Get close to the Norwegian nature and communities on board Havila's coastal express. Every single nautical mile along the coastal cruise from Bergen to Kirkenes and back is filled with new experiences. The mountains are immutable, but the weather and the light change constantly, transforming the colours and appearance of the landscape. Here, you will encounter the soft grey of the rain, the crackling green of the Northern Lights or the golden glow of the midnight sun. Along the coast, tiny fishing villages shelter from the fierce Atlantic breakers, while larger coastal towns nestle in the narrow space between wild mountains and the seashore.



### ITINERARY

Day 1 Port: Bergen

The journey starts in Bergen, the capital of western Norway, with



The Small Cruise Ship Collection

[www.small-cruise-ships.com](http://www.small-cruise-ships.com)

**01432 507 280** (within UK)

[info@small-cruise-ships.com](mailto:info@small-cruise-ships.com) | [small-cruise-ships.com](http://small-cruise-ships.com)





## The Small Cruise Ship Collection

[www.small-cruise-ships.com](http://www.small-cruise-ships.com)



[small-cruise-ships.com](http://small-cruise-ships.com)

[info@small-cruise-ships.com](mailto:info@small-cruise-ships.com)

the colourful and UNESCO-listed warehouses in Bryggen. Take the funicular railway, Fløibanen, up to one of the lookout points, sample the seafood at the fish market or take a stroll through the narrow streets and along the quays of the lively harbour. Bergen is the gateway to the Norwegian fjords and the start of your coastal adventure.

Day 2 Ports:  
Florø-Måløy-Torvik-Ålesund-Geiranger\*/Hjørundfjorden\*\*-Ålesund-Molde

After the first night on board, you can start your day by waving to the Havila Voyages headquarters just off Torvik. Ålesund, is renowned for its art nouveau architecture with beautiful brick houses and warehouses. In the summer, you can continue to the UNESCO World Heritage Site of Geiranger Fjord, which has steep mountainsides and dramatic waterfalls.

\*Geiranger visited 01.06-31.08

\*\*Hjørundfjorden/Urke visited 01.09-31.10

Day 3 Ports: Kristiansund - Trondheim - Rørvik

It is morning when we dock in the historic city of Trondheim, which was founded over a thousand years ago. Nidaros Cathedral is the landmark of the city; it is Norway's national shrine and one of the largest cathedrals in Northern Europe. After our visit here, the voyage continues out into the fjord, into an abundant archipelago and heads for northern Norway.

Day 4 Ports: Brønnøysund - Sandnessjøen - Nesna - Ørnes - Bodø - Stamsund - Svolvær

On this stretch, we mark crossing the Arctic Circle with a ceremony and continue onward into the Arctic regions. It means midnight sun in the summer, while winter days are merely a shade less dark than night-time and, possibly, Northern Lights in the evenings. Nature is powerful with northern Scandinavia's largest glacier, the world's strongest tidal current and encounters with the majestic sea eagle. In the evening, Lofoten's fishing villages, steep mountains and Vikings await.

Day 5 Ports: Stokmarknes - Sortland - Risøyhamn - Harstad - Finnsnes - Tromsø - Skjervøy

The voyage continues on through narrow fjords and past wild mountains to Tromsø, a city characterised by hunting and fishing, polar expeditions and courage. Now you have also reached the land of the Sami, Norway's indigenous people. Meeting the Sami and their reindeer while hearing about the Sami culture is a unique experience you will remember.

Day 6 Ports: Hammerfest - Havøysund - Honningsvåg - Kjøllefjord - Mehamn - Berlevåg

As far north as you can get - by land and sea. For many, the visit to the North Cape is a high point and a goal for voyages along the Norwegian coast. Up here in the polar landscape, nature is at its harshest and most desolate, but between bare plains and rugged cliffs people cling on and reap nature's bounty. You can also have a taste of the catch. How about some king crab?

Dag 7 Ports: Båtsfjord - Vardø - Vadsø - Kirkenes



The Small Cruise Ship Collection

[www.small-cruise-ships.com](http://www.small-cruise-ships.com)

01432 507 280 (within UK)

[info@small-cruise-ships.com](mailto:info@small-cruise-ships.com) | [small-cruise-ships.com](http://small-cruise-ships.com)





## The Small Cruise Ship Collection

[www.small-cruise-ships.com](http://www.small-cruise-ships.com)



[small-cruise-ships.com](http://small-cruise-ships.com)

[info@small-cruise-ships.com](mailto:info@small-cruise-ships.com)

You are now as far east on your voyage as you can go. The border with Russia is only a few kilometres away, and the road signs in Kirkenes are in Norwegian and Russian. You can go as far as the border on one of our excursions, or how about a visit to the Snowhotel where everything is made of ice and snow?

Day 8 Ports: Mehamn - Kjøllefjord - Honningsvåg - Havøysund - Hammerfest - Øksfjord - Skjervøy - Tromsø

The polar landscape changes as we sail towards the west and south again. The great expanses are replaced by steep peaks, and in the evening we sail into Tromsø. You can take a stroll in the midnight sun or under the Northern Lights and explore the nightlife of the city dubbed "The Paris of the North".

Day 9 Finnsnes - Harstad - Risøyhamn - Sortland - Stokmarknes - Svolvær - Stamsund

We return to the wild, idyllic Lofoten Islands. Beneath the jagged mountains lie chalky white sandy beaches and fishing villages with a vibrant fishing industry and locals using the coastal ships for everyday trips and transport. If the weather permits, we will enter the narrow Trollfjord. There is a strong possibility of spotting sea eagles here.

Day 10 Bodø - Ørnes - Sandnessjøen - Brønnøysund - Rørvik

Now we have come so far south that we're crossing the Arctic

Circle and sailing away from the polar night and the sunlit nights. But you can still see the Northern Lights in the winter, and it is never completely dark during the summer nights. Here you sail past a myriad of small islands, islets and skerries and past the special mountain, Torghatten, which has a hole in the middle. If you wish, you can also go on the trip to the mountain and enter the hole.

Day 11 Trondheim - Kristiansund - Molde - Ålesund

We sail through the wide Trondheim fjord that is bounded by rolling farmland on both sides and return to the coast and the open sea. You can disembark in Kristiansund and be driven along the Atlantic Ocean Road, which has been called the world's most beautiful drive. The road meanders along islets and skerries, and afterwards you can re-embark in Molde.

Day 12 Torvik - Måløy - Florø - Bergen

The last day of the tour takes you through a diverse coastal landscape of bare rocky mountains and a maze of sounds and waterways between many islands. The great fjords and glaciers are situated inland. Bergen awaits at the end of the voyage. We hope you have many good memories from your journey along the Norwegian coast with Havila Voyages, and we look forward to seeing you again.

Please Note:

Itineraries are subject to change.



The Small Cruise Ship Collection

[www.small-cruise-ships.com](http://www.small-cruise-ships.com)

01432 507 280 (within UK)

[info@small-cruise-ships.com](mailto:info@small-cruise-ships.com) | [small-cruise-ships.com](http://small-cruise-ships.com)





## The Small Cruise Ship Collection

[www.small-cruise-ships.com](http://www.small-cruise-ships.com)



[small-cruise-ships.com](http://small-cruise-ships.com)

[info@small-cruise-ships.com](mailto:info@small-cruise-ships.com)

## YOUR SHIP: CASTOR, CAPELLA, POLARIS OR POLLUX

### YOUR SHIP:

**Castor, Capella, Polaris or Pollux**

### VESSEL TYPE:

### LENGTH:

### PASSENGER CAPACITY:

### BUILT/REFURBISHED:

The Newest, Most Eco-Friendly Ships on the Norwegian coastal route. Havila's coastal cruise ship will be home from home for a little while and you can relax and enjoy it. Cruise on the ships with decor that reflects Norwegian landscapes including the sea, the sky, mountains and glaciers. Natural materials and Nordic design creates a warm, genuine and unpretentious atmosphere, in which you are sure to feel at ease. You can enjoy the scenery gliding by outside from the ship's many public areas. Comfortable seats and panoramic windows give you the best possible views of the Norwegian coastline. Promenade deck and viewpoint If you want to feel the wind in your hair and inhale some good sea air, there's the outer deck and the viewpoint in the bow, or the promenade on Deck 8, that is long enough for a proper walk. Observation lounge The observation lounge on the top deck, Deck 9, has recliners under a glass roof, where you can look at the Northern Lights, the star-studded night sky or the midnight sun during the summer. The gym The machines in the gym are arranged in front of the window so that you can train and watch the passing landscape at the same time. Shopping Find unique clothes, books or local specialities in the shop on Deck 6, in the middle of the ship. Jacuzzi Enjoy the powerful jets

of hot water in the jacuzzi on the quarterdeck while looking out over the mountains and fjords. Sauna There is a sauna on the ships in the cloakroom area attached to the jacuzzis on Deck 8. Relax chairs Separate room with relax chairs for those who are not travelling far and do not need their own cabin. Cabins and suites Large cabins with Norwegian quality and design, where materials and colours reflect the landscape through which you will be sailing. Cafes and restaurants The ship has two restaurants and a cafe. The menus feature locally sourced food and the best that Norway has to offer. Facts about our Vessels The world's largest battery packs Four hours' sailing with zero emissions Energy-efficient hull design Locally sourced ingredients Heat recovery from the sea and cooling water Charging current from hydropower at the quay Liquid natural gas that cuts Co2 emissions by 25 % NOx emissions



reduced by 90%



The Small Cruise Ship Collection

[www.small-cruise-ships.com](http://www.small-cruise-ships.com)

**01432 507 280** (within UK)

[info@small-cruise-ships.com](mailto:info@small-cruise-ships.com) | [small-cruise-ships.com](http://small-cruise-ships.com)





# The Small Cruise Ship Collection

www.small-cruise-ships.com



small-cruise-ships.com

info@small-cruise-ships.com

## INSIDE YOUR SHIP

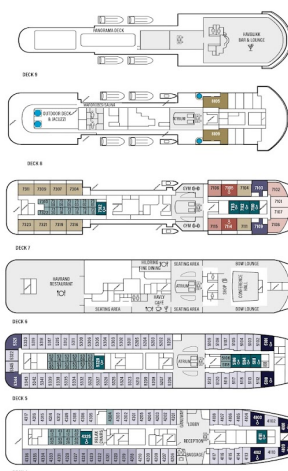
### OUR NEW ECO-FRIENDLY SHIP

Enjoy silence, variation and comfort on board Havila Voyages. With our ships you can explore the world's most beautiful coast from the world's most eco-friendly vessels.

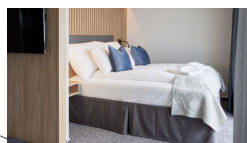
#### SHIP'S SPECIFICATIONS HAVILA CAPELLA & HAVILA CASTOR

TOTAL PASSENGERS ..... CAPACITY: 440  
CABINS ..... 220 CABINETS  
CARGO ..... 200 TONS  
LENGTH ..... 120 M  
WIDTH ..... 22.0 M  
MAX. SPEED ..... 14.5 KNOTS  
RANGE ..... 1000  
SHIPNAME ..... HAVILA CAPELLA & HAVILA CASTOR

- SEASIDE PUBLIC SPACES
- WATER
- WATER ACCESSIBLE
- SEASIDE SUPERIOR DOUBLE
- SEASIDE SUPERIOR TWIN
- SEASIDE DELUXE
- SEASIDE SUPERIOR ACCESSIBLE
- PANORAMIC SUPERIOR
- PANORAMIC DELUXE
- PANORAMIC DELUXE
- PANORAMIC DELUXE ACCESSIBLE
- SEASIDE SUITES
- SEASIDE SUITES

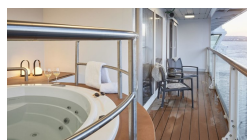
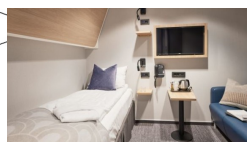


### Balcony Deluxe From



### Interior Accessible. From

### Interior. From



### Lighthouse Suite. From

### Panoramic Corner Mini Suite. From

### Seaview Deluxe. From

### Seaview Superior Accessible. From

### Panoramic Superior/Deluxe. From

### Seaview King. From

### Seaview Superior from



The Small Cruise Ship Collection

www.small-cruise-ships.com

01432 507 280 (within UK)

info@small-cruise-ships.com | small-cruise-ships.com





# The Small Cruise Ship Collection

www.small-cruise-ships.com



small-cruise-ships.com

info@small-cruise-ships.com

## PRICING

### 19-Jul-2025 to 30-Jul-2025

Interior. From £2023 GBP pp

### 10-Aug-2025 to 21-Aug-2025

Interior. From £1851 GBP pp

### 01-Sep-2025 to 12-Sep-2025

Interior. From £1792 GBP pp

### 28-Sep-2025 to 09-Oct-2025

Seaview Superior. From £2861 GBP pp

### 09-Oct-2025 to 20-Oct-2025

Interior. From £1556 GBP pp

### 28-Nov-2025 to 09-Dec-2025

Interior. From £1259 GBP pp

### 09-Dec-2025 to 20-Dec-2025

Interior. From £1259 GBP pp

### 28-Dec-2025 to 08-Jan-2026

Interior. From £1330 GBP pp

Seaview Superior from £2496 GBP pp

### 13-Jan-2026 to 24-Jan-2026

Interior. From £1357 GBP pp

### 10-Feb-2026 to 21-Feb-2026

Interior. From £1595 GBP pp

### 18-Mar-2026 to 29-Mar-2026

Lighthouse Suite. From £8502 GBP pp

Balcony Deluxe From £5307 GBP pp

Panoramic Superior/Deluxe.  
From £4583 GBP pp

Seaview Superior Accessible.  
From £2525 GBP pp

Seaview Superior. From £2525 GBP pp

Interior Accessible. From £1486 GBP pp

Interior. From £1486 GBP pp

Seaview King. From £2899 GBP pp

### 26-Mar-2026 to 06-Apr-2026

Interior. From £1654 GBP pp

### 03-Apr-2026 to 14-Apr-2026

Seaview Superior. From £2149 GBP pp

### 25-Apr-2026 to 06-May-2026

Interior. From £1535 GBP pp

### 09-May-2026 to 20-May-2026

Interior. From £1535 GBP pp

### 14-May-2026 to 25-May-2026

Interior. From £1535 GBP pp

Seaview Superior from Contact us

Seaview Deluxe. From Contact us

### 08-Jun-2026 to 19-Jun-2026

Interior. From £2069 GBP pp



The Small Cruise Ship Collection

www.small-cruise-ships.com

01432 507 280 (within UK)

info@small-cruise-ships.com | small-cruise-ships.com





## The Small Cruise Ship Collection

[www.small-cruise-ships.com](http://www.small-cruise-ships.com)



[small-cruise-ships.com](http://small-cruise-ships.com)

[info@small-cruise-ships.com](mailto:info@small-cruise-ships.com)

### 14-Jul-2026 to 25-Jul-2026

Interior. From	£2069 GBP pp
----------------	--------------

### 27-Aug-2026 to 07-Sep-2026

Interior. From	£1891 GBP pp
----------------	--------------

Panoramic Corner Mini Suite. From	£5043 GBP pp
--------------------------------------	--------------

### 10-Sep-2026 to 21-Sep-2026

Interior. From	£1832 GBP pp
----------------	--------------

### 26-Oct-2026 to 06-Nov-2026

Interior. From	£1595 GBP pp
----------------	--------------

### 12-Nov-2026 to 23-Nov-2026

Interior. From	£1476 GBP pp
----------------	--------------

### 23-Dec-2026 to 03-Jan-2027

Interior. From	£1595 GBP pp
----------------	--------------



The Small Cruise  
Ship Collection

[www.small-cruise-ships.com](http://www.small-cruise-ships.com)

**01432 507 280** (within UK)

[info@small-cruise-ships.com](mailto:info@small-cruise-ships.com) | [small-cruise-ships.com](http://small-cruise-ships.com)