



## SOUTH GEORGIA & THE FALKLAND ISLANDS

Combine the Falkland Islands (Malvinas) and South Georgia with this 17-day expedition starting from Punta Arenas, Chile. In the Falklands and enjoy watching rockhopper and gentoo penguins in their native habitat. From your zodiac spot Black-browed albatrosses and petrels high above. Hike into the local settlements and meet the people who have made this island home for generations. From there, set sail for South Georgia and its mountains, which are permanently covered in thick layers of ice and snow. On this island, wildlife is king. Visit one of the world's largest king penguin colonies and watch elephant seals relaxing on the shores. As we sail from bay to bay, watch out for whales and beautiful seabirds flying overhead.



### ITINERARY

#### Day 1: Punta Arenas, Embarkation

From 9:00 hrs., make your way to Explorers House in Punta Arenas and enjoy the facilities. At 16:00 hrs., a group transfer will take you to the port for embarkation. As we sail along the Strait of Magellan, our Expedition Team will introduce the history of this fabled sea route.



## The Small Cruise Ship Collection

[www.small-cruise-ships.com](http://www.small-cruise-ships.com)

[small-cruise-ships.com](http://small-cruise-ships.com)

[info@small-cruise-ships.com](mailto:info@small-cruise-ships.com)

### Day 2: At Sea

Enjoy the ship's hospitality as we make our way to the Falklands (Malvinas). Our engaging series of lectures and presentations begin.

### Day 3: Saunders Island, Carcass Island

We enjoy the long white-sand beach during a morning visit to Saunders Island. A wilderness experience, the main attractions are rockhopper penguins, nesting black-browed albatross, and sub-Antarctic gentoo penguins. In the afternoon, we visit Carcass Island. There is an option for an easy hike to the settlement, bird watching, and a typical Falklands tea experience.

### Day 4: Port Stanley

Join our expedition team on guided walking tours of Port Stanley or Gipsy Cove. Or explore on your own and absorb the atmosphere, grabbing lunch at the local pub, visiting the maritime museum, the church, hunting for souvenirs, or walking down Ross Road, paying tribute at the war memorials at the waterfront.

### Day 5 - 6: At Sea

As we sail towards South Georgia, attend presentations on the history and fauna of the archipelago. In the company of expert guides, watch for wildlife from the lounge or from the outside decks. You may spot magnificent seabirds, such as albatrosses and petrels, as well as different species of whales.

### Day 7: Elsehul Bay

Depending on sea conditions over the previous days, arrival is planned for the afternoon. Provided we receive approval from the South Georgia government, we plan to do an evening Zodiac

cruise at Elsehul Bay.

### Day 8: Grytviken, Fortuna Bay

Our first landing is at Grytviken. We clear Customs and then visit the historical site with the museum and Ernest Shackleton's grave. We land at Fortuna Bay / Stromness in the afternoon to see king penguins. Here we learn more about Shackleton and his expedition, and there is also an optional 2-3 hour "Shackleton walk."

### Day 9: Gold Harbour, Cooper Bay

In the morning, we plan a landing at Gold Harbour, a spectacular location with king penguins, elephant seals, and hanging glaciers. There are also sooty albatrosses here. In the afternoon and on a Zodiac cruise, we visit Cooper Bay to see macaroni penguins.

### Day 10: St Andrews Bay, Ocean Harbour

St Andrews Bay is the destination of our morning excursion. The highlights here are a shipwreck and the remains of the whaling industry. We see the largest king penguin colony and elephant seal bulls. We plan a Zodiac cruise in the afternoon and landing at Ocean Harbour.

### Day 11: Prion Island, Salisbury Plain

In the morning, we plan to visit Prion Island to see the nesting wandering albatross. In the afternoon, we head to Salisbury Plain for more king penguins and stunning landscapes.

### Day 12 - 14: At Sea

Our education program continues as we make our way back to the Falkland Islands (Islas Malvinas).

### Day 15: Bleaker Island



Evening landing at Bleaker Island, a natural reserve with a famous bird area featuring a large variety of birds.

Day 16: At Sea

Day 17: Punta Arenas, Disembarkation

Upon arrival at Punta Arenas, we disembark and take a group transfer to the town center, where the expedition will end. Explorers House remains available to you for the day.

Please Note:

Itineraries are subject to change.





## The Small Cruise Ship Collection

[www.small-cruise-ships.com](http://www.small-cruise-ships.com)



[small-cruise-ships.com](http://small-cruise-ships.com)

[info@small-cruise-ships.com](mailto:info@small-cruise-ships.com)

## YOUR SHIP: MAGELLAN EXPLORER

### YOUR SHIP:

**Magellan Explorer**

### VESSEL TYPE:

### LENGTH:

### PASSENGER CAPACITY:

### BUILT/REFURBISHED:

MV Magellan Explorer features 50 passenger suites and cabins in five categories of accommodation, including dedicated single cabins. The cabins are very spacious, ranging in size from 40 m<sup>2</sup> (440 sq. ft.) to 20 m<sup>2</sup> (220 sq. ft.). All double cabins have two twin beds that can be configured as one queen-size bed, offering great flexibility to our guests. 42 cabins feature a large window and a private balcony, while 8 cabins feature a porthole. All cabins feature a private bathroom and a sitting area. Public areas include a large, forward-facing observation lounge, an observation deck, a dining room that accommodates all guests and expedition staff in a single sitting, two meeting rooms, a gift shop, a protected outdoor barbecue area, a gym, and a sauna. The bow of the ship is accessible to guests to offer expansive views during exploration. Optional adventure activities, such as kayaking and snowshoeing, are available. Specific measures have been taken to minimize MV Magellan Explorer's carbon footprint, including state-of-the-art engines that meet MARPOL's stringent Tier III emission standards. To minimize fuel consumption, a waste heat recovery system recycles the heat produced by the ship's engines and repurposes it to power the ship's heating system and to warm

the water used on board.



The Small Cruise Ship Collection

[www.small-cruise-ships.com](http://www.small-cruise-ships.com)

**01432 507 280** (within UK)

[info@small-cruise-ships.com](mailto:info@small-cruise-ships.com) | [small-cruise-ships.com](http://small-cruise-ships.com)



# The Small Cruise Ship Collection

[www.small-cruise-ships.com](http://www.small-cruise-ships.com)



[small-cruise-ships.com](http://small-cruise-ships.com)

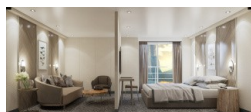
[info@small-cruise-ships.com](mailto:info@small-cruise-ships.com)

## INSIDE YOUR SHIP

Deluxe Veranda Cabin   PH Suite



Porthole Cabin



Suite

Triple Suite



Veranda Cabin



The Small Cruise Ship Collection

[www.small-cruise-ships.com](http://www.small-cruise-ships.com)

01432 507 280 (within UK)

[info@small-cruise-ships.com](mailto:info@small-cruise-ships.com) | [small-cruise-ships.com](http://small-cruise-ships.com)



# The Small Cruise Ship Collection

[www.small-cruise-ships.com](http://www.small-cruise-ships.com)



[small-cruise-ships.com](http://small-cruise-ships.com)

[info@small-cruise-ships.com](mailto:info@small-cruise-ships.com)

## PRICING

### 23-Sep-2024 to 09-Oct-2024

PH Suite	£12636 GBP pp
Veranda Cabin	£10266 GBP pp
Deluxe Veranda Cabin	£11056 GBP pp
Porthole Cabin	£7896 GBP pp
Suite	£20532 GBP pp
Triple Suite	£13426 GBP pp

### 09-Oct-2024 to 25-Oct-2024

Veranda Cabin	£10266 GBP pp
Suite	£20532 GBP pp
Porthole Cabin	£7896 GBP pp
PH Suite	£12636 GBP pp
Triple Suite	£13426 GBP pp
Deluxe Veranda Cabin	£11056 GBP pp



The Small Cruise Ship Collection

[www.small-cruise-ships.com](http://www.small-cruise-ships.com)

**01432 507 280** (within UK)

[info@small-cruise-ships.com](mailto:info@small-cruise-ships.com) | [small-cruise-ships.com](http://small-cruise-ships.com)