

The Small Cruise Ship Collection

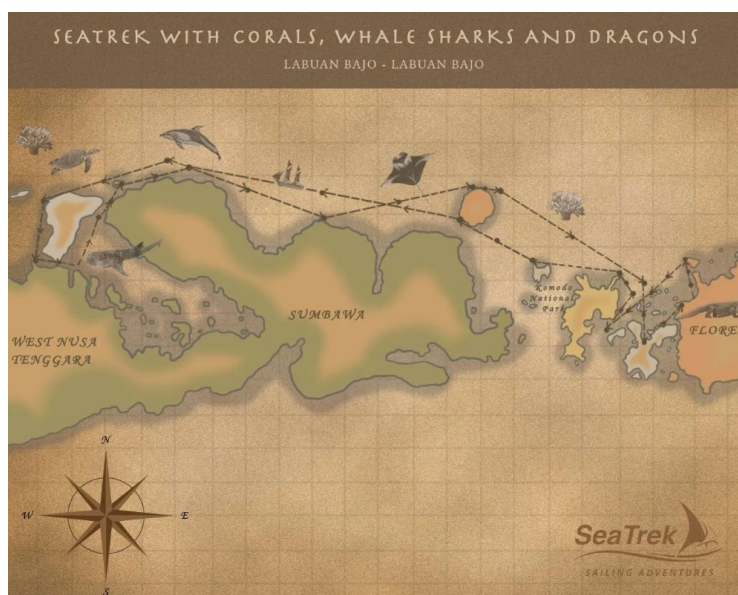
www.small-cruise-ships.com

small-cruise-ships.com

info@small-cruise-ships.com

WHALE SHARKS, CORALS & DRAGONS - INDONESIA ADVENTURE FROM KOMODO TO KOMODO

Do you want to feel your senses come alive as you walk with the ancient Komodo dragons, the world's largest lizard? Have you ever imagined the feeling of soaring weightlessly over a school of majestic giant manta rays? Would you like to experience the beauty of snorkelling above kaleidoscopic, colourful and diverse coral reefs? How about having that butterflies-in-your-stomach feeling while swimming with whale sharks, the largest but most gentle animals in the ocean? Or perhaps to just sit quietly and cradle your morning coffee as you breathe in the cool early morning ocean air while watching the sunrise over the stunning volcanic landscapes. If this sounds like you, then come fill your senses with nine days and eight nights of snorkelling, trekking, iconic wildlife encounters and tropical island exploration as we cruise between Bali and Komodo along Indonesia's Ring of Fire.



ITINERARY

DAY 1 - 2

-Taking the early morning flight from Bali, you will be met at the airport in Komodo by your tour leaders and be taken straight to your boat. And as you settle into your new home, we will head to our first snorkelling spot; a coral restoration project where you will see how the corals and fish populations have grown since they were first transplanted in 2014. -Go ashore on Komodo Island in search of the fearsome Komodo dragons, found only in the Komodo National Park. This is the world's largest lizard, growing up to a length of three metres and weighing up to approximately 70 kilograms. -Enjoy some magnificent

The Small Cruise Ship Collection

www.small-cruise-ships.com

01432 507 280 (within UK)

info@small-cruise-ships.com | small-cruise-ships.com



The Small Cruise Ship Collection

www.small-cruise-ships.com

small-cruise-ships.com

info@small-cruise-ships.com

snorkelling on some of the Komodo Park's best reefs. -Swim with manta rays as they feed on the current and circle the so-called cleaning stations, where small fish remove parasites from their skin. -Snorkel at a favourite hangout of sea turtles, where we will have a chance to swim with these gentle reptiles as they cruise along the shallow water of the reef.

DAY 3 - 4

-Wake up off the coast of a beautiful uninhabited island with a beach of pure white sand with some sparkles of powdered red coral, creating the effect of a "pink beach". We will spend the morning here, swimming, paddle boarding, and snorkelling on the beautiful coral reef that lies parallel to the beach. -Over lunch, we will cruise to a nearby active volcanic island where we will see a large wooden pinisi boat with the same pedigree and history of SeaTrek's very own ships being built on the beach. Walking around this small village, get a feel for their simple way of life, chat with the locals and maybe buy some handmade textiles as a souvenir. -Spend the day at a strange and mystical volcanic island with a sunken crater lake in its centre that was filled with saltwater when the nearby Mt Tambora catastrophically erupted in 1815. Here we will swim, kayak and paddleboard on the lake, and the more adventurous can go trekking around the crater rim. -Experience one of our famous SeaTrek beach BBQs under a night sky filled with millions of stars as you feast on the amazing local delicacies prepared by our chef, and all accompanied by live musical entertainment from our talented crew. -Another highlight of our visit to the island will be the sight of thousands of flying foxes that fly at dusk from the island to feed on the mainland.

DAY 5 - 6

-We will have chance for an early morning swim with whale sharks, the gentle giants of the sea. These massive but harmless animals have long congregated here in the bay but now, thanks to travellers like you, we have formed a mutually beneficial alliance with the local fisherman who have their traditional small floating fishing platforms in the bay that attract the sharks. We can't make any promises, as we don't have these wild animals on a leash, but fingers crossed we will see them. -Spend the day on a beach located on a small limestone island nearby, kayaking, swimming and snorkelling, and exploring the local karst formations. -We will cruise to Labuan Aji village on the island of Moyo to visit the village and walk to a scenic waterfall where we can bathe in the refreshing cool water.

DAY 7 - 8

-Enjoy a unique snorkelling experience where volcanic gasses escape in the form of bubbles from the sea floor among the corals, with the metallic black volcanic sand below being home to an abundance of very interesting invertebrates. -Entering the Komodo National Park again we will go drift snorkelling in one of the best and healthiest coral reefs in the park, and for those who want to take the land-adventure to another level, you can do a sunset hike up to a gorgeous viewpoint overlooking the other islands in the park. -Visit Rinca Island, which is well known for its diverse wildlife, and maybe spot dragons, monkeys, wild buffaloes and deer as well. From the top of the hills, the scenery is breath taking.

The Small Cruise
Ship Collection
www.small-cruise-ships.com

01432 507 280 (within UK)

info@small-cruise-ships.com | small-cruise-ships.com



The Small Cruise Ship Collection

www.small-cruise-ships.com

small-cruise-ships.com

info@small-cruise-ships.com

DAY 9

-After breakfast on our last day, we will take you on a scenic drive towards Melo Village, where you will witness the traditional Caci dance performance. Local strongmen perform a ritual whip-fight between two rivals in which the players, each armed with a rattan shield and a whip, will try to hit each other while dancing to the rhythm of traditional acoustic instruments. -After lunch on the boat, we will say farewell to the crew and your fellow shipmates as you disembark and continue onto your next destination.

Please Note:

Itineraries are subject to change.

The Small Cruise Ship Collection

www.small-cruise-ships.com

small-cruise-ships.com

info@small-cruise-ships.com

YOUR SHIP: KATHARINA

YOUR SHIP: Katharina

VESSEL TYPE:

LENGTH:

PASSENGER CAPACITY:

BUILT/REFURBISHED:

Katharina is a mix of traditional and modern design. Her hull and rigging are traditional, while the deck house and interior were custom designed to adapt to Western tastes of space, privacy and comfort. While Indonesian traditional sailing vessels are customarily referred to as Bugi Schooners, strictly speaking Katharina is rigged as a Ketch, the foremast being higher than the aft mast. The deck area of Katharina is dominated by the 25m tall main and top masts and a large central table around which we enjoy our meals alfresco. Just aft is the main lounge and bar, accessible on the port side. On top of this main cabin there is a sun deck, where you find several additional deck chairs and comfortable day beds. Below decks there are 4 double cabins (with one extra single upper berth) and 2 twin cabins (upper/lower berth). All cabins are air-conditioned (individually controlled) and have private bathrooms with warm and cold water. Obviously, we provide all hotel amenities you may require. Each cabin has a wardrobe, a built-in mini safe, individually controlled cooling systems and soft lightning. All cabins have their own private bathroom with shower and toilet. Unlike typical ship accommodation, your cabin provides ample space to store your stuff and still move about with ease. We

know from experience that during a cruise in the tropics some of our guests discover the pleasure of sleeping under the stars and there is plenty of room to sleep on the upper deck. Mattresses as well as light blankets are available for that purpose. Spacious twin shared cabins with twin bunk beds or double bed Each cabin has a private bathroom with toilet and hot shower Washbasin and soap toiletries in your cabin Cabins have individually controlled air conditioning Towels and beach towels that are regularly changed each cabin has an individual minisafe for valuables and travel documents Free tea, coffee and mineral water Excellent food and snacks (vegetarian food on request) Excellent wine selection, cold beer and other alcoholic drinks for sale Chilled towels and a welcome drink upon arrival Outdoor sleeping facilities Unlimited use of our snorkeling equipment and 2 sea canoes Television, DVD and music



The Small Cruise Ship Collection
www.small-cruise-ships.com

01432 507 280 (within UK)

info@small-cruise-ships.com | small-cruise-ships.com



The Small Cruise
Ship Collection

www.small-cruise-ships.com

small-cruise-ships.com

info@small-cruise-ships.com

centre in lounge



The Small Cruise
Ship Collection

www.small-cruise-ships.com

01432 507 280 (within UK)

info@small-cruise-ships.com | small-cruise-ships.com

The Small Cruise Ship Collection

www.small-cruise-ships.com

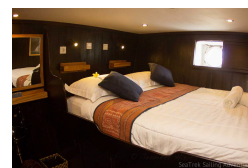
small-cruise-ships.com

info@small-cruise-ships.com

INSIDE YOUR SHIP



Stateroom





The Small Cruise Ship Collection

www.small-cruise-ships.com

small-cruise-ships.com

info@small-cruise-ships.com

PRICING

23-May-2024 to 31-May-2024

Stateroom	£4108 GBP pp
-----------	--------------

23-May-2024 to 31-May-2024

Stateroom	£4108 GBP pp
-----------	--------------

03-Jun-2024 to 11-Jun-2024

Stateroom	£4108 GBP pp
-----------	--------------

14-Jun-2024 to 22-Jun-2024

Stateroom	£4108 GBP pp
-----------	--------------

27-Jun-2024 to 05-Jul-2024

Stateroom	£4108 GBP pp
-----------	--------------

27-Jun-2024 to 05-Jul-2024

Stateroom	£4108 GBP pp
-----------	--------------

08-Jul-2024 to 16-Jul-2024

Stateroom	£4108 GBP pp
-----------	--------------

08-Jul-2024 to 16-Jul-2024

Stateroom	£4108 GBP pp
-----------	--------------

19-Jul-2024 to 27-Jul-2024

Stateroom	£4108 GBP pp
-----------	--------------

19-Jul-2024 to 27-Jul-2024

Stateroom	£4108 GBP pp
-----------	--------------

30-Jul-2024 to 07-Aug-2024

Stateroom	£4108 GBP pp
-----------	--------------

10-Aug-2024 to 18-Aug-2024

Stateroom	£4108 GBP pp
-----------	--------------

21-Aug-2024 to 29-Aug-2024

Stateroom	£4108 GBP pp
-----------	--------------

21-Aug-2024 to 29-Aug-2024

Stateroom	£4108 GBP pp
-----------	--------------

12-Apr-2025 to 20-Apr-2025

Stateroom	£4309 GBP pp
-----------	--------------

23-Apr-2025 to 01-May-2025

Stateroom	£4309 GBP pp
-----------	--------------

30-Apr-2025 to 08-May-2025

Stateroom	£4309 GBP pp
-----------	--------------

10-May-2025 to 18-May-2025

Stateroom	£4309 GBP pp
-----------	--------------

21-May-2025 to 29-May-2025

Stateroom	£4309 GBP pp
-----------	--------------

22-May-2025 to 30-May-2025

Stateroom	£4309 GBP pp
-----------	--------------

01-Jun-2025 to 09-Jun-2025

Stateroom	£4309 GBP pp
-----------	--------------

01-Jun-2025 to 09-Jun-2025

Stateroom	£4309 GBP pp
-----------	--------------



The Small Cruise Ship Collection

www.small-cruise-ships.com

small-cruise-ships.com

info@small-cruise-ships.com

12-Jun-2025 to 20-Jun-2025

Stateroom	£4309 GBP pp
-----------	--------------

20-Aug-2025 to 28-Aug-2025

Stateroom	£4309 GBP pp
-----------	--------------

22-Jun-2025 to 30-Jun-2025

Stateroom	£4309 GBP pp
-----------	--------------

ADDITIONAL CHARGES:

Fuel Surcharge 400 USD pp

06-Jul-2025 to 14-Jul-2025

Stateroom	£4309 GBP pp
-----------	--------------

06-Jul-2025 to 14-Jul-2025

Stateroom	£4309 GBP pp
-----------	--------------

17-Jul-2025 to 25-Jul-2025

Stateroom	£4309 GBP pp
-----------	--------------

17-Jul-2025 to 25-Jul-2025

Stateroom	£4309 GBP pp
-----------	--------------

28-Jul-2025 to 05-Aug-2025

Stateroom	£4309 GBP pp
-----------	--------------

28-Jul-2025 to 05-Aug-2025

Stateroom	£4309 GBP pp
-----------	--------------

09-Aug-2025 to 17-Aug-2025

Stateroom	£4309 GBP pp
-----------	--------------

09-Aug-2025 to 17-Aug-2025

Stateroom	£4309 GBP pp
-----------	--------------

16-Aug-2025 to 24-Aug-2025

Stateroom	£4309 GBP pp
-----------	--------------

20-Aug-2025 to 28-Aug-2025

Stateroom	£4309 GBP pp
-----------	--------------