

# The Small Cruise Ship Collection

www.small-cruise-ships.com

small-cruise-ships.com

info@small-cruise-ships.com

## 19 DAYS LUXURY AUSTRALIA & NEW ZEALAND CRUISE - AUCKLAND TO SYDNEY

This voyage takes in the very best of Australia and New Zealand. Embark from Auckland and immerse yourself in craggy coastal pearls such as Tauranga, Napier, Wellington, and Dunedin. Sail to an overnight spent savouring Hobart's natural wonders and exceptional cuisine. Two last stops in Geelong and Eden, along with deeply relaxing days at sea complete this perfect January escape.



### ITINERARY

Days 0 - 1 - Pre Cruise & Auckland

- \_ **\*\*Pre Cruise Benefits\*\*** \_
- \_ **\*\*Private Executive Transfers\*\*** \_
- \_ **\*\*International flights - Economy class\*\*** \_
- \_ **\*\*or Business Class upgrade\*\*** \_

The Small Cruise Ship Collection

www.small-cruise-ships.com

01432 507 280 (within UK)

info@small-cruise-ships.com | small-cruise-ships.com



## The Small Cruise Ship Collection

[www.small-cruise-ships.com](http://www.small-cruise-ships.com)

[small-cruise-ships.com](http://small-cruise-ships.com)

[info@small-cruise-ships.com](mailto:info@small-cruise-ships.com)

\_ \*\*Airport transfers\*\* \_

Blending beachy recreation with all the delights of a modern, diverse and thoroughly multicultural city, Auckland sits on the lucid blue-green waters of New Zealand's north island. Known as the 'City of Sails', its two harbours will tempt you with waterfront walks, and the chance to breathe fresh sea air deep into your lungs while absorbing spectacular views of Auckland's grand harbour bridge's span. Take in the true scale of Auckland's magnificent cityscape by ascending 192 metres to the Sky Tower, and looking out over the city's gleaming silver towers, which reflect on the abundant waters below. Views over the bay and adjacent islands await, and you can share elegant cocktails at this dizzying height, above the mingling yachts of Viaduct Harbour. Immerse yourself in the rich history and culture of the area at Auckland Art Gallery, Toi o Tmaki. Set beside tranquil fountains and handsomely landscaped flowerbeds of Albert Park, the French-Renaissance building houses New Zealand's most extensive art collection, and exhibits works from M ori and Pacific artists. New Zealand is world-renowned for its captivating natural scenery, and day trips across the sparkling bays, to nearby islands like Waiheke, Tiritiri Matangi, and Rangitoto, are always tempting. Discover lava caves, grape-laden vineyards and flourishing wildlife in the Hauraki Gulf's islands. You'll also find an exceptional 360-degree panorama over the city, to the horizon beyond, from the heights of ancient Mount Eden. The spectacular dormant volcano rises improbably from a city suburb, and also lends its name to Eden Park - the unusual, translucent stadium of New Zealand's mighty All Blacks.

Day 2 - Tauranga

Tauranga is New Zealand's sunny capital - with wide sweeping beaches and surfers curling across cresting waves. Climb to the top for spectacular views of the natural harbour, or take winding coastal footpaths to explore the unfolding scenery. An entry point to the vast indent of the Bay of Plenty, the volcanic peak of Mount Maunganui is a fittingly dramatic welcome. Brooding, geothermal energy creates spectacular natural attractions across this region, while plunging waterfalls, and fascinating Maori culture ensures that the Bay of Plenty has a lot to offer visitors. Said to receive New Zealand's highest amount of sunshine, the hanging kiwi, citrus fruit and avocados add an exotic touch to the area's landscape - especially around Te Puke. Vibrant teal and orange colours await at the stunning geothermal area of Whakarewarewa Thermal Reserve, where mud pools bubble and steam rises from the earth. There are more hot pools, and some of the country's best scenery, at Lake Rotoiti - where you can kayak across the smooth surface and enter a cave that glows gentle blue, with its darkened roof illuminated by glittering glow worms. Enter New Zealand's fantasy world, with a visit to some of the country's celebrated filming spots - which have featured as doubles for JRR Tolkien's Middle Earth's fantasy settings. Offshore, the wonderful White Island's volcanic cone peeks from the waves, and New Zealand's most active volcano certainly knows how to put on a show, belching out smoke across the water.

Day 3 - Gisborne

With a population of around 35,000 and located on the north

The Small Cruise Ship Collection  
[www.small-cruise-ships.com](http://www.small-cruise-ships.com)

01432 507 280 (within UK)

[info@small-cruise-ships.com](mailto:info@small-cruise-ships.com) | [small-cruise-ships.com](http://small-cruise-ships.com)





## The Small Cruise Ship Collection

[www.small-cruise-ships.com](http://www.small-cruise-ships.com)

[small-cruise-ships.com](http://small-cruise-ships.com)

[info@small-cruise-ships.com](mailto:info@small-cruise-ships.com)

island, Gisborne exudes history at every turn. Maori for "Great standing place of Kiwa", Kiwa was a leading figure aboard the Maori ancestral canoe, Takitimu, which ran aground in Gisborne around 1450 AD. After landing, Kiwa became a coastal guardian, eventually marrying Parawhenuamea, the keeper of the streams. The union point of three rivers and the first place to see the sun, the city is filled with light and laughter and gracefully squeezes surfer's beaches with the district's colonial past. Captain Cook made his first landfall here, John Harris set up his first trading station in the then village and today, Gisborne is the major centre of Maori cultural life. Suffice to say then that the city is a watery wonderland. With its picture perfect beaches, what savvy traveller does not want to add being among the first people in the world to say they have watched the sky change colour as the sun bursts from out of the sea. A place of nature, spectacular beach cliff views are all just part and parcel of everyday life here, and easy walks from the centre of town to the Titirangi Reserve will award you with yet more unbelievable 180° vistas from Poverty Bay to Gisborne City; stretch your eyes with the panorama, while stretching your legs on one of the many enjoyable walks. A perfect place to stroll, amble and wander, like much of New Zealand Gisborne keeps a healthy respect for history and nature and enjoys a very laid back feel.

#### Day 4 - Napier

Sip the fine wines of legendary producers, visit Cape Kidnappers' crowds of birdlife, and wander the stylish streets of the world's art deco capital, during your time in handsome Napier. Located on the huge arc of Hawke's Bay, Napier enjoys a generous Mediterranean style climate and a breezy cafe

culture. A green, outdoor town, wander Marine Parade, which borders the rich blue Pacific and invites you to stroll along a tree-lined two-mile seafront. Take the gentle hike up to Bluff Hill, for panoramic views over the lively Napier Port and out towards Cape Kidnappers - given its name following a clash between Captain Cook's settlers and the local Maori population. Here you'll encounter one of the world's largest mainland gannet colonies creating a colourful cacophony by the sea. Set on sheer cliffs, the golden-headed birds are an incredible sight, swirling overhead and dancing before you. The city's renowned Art Deco architecture glows in the sunshine of New Zealand's North Island. Built following the devastating 7.8 magnitude earthquake, which ripped through the region in 1931. The rebuild, in the architectural fashion of the time, has left an authentic treasure-trove of 30s style buildings. Grapes thrive in the warm, dry climate of Napier and Hawke's Bay, which is one of New Zealand's oldest wine regions. Swirl glasses in waterfront bars or head out to walk among the vineyards of pinot gris and syrah grapes, learning of the climate conditions that help add sophisticated flavour to every bottle.

#### Day 5 - Wellington

Sprawling around a hook-shaped peninsula, Wellington is a vibrant and energetic seaside capital. A compact, well-stocked city of buzzing bars and chatting cafes, New Zealand's capital is a bright and breezy place with an infectious, easy-going atmosphere. Known as the creative hub of the South Pacific, there are shows to see, art installations to enjoy, and rich flavours to savour here. The sounds of rare and beautiful birdlife fill the hills around the city, and the bush of the green belt

The Small Cruise Ship Collection  
[www.small-cruise-ships.com](http://www.small-cruise-ships.com)

01432 507 280 (within UK)

[info@small-cruise-ships.com](mailto:info@small-cruise-ships.com) | [small-cruise-ships.com](http://small-cruise-ships.com)



## The Small Cruise Ship Collection

[www.small-cruise-ships.com](http://www.small-cruise-ships.com)

[small-cruise-ships.com](http://small-cruise-ships.com)

[info@small-cruise-ships.com](mailto:info@small-cruise-ships.com)

provides easy-to-access sanctuary, strolls and cycle rides. The Botanical Gardens break up the buildings, even more, while an iconic, cherry-red cable car rumbles up Wellington's slope to the city's best viewpoint, looking out over the city's scenic harbour from above. Zealandia has provided an urban home for rare and endangered birdlife, bringing many species back from the brink. Varied museums cover everything from Maori traditions to earthquake simulations and even the real-life Kraken - a displayed colossal squid. Wellington is only New Zealand's third-biggest city, but spend some time here and you'll realise that's a blessing. Eminently strollable, you can stop in at countless cool cafes to top up your caffeine levels whenever your energy is flagging - the smell of a fresh artisan espresso is never far away. The wines grown nearby are revered, and the city's craft beers are also making waves. Wander the breezy waterfront, and admire the surfers riding the wind-whipped rollers of the self-proclaimed 'coolest little capital in the world'.

### Day 6 - Lyttelton (Christchurch)

New Zealand's 'Garden City' is a place of quiet streets, leafy parks and beautiful tree-lined boulevards. Christchurch has an unmistakable English flavour to it, and serves as the gateway to southern New Zealand's natural wonders. The rebuild of the country's oldest city continues apace - following the earthquakes that devastated it in 2011 - and the South Island's biggest city is now blossoming, having evolved into a confident and cultural powerhouse. Colourful street art adds an edge to the city, while shiny new bars and restaurants contribute to the sense of revitalisation and renewal. Visit museums, and take tours to learn more of the reconstruction, which has made

incredible progress in recent years. The old-time charm of a punt on the River Avon is still a quintessential Christchurch experience. Sail amid weeping willows drooping to the water, as you drift through a blur of colours in the botanical gardens. Surrounded by extinct volcanoes, soaring lakes, and the rolling farmlands of the Canterbury Plains, spectacular scenery sprawls around the city. Pay a visit to the Southern Alps' snow-covered peaks, the stunning hot pools and rushing streams of Hanmer Springs, or the Hector's dolphins who swim at Akaroa. A city that has faced immense challenges - both natural and manmade - over the last decade, it's hard not to feel inspired by Christchurch's defiant character and friendly people, who share an open and welcoming outlook that shines stronger than ever.

### Day 7 - Dunedin (Port Chalmers)

The south-easterly coast of New Zealand's wild southern island is a haven for outdoor adventures, with masses of raw scenic beauty and thrilling coastline. Heading the Otago Harbour, Dunedin is a cosmopolitan city of culture and architectural splendour, with a distinctly tartan flare. Settled by the Scots in 1848, the romantically misty valleys and moody landscapes, continue to capture the hearts of visitors to these distant shores. Searing bagpipes echo down the streets in the Edinburgh of the South, which wears its Scottish origins proudly. Gothic revival architecture is scattered liberally, including the magnificent university - with its glorious clocktower - and the city's grand cathedral. Head to the elegant Octagon to see the statue to Robert Burns, whose nephew was a city founder. The railway station is perhaps the pick of this city's many artistic structures. Its glowing gardens and pretty mosaics add extra detail to the

The Small Cruise Ship Collection  
[www.small-cruise-ships.com](http://www.small-cruise-ships.com)

01432 507 280 (within UK)

[info@small-cruise-ships.com](mailto:info@small-cruise-ships.com) | [small-cruise-ships.com](http://small-cruise-ships.com)





## The Small Cruise Ship Collection

[www.small-cruise-ships.com](http://www.small-cruise-ships.com)

[small-cruise-ships.com](http://small-cruise-ships.com)

[info@small-cruise-ships.com](mailto:info@small-cruise-ships.com)

elegant, gingerbread building. It's also the perfect jumping-off point for romantic rail adventures along the coastline. The melodramatic coastline of the Otago Peninsula boasts dramatic cliffs and sea-sprayed beaches, as well as an abundance of animals. Explore cliffs laced with tunnels and hidden walkways, to get you up close and personal with Yellow-eyed penguins. Sea lions and seals also sprawl out on windswept beaches, drifting in and out of indulgent dozes. The south island's second-largest city regularly receives a top-up of youthful energy thanks to its healthy student population. Not that Dunedin is lacking a distinctly quirky personality of its own, as showcased by the event where locals race thousands of chocolate orbs down the world's steepest street - Baldwin Street. Museums in the city tell of Chinese influences, as well as the stories of early Maori settlers. Round off an active day sampling a South Island institution - an icy beer from Speight's Brewery.

Days 8 - 10 - Day at sea

Days at sea are the perfect opportunity to relax, unwind and catch up with what you've been meaning to do. So whether that is going to the gym, visiting the spa, whale watching, catching up on your reading or simply topping up your tan, these blue sea days are the perfect balance to busy days spent exploring shore side.

Days 11 - 12 - Hobart, Tasmania

Mount Wellington's looming, cloud-wisped form is an ever-present sight as you explore booming Hobart, the cosmopolitan capital of Australia's most southerly state. A

former British penal colony, nowadays Australia's second-oldest city is a place to live the free and easy life. Encircled by dramatic cliffs, landscaped gardens and rolling vineyards, Hobart is also well stacked with cultural pursuits including museums, and respected - if controversial - galleries plastering new and old art to their walls. With fresh sea breezes and a fabulous location, Hobart is a creative place, where you can browse the produce of local artisans in Saturday's massive Salamanca Market - which draws visitors from all across Tasmania and beyond. Eat at waterfront restaurants, or rise up Mount Wellington's slopes to appreciate the remoteness of Hobart's location. From this elevated platform, you can look down across views of flowing forests, undulating mountains and endless ocean swallowing up the city. Further away, animal sanctuaries introduce you to the island's famous inhabitants, including the famous Tasmanian devil. Thirsty? Hobart has a long brewing tradition - so enjoy a refreshing ale poured from the country's oldest brewery. The climate's blend of generous sunshine and cool Antarctic breezes helps Hobart to produce its acclaimed wines, and thick clumps of pinot noir grapes hang from vineyards dotted along the valleys nearby. Taste the wines, accompanied by a platter of artisan cheese and sausage. Whiskey aficionados aren't left in the cold either, with international award-winning distilleries close by.

Day 13 - Day at sea

Days at sea are the perfect opportunity to relax, unwind and catch up with what you've been meaning to do. So whether that is going to the gym, visiting the spa, whale watching, catching up on your reading or simply topping up your tan, these blue

The Small Cruise Ship Collection  
[www.small-cruise-ships.com](http://www.small-cruise-ships.com)

01432 507 280 (within UK)

[info@small-cruise-ships.com](mailto:info@small-cruise-ships.com) | [small-cruise-ships.com](http://small-cruise-ships.com)



## The Small Cruise Ship Collection

[www.small-cruise-ships.com](http://www.small-cruise-ships.com)

[small-cruise-ships.com](http://small-cruise-ships.com)

[info@small-cruise-ships.com](mailto:info@small-cruise-ships.com)

sea days are the perfect balance to busy days spent exploring shore side.

### Day 14 - Geelong

At just one-hour south west of Melbourne along the Great Ocean Road, Geelong is known for its enviable position. The city's proximity to the capital (not to mention its welcoming waterfront on Port Phillip Bay) have made the city a magnet for Merlbourian weekenders in recent years, so expect a young, hip city vibe permeating the Geelong pavements. Geelong was known as an agricultural and pastoral town in the past. During the Australian Gold Rush of the 1850, Geelong became an industrial centre becoming one of Australia's centre points wool mills, rope works, and paper mills. Vestiges of these bygone days still stand, with the National Wool Museum and the Old Geelong Gaol imperative visits for historians. By the 1960s population stood at 100,000, although gentrification of the suburbs means that the city is now experiencing record growth, economic development and investment. The results can be seen in the vibrant waterfront precinct, the Art Deco Eastern Beach and by the number of holiday makers increasing each year. Unsurprisingly, the great outdoors takes pride of place here. Water sports and beach combing are popular, but let's not forget that at just one hour from the You Yangs National Park and Serendip Sanctuary koala, kangaroo and other wildlife spotting is a must. This is wine country too, and the city's surrounding region is known for some of the loveliest tasting wines in Australia. If neither koalas not cabernet is your bag, then head for the city centre for plenty of shopping options.

### Day 15 - Day at sea

Days at sea are the perfect opportunity to relax, unwind and catch up with what you've been meaning to do. So whether that is going to the gym, visiting the spa, whale watching, catching up on your reading or simply topping up your tan, these blue sea days are the perfect balance to busy days spent exploring shore side.

### Day 16 - Eden

Known for the migrating whales that cruise through its waters between May and November, Eden sits in New South Wales' scenic Twofold Bay. While the whales are now protected and cherished here, the town was initially founded as a whaling centre and has many fascinating stories to tell. Namely, a unique symbiotic relationship with the killer whales. Rewarded with the tongues from freshly caught whales, the orcas would help to round up baleen whales in the bay, making it easy for humans to land them. This mutually beneficial exchange came to be known as The Law of the Tongue. Find out more about it, and the area's whaling past, at Eden Killer Whale Museum - where you can see the skeleton of the most famous orca accomplice, Old Tom. A yearly whale festival now celebrates the return of the magnificent whales to these waters. Head into Ben Boyd National Park for amazing bird watching, and to see the arches of soaring rock formations rising beside fire-red cliffs. View the glorious coastal scenery of frothing aqua-seas and rugged headlands, from the viewing deck on top of Boyd's Tower. Initially devised as a lighthouse, it would later be used as a lookout to spot whales breaching the bay's waters, and to see

The Small Cruise Ship Collection  
[www.small-cruise-ships.com](http://www.small-cruise-ships.com)

01432 507 280 (within UK)

[info@small-cruise-ships.com](mailto:info@small-cruise-ships.com) | [small-cruise-ships.com](http://small-cruise-ships.com)





## The Small Cruise Ship Collection

[www.small-cruise-ships.com](http://www.small-cruise-ships.com)

[small-cruise-ships.com](http://small-cruise-ships.com)

[info@small-cruise-ships.com](mailto:info@small-cruise-ships.com)

Old Tom splashing his tail to alert the whalers. Travel through more glorious scenery and tangled rainforest, to the verdant promontory of Green Cape Lighthouse. Jutting out into the South Pacific Ocean, the pearly-white lighthouse caps crumbling cliffs and offers sweeping views of the jagged cliffs and wave-thrashed rocks. The wrecks that lie offshore attest to the respect these sometimes-punishing waves demand.

### Day 17 - Sydney

With its glorious harbour, lavish golden beaches and iconic landmarks, Sydney is Australia's showpiece city. Creative and curious, discover the world-class cuisine, indigenous culture, and irresistible beach life that make Sydney one of the world's most dynamic, exciting destinations. Sydney's sparkling harbour is the heart of a richly cultural city. Overlooked by the metallic curves of the masterpiece of an Opera House, and that grand arched harbour bridge. Take it all in from the water, and admire the iconic landmarks, which are set before the city's gleaming skyline backdrop. If you're feeling adventurous, take the legendary climb up the smooth curve of the bridge - nicknamed the Coathanger - to soak in the shining city's spread from a unique perspective. Spread out to tan on one of the world's most famous stretches of sand - Bondi Beach. Restaurants and bars burble away in the background, while the sun beams down, and surfers curl and leap over pure rollers. Swim in spectacular salty ocean pools, or wander the beautiful Bondi to Coogee coastal walk for more of this sun-gorged stretch of prime coastline. Leaving the thrills of Australia's largest city behind is surprisingly simple - take to the skies to be flown above skyscrapers and rippling ribbons of waves, out to majestic

peaks, sheer cliffs and iconic rock formations - like the Three Sisters of the Blue Mountains. Or, drop in on wildlife sanctuaries caring for the country's animals - from hopping kangaroos to adorably cute, cuddly koalas.

### Day 18 - Post Cruise

\_ **\*\*Post Cruise Benefits\*\*** \_  
\_ **\*\*Airport transfers\*\*** \_  
\_ **\*\*International flights - Economy class\*\*** \_  
\_ **\*\*or Business Class upgrade\*\*** \_  
\_ **\*\*Private Executive Transfers\*\*** \_

Please note:

Itineraries are subject to change.

The Small Cruise Ship Collection

[www.small-cruise-ships.com](http://www.small-cruise-ships.com)

01432 507 280 (within UK)

[info@small-cruise-ships.com](mailto:info@small-cruise-ships.com) | [small-cruise-ships.com](http://small-cruise-ships.com)



## The Small Cruise Ship Collection

[www.small-cruise-ships.com](http://www.small-cruise-ships.com)

[small-cruise-ships.com](http://small-cruise-ships.com)

[info@small-cruise-ships.com](mailto:info@small-cruise-ships.com)

## YOUR SHIP: SILVER NOVA

**YOUR SHIP:** Silver Nova

**VESSEL TYPE:**

**LENGTH:**

**PASSENGER CAPACITY:**

**BUILT/REFURBISHED:**

Silver Nova is more than a new ship, it is a Nova way of luxury travel. This modern and beautiful vessel will debut in summer 2023, and is a home away from home for up to 728 guests. Silver Nova's innovative asymmetrical design introduces the world like never before, offering an immersive destination experience to our guests. With a gross tonnage of 54,700 tons she will offer a space-to-guest ratio of 75 GRT-per-passenger becoming one of the most spacious cruise ships ever built. What's more, Silver Nova will be one of the most environmentally friendly, and thanks to her groundbreaking technological solutions, she will propel the ship into a new era of sustainable cruising. It's the Nova way to travel. S.A.L.T. Chef's Table Prepare for an intimate and interactive dining experience like no other at the S.A.L.T. Chef's Table. Indulge in a choreographed menu of small plates highlighting regional flavours and star ingredients, all accompanied by unique wines and cocktails. Per guest reservation fee of U\$180 (incl. complimentary wine & cocktail pairing). Reservations will be taken exclusively on board Silver Nova. S.A.L.T. Kitchen Are you hungry for something new? Eat your way through the places on your cruise in the S.A.L.T. Kitchen. Enjoy destination-inspired

menus, including the Terrain menu, which offers recipes and flavours specific to the port visited, and the Voyage menu, which draws inspiration from the best flavours of the voyage. Pull up a chair and savour every taste of your cruise in a vibrant and welcoming atmosphere. S.A.L.T. Kitchen is the opportunity for all guests aboard Silver Nova to experience the very lifeblood of their destination. Atlantide Atlantide offers guests our quintessential dining experience. Combining contemporary elegance and hallmark Silversea service, this classic restaurant offers our signature fine dining. Atlantide is one of our best-loved eateries, and on Silver Nova we have given it an updated design. Large picture windows, sophisticated lighting design, plus a warm colour spectrum give Atlantide a blend of high-end and whispered luxury. The menu prides itself on superb ingredients and sublime flavour combinations, from caviar to lobster to gorgeous, melt in the mouth deserts. La Terrazza Our hallmark Italian restaurant is as varied as the food-loving country itself. La Terrazza aboard Silver Nova offers an unparalleled destination dining experience, from its expansive floor-to-ceiling windows to its large, outdoor terrace. Enjoy all the tastes of the different regions, including the best homemade pasta, fresh antipasto, bowls of steaming risotto, hearty ragu and delicious tiramisu. Be sure to try one of the bold wines from the cellar, to wash it all down. La Dame Indulge in new epitome of French fine dining aboard Silver Nova, where culinary heritage meets modern innovation. Immerse yourself in an exquisite gastronomic experience showcasing deep, balanced flavours, from curated tasting menus to a la carte selections paired with thoughtfully curated wine selection. Per guest reservation fee of

The Small Cruise Ship Collection  
[www.small-cruise-ships.com](http://www.small-cruise-ships.com)

01432 507 280 (within UK)

[info@small-cruise-ships.com](mailto:info@small-cruise-ships.com) | [small-cruise-ships.com](http://small-cruise-ships.com)





## The Small Cruise Ship Collection

[www.small-cruise-ships.com](http://www.small-cruise-ships.com)

[small-cruise-ships.com](http://small-cruise-ships.com)

[info@small-cruise-ships.com](mailto:info@small-cruise-ships.com)

US\$160 (incl. complimentary wine pairing). Kaiseki Experience the harmony of flavours and aesthetics with our enhanced Kaiseki dining experience. Delight in the fusion of Washoku's culinary heritage and health benefits, where each meticulously crafted dish is a work of art. Explore the depth and diversity of Japanese spirits with our exclusive selection of sake and Japanese whiskeys or savour a refreshing alternative from our delightful tea selection or cocktails. Per guest reservation fee of US\$80 (incl. complimentary sake, Japanese whiskeys or TWG tea and tea cocktails selection). Silver Note Where do you go if you want great food and a brilliant atmosphere in a relaxed and sophisticated setting? Silver Note of course! Harkening back to the old school days of dinner and dancing, this venue embodies a feeling of fun and sense of glamour that is unequalled in the industry. Jazz bands and soul singers play live as you sample delicate tapas style dishes with a gourmet twist. We guarantee a superlative night of entertainment in the gorgeously designed dinner venue. The Grill Silversea's much-loved casual dining restaurants serves a delectable range of burgers and salads by day, and turns into our famous Hot Rocks table BBQ concept by night. Found in our brand new eating venue The Marquee, The Grill is quite simply, the best place to eat between sea and sky. If you like flavoursome meals cooked to perfection, a casual laid back atmosphere and OMG views, then The Grill is the answer to your prayers. Spaccanapoli Nothing says Italy quite as well as a hot, fresh pizza. Spaccanapoli is a slice of Naples, where you'll taste deliciously thin, freshly made pizzas, topped with creamy mozzarella and minimalist toppings. The light and airy pizzeria forms part of our new al-fresco eatery The Marquee, and is the perfect choice for diners who want to be dazzled by our talented pizzaiolos spinning the dough in the open-air kitchen. Whether you want a light lunch or to share a slice with friends over an

aperitivo, it's always the right time for Spaccanapoli. The Pool Deck Enjoy a reimagined space where you can relax, refresh and rejuvenate on decks 10 and 11. Ample sunbeds for everyone, more space than ever before and the largest pool in the fleet - which offers exceptional 270° unhampered views - are just the beginning. The upper level sun deck is perfectly placed for those who want a quieter space to relax, and still enjoy those incredible, expansive views that are the hallmark of Silver Nova. But it is The Cliff Whirlpool, an infinity edge, glass fronted whirlpool, that really makes The Pool Deck something special. The Dusk Bar With an emphasis on the destination, panoramic views connects you with the world beyond on The Dusk Bar. This superb open-air sky bar provides plenty of space for guests to enjoy a pre or post dinner drink, while drinking in the jaw dropping 270-degree, panoramic views from the stern. The Dusk Bar's blessed combination of idyllic atmosphere and lovely drinks will guarantee to tick your boxes time after time. Whether you're enjoying a Spritz in South America, a cocktail in the Caribbean or a night cap in the Mediterranean, we think The Dusk Bar's unobstructed views give you a new perspective on sunsets at sea. The Marquee The expansive, attractive Marquee houses two of our greatest dining successes. Thanks to Silver Nova's groundbreaking asymmetrical design, we have been able to create an exciting new al fresco dining venue. The Marquee incorporates both The Grill and Spaccanapoli—two of Silversea's existing signature venues, which offer guests our trademark 'hot rocks' culinary concept as well as what are surely the best pizzas at sea. The Marquee will welcome guests in a relaxed atmosphere, serving casual fare by day and dinner under the stars by night. Arts Cafe The Arts Cafe offers a cultural setting for eating, drinking and socialising, as well as a chance to lose yourself while reading up on all your favourite artists and art.

The Small Cruise Ship Collection  
[www.small-cruise-ships.com](http://www.small-cruise-ships.com)

01432 507 280 (within UK)

[info@small-cruise-ships.com](mailto:info@small-cruise-ships.com) | [small-cruise-ships.com](http://small-cruise-ships.com)



## The Small Cruise Ship Collection

[www.small-cruise-ships.com](http://www.small-cruise-ships.com)

[small-cruise-ships.com](http://small-cruise-ships.com)

[info@small-cruise-ships.com](mailto:info@small-cruise-ships.com)

Enjoy healthy snacks and smoothies plus hot and cold drinks, juices, pastries and sandwiches in a light and airy space. Pop in for a late breakfast or afternoon snack, along with real Italian espresso plus a great range of tea. S.A.L.T. Bar Nothing says authentic experience better than Silver Nova's S.A.L.T. Bar. Get a taste for the authentic and settle down to enjoy locally-inspired cocktails and drinks. How can you go wrong with a Rum Punch in Barbados, a Pastis over ice in Marseille or a Pisco Sour in Lima? Nothing unites new faces and old friends in quite the same way. Be inspired to find your perfect locally-inspired beverage at the S.A.L.T. Bar and let in the colour and flavours of your journey rush in. S.A.L.T. Lab Welcome to the S.A.L.T. Lab, an interactive space where guests can deep-dive into local culinary heritage and techniques. Join our talented chefs and learn how your region's food is central to its culture. Engage in your destination through workshops, lectures and cooking demonstrations for an authentic souvenir not available in any shop. The S.A.L.T. Lab is not just about food and flavour; it is a unique place where holistic destination immersion gives an entirely new dimension to travelling. This is where the magic happens! The Shelter The Shelter is our newest pre and post dinner cocktail venue. Settle in amid an intimate and elegant setting, resplendent with sophisticated lighting, inviting sofas and stunning wraparound bar. Strategically located on deck three, the atmospheric hideaway opens onto the Atrium, creating an openness and connection to the other neighbouring venues. We promise you'll fall in love with one of the best bars on board while our talented team of mixologists mix and shake our range of signature and bespoke cocktails. With it is the perfect destination, warm smiles and legendary Silversea service, get set for unforgettable nights in The Shelter. Dolce Vita Our main bar has been newly reimagined for Silver Nova! Dolce

Vita has of course kept her legendary charm, inspired cocktails, stylish decor and comfortable seating, but a central bar now means the warm ambience is better than ever! Oozing Italian glamour, Dolce Vita is a relaxed, refined bar with a nightly piano player playing all your favourite tunes. Perfect for pre-dinner aperitivi, or even a post-dinner cocktail, Dolce Vita is truly the beating heart of social life on board. Panorama Lounge From early morning to late at night, the Panorama lounge offers everything you could wish for. A peaceful retreat that is the perfect place to break away to, a social place to meet and greet old friends, or an evening venue to partake in a cocktail as you sit back and watch the world go by. Sink into the plush seats and come evening, enjoy listening to the gentle sounds of a pianist, or the invigorating beats of our in-house DJ. Connoisseur's Corner Our smoking lounge aboard Silver Nova is our latest venue where cigar-lovers can buy and sample some of the world's finest Havanas, Cohibas, Partagas, Montecristos, Ramon Allones and Bolivars. Combining all the elements of cigar culture both indoors and on its stylish terrace, the Connoisseur's Corner is where aficionados can meet and mingle to share their iconic passion. Observation Lounge Set on the highest level at the very top of the ship, this is a quiet space for reading and reflection while being dazzled by the undulating seascapes that are constituent to life on board. Borrow a book from the in-house library, read the papers or just embrace the tranquillity of being at sea. The Venetian Lounge The grandeur and magic of music and theatre. The experience of being transported by performance. That satisfying feeling of seeing an evening show ... Welcome to Venetian Lounge, a place where the arts of theatre and music meet with full-scale productions and feature films. Paying tribute to a golden age of glamour, Venetian Lounge offers belle-epoque style cabaret seating, with

The Small Cruise Ship Collection  
[www.small-cruise-ships.com](http://www.small-cruise-ships.com)

01432 507 280 (within UK)

[info@small-cruise-ships.com](mailto:info@small-cruise-ships.com) | [small-cruise-ships.com](http://small-cruise-ships.com)



# The Small Cruise Ship Collection

[www.small-cruise-ships.com](http://www.small-cruise-ships.com)

[small-cruise-ships.com](http://small-cruise-ships.com)

[info@small-cruise-ships.com](mailto:info@small-cruise-ships.com)

intimate tables and chairs subtly placed between the rows of comfortable tiered banquettes. As the stage lights are dimmed, soak up the atmosphere, relax and enjoy a night of dazzling sights and sounds. Atrium Located on deck 4, the Atrium is the beating heart of Silver Nova. Inspired by Roman architecture, The Atrium magnificent windows floods our central meeting areas with abundant natural light. The area is home to both the Arts Cafe and The Shelter, as well as main service areas such as the Reception, Shore Concierge and Future Cruise Sales. The Atrium's enormous glass wall stretches over two decks, guaranteeing a deep connection with your destination whether at sea or docked in port. Boutique Exceptional shopping experiences do not end in the cosmopolitan cities we visit. Silversea's striking new shipboard boutiques, reimagined and redesigned are stunning modern design spaces befitting the finest creations from legendary designers. Carefully selected partners onboard Silversea's duty-free boutiques offers our guests a carefully curated selection of cutting edge fashions, jewellery, accessories, fine perfumes, cosmetics and Silversea Logo collection all at duty-free prices. Otium Spa Finding relaxation is one the of the principle aims of taking a cruise, so why not join us in the Otium Spa for guaranteed indulgence? Turn off your phone, slip on your robe and get ready for a bit of me time. Whether you need to unwind with a massage, perk up your skin with a facial or work up a sweat in sauna and steam room, Otium Spa offers the very latest in beauty therapy. Make every day a special occasion in Otium Spa. Casino Let the fun begin! Channel your inner James Bond and enjoy a flutter at a variety of table games including American Roulette, Blackjack and Poker as Silver Nova glides silently through the waves. An assortment of multi-game, multi-denominational reel and video slot machines are also available. Prepare yourself for a luxurious

and exhilarating experience with every turn of a card and spin of the wheel. Game on! Fitness Centre With state of the art Technogym® equipment, free weights and speciality classes, the Fitness Centre brings together elite design with programs that are specifically created for your body type and needs. With personal trainers available for individual sessions, training here is more a five-star experience for all levels of fitness and experience. And with the best view that you'll ever get whilst working out, there are definitely no



more excuses ...

The Small Cruise Ship Collection

[www.small-cruise-ships.com](http://www.small-cruise-ships.com)

01432 507 280 (within UK)

[info@small-cruise-ships.com](mailto:info@small-cruise-ships.com) | [small-cruise-ships.com](http://small-cruise-ships.com)

# The Small Cruise Ship Collection

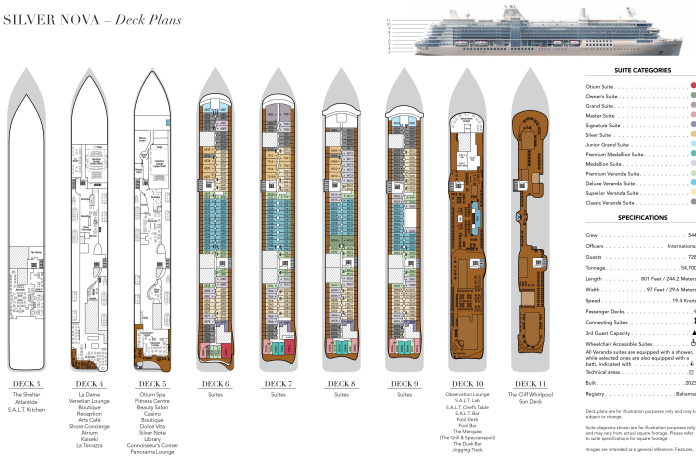
www.small-cruise-ships.com

small-cruise-ships.com

info@small-cruise-ships.com

## INSIDE YOUR SHIP

SILVER NOVA – Deck Plans



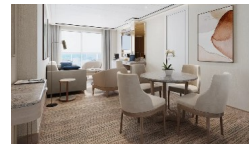
### Classic Veranda

### Deluxe Veranda



### Grand 1 Bedroom

### Junior Grand 1 Bedroom



### Junior Grand 2 Bedroom

### Master

### Medallion

### Otium

### Owner 1 Bedroom

### Owner 2 Bedroom

### Premium Medallion

### Premium Veranda

### Signature

### Silver





# The Small Cruise Ship Collection

[www.small-cruise-ships.com](http://www.small-cruise-ships.com)

[small-cruise-ships.com](http://small-cruise-ships.com)

[info@small-cruise-ships.com](mailto:info@small-cruise-ships.com)

## PRICING

09-Jan-2026 to 25-Jan-2026

Owner 2 Bedroom	£36775 GBP pp
Owner 1 Bedroom	£26065 GBP pp
Otium	£27745 GBP pp
Junior Grand 2 Bedroom	£24585 GBP pp
Grand 1 Bedroom	£20965 GBP pp
Master	£20655 GBP pp
Signature	£19739 GBP pp
Silver	£15405 GBP pp
Junior Grand 1 Bedroom	£14535 GBP pp
Premium Medallion	£13719 GBP pp
Medallion	£12345 GBP pp
Premium Veranda	£11885 GBP pp
Deluxe Veranda	£11679 GBP pp
Superior Veranda	£11529 GBP pp
Classic Veranda	£11169 GBP pp