

The Small Cruise Ship Collection

www.small-cruise-ships.com

small-cruise-ships.com

info@small-cruise-ships.com

ADVENTURE IN MADAGASCAR LUXURY CRUISE

PONANT invites you on an expedition cruise in the Indian Ocean to discover 'the island continent' of Madagascar. From the Seychelles to Mauritius, set off for 16 days aboard Le Jacques-Cartier, between beaches, dives, encounters with local populations and the discovery of endemic fauna and flora in rarely visited places of stunning natural beauty. From Victoria on the island of Mahe, you will first sail to La Digue, a veritable picture-postcard of the Seychelles: palm trees, granite rocks, white sand and crystal-clear waters. Your ship will then set sail for the northern tip of Madagascar. You will be dazzled by the beauty of the deserted beaches and preserved coral reefs of the idyllic islets in the Nosy Hara, Nosy Komba and Nosy Tanikely marine parks, renowned for their fabulous underwater life. In Majunga, you will explore Ankarafantsika National Park, home to numerous bird and lemur species. After exploring the picturesque and sumptuous city of Belo sur Mer, Le Jacques-Cartier will then sail towards the wild expanses of the UNESCO Biosphere Reserves in the south-west of Madagascar. Near the mouth of the Onilahu River, Toliara enjoys an exceptional flora that will delight botany lovers. Along the immense beaches edged with dunes in Sarodrano, you will experience an exceptional encounter with one of the planet's last 'sea nomad' people, the Vezo. You will discover their fishing villages and ancestral maritime know-how. Out at sea await turquoise waters, the magnificent coral reefs and the natural pools of Nosy Ve, an islet of white sand that shelters a large colony of red-tailed tropicbirds. After calling at Pointe des Galets on La Reunion island, Le Champlain will reach Port Louis in Mauritius, where this unforgettable cruise will draw to an end.

The encounters with the wildlife described above illustrate possible experiences only and cannot be



guaranteed.

ITINERARY

Day 1 VICTORIA, MAHÉ

Discover Mahe, the main island of the Seychelles and also the largest of the archipelago, home to the capital, Victoria. Mahe has almost 70 beaches of fine sand, framed by the emblematic granite rocks, and whose crystal clear waters are renowned for their rich underwater life. The island is also famous for its

The Small Cruise Ship Collection

www.small-cruise-ships.com

01432 507 280 (within UK)

info@small-cruise-ships.com | small-cruise-ships.com



The Small Cruise Ship Collection

www.small-cruise-ships.com

small-cruise-ships.com

info@small-cruise-ships.com

splendid mountain panoramas accessible on hikes, such as the Morne Seychellois, which is 905 metres high and overlooks the Indian Ocean. Mahe is also an island full of history where fine colonial properties rub shoulders with Creole houses - and don't forget the marvellous Botanical Gardens in Victoria.

Day 2 LA DIGUE ISLAND

La Digue Island is a veritable concentration of all the beauty of the Seychelles. Located 6 km south-east of Praslin, this small piece of land that looks like paradise is the third-largest island in the Seychelles, despite its modest size (5 km by 3 km)! Turquoise waters just asking you to swim in them, lush vegetation sheltering giant tortoises, beaches of fine sand fringed with coconut trees and surrounded with those emblematic large granite rocks with their pink highlights like at the famous Anse Source d'Argent: the perfect picture postcard... Authentic and preserved, the island follows a peaceful rhythm, with the only means of transport along its little roads being bikes or traditional oxcarts.

Days 3 - 4 AT SEA

During your day at sea, make the most of the many services and activities on board. Treat yourself to a moment of relaxation in the spa or stay in shape in the fitness centre. Depending on the season, let yourself be tempted by the swimming pool or a spot of sunbathing. This day without a port of call will also be an opportunity to enjoy the conferences or shows proposed on board, to do some shopping in the boutique or to meet the PONANT photographers in their dedicated space. As for lovers of

the open sea, they will be able to visit the ship's upper deck to admire the spectacle of the waves and perhaps be lucky enough to observe marine species. A truly enchanted interlude, combining comfort, rest and entertainment.

Day 5 NOSY HARA

Its limestone rock formations rising from the waters, or marine "tsingies" typical of Madagascar, make Nosy Hara both exceptional and immediately recognisable. Located to the north-west of Madagascar, the island is a protected area due to its incredible biodiversity. It is a veritable open-air aquarium inhabited by around 280 marine species. The rocky columns edged with gorgeous white-sand and pebble beaches fading into shades of deep blue make an idyllic place cut off from the world. Succumb to the charms of this untouched jewel that will welcome you into its stunning decor for a special experience. This is an ideal location for snorkelling.

Day 6 NOSY KOMBA & NOSY TANIKELY

During your cruise, your ship will stop in Nosy Komba, otherwise known as "lemur island". Not far from the Madagascar mainland, this volcanic island shaped like a gigantic turtle shell is covered in dense tropical rainforest. This vegetation is home to amusing black lemurs - furry orange-brown and black creatures that are surprisingly agile and call to each other from amongst the trees. The many small beaches and the emerald-coloured water make Nosy Komba a natural gem that only a select few visit. In the heart of the Nosy Be archipelago, discover Nosy Tanikely, nicknamed the "island of little earth." In

The Small Cruise Ship Collection
www.small-cruise-ships.com

01432 507 280 (within UK)

info@small-cruise-ships.com | small-cruise-ships.com



The Small Cruise Ship Collection

www.small-cruise-ships.com

small-cruise-ships.com

info@small-cruise-ships.com

In addition to a magnificent white sand beach bordering a lagoon of crystal-clear waters, the island, which is uninhabited, has exceptional marine and terrestrial biodiversity. Thanks to this, the area has been classified as a "marine and coastal protected area" since 2010. It is a perfect spot for swimming and snorkelling. Hiking fans won't be left out either: a stunning walk that climbs to the summit of the island will enable them to discover the old lighthouse built at the beginning of the 20th century and enjoy superb views over the ocean and surrounding islands.

Day 7 MAJUNGA

A lively and cosmopolitan town on the west coast of Madagascar, Majunga, also called Mahajanga, will be a port of call rich in discoveries. The former capital of the Sakalava kingdom, then a significant interchange due to its prime position between Africa and the Middle East, the city displays an interesting cultural patchwork. Also renowned for its outstanding natural sites, this port of call will provide you with the opportunity to discover Ankarafantsika National Park, home to many endemic animal and plant species, or the Cirque Rouge, immense red sandstone formations classified as national heritage.

Day 8 AT SEA

During your day at sea, make the most of the many services and activities on board. Treat yourself to a moment of relaxation in the spa or stay in shape in the fitness centre. Depending on the season, let yourself be tempted by the swimming pool or a spot

of sunbathing. This day without a port of call will also be an opportunity to enjoy the conferences or shows proposed on board, to do some shopping in the boutique or to meet the PONANT photographers in their dedicated space. As for lovers of the open sea, they will be able to visit the ship's upper deck to admire the spectacle of the waves and perhaps be lucky enough to observe marine species. A truly enchanted interlude, combining comfort, rest and entertainment.

Day 9 BELO SUR MER

In the south west of the Menabe Region, in the district of Morondava, you will marvel at the picturesque beauty of Belo sur Mer. This peninsula edged with mangroves alternates fine sandy beaches with rocks plunging into a sea whose shades fall between deep blue and crystal-clear green. This fishing village is renowned for its dhows, the traditional sailing boats of Madagascar, which are built in situ, in the local artisanal boatyard. The choreography of these vessels coming and going on the beach sets the pace of life in the village, bestowing it with a unique charm.

Days 10 - 11 TOLIARA & SARODRANO

Located to the south-west of the island of Madagascar, near the mouth of the River Onilahy, Toliara is a port town that opens onto the Mozambique Channel. Inhabited for several centuries, becoming prosperous during the colonial period in the 19th century, Toliara is a cheerful town with unspoilt nature and exceptional flora that will certainly appeal to fans of botany. The Antsokay Arboretum botanical garden with nearly 1,000

The Small Cruise Ship Collection
www.small-cruise-ships.com

01432 507 280 (within UK)

info@small-cruise-ships.com | small-cruise-ships.com



The Small Cruise Ship Collection

www.small-cruise-ships.com

small-cruise-ships.com

info@small-cruise-ships.com

Madagascar plant species, 90% of which are endemic, is worth a fragrant and charming detour. Cultural heritage will not be outdone, with the interesting museums of Mahafaly ethnology and the Museum of the Sea. Sarodrano is a small village in the south-west of Madagascar in the province of Atsimo-Andrefana, at the mouth of the Onilahy River. This village of Vezo fishermen possesses the authentic and unspoiled charm of remote places. You will be surprised by the dexterity with which these "nomads of the sea" steer their outrigger canoes to fish, or keep up their ancestral traditions like seaweed cultivation. If the tide allows it, you will also have the possibility of discovering the sacred cave of Sarodrano, a natural fresh water pool separated from the sea by just 10 metres (33 feet) of rocks.

Day 12 NOSY VE

Five kilometres out to sea from the Malagasy village of Anakao, Nosy Ve is an unspoilt paradise of exceptional wild beauty. Located on a two-kilometre (1.2 miles) long coral bank, this island is unique in that it is home to a colony of endemic birds commonly called red-tailed tropicbird. This nature reserve, a nesting site for rare birds, is unique because it is this species' only reproduction site. The duckboards installed on the island will enable you to observe the birds hidden from view under the forest of Madagascar jewel. This Eden dotted with natural pools is also a setting for coral, fish and sea turtles you can discover while snorkelling.

Days 13 - 14 AT SEA

During your day at sea, make the most of the many services and

activities on board. Treat yourself to a moment of relaxation in the spa or stay in shape in the fitness centre. Depending on the season, let yourself be tempted by the swimming pool or a spot of sunbathing. This day without a port of call will also be an opportunity to enjoy the conferences or shows proposed on board, to do some shopping in the boutique or to meet the PONANT photographers in their dedicated space. As for lovers of the open sea, they will be able to visit the ship's upper deck to admire the spectacle of the waves and perhaps be lucky enough to observe marine species. A truly enchanted interlude, combining comfort, rest and entertainment.

Day 15 POINTE DES GALETS

At the end of the 19th century, the construction of the port of Pointe des Galets lasted seven years, with the town called Le Port emerging in its wake. You'll also hear the name "Port-Reunion" used to designate the Pointe des Galets, which is the main port on the island of La Reunion. In fact, it is the only port in France that has five functions: naval base, passenger terminal, commercial port, fishing port and marina. The old town of the Port conjures up the area's rich history, which is connected to transport. Here you'll be able to discover the former house of the Reunion Railway and Port Company (1878), its marine cemetery and its teeming covered market.

Day 16 PORT LOUIS

On the north-west coast of Mauritius, discover Port Louis, the country's multicultural capital. Constantly in movement, the city, which was once a port of call on the route to India, is home to

The Small Cruise Ship Collection
www.small-cruise-ships.com

01432 507 280 (within UK)

info@small-cruise-ships.com | small-cruise-ships.com



The Small Cruise Ship Collection

www.small-cruise-ships.com

small-cruise-ships.com

info@small-cruise-ships.com

many cultural and historic treasures. In addition to the city's market where you will be able to discover all the local flavours and many handicrafts, make sure that you visit Fort Adelaide. Nestling on the heights of Port Louis, this citadel built in the 16th century, classified as a national heritage monument, offers sumptuous views over the surroundings. Not far from there, the Pamplemousse Botanical Garden will reveal to you its countless plant species, coming from all four corners of the world.

Please Note:

Itineraries are subject to change.



The Small Cruise Ship Collection

www.small-cruise-ships.com

01432 507 280 (within UK)

info@small-cruise-ships.com | small-cruise-ships.com



The Small Cruise Ship Collection

www.small-cruise-ships.com

small-cruise-ships.com

info@small-cruise-ships.com

YOUR SHIP: LE CHAMPLAIN

YOUR SHIP: Le Champlain

VESSEL TYPE:

LENGTH:

PASSENGER CAPACITY:

BUILT/REFURBISHED:

Featuring innovative and environmentally-friendly equipment, elegantly designed cabins, spacious suites with large windows, and lounge areas that open onto the outside, this new limited-capacity yacht boasting just 92 cabins and suites will offer you a truly unique cruising experience. As the first ship in a new series, Le Champlain will embody the unique atmosphere that is the cruise line's hallmark: a subtle blend of refinement, intimacy and comfort. Aboard this ship that flies the French flag, you will experience the incomparable pleasure of an intimate cruise, with the possibility of exploring an ever-increasing range of destinations in an ethnic-chic ambiance with luxury service. Experience a luxurious setting where the accent is on authenticity and passion for travel. RESTAURANTS As it is an essential part of French culture, gastronomy will naturally have pride of place aboard this new ship. Through its two restaurants, Le Champlain will invite you on a journey to elegance and epicureanism. In a relaxed atmosphere, a first dining area located on Deck 3 and able to seat 70 will serve grilled meats daily, along with a variety of salads and desserts. To the back of Deck 4, you will find a 260 m² panoramic restaurant which can accommodate all of our passengers in a single sitting. Designed

differently to that on our other ships, this dining area, which opens onto the outside, will have a buffet of salads, desserts and cheeses at your disposal. Our discreet and attentive crew will provide table service for hot meals. PUBLIC AREAS Like Le Boreal and its sisterships, Le Champlain has many common areas that are designed and equipped to meet all of your needs while preserving the intimacy of each passenger. A 140 m² reception area includes: A reception/concierge desk, An excursions desk, The ship's administrative services, The sales office, manned by our Guest Relations Officer, Our 50 m² boutique which sells clothing, jewellery, beauty products, postcards and various accessories, Toilets accessible to passengers with reduced mobility. A new hydraulic platform with adjustable height provides: Easier boarding than on any other cruise ship, Easier Zodiac embarkation and disembarkation for expeditions, Easier access to the sea for swimming and practising various water sports such as kayaking or paddle-boarding. A pool deck offering: A pool with a panoramic view, equipped with a counter-current swimming system, A pleasant solarium, An outdoor bar and lounge with armchairs and sofas. A 200 m² main lounge which can accommodate all of our passengers to share convivial moments and to host activities organised during the day or evening. Lastly, a theatre that seats 188, equipped with: The latest sound and lighting technology, A LED wall as the stage backdrop, for the projection of high-resolution images and videos. Please click the following links to read more about Ponant and the other Ponant

The Small Cruise Ship Collection
www.small-cruise-ships.com

01432 507 280 (within UK)

info@small-cruise-ships.com | small-cruise-ships.com



The Small Cruise Ship Collection

www.small-cruise-ships.com

small-cruise-ships.com

info@small-cruise-ships.com



cruise ships.

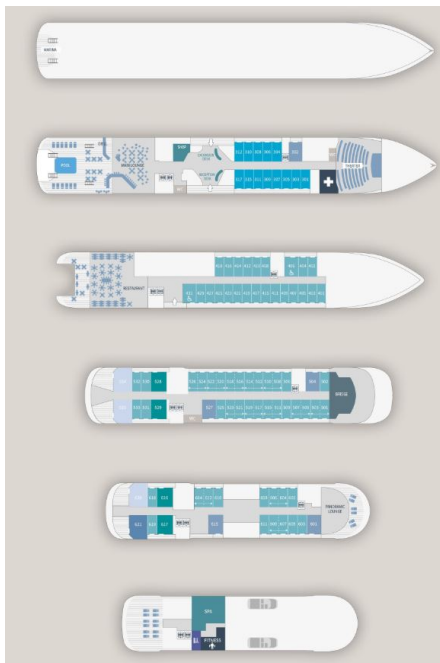
The Small Cruise Ship Collection

www.small-cruise-ships.com

small-cruise-ships.com

info@small-cruise-ships.com

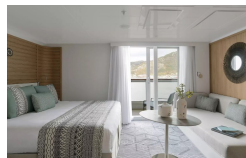
INSIDE YOUR SHIP



Deluxe Stateroom - Waitlist

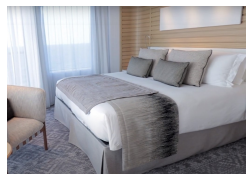


Deluxe Suite - waitlist



Grand Deluxe Suite - Waitlist

Owner's Suite



Prestige Stateroom Deck 4 - waitlist

Prestige Stateroom Deck 5

Prestige Stateroom Deck 6

Prestige Suite Deck 5 - waitlist

Prestige Suite Deck 6

Privilege Suite



The Small Cruise Ship Collection

www.small-cruise-ships.com

small-cruise-ships.com

info@small-cruise-ships.com

PRICING

04-Jan-2025 to 19-Jan-2025

Prestige Stateroom Deck 4 - waitlist	£8517 GBP pp
Deluxe Suite - waitlist	£12000 GBP pp
Prestige Stateroom Deck 5	£9570 GBP pp
Prestige Suite Deck 6	£20790 GBP pp
Deluxe Stateroom - Waitlist	£7456 GBP pp
Owner's Suite	£25330 GBP pp
Prestige Suite Deck 5 - waitlist	£20500 GBP pp
Grand Deluxe Suite - Waitlist	£25000 GBP pp
Privilege Suite	£21850 GBP pp
Prestige Stateroom Deck 6	£10150 GBP pp

ADDITIONAL CHARGES: Port Taxes & Fees 580 GBP pp