

The Small Cruise Ship Collection

www.small-cruise-ships.com

small-cruise-ships.com

info@small-cruise-ships.com

AFRICA TO AMERICA - ANTARCTIC EPIC EXPEDITION FROM CAPE TOWN TO USHUAIA

Starting in South Africa, this epic voyage across the southern Atlantic takes you to some of the world's most remote islands, including Tristan da Cunha and Gough Island. Sit back and relax before taking in the sights of Antarctica, as well as South Georgia, and visiting unforgettable beaches crammed with penguins. You'll get to explore amazing landscapes and encounter incredible wildlife along the way, on the ultimate Southern Atlantic trip.



ITINERARY

DAY 1 CAPE TOWN

Ending our epic transatlantic journey with one of the most spectacular city sceneries in Africa . Domiated by Table Mountain , Cape town is a cosmopolitan city with plenty of nearby splendid vineyards , wonderful harbour fronts and surprising restaurants where one can indulge on the delicious seafood

DAY 2-5 DAY AT SEA

Sea days are rarely dull. Take the time to sit back and let the world go by. The ship's observation decks provide stunning views of the passing ocean. A day at sea gives you the opportunity to mingle with other passengers and share your

The Small Cruise Ship Collection

www.small-cruise-ships.com

01432 507 280 (within UK)

info@small-cruise-ships.com | small-cruise-ships.com



The Small Cruise Ship Collection

www.small-cruise-ships.com

small-cruise-ships.com

info@small-cruise-ships.com

experiences of this incredible trip or head to our library which is stocked full of reference books. Get an expert's view in one of our on-board lectures or perhaps perfect your photography skills with invaluable advice from our onboard professional photographers.

DAY 6 TRISTAN DA CUNHA

Seabirds outnumber humans on this remote British outpost in the middle of the southern Atlantic. Millions of species like the rare yellow-nosed albatross, skuas, terns and petrels, including the endangered Tristan albatross, inhabit the bluffs. Northern rockhopper penguins breed on the beaches, while upwellings attract whales and dolphins. Fur seals also haul out on the island teeming with avian life.

DAY 7-10 DAY AT SEA

Days at sea are the perfect chance to relax, unwind and do whatever takes your fancy. So whether that is going to the gym, visiting the spa, trying to spot a whale from the deck, reading a chapter or two, or simply topping up your tan, these blue sea days are the perfect balance to the green days spent exploring on land.

DAY 11-12 SOUTH GEORGIA

Often called the 'Galapagos of the Poles,' South Georgia has a number of landing sites with half a million king penguins or three million breeding pairs of macaroni penguins, making up

the largest population in the world alongside harrumphing elephant seals. Among its remarkable sites is Grytviken, the historic whaling station where legendary British explorer Ernest Shackleton (1874-1922) rests in peace.

DAY 13-14 DAY AT SEA

Today as you sail, you'll bask in the endless comforts of your ship. From the deck, marvel at the dramatic sea views. Relax with a nurturing facial treatment or massage in the spa or delve into the ship's learning resources. Or, simply take refuge in your cabin and enjoy the opportunity to rest.

DAY 15-18 ANTARCTIC PENINSULA

Among captivating glaciers, majestic icebergs and snowy islands, the Antarctic Peninsula is where most visitors to the White Continent live their Antarctica dream. It's the most accessible part, with scientific bases and incredible scenery, like the photogenic Lemaire Channel. Shore excursions might include Petermann Island, where among Adelie penguins, blue-eyed shags and skuas, huge, lumbering elephant seals haul out.

DAY 19-20 DAY AT SEA

Spend your day at sea enjoying your boutique 5-star ship. Treat yourself to a spa day, attend an expert-led onboard lecture or enjoy the ocean views from the deck or the comfort of our Observation Lounge.

The Small Cruise Ship Collection

www.small-cruise-ships.com

01432 507 280 (within UK)

info@small-cruise-ships.com | small-cruise-ships.com



The Small Cruise
Ship Collection

www.small-cruise-ships.com

small-cruise-ships.com

info@small-cruise-ships.com

DAY 21 USHUAIA

Nestled in the foothills of the snow-capped Martial Range, Ushuaia's colourful streets and mismatched buildings cascade from the imposing mountains before coming to an abrupt halt at the shores of the Beagle Channel. As one of the world's southernmost cities, Ushuaia carries its 'end of the world' reputation well. The moody weather and dramatic surroundings certainly help. Board your boutique ship before departing for your journey through one of the most captivating wilderness regions of the world.

DAY 21 USHUAIA - BUENOS AIRES

Regional Flight from Ushuaia to Buenos Aires (EZE).

Please Note:

Itineraries are subject to change.

The Small Cruise
Ship Collection

www.small-cruise-ships.com

01432 507 280 (within UK)

info@small-cruise-ships.com | small-cruise-ships.com

The Small Cruise Ship Collection

www.small-cruise-ships.com

small-cruise-ships.com

info@small-cruise-ships.com

YOUR SHIP: DIANA

YOUR SHIP: Diana

VESSEL TYPE:

LENGTH:

PASSENGER CAPACITY:

BUILT/REFURBISHED:

Launched in 2023, SH Diana provides elegant and spacious 5-star accommodation for 192 guests in 96 spacious staterooms and suites, the vast majority with large balconies. Operated by an onboard team of 140 she provides a high level of personal service, exploring the Mediterranean and its famous sites of antiquity. Now sit back, relax and take a moment to get to know this amazing new ship, purpose-designed for our unique cultural expedition cruises. Named after the Ancient Roman goddess of light, the moon, hunting and the wilderness, SH Diana been specially designed for worldwide cruising to explore the most inspiring and inaccessible places on earth. Building on the outstanding amenities of her sister ships, she adds a dedicated Multifunctional Room next to the Observation Lounge, a Private Dining Room for special occasions, and two tenders which bring guests a comfortable alternative to Zodiacs for expedition landings. A Polar Class 6 ice-strengthened hull combines with extra-large stabilisers to make your journey as comfortable as possible. SH Diana has been designed for immersive experiences, with extensive outside deck areas, multiple observation points and bright, open and relaxing public spaces with unobstructed views. The pleasure and safety of our

guests is paramount at all times, cared for by our attentive crew and seasoned expedition leaders. Cutting edge hygiene technology protects the health of all on board to the highest standards and includes air conditioning with UV sanitisation systems. SH Diana's 96 staterooms, including 11 suites, are each a superbly comfortable home from home and all feature panoramic sea views, a flame-effect fireplace, original works of art, plush couches, premium pocket sprung mattresses, en-suite bathrooms with glass-enclosed rain showers, and Egyptian cotton towels, bathrobes and sheets. A pillow menu offers customised head and neck comfort during rest, while a large flat screen TV, espresso machine with Illy premium coffee, tea making facilities with the finest Kusmi teas, and a minibar with refreshments enhance relaxation at any time. In-room dining is of course available at



all hours.

The Small Cruise Ship Collection
www.small-cruise-ships.com

01432 507 280 (within UK)

info@small-cruise-ships.com | small-cruise-ships.com

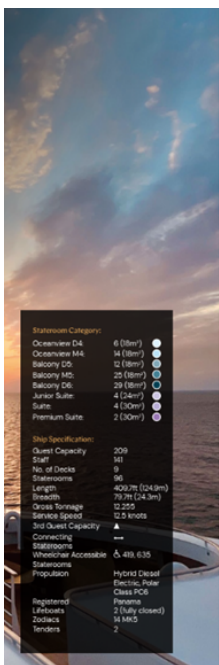
The Small Cruise Ship Collection

www.small-cruise-ships.com

small-cruise-ships.com

info@small-cruise-ships.com

INSIDE YOUR SHIP

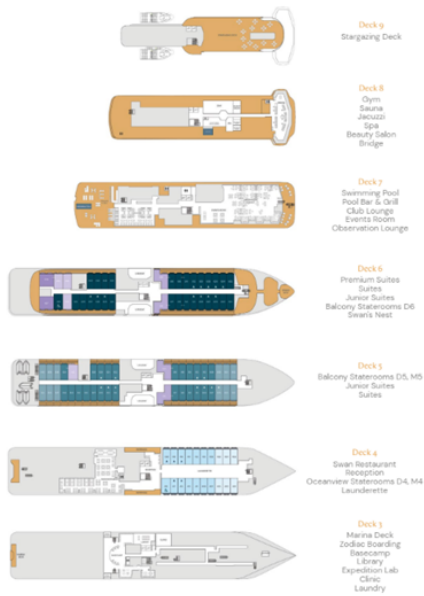


Stateroom Category:

- Oceanview D4 6 (80m²) ●
- Oceanview M4 14 (80m²) ●
- Balcony D5 12 (80m²) ●
- Balcony M5 25 (80m²) ●
- Balcony D6 29 (80m²) ●
- Junior Suite 4 (120m²) ●
- Suite 4 (120m²) ●
- Premium Suite 2 (120m²) ●

Ship Specification:

- Guest Capacity 209
- Crew 101
- No. of Decks 9
- Staterooms 98
- Length 402.7m (1243ft)
- Breadth 79.9m (243ft)
- Gross Tonnage 12,205
- Service Speed 12.5 knots
- 1st Guest Capacity 11
- Connecting 1
- Staterooms 98
- Wheelchair Accessible 5, 491, 635
- Staterooms 98
- Propulsion Hybrid Diesel
- Class P16
- Parents 2 (fully closed)
- 14 MISC
- 2



Balcony D5



Balcony D6



Balcony M5



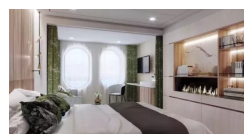
Junior Suite



Oceanview D4



Oceanview M4



Premium Suite

Suite



The Small Cruise Ship Collection

www.small-cruise-ships.com

small-cruise-ships.com

info@small-cruise-ships.com

PRICING

14-Nov-2025 to 05-Dec-2025

Balcony D6	£10801 GBP pp
Suite	£14371 GBP pp
Premium Suite	£15850 GBP pp
Junior Suite	£13709 GBP pp
Balcony M5	£10292 GBP pp
Balcony D5	£9781 GBP pp
Oceanview M4	£7894 GBP pp
Oceanview D4	£7537 GBP pp