

The Small Cruise Ship Collection

www.small-cruise-ships.com

small-cruise-ships.com

info@small-cruise-ships.com

ALASKA AND BRITISH COLUMBIA - WILDERNESS, GLACIERS AND CULTURE

Sailing past the islands and fjords of the Johnston Strait north of Vancouver Island, we'll emerge into open sea, continuing up into the Hecate Strait. As your introduction to Alaska, it doesn't get much better than the magnificent Misty Fjords wilderness. Next stop is the historic town of Wrangell where you can look for petroglyphs strewn along the beach. Get your first glimpse of glaciers in either the Tracy or Endicott fjords, discover a 'Little Norway' in Petersburg, and admire art at the many galleries in Haines. William Henry Bay is the site of old-growth forest – and possibly gold to be found – while Point Adolphus is known for superb whale watching. You'll also visit Sitka, the former capital of Alaska when it belonged to Russia.



ITINERARY

DAY 1 Overnight in Vancouver

Enjoy British Columbia's largest city Your adventure begins in the beautiful city of Vancouver at the foot of the Rockies, where you'll spend the night before your expedition cruise. Vancouver has a flavour all its own – and so does its global cuisine. Chinatown, Punjabi Market and Little Italy are all waiting to tempt your tastebuds. Visit Gastown, the city's oldest neighbourhood, and climb Vancouver Lookout for a citywide panorama overlooking neon-lit Granville Street, West End beaches and the towering cedars of Stanley Park. Why not come early and join our optional Pre-Programme taking you on a

The Small Cruise Ship Collection

www.small-cruise-ships.com

01432 507 280 (within UK)

info@small-cruise-ships.com | small-cruise-ships.com



The Small Cruise Ship Collection

www.small-cruise-ships.com

small-cruise-ships.com

info@small-cruise-ships.com

luxury train trip through the Canadian Rockies. What better way to begin your adventure.

DAY 2 Vancouver city sights

Enjoy the incredible highlights of this fantastic city After a delicious breakfast at your hotel, you'll get your adventure under way with a fun tour taking in the highlights of this fantastic and vibrant city. Even if you've seen some already, they're always worth seeing again. We'll give you a taste of the sights and sounds that make Vancouver so unique and who knows? We may even inspire your next adventure. Our first excursion ends at the pier where we meet your beautiful hybrid-powered home for the next 12 days, MS Roald Amundsen. It's time to begin your unforgettable expedition cruise.

DAY 3 Cruising through British Columbia

Up close to nature as we explore islands and channels On our smaller expedition ships, you'll get an unrivalled intimate experience of the protected North American Pacific Fjordland. As we navigate the lesser-travelled channels, you'll get close to the beautiful and fascinating scenery. Keep your binoculars close at hand. As always, there's plenty to see and learn in the Science Center, with insightful lectures from your Expedition Team, and opportunities to swap memories of your adventures. This is also a great time to wind down, with a little pampering in the spa or sitting up on deck with your fellow explorers as the stunning scenery slips by.

DAY 4 Beautiful Misty Fjords

Alaskan wilderness where wildlife thrives all around Part of the Tongass National Forest, Misty Fjords is a pristine wilderness of evergreens, waterfalls and snow-capped peaks. Influential mountaineer John Muir described it as one of the most beautiful

places he'd ever seen. Weather permitting, you'll join the Expedition Team to tour Misty Fjords on small expedition boats or take kayaks out for an optional excursion. Look out for mountain goats, bears and moose. In the water, you'll find Pacific salmon, along with otters, sea lions, harbour seals, orcas and Dall porpoises. And look skywards for hummingbirds, herons and Bald Eagles.

DAY 5 Wrangell's petroglyphs

Visit one of Alaska's oldest harbour towns Our cruise of the Alaskan islands takes us to Wrangell. A mile out of town you'll find the ancient rock carvings of Petroglyph Beach. Bring paper and take some stone rubbings as a unique souvenir. Learn more about Wrangell's fascinating past in the local museum. Now part of the US, it's been governed by Britain, Russia and the Tlingit people. On Shakes Island, the Chief Shakes Tribal House and totem poles tell the Tlingit story. Your visit includes a trip on the waters in our small expedition boats. On land, hikers will enjoy the nature trails from Stikine River and Mount Dewey to the rainforest.

DAY 6 Holkham Bay fjords

Icebergs and wildlife in idyllic twin fjords Holkham Bay has two arms – Tracy and Endicott – beautiful fjords that are out of reach for larger cruise ships. Your captain will decide which offers better exploration options on the day, but don't worry, both are equally special. At the end of each fjord, fresh icebergs calve from the glaciers against a stunning backdrop of forested cliffs. Endicott Arm is a breeding ground for harbour seals, often seen on the floating ice. You might also see whales, bears, mountain goats and moose. Get wildlife tips from our onboard photographer before we head out on expedition boats to get closer to these unique sights.

The Small Cruise Ship Collection
www.small-cruise-ships.com

01432 507 280 (within UK)

info@small-cruise-ships.com | small-cruise-ships.com



The Small Cruise Ship Collection

www.small-cruise-ships.com

small-cruise-ships.com

info@small-cruise-ships.com

DAY 7 Alaska's Little Norway

Humpback whales and the Devil's Thumb We continue to cruise north to Petersburg, perched at the edge of stunning Frederick Sound. Settled by a Norwegian in the 1800s – and fondly known as 'Little Norway' – its shallow, bustling harbour houses Alaska's largest home-based halibut fishing fleet. Our ships are small enough to enter, and our shared Norwegian heritage makes for a great talking point with the local community as we explore this charming town. Don't miss the views from the waterfront. You can watch icebergs float down the sound, look across to North America's biggest rockface, the Devil's Thumb, and in summer, the waters attract feeding humpback whales.

DAY 8 Native art in Haines

Artist community in the 'Valley of the Eagles' The frontier town of Haines was originally home to the Chilkat Tlingit people, renowned for their weaving skills. You'll see amazing examples of their work, with mountain goat fur and cedar bark woven into intricate designs, at the Haines Sheldon Museum. Haines has a flourishing art scene, with galleries and workshops filled with Totem carvings, silverwork and sculptures. Investing in Alaskan art is a great way to support local artists. You can practice your photography skills on the incredible landscapes and wildlife. Known as 'Valley of the Eagles', Haines has a thriving Bald Eagle population. The valley ecosystem supports bears and moose too.

DAY 9 William Henry Bay

Ancient forests, wildlife and whales At William Henry Bay on the edge of the Chilkat mountain range local guides will lead you through the old-growth forest. They'll keep you safe as you watch for brown and black bears, black-tailed deer and moose. You'll see evidence of copper and gold mines here, although the

US government's mid-20th century rush for uranium proved unsuccessful. Recent surveys suggest there might still be gold to find, so keep those eyes open. In the evening, we pass Point Adolphus on Chichagof Island. Overlooking Glacier Bay National Park, it's considered one of the best whale watching spots in North America.

DAY 10 Sitka's blended cultures

Stunning scenery and a unique mix of cultures Surrounded by Tongass National Forest, Sitka is only accessible by sea and air. Get out on deck for stunning views of the Sisters Mountains and Mount Edgecumbe Volcano. Discover Sitka's fascinating history with our Expedition Team. Inhabited by the Tlingit for 10,000 years, it was occupied by Russia in 1804, before being sold to America after the Crimean War. Today, Sitka blends all three cultures. Visit the Russian Orthodox cathedral and Russian Bishop's House. Sitka National Historic Park is a real highlight, where you'll see ornate Haida and Tlingit totem poles. Or enjoy a walking trail through the forest to the ocean.

DAY 11 The glaciers of Icy Bay

Wildlife watching in glacier-fed waters You'll experience an amazing expedition day in Icy Bay today. Three glaciers – Guyot, Yahtse and Tyndall – regularly calf into the bay. If conditions allow, the Expedition Team will take you ashore on the 34-mile-long, 8-mile-wide Guyot Glacier or you can explore in kayaks on an optional excursion. Wildlife abounds in the Gulf of Alaska, offering unrivalled photography opportunities. Humpback whales, orcas, Stellar sea lions, sea otters and harbour seals lazing on floating chunks of ice, can be seen in these waters. Our onboard photographer is ready with expert tips on how to get the best from your camera.

The Small Cruise Ship Collection
www.small-cruise-ships.com

01432 507 280 (within UK)

info@small-cruise-ships.com | small-cruise-ships.com



The Small Cruise Ship Collection

www.small-cruise-ships.com

small-cruise-ships.com

info@small-cruise-ships.com

DAY 12 Edge of the Copper River

Cordova's successful environmental recovery. Sitting in the Chugach National Forest and only accessible by boat or plane, remote Cordova has retained its tradition, small-town authenticity, and its friendly residents will welcome you as you explore the salmon fishing town. You'll be in awe of its spectacular setting between Orca Inlet, Hawkins Island, Mount Eccles, Eyak Lake and the Copper River Delta. In 1989, Cordova was probably best known for the Exxon Valdez oil spill. Today, after major clean up efforts, its coastline has mostly recovered, and you'll be able to see wildlife like sea otters, eagles, tundra swans, beavers, moose and bears.

DAY 13 Ivy League glaciers

Elemental nature and whimsical names. Your lecture today may well be related to glaciology. We visit College Fjord, which holds five tidewater glaciers, five valley glaciers and a dozen others. The 1899 Harriman Expedition team, which charted the fjord, named the glaciers after their alma maters, which include Vassar, Harvard and Yale. Princeton is missing, apparently a deliberate snub. We'll get as close to the glaciers as we can, taking our small expedition boats on the fjord if possible, or in kayaks as an optional excursion. From the water, you might glimpse humpback whales, Bald Eagles, otters and sea lions who inhabit this icy wilderness.

DAY 14 Scenic drive from Seward

Travelling inland through spectacular landscapes. Your cruise ends in Seward, the only deepwater, ice-free port with road, rail and air connections to Alaska's interior. And while this is where you leave the seas, there's still plenty more to experience. Seward is surrounded by vast mountains, magnificent glaciers and incredible wildlife. You'll enjoy a scenic drive across the

spectacular backcountry of the Kenai Fjords National Park. Look out for impressive Dall sheep often seen along the route. You'll stop at the Alaska Wildlife Conservation Center and learn about their work with orphaned or injured animals, from eagles and owls to bison, bears and musk oxen. In Anchorage, you'll check into your hotel and have the evening free to explore.

DAY 15 Adventures in Anchorage

Discover Alaska's capital, or see wildlife in Denali. Your Alaska expedition cruise ends in Anchorage, a city packed with places to explore and enjoy, from restaurants and galleries to sports venues and shops. If you can, it's worth extending your time here. Anchorage Museum and the Native Heritage Center give you a taste of local culture. If you prefer the open air, why not visit the flowering Town Square Park, or go salmon fishing in Ship Creek. The incredible Denali National Park is home to North America's highest peak, and a high density of Alaskan wildlife. If you have time, it's well worth joining our Post-Program to tour Denali National Park for a perfect expedition finale.

Please Note:

Itineraries are subject to change.

The Small Cruise Ship Collection

www.small-cruise-ships.com

01432 507 280 (within UK)

info@small-cruise-ships.com | small-cruise-ships.com

The Small Cruise Ship Collection

www.small-cruise-ships.com

small-cruise-ships.com

info@small-cruise-ships.com

YOUR SHIP: ROALD AMUNDSEN

YOUR SHIP: **Roald Amundsen**

VESSEL TYPE:

LENGTH:

PASSENGER CAPACITY:

BUILT/REFURBISHED:

Launched in 2019, The state of the art vessel features new and environmentally sustainable hybrid technology that will reduce fuel consumption and show the world that hybrid propulsion on large ships is possible. MS Roald Amundsen is the first of two hybrid ships to be launched cutting emissions by sailing with electrical propulsion. Hybrid technology, combined with the advanced construction of the hull and effective use of electricity on board will reduce fuel consumption and CO2-emissions on the ships by 20 percent. The future of shipping will be silent and emission free. MS Roald Amundsen will lead the way towards an even more sustainable way of traveling. Sailing on electrical power is not only a great benefit for the environment, but it will also enhance the impact of experiencing nature for the guests. The ship will be specially constructed for voyages in polar waters and serve as a comfortable basecamp at sea - bringing adventurers from all over the world to the most spectacular destinations in the most sustainable way. These ships combine state-of-the-art technology together with a premium onboard experience. All cabins are outside, half have private balconies, and aft suites even boast private outdoor Jacuzzis, to soak up the stunning scenery in style. Facilities on board One of the

most eye-catching exterior design features of the ships will be the two-level indoor/outdoor Observation Deck wrapped around the top of the ships' raked bow. In a vast area behind it, you'll find the core of the onboard experience: Amundsen Science Center. Packed with state of the art technology and high tech gadgets such as touch screens and science equipment, the immersive edutainment area will be the place guests and staff/crew meet, mingle and create a deeper understanding for the areas they explore. The flexible venue will feature lecture spaces, a small library, and speciality areas for workshops in photography, biology, and more. The stunning scenery will be reflected in a rich and comfortable interior design. Scandinavian materials from nature, such as granite, oak, birch and wool will be used to create relaxed and stylish cabins and public areas. All cabins are outside, 50 % will have private balconies, aft suites will feature private outdoor Jacuzzis with



spectacular views.

The Small Cruise Ship Collection
www.small-cruise-ships.com

01432 507 280 (within UK)

info@small-cruise-ships.com | small-cruise-ships.com



The Small Cruise Ship Collection

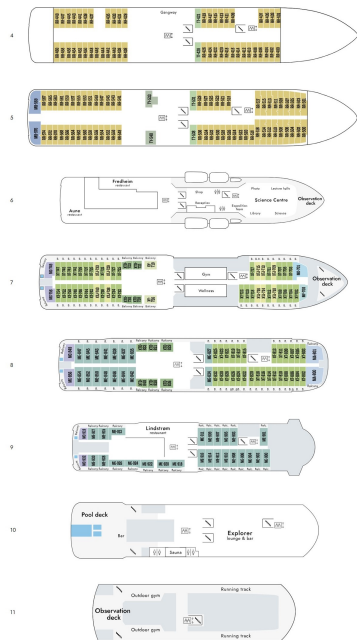
www.small-cruise-ships.com



small-cruise-ships.com

info@small-cruise-ships.com

INSIDE YOUR SHIP



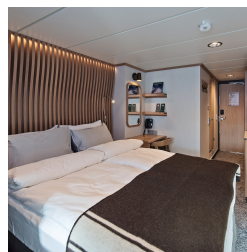
Arctic Superior. From



Expedition Suite. From



Polar Outside. From





The Small Cruise Ship Collection

www.small-cruise-ships.com



small-cruise-ships.com

info@small-cruise-ships.com

PRICING

16-May-2025 to 29-May-2025

Arctic Superior. From £5782 GBP pp

Polar Outside. From £5252 GBP pp

Expedition Suite. From £8528 GBP pp

09-Jun-2025 to 22-Jun-2025

Polar Outside. From £5687 GBP pp

Expedition Suite. From £8838 GBP pp

Arctic Superior. From £6264 GBP pp



The Small Cruise Ship Collection

www.small-cruise-ships.com

01432 507 280 (within UK)

info@small-cruise-ships.com | small-cruise-ships.com