

The Small Cruise Ship Collection

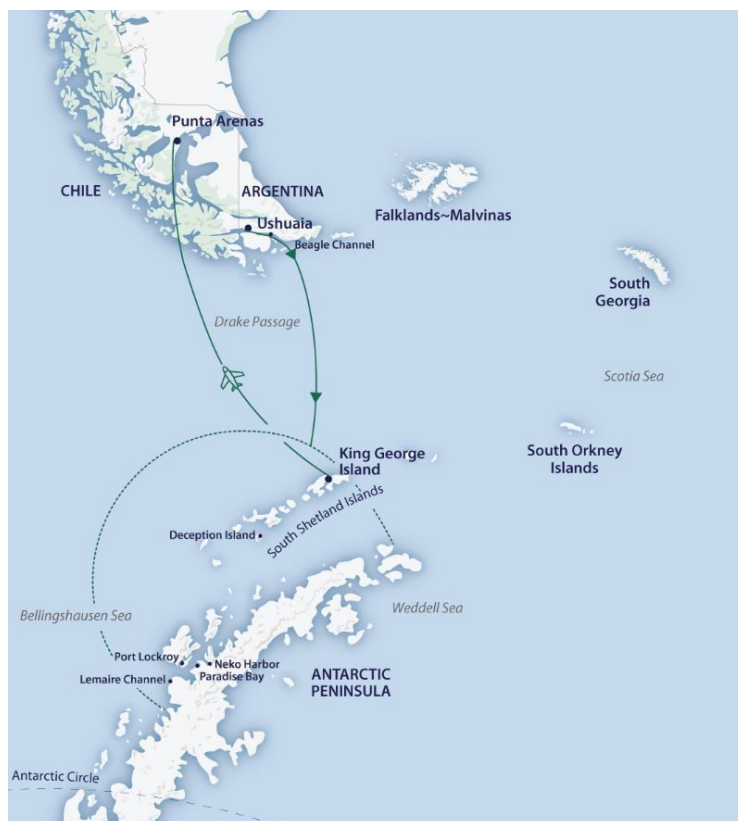
www.small-cruise-ships.com

small-cruise-ships.com

info@small-cruise-ships.com

ANTARCTIC EXPLORER ABOARD GREG MORTIMER

Early Antarctic explorers returned from their voyages to the deep south with tales of a magnificent, ice-covered land teeming with life. Experience the awe-inspiring immensity of Antarctica and immerse yourself in the unimaginable beauty of the Antarctic Peninsula, where vast glaciers tumble into the sea, penguins are dwarfed by soaring peaks, and humpback and minke whales feast on abundant krill. Reduce your time on the high seas by flying at least one way across the Drake Passage.



ITINERARY

Day 1 Arrival airport transfer and overnight in Ushuaia

Arrive in Ushuaia, where you will be met by a representative of Aurora Expeditions and transferred to your group hotel (preferred flights only). Upon arrival at your included hotel, kindly remind hotel check-in staff to provide you with Aurora Expeditions cabin

The Small Cruise Ship Collection
www.small-cruise-ships.com

01432 507 280 (within UK)

info@small-cruise-ships.com | small-cruise-ships.com



The Small Cruise Ship Collection

www.small-cruise-ships.com

small-cruise-ships.com

info@small-cruise-ships.com

tags. Please clearly label the tags with your name and ship cabin number.

Day 2 Embarkation Day

This morning, please ensure your cabin luggage is fitted with cabin tags clearly labelled with your name and cabin number. Please take your cabin luggage down to hotel reception by 8.00 AM. Please be advised that this voyage includes a chartered flight at the end of the voyage from Antarctica to Punta Arenas. The permitted luggage allowance is 20 kilograms of check-in luggage plus one piece of carry-on luggage weighing no more than seven kilos. Your luggage will be collected from your hotel and transferred directly to port for clearance and delivered to your cabin ahead of your arrival on board. Keep any valuables or personal items with you throughout the day. Once you have checked out of your hotel by 11.00 AM, you have free time before meeting back in the hotel lobby at 2.00 PM to commence a tour of Ushuaia. Alternatively, enjoy time at leisure and make your own way to Prison Museum carpark by 3.45 pm to rejoin the group and transfer to the pier for embarkation. Ushuaia, capital of Tierra del Fuego is located at the shores of the Beagle Channel and surrounded by the Martial Mountains giving you a unique landscape in Argentina, which is the combination of mountains, sea, glaciers and forests. On this introductory tour, you will visit "La Mision" neighbourhood, the old Government House, and the upper area of the city, which offers beautiful panoramic views of Ushuaia and the Beagle Channel. During the excursion you will see the antique houses that belonged to the first families settled in Ushuaia. The excursion ends with a visit to the Old Prison Museum before

transferring to the pier for embarkation at approximately 4.00 PM. After embarkation, you'll have time to settle into your cabin before our important mandatory briefings. As the ship pulls away from port, we'll gather on the deck to commence our adventure with spectacular views over Ushuaia and Tierra del Fuego. This evening, get to know your fellow expeditioners and friendly expedition team and crew at a welcome dinner. (Breakfast and dinner included. Lunch is at own expense)

Day 3 Drake Passage Crossing

As we commence the Drake Passage crossing, we make the most of our time getting comfortable with the motions of the sea. Our expedition team prepare you for our first landing with important wildlife guidelines and biosecurity procedures, and start our lecture program to help you learn more about Antarctica's history, wildlife and environment. Our wildlife experiences begin as we enjoy watching and photographing the many seabirds, including majestic albatrosses and giant petrels following in our wake. They rise and fall skilfully, using air currents created by the ship to gain momentum.

Day 4 Drake Passage & South Shetland Islands

Nearing the South Shetland Islands and the tip of the Antarctic Peninsula on day four, the excitement is palpable with everyone converging on one of the observation decks, watching for our first iceberg. The ocean takes on a whole new perspective once we are below the Antarctic Convergence and are surrounded by the surreal presence of floating ice sculptures. The memory of your first big iceberg sighting is likely to remain with you for a

The Small Cruise Ship Collection
www.small-cruise-ships.com

01432 507 280 (within UK)

info@small-cruise-ships.com | small-cruise-ships.com



The Small Cruise Ship Collection

www.small-cruise-ships.com

small-cruise-ships.com

info@small-cruise-ships.com

lifetime. Weather permitting, we may attempt our first landing in Antarctica by late afternoon.

Day 5-9 Antarctic Peninsula

It's almost impossible to describe the feeling of arriving in Antarctica. Spotting your first iceberg and taking a deep breath of some of the most fresh, crisp air on earth is an experience that will stay with you forever. Once we arrive, the western side of the Antarctic Peninsula and the South Shetland Islands are ours to explore, and we have a host of choices available to us. Because we are so far south, we will experience approximately 18-24 hours of daylight and the days can be as busy as you wish. Your experienced expedition team, who have made countless journeys to this area, will use their expertise to design your voyage from day to day, choosing the best options based on the prevailing weather, ice conditions and wildlife opportunities. We generally make landings or Zodiac excursions twice a day. You'll want to rug up before joining Zodiac cruises along spectacular ice cliffs or among grounded icebergs, keeping watch for whales, seals and porpoising penguins. Zodiacs will also transport you from the ship to land, where you can visit penguin rookeries, discover historic huts and explore some of our favourite spots along the peninsula. While ashore we aim to stretch our legs, wandering along pebbly beaches or perhaps up snow-covered ridgelines to vantage points with mountains towering overhead and ice-speckled oceans below. If you have chosen an optional activity, you'll have the option to do that whenever conditions allow, and of course keen polar plungers will have the chance to fully immerse themselves in polar waters - conditions permitting! In addition to Zodiac

cruises and shore excursions, we may ship cruise some of the narrow, dramatic straits separating offshore islands from the mainland, or linger in scenic bays to watch whales travelling or feeding. This is a great time to enjoy the observation lounge or make your way to the bridge for uninterrupted views of Antarctica in all its splendour. Keep an ear out for the creak and deep rumble of glaciers as they carve their way from summit to sea, and take a quiet moment to experience the wonder of this incredible white continent.

Day 10 Fly King George Island to Punta Arenas

As we approach Frei Base on King George Island, it is time to farewell Antarctica and our amazing adventure before boarding our flight (approximately one-and-a-half-hours) to Punta Arenas, Chile. On arrival at the Punta Arenas airport, you will be transferred to our group hotel. NOTE: King George Island is located at the northern tip of the Antarctic Peninsula in the South Shetland Islands and is one of the most remote place on Earth. A clear sky with perfect visibility is required in order to take off and land safely. We apologise in advance if you experience any delays.

Day 11 Punta Arenas

After breakfast, bid a fond farewell to your fellow travellers as we all continue our onward journeys, hopefully with a newfound sense of the immense power of nature (breakfast included). NOTE: Please advise your Reservations Consultant or travel agent if you require an airport transfer, so it can be booked in advance. The departure airport transfer is not included in your



The Small Cruise
Ship Collection

www.small-cruise-ships.com

small-cruise-ships.com

info@small-cruise-ships.com

voyage cost and will be at an additional charge.

Please Note:

In true expedition style we encourage exploration and adventure, offering flexibility in challenging environments in a way that puts you among the action to see and do as much as possible. This itinerary is only a guide and subject to change due to ice and weather conditions.



01432 507 280 (within UK)

info@small-cruise-ships.com | small-cruise-ships.com



The Small Cruise Ship Collection

www.small-cruise-ships.com

small-cruise-ships.com

info@small-cruise-ships.com

YOUR SHIP: GREG MORTIMER

YOUR SHIP:

Greg Mortimer

VESSEL TYPE:

LENGTH:

PASSENGER CAPACITY:

BUILT/REFURBISHED:

Capable of negotiating the strongest winds and waves, the Greg Mortimer is built to world-class polar standards - designed in close consultation with our expedition specialists, taking advantage of our more than 25 years of experience. The Greg Mortimer redefines expedition cruising for the future, with just 132 passengers on board in the polar regions. Not only is the ship bigger to contend with adverse weather conditions, its added creature comforts make for a more enjoyable journey out on the open ocean. The Greg Mortimer remains true to our ethos and focus on multiple landings, flexible itineraries and family atmosphere - just with an improved home base! As a modern and custom-designed ship, the Greg Mortimer is at the cutting edge of nautical technology. Robust, powerful and built with our guests in mind, this ship marks a significant investment in our fleet's capabilities. From the European Arctic to the depths of Antarctica, and other far-flung destinations in-between, the Greg Mortimer will make your journey a breeze! Greg Mortimer X-BOWX-BOW™ Our expeditions face some of the worst Mother Nature can throw at us. However, this won't be problem on the Greg Mortimer with the introduction of the patented X-BOW™, created by Norwegian ship designer ULSTEIN. As one of the

leaders in marine engineering, ULSTEIN's X-BOW™ is an inverted bow concept that's been built on over 100 vessels in the shipping industry. Excitingly, we are the first expedition cruise operator to utilise this technology for the challenging open ocean waves! Hydraulic viewing platforms Although there is no doubt that you'll love the aesthetics of the Greg Mortimer, we are all here to admire the spectacular landscape and spot the elusive wildlife in their natural habitat. To ensure you get the best views possible, the new ship features unique viewing platforms, custom-built for the Greg Mortimer. Accessed from Deck 5, the two platforms fold out hydraulically for unobstructed views of passing marine life and seabirds - make sure your camera is locked and loaded! Zodiac launching platform Zodiacs are a vital part of getting up close and personal on your adventure - sneaking into areas that the Greg Mortimer can't reach. On this new ship, there are specially designed launching platforms that enables us to load Zodiacs easily and quickly, allowing you to spend more time exploring on the two to three daily landings. There are 15 Zodiacs that are boarded from either side of Deck 3 (sea level), perfect for when there is a group of fluffy cute penguin chicks that we need a photo of! Activity Platform Regardless of your destination, we offer a number of additional activities to allow you to see more of the environment. From kayaking and diving to climbing and ski touring, it's these optional activities that often leave the biggest impression on your trip as a whole. Onboard the Greg Mortimer, there is a spacious prep and loading platform for these activities and more - designed in consultation with our expert activity guides. Environmentally friendly Climate change and carbon

The Small Cruise Ship Collection
www.small-cruise-ships.com

01432 507 280 (within UK)

info@small-cruise-ships.com | small-cruise-ships.com



The Small Cruise Ship Collection

www.small-cruise-ships.com

small-cruise-ships.com

info@small-cruise-ships.com

emissions continue to be major issues that everyone needs to be aware of and actively managing. This includes reduced emissions into the air and sea, lower energy consumption, high fuel efficiency, reduced light pollution for minimal wildlife disruption and lower on-board plastic use. It's vital to also mention the state-of-the-art virtual anchoring technology of the X-BOW™, which means the ship can float anchorless while launching Zodiacs, kayaks etc, without disturbing delicate sea floor areas. Safety features This starts with the return-to-port equipment - not compulsory on a ship of this size - which duplicates the propulsion system. This enables the ship to maintain operating systems and comfort in the event of engine failure. Furthermore, the Greg Mortimer is Polar Code 6 compliant, holds BV class and is fully compliant with the latest SOLAS requirements. It's also built with a Rolls Royce stabiliser system. If there's an incident or accident during your adventure, the ship has an on-board, fully-stocked medical centre - where our trained medical team can provide necessary treatment in a timely fashion. Safety continues to be an issue that our team takes very serious and the Greg Mortimer allows us to create an environment where you can concentrate on the brilliant landscape and wildlife, without worrying about your wellbeing. Ship Life Greg Mortimer is designed to serve your every need. It's your bedroom, bathroom, lounge, dining room and even your observatory. Make yourself at home, the Greg Mortimer is yours to enjoy! Observation Points Let's face it - you don't want windowless rooms when travelling around some of the most beautiful locations around the world. This is why the Greg Mortimer is designed with plenty of dedicated observation spaces - ideal for keen bird spotters, wildlife watchers and those wanting to watch the scenery go past. From the indoor 180-degree lounge and outdoor 360-degree open deck, both

on deck 8, to the 270-degree open sundeck on level 7, there are plenty of observation points to share around the ship! If these are full, then you can take up a spot on one of the two hydraulic viewing platforms on deck 5. Aurora Expeditions also has an open bridge policy, which means at any point you can come up to the bridge and check out what the captain and officers are up to. From watching navigational practices to observing mapping techniques, you can get a firsthand look at the inner workings of the Greg Mortimer. Shore excursions Although the ship is fun, the real enjoyment comes from the many shore excursions that are available. Depending on the weather and itinerary, it's possible to take two to three landings daily, taking a look at everything from rock formations and ancient ruins to cute groups of penguins. We know time is of the essence in these wild locations, so the Greg Mortimer has been designed with 15 Zodiacs, which means you can maximise your time on shore. From four dedicated sea level launching platforms, transfers are quicker, safer and enable you to get closer to the action for a longer period of time. Just remember to charge your camera before you step onto the Zodiac! Activity options From kayaking and skiing to diving and climbing, these are one-in-a-lifetime opportunities that you need to take advantage of. Aboard the Greg Mortimer there is a specially designed launching platform for all activities, a concept overseen by our activity experts. This area also includes individual lockers in the expansive mudroom and rapid drying areas for wetsuits so you can quickly get warm after exploring in the elements! Dining From the moment you step onto the Greg Mortimer, we aim to give you the best hospitality service possible. Starting with the official Captain's welcome, as our guests, you're welcome to 24 hours complimentary coffee, tea and snack facilities in addition to the range of different menu

The Small Cruise Ship Collection

www.small-cruise-ships.com

01432 507 280 (within UK)

info@small-cruise-ships.com | small-cruise-ships.com



The Small Cruise Ship Collection

www.small-cruise-ships.com

small-cruise-ships.com

info@small-cruise-ships.com

options and courses for each meal. Meals are served in large dining room/restaurant with family style dining, perfect to swap stories with your new expedition family. Enjoy the range of house wine, beers and soft drinks included with dinner after a long day in the wild, preparing yourself for another exciting day to follow. On the last day of your trip, the team on the Greg Mortimer put on a special farewell four-course dinner and cocktails - a perfect way to reflect on your time on the ship and consolidate lifelong friendships with the people you've met on-board. On-board entertainment When you're relaxing during a sea day or you have a little downtime on the ship between excursions, what is there to do onboard the Greg Mortimer? Plenty! On all our expeditions, there are experts who lead presentations in the spacious lecture room so you can understand the region a little better. These often include topics as broad as history and culture to biology and climate change, these presentations aim to educate and entertain. If you're keen to just watch the surroundings and keep your eyes peeled for wildlife, you have access to two bars/lounges where the stunning floor to ceiling windows offer a special perspective on the landscape. The Greg Mortimer is also decked out with other facilities for your enjoyment. There is a library on Deck 5 with books and maps and a Wellness Centre complete with gym equipment, sauna and spa. Feeling a little sore after walking around all day? Treat yourself to a massage at the Wellness Centre and feels the aches disappear! Keen photographers and artists will revel in the multimedia room



on Deck 5.

The Small Cruise Ship Collection

www.small-cruise-ships.com

01432 507 280 (within UK)

info@small-cruise-ships.com | small-cruise-ships.com

The Small Cruise Ship Collection

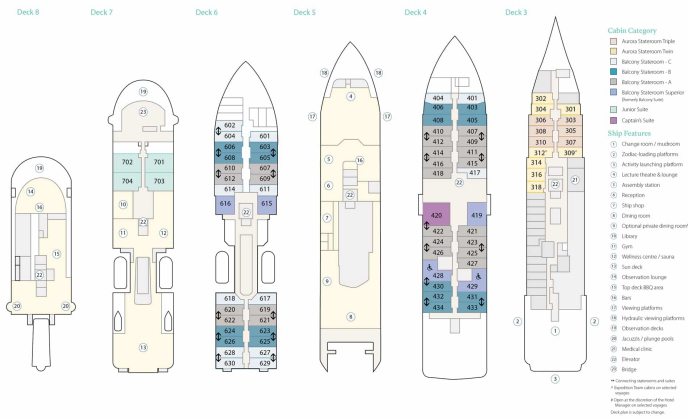
www.small-cruise-ships.com

small-cruise-ships.com

info@small-cruise-ships.com

INSIDE YOUR SHIP

The Greg Mortimer Deck Plan



Aurora Stateroom Superior



Aurora Stateroom Triple



Aurora Stateroom Triple Share



Aurora Stateroom Twin



Balcony Stateroom - A

Balcony Stateroom - B

Balcony Stateroom - C

Balcony Stateroom Category A

Balcony Stateroom Category B

Balcony Stateroom Category C

Balcony Stateroom Superior

Captain's Suite

Captain's Suite

Junior Suite

The Small Cruise Ship Collection
www.small-cruise-ships.com

01432 507 280 (within UK)

info@small-cruise-ships.com | small-cruise-ships.com

The Small Cruise Ship Collection

www.small-cruise-ships.com

small-cruise-ships.com

info@small-cruise-ships.com

PRICING

19-Jan-2025 to 31-Jan-2025

Balcony Stateroom Category A	£19400 GBP pp
Junior Suite	£26638 GBP pp
Balcony Stateroom Superior	£21171 GBP pp
Balcony Stateroom Category B	£18091 GBP pp
Captain's Suite	£31566 GBP pp
Aurora Stateroom Triple Share	£15319 GBP pp
Balcony Stateroom Category C	£17167 GBP pp
Aurora Stateroom Superior	£16705 GBP pp

19-Jan-2025 to 29-Jan-2025

Balcony Stateroom Category A	£19400 GBP pp
Balcony Stateroom Superior	£21171 GBP pp
Aurora Stateroom Superior	£16705 GBP pp
Balcony Stateroom Category B	£18091 GBP pp
Aurora Stateroom Triple Share	£15319 GBP pp
Captain's Suite	£31566 GBP pp
Balcony Stateroom Category C	£17167 GBP pp
Junior Suite	£26638 GBP pp

26-Jan-2025 to 07-Feb-2025

Captain's Suite	£31566 GBP pp
Junior Suite	£26638 GBP pp
Balcony Stateroom - C	£17167 GBP pp
Aurora Stateroom Twin	£15781 GBP pp
Balcony Stateroom Superior	£21171 GBP pp
Balcony Stateroom - A	£19400 GBP pp
Balcony Stateroom - B	£18091 GBP pp
Aurora Stateroom Triple	£15319 GBP pp

12-Feb-2025 to 22-Feb-2025

Balcony Stateroom Superior	£20478 GBP pp
Balcony Stateroom - A	£18784 GBP pp
Balcony Stateroom - B	£17475 GBP pp
Balcony Stateroom - C	£16551 GBP pp
Junior Suite	£25714 GBP pp
Captain's Suite	£30488 GBP pp
Aurora Stateroom Twin	£15242 GBP pp
Aurora Stateroom Triple	£14857 GBP pp

The Small Cruise Ship Collection

www.small-cruise-ships.com

small-cruise-ships.com

info@small-cruise-ships.com

PRICING

12-Feb-2025 to 24-Feb-2025

Captain's Suite	£30488 GBP pp
Balcony Stateroom - B	£17475 GBP pp
Aurora Stateroom Twin	£15242 GBP pp
Junior Suite	£25714 GBP pp
Balcony Stateroom Superior	£20478 GBP pp
Balcony Stateroom - A	£18784 GBP pp
Balcony Stateroom - C	£16551 GBP pp
Aurora Stateroom Triple	£14857 GBP pp

20-Feb-2025 to 02-Mar-2025

Balcony Stateroom Category B	£15550 GBP pp
Balcony Stateroom Superior	£18245 GBP pp
Balcony Stateroom Category A	£16705 GBP pp
Junior Suite	£22942 GBP pp
Captain's Suite	£27177 GBP pp
Aurora Stateroom Superior	£14395 GBP pp
Balcony Stateroom Category C	£14780 GBP pp
Aurora Stateroom Triple Share	£13240 GBP pp

20-Feb-2025 to 02-Mar-2025

Junior Suite	£22942 GBP pp
Balcony Stateroom Superior	£18245 GBP pp
Aurora Stateroom Triple Share	£13240 GBP pp
Captain's Suite	£27177 GBP pp
Balcony Stateroom Category A	£16705 GBP pp
Balcony Stateroom Category B	£15550 GBP pp
Balcony Stateroom Category C	£14780 GBP pp
Aurora Stateroom Superior	£14395 GBP pp

01-Feb-2026 to 12-Feb-2026

Captain's Suite	£29641 GBP pp
Balcony Stateroom Superior	£19862 GBP pp
Balcony Stateroom - C	£16089 GBP pp
Junior Suite	£24944 GBP pp
Balcony Stateroom - A	£18168 GBP pp
Balcony Stateroom - B	£16936 GBP pp
Aurora Stateroom Twin	£14857 GBP pp
Aurora Stateroom Triple	£14395 GBP pp



The Small Cruise Ship Collection

www.small-cruise-ships.com



small-cruise-ships.com

info@small-cruise-ships.com

PRICING

17-Mar-2026 to 28-Mar-2026

Junior Suite	£23866 GBP pp
Balcony Stateroom Category B	£16166 GBP pp
Aurora Stateroom Triple Share	£13779 GBP pp
Captain's Suite	£28332 GBP pp
Aurora Stateroom Superior	£15011 GBP pp
Balcony Stateroom Superior	£19015 GBP pp
Balcony Stateroom Category A	£17398 GBP pp
Balcony Stateroom Category C	£15396 GBP pp