

The Small Cruise Ship Collection

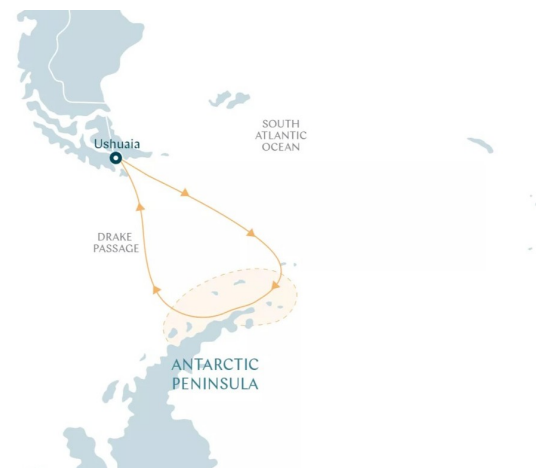
www.small-cruise-ships.com

small-cruise-ships.com

info@small-cruise-ships.com

ANTARCTIC PENINSULA DISCOVERY - FROM USHUAIA TO USHUAIA EXPEDITION CRUISE

This voyage takes you across Drake Passage straight to the frozen Antarctic Peninsula - where you'll discover mesmerizing icy wonders like the Gerlache Strait and exceptionally beautiful Antarctic Sound. Step ashore and get up close and personal with the local penguins for that perfect photo opportunity. Journey alongside polar specialists and share in their vast knowledge of these isolates regions.



ITINERARY

DAY 1 PRE CRUISE

One night pre-cruise accommodation with breakfast in a 4/5-star hotel or onboard

DAY 2 USHUAIA

Nestled in the foothills of the snow-capped Martial Range, Ushuaia's colourful streets and mismatched buildings cascade from the imposing mountains before coming to an abrupt halt at the shores of the Beagle Channel. As one of the world's southernmost cities, Ushuaia carries its 'end of the world' reputation well. The moody weather and dramatic surroundings certainly help. Board your boutique ship before departing for

The Small Cruise Ship Collection

www.small-cruise-ships.com

01432 507 280 (within UK)

info@small-cruise-ships.com | small-cruise-ships.com



The Small Cruise Ship Collection

www.small-cruise-ships.com

small-cruise-ships.com

info@small-cruise-ships.com

your journey through one of the most captivating wilderness regions of the world.

DAY 3-4 AT SEA

Spend your day at sea enjoying your boutique 5-star ship. Treat yourself to a spa day, attend an expert-led onboard lecture or enjoy the ocean views from the deck or the comfort of our Observation Lounge.

DAY 5-8 ANTARCTIC PENINSULA

Among captivating glaciers, majestic icebergs and snowy islands, the Antarctic Peninsula is where most visitors to the White Continent will live out their Antarctica dream. The Antarctic Peninsula, the most accessible area of the continent, hosts several scientific bases and some of the most interesting wildlife scenery, such as the extremely photogenic Lemaire Channel. Shore excursions might include Petermann Island, where among Adelie penguins, blue-eyed shags and skuas, huge, lumbering elephant seals haul out.

DAY 9-10 AT SEA

You can spend your day at sea enjoying the many facilities available. Head to the sauna, get in a workout in the state-of-the-art gym or relax in the jacuzzi whilst taking in incredible views along the way. If you prefer to learn a little more about your surroundings, listen to an informative talk or have a chat with one of our knowledgeable on-board experts.

DAY 11 USHUAIA

Ushuaia is the gateway to the White Continent. Found at the southernmost tip of South America in Argentinian Patagonia, the city is often described as "the End of the World". The city's mountain backdrop rises above the harbour and entrance to the Beagle Channel. The town itself is walkable and has a few small museums as well as pubs, restaurants and cafes - a good place to try Patagonian lamb cooked over open fire pits.

Please Note:

Itinerary changes and surprising experiences are part of expedition cruise life. The world has a habit of amazing us with incredible things when we yield to the unexpected. Join us with an open mind and a sense of adventure and you'll find that this can pay off in the most rewarding ways.



The Small Cruise Ship Collection

www.small-cruise-ships.com

small-cruise-ships.com

info@small-cruise-ships.com

YOUR SHIP: DIANA

YOUR SHIP: Diana

VESSEL TYPE:

LENGTH:

PASSENGER CAPACITY:

BUILT/REFURBISHED:

Launched in 2023, SH Diana provides elegant and spacious 5-star accommodation for 192 guests in 96 spacious staterooms and suites, the vast majority with large balconies. Operated by an onboard team of 140 she provides a high level of personal service, exploring the Mediterranean and its famous sites of antiquity. Now sit back, relax and take a moment to get to know this amazing new ship, purpose-designed for our unique cultural expedition cruises. Named after the Ancient Roman goddess of light, the moon, hunting and the wilderness, SH Diana been specially designed for worldwide cruising to explore the most inspiring and inaccessible places on earth. Building on the outstanding amenities of her sister ships, she adds a dedicated Multifunctional Room next to the Observation Lounge, a Private Dining Room for special occasions, and two tenders which bring guests a comfortable alternative to Zodiacs for expedition landings. A Polar Class 6 ice-strengthened hull combines with extra-large stabilisers to make your journey as comfortable as possible. SH Diana has been designed for immersive experiences, with extensive outside deck areas, multiple observation points and bright, open and relaxing public spaces with unobstructed views. The pleasure and safety of our

guests is paramount at all times, cared for by our attentive crew and seasoned expedition leaders. Cutting edge hygiene technology protects the health of all on board to the highest standards and includes air conditioning with UV sanitisation systems. SH Diana's 96 staterooms, including 11 suites, are each a superbly comfortable home from home and all feature panoramic sea views, a flame-effect fireplace, original works of art, plush couches, premium pocket sprung mattresses, en-suite bathrooms with glass-enclosed rain showers, and Egyptian cotton towels, bathrobes and sheets. A pillow menu offers customised head and neck comfort during rest, while a large flat screen TV, espresso machine with Illy premium coffee, tea making facilities with the finest Kusmi teas, and a minibar with refreshments enhance relaxation at any time. In-room dining is of course available at all hours. Wheelchair access Guests who use wheelchairs must bring their own, as we have only a small number of wheelchairs stored onboard for emergencies. To ensure ease of movement on the ship, wheelchairs and mobility aids must be no wider than 65cm. All mobility or medical equipment brought on board must be capable of being carried safely and must be declared before sailing. To ensure that all guests can safely evacuate during an emergency, guests requiring a wheelchair can only be accommodated in our ADA-accessible cabins. We offer an Oceanview and a Balcony stateroom on Diana. These staterooms are specifically designed to be completely ADA compliant and have a fully operable wheelchair-access wet unit. Diana has two lifts, serving every passenger deck apart from the Stargazing top deck, which is, therefore, more difficult to access, as are the Aft Marina and

The Small Cruise Ship Collection
www.small-cruise-ships.com

01432 507 280 (within UK)

info@small-cruise-ships.com | small-cruise-ships.com



Swan's Nest forward observation platform. Also, we don't have special equipment to access the swimming pool, jacuzzi, or sauna. Otherwise, the ship is entirely at your disposal. Many of the expeditions ashore in remote places are by Zodiac. Boarding these boats and returning aboard can present challenges for wheelchair users, as can navigating uneven terrain. These challenges are by no means always insurmountable, though, and our highly experienced crew is trained to provide reliable advice and assistance. They will make every effort to ensure wheelchair-using guests enjoy a memorable experience at each destination. Our general guidance, however, is to recommend wheelchair users travel with a companion for their ease and enjoyment. If you prefer to remain aboard, our panoramic interiors and ample open decks ensure an immersive, intimate experience of your inspiring



surroundings.

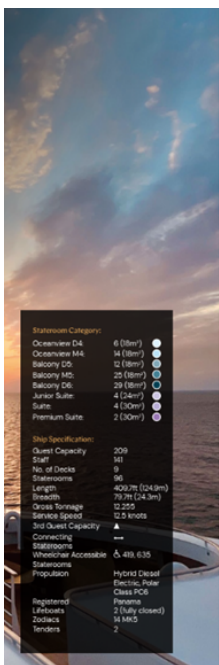
The Small Cruise Ship Collection

www.small-cruise-ships.com

small-cruise-ships.com

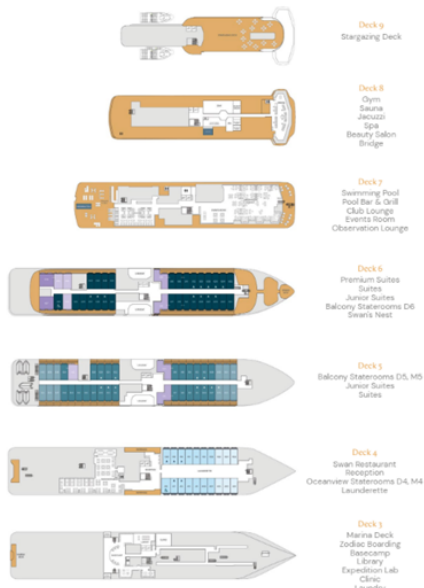
info@small-cruise-ships.com

INSIDE YOUR SHIP



Stateroom Category:
 Oceanview D4: 6 (88m)
 Oceanview M4: 14 (88m)
 Balcony D5: 12 (88m)
 Balcony M5: 25 (88m)
 Balcony D6: 29 (88m)
 Junior Suite: 4 (120m)
 Suite: 4 (120m)
 Premium Suite: 2 (120m)

Ship Specification:
 Guest Capacity: 209
 Staff: 101
 No. of Decks: 8
 Staterooms: 98
 Length: 402.7m (1243ft)
 Beam: 79.9m (243ft)
 Gross Tonnage: 12,205
 Service Speed: 12.5 knots
 1st Guest Capacity: 110
 Connecting: ---
 Staterooms: 5, 491, 635
 Wheelchair Accessible: ---
 Staterooms: ---
 Propulsion: Hybrid Diesel
 Class: PC6
 Parents: ---
 Registered Lifboats: 2 (fully closed)
 Deckchairs: 14 M/C
 Tenders: 2



Balcony D5



Balcony D6



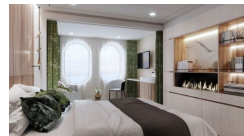
Balcony M5



Junior Suite



Oceanview D4



Oceanview M4



Premium Suite

Suite

The Small Cruise Ship Collection

www.small-cruise-ships.com

small-cruise-ships.com

info@small-cruise-ships.com

PRICING

30-Nov-2025 to 10-Dec-2025

Oceanview D4	£8252 GBP pp
Oceanview M4	£8660 GBP pp
Suite	£16106 GBP pp
Balcony M5	£10904 GBP pp
Premium Suite	£17585 GBP pp
Balcony D5	£10343 GBP pp

09-Dec-2025 to 19-Dec-2025

Oceanview M4	£8660 GBP pp
Oceanview D4	£8252 GBP pp
Balcony D5	£10343 GBP pp
Premium Suite	£17585 GBP pp
Suite	£16106 GBP pp
Balcony M5	£10904 GBP pp

18-Dec-2025 to 28-Dec-2025

Oceanview D4	£8252 GBP pp
Oceanview M4	£8660 GBP pp
Premium Suite	£17585 GBP pp
Balcony D5	£10343 GBP pp
Suite	£16106 GBP pp
Balcony M5	£10904 GBP pp

27-Dec-2025 to 06-Jan-2026

Balcony M5	£14525 GBP pp
Balcony D5	£13811 GBP pp
Suite	£21410 GBP pp
Oceanview M4	£11618 GBP pp
Premium Suite	£23603 GBP pp
Oceanview D4	£11057 GBP pp

06-Jan-2026 to 17-Jan-2026

Oceanview D4	£6365 GBP pp
Balcony M5	£8355 GBP pp
Balcony D5	£7949 GBP pp
Suite	£12385 GBP pp
Oceanview M4	£6675 GBP pp
Junior Suite	£11975 GBP pp
Balcony D6	£8765 GBP pp
Premium Suite	£13559 GBP pp



The Small Cruise Ship Collection

www.small-cruise-ships.com



small-cruise-ships.com

info@small-cruise-ships.com

PRICING

16-Jan-2026 to 26-Jan-2026

Suite	£15137 GBP pp
Oceanview D4	£7895 GBP pp
Balcony M5	£10241 GBP pp
Premium Suite	£16718 GBP pp
Oceanview M4	£8201 GBP pp
Balcony D5	£9833 GBP pp

22-Feb-2026 to 04-Mar-2026

Suite	£16106 GBP pp
Balcony M5	£10904 GBP pp
Balcony D5	£10343 GBP pp
Premium Suite	£17585 GBP pp
Oceanview D4	£8252 GBP pp
Oceanview M4	£8660 GBP pp

23-Feb-2026 to 05-Mar-2026

Oceanview M4	£6671 GBP pp
Balcony D6	£8762 GBP pp
Junior Suite	£11975 GBP pp
Suite	£12383 GBP pp
Oceanview D4	£6365 GBP pp
Balcony M5	£8354 GBP pp
Balcony D5	£7946 GBP pp
Premium Suite	£13556 GBP pp



The Small Cruise Ship Collection

www.small-cruise-ships.com

01432 507 280 (within UK)

info@small-cruise-ships.com | small-cruise-ships.com