

The Small Cruise Ship Collection

www.small-cruise-ships.com

small-cruise-ships.com

info@small-cruise-ships.com

ANTARCTIC PENINSULA IN DEPTH - FROM USHUAIA TO USHUAIA EXPEDITION CRUISE

Embrace the best of Antarctica and experience the unique flora and fauna of The South Shetland Islands on this life-changing voyage. Test your mettle as you cross the notorious Drake Passage to reach the world's most beautiful ice-filled waters, where magnificent icebergs creak, and breaching minke and humpback whales swim gracefully. Breathe in icy air as you cross the southern seas, and capture captivating memories that will last a lifetime.



ITINERARY

DAY 0 Pre Cruise

DAY 1 USHUAIA

Nestled in the foothills of the snow-capped Martial Range, Ushuaia's colourful streets and mismatched buildings cascade from the imposing mountains before coming to an abrupt halt at the shores of the Beagle Channel. As one of the world's southernmost cities, Ushuaia carries its 'end of the world' reputation well. The moody weather and dramatic surroundings certainly help. Board your boutique ship before departing for your journey through one of the most captivating wilderness regions of the world.

The Small Cruise Ship Collection
www.small-cruise-ships.com

01432 507 280 (within UK)

info@small-cruise-ships.com | small-cruise-ships.com



The Small Cruise Ship Collection

www.small-cruise-ships.com

small-cruise-ships.com

info@small-cruise-ships.com

DAY 2-4 DAY AT SEA

Spend your day at sea enjoying the facilities available onboard. Head to the sauna, get in a workout in the state-of-the-art gym or relax in the hot tub while taking in incredible views along the way. If you prefer to learn a little more about your surroundings, listen to an informative talk or have a chat with one of our knowledgeable experts.

DAY 5-10 ANTARCTIC PENINSULA

Among captivating glaciers, majestic icebergs and snowy islands, the Antarctic Peninsula is where most visitors to the White Continent live their Antarctica dream. It's the most accessible part, with scientific bases and incredible scenery, like the photogenic Lemaire Channel. Shore excursions might include Petermann Island, where among Adelie penguins, blue-eyed shags and skuas, huge, lumbering elephant seals haul out.

DAY 11-12 DAY AT SEA

Sea days are rarely dull. Take the time to sit back and let the world go by. The ship's observation decks provide stunning

views of the passing ocean. A day at sea gives you the opportunity to mingle with other passengers and share your experiences of this incredible trip or head to our library which is stocked full of reference books. Get an expert's view in one of our on-board lectures or perhaps perfect your photography skills with invaluable advice from our onboard professional photographers.

DAY 13 USHUAIA

Nestled in the foothills of the snow-capped Martial Range, Ushuaia's colourful streets and mismatched buildings cascade from the imposing mountains before coming to an abrupt halt at the shores of the Beagle Channel. As one of the world's southernmost cities, Ushuaia carries its 'end of the world' reputation well. The moody weather and dramatic surroundings certainly help. Board your boutique ship before departing for your journey through one of the most captivating wilderness regions of the world.

Please note:

Itineraries are subject to change.

The Small Cruise Ship Collection

www.small-cruise-ships.com

small-cruise-ships.com

info@small-cruise-ships.com

YOUR SHIP: DIANA

YOUR SHIP: Diana

VESSEL TYPE:

LENGTH:

PASSENGER CAPACITY:

BUILT/REFURBISHED:

Launched in 2023, SH Diana provides elegant and spacious 5-star accommodation for 192 guests in 96 spacious staterooms and suites, the vast majority with large balconies. Operated by an onboard team of 140 she provides a high level of personal service, exploring the Mediterranean and its famous sites of antiquity. Now sit back, relax and take a moment to get to know this amazing new ship, purpose-designed for our unique cultural expedition cruises. Named after the Ancient Roman goddess of light, the moon, hunting and the wilderness, SH Diana been specially designed for worldwide cruising to explore the most inspiring and inaccessible places on earth. Building on the outstanding amenities of her sister ships, she adds a dedicated Multifunctional Room next to the Observation Lounge, a Private Dining Room for special occasions, and two tenders which bring guests a comfortable alternative to Zodiacs for expedition landings. A Polar Class 6 ice-strengthened hull combines with extra-large stabilisers to make your journey as comfortable as possible. SH Diana has been designed for immersive experiences, with extensive outside deck areas, multiple observation points and bright, open and relaxing public spaces with unobstructed views. The pleasure and safety of our

guests is paramount at all times, cared for by our attentive crew and seasoned expedition leaders. Cutting edge hygiene technology protects the health of all on board to the highest standards and includes air conditioning with UV sanitisation systems. SH Diana's 96 staterooms, including 11 suites, are each a superbly comfortable home from home and all feature panoramic sea views, a flame-effect fireplace, original works of art, plush couches, premium pocket sprung mattresses, en-suite bathrooms with glass-enclosed rain showers, and Egyptian cotton towels, bathrobes and sheets. A pillow menu offers customised head and neck comfort during rest, while a large flat screen TV, espresso machine with Illy premium coffee, tea making facilities with the finest Kusmi teas, and a minibar with refreshments enhance relaxation at any time. In-room dining is of course available at



all hours.

The Small Cruise Ship Collection
www.small-cruise-ships.com

01432 507 280 (within UK)

info@small-cruise-ships.com | small-cruise-ships.com

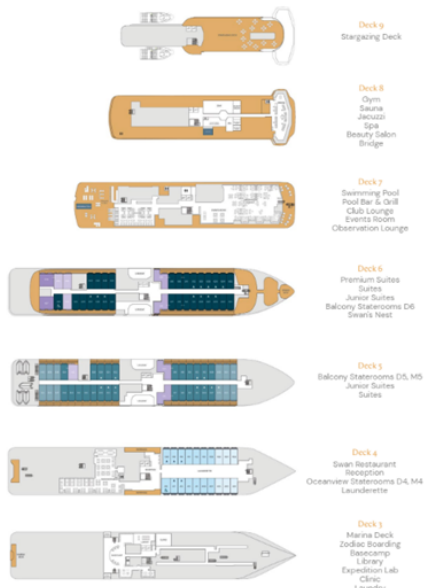
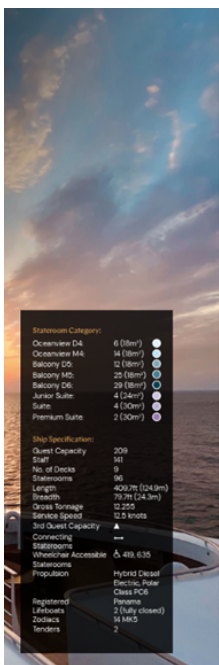
The Small Cruise Ship Collection

www.small-cruise-ships.com

small-cruise-ships.com

info@small-cruise-ships.com

INSIDE YOUR SHIP



Balcony D5



Balcony D6



Balcony M5



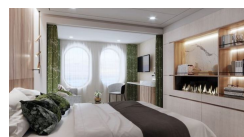
Junior Suite



Oceanview D4



Oceanview M4



Premium Suite

Suite



The Small Cruise Ship Collection

www.small-cruise-ships.com

small-cruise-ships.com

info@small-cruise-ships.com

PRICING

14-Dec-2024 to 26-Dec-2024

Balcony M5	£18665 GBP pp
Oceanview M4	£16179 GBP pp
Suite	£23935 GBP pp
Oceanview D4	£15445 GBP pp

14-Feb-2025 to 26-Feb-2025

Suite	£38855 GBP pp
Junior Suite	£33339 GBP pp
Balcony D6	£29435 GBP pp
Balcony M5	£26705 GBP pp
Balcony D5	£25475 GBP pp
Oceanview M4	£20799 GBP pp
Oceanview D4	£19865 GBP pp

02-Mar-2025 to 14-Mar-2025

Premium Suite	£23829 GBP pp
Suite	£20485 GBP pp
Balcony M5	£16029 GBP pp
Oceanview M4	£13925 GBP pp

04-Dec-2025 to 16-Dec-2025

Suite	£18295 GBP pp
Junior Suite	£17619 GBP pp
Balcony D6	£12939 GBP pp
Balcony M5	£12369 GBP pp
Balcony D5	£11745 GBP pp
Oceanview M4	£9875 GBP pp
Premium Suite	£20065 GBP pp
Oceanview D4	£9405 GBP pp

03-Mar-2026 to 15-Mar-2026

Balcony D5	£15279 GBP pp
Premium Suite	£25995 GBP pp
Suite	£23755 GBP pp
Balcony M5	£16115 GBP pp
Oceanview M4	£12889 GBP pp
Oceanview D4	£12215 GBP pp