



## ANTARCTICA DIRECT: FLY THE DRAKE PASSAGE FROM PUERTO NATALES

Experience the wild grandeur of the White Continent in a more efficient, expedient way. On this new itinerary, bypass the traditional Drake Passage crossing on a two-hour flight to and from Antarctica and discover all of the highlights without sacrificing the extra time. Travel with a diverse team of experts aboard National Geographic Explorer, the definitive expedition ship. Venture into channels and coves framed by towering peaks. Watch for whales off the bow; Zodiac cruise around enormous icebergs; and hike, kayak, and (in November) even possibly cross-country ski in complete tranquility. Choose an active agenda or surrender to the pleasures of relaxing downtime and shipboard camaraderie. Plus, get top shots with the help of a National Geographic Photography Expert.



### ITINERARY

DAY 1 Puerto Natales, Chile

Arrive in Puerto Natales. Originally a small fishing port, the town is nestled on the Last Hope Sound and boasts a stunning view of the sea surrounded by the Cerro Benitez Mountains--the gateway to Torres del Paine. Transfer from the airport to Hotel



Costaustralis or Remota Patagonia Lodge (or similar). Join us this evening for dinner and a briefing on the following day's activities.

Arrival Time: Arrive to the hotel in Puerto Natales by 3:00 p.m. local time.

Arrival City: Puerto Natales, Chile

Meals Included: Dinner

[DAY 2 Puerto Natales / King George Island / Embark Ship](#)

Following breakfast, check out of the hotel and transfer to the airport for our 2-hour direct flight to King George Island and the thrilling start to our Antarctic adventure. Home to a diverse assortment of wildlife--Weddell and elephant seals, Adelie, chinstrap and gentoo penguins--King George Island also has a human presence. Researchers from a wide range of countries, including the US, Chile, Argentina, and Brazil, call the various stations home. Our flight will land at the Chilean research station where the National Geographic Explorer will be waiting offshore. Board Zodiacs to embark the ship and set sail.

Meals Included: Breakfast, Lunch, Dinner

[DAYS 3-6 Exploring Antarctica](#)

With long hours of daylight at this time of year, we have ample opportunities to explore. Our schedule is flexible, allowing us to take advantage of the unexpected, whether we're watching whales at play off the bow of our ship, hiking alongside penguin highways, or enjoying an evening Zodiac cruise amid porpoising penguins.

While wildlife is magnificent, ice defines the Antarctic. You'll get to know ice up close and personal--from icebergs the size of islands, bergy bits and near-vertical glaciers, to the fragile, nearly invisible layers that have just begun to freeze. One day, we might set out by kayak to encounter towering icebergs at water level; embark on a Zodiac excursion in search of seals and blue-eyed shags; or walk amid thousands of Adelie and gentoo penguins. The next, we might experience the thrill of the ship crunching through pack ice.

Everywhere we go in Antarctica we're surrounded by opportunities to capture uniquely beautiful images. Along the way your expert expedition team will enrich every experience.

Meals Included: Breakfast, Lunch, Dinner

[DAY 7 King George Island / Disembark Ship / Puerto Natales](#)

This morning, the ship will be moored off of King George Island once again. Following disembarkation and Zodiac rides to shore,



our flight departs the White Continent and returns to Puerto Natales where we overnight at Hotel Costaustralis or Remota Patagonia Lodge (or similar).

Meals Included: Breakfast, Lunch, Dinner

DAY 8 Puerto Natales

Check out of our hotel and transfer to the airport to begin your journey homeward.

Departure Time: Depart after 5:00 p.m. local time.

Departure City: Puerto Natales, Chile

Meals Included: Breakfast

Please note:

Itineraries are subject to change.



# The Small Cruise Ship Collection

www.small-cruise-ships.com

small-cruise-ships.com

info@small-cruise-ships.com

## YOUR SHIP: NATIONAL GEOGRAPHIC EXPLORER

<b>YOUR SHIP:</b>	<b>National Geographic Explorer</b>
<b>VESSEL TYPE:</b>	<b>Luxury Expedition</b>
<b>LENGTH:</b>	<b>108 meters</b>
<b>PASSENGER CAPACITY:</b>	<b>148 (single &amp; twin cabins)</b>
<b>BUILT/REFURBISHED:</b>	<b>1982 / 2008</b>

\_National Geographic Explorer\_ is a state-of-the-art expedition ship. It is a fully stabilized, ice-class vessel, enabling it to navigate polar passages while providing exceptional comfort. It carries kayaks and a fleet of Zodiac landing craft. An Undersea Specialist operates a remotely operated vehicle (ROV) and sophisticated video equipment, extending access to the underwater world. Public areas : Bistro Bar; Chart Room; Restaurant; Global Gallery; Library, Lounge with full service bar and state-of-the-art facilities for films, slideshows and presentations; Mud Room with lockers for expedition gear, and Observation Lounge. Our "Open Bridge" provides guests an opportunity to meet our Officers and Captain and learn about navigation. Meals : Served in single seatings with unassigned tables for an informal atmosphere and easy mingling. Menu is international with local flair. Cabins : All cabins face outside with windows or portholes, private facilities and climate controls. Expedition Equipment : Zodiac landing craft, kayaks, Remotely Operated Vehicle (ROV), hydrophone, SplashCam, underwater video camera, Crow's Nest remote controlled camera, video microscope, snorkeling gear. Special Features : A full-time doctor, Undersea Specialist, LEX Photo Specialist and Video

Chronicler, Internet Cafe and laundry. Wellness : The vessel is staffed by two Wellness Specialists and features a glass enclosed Fitness Center, outdoor stretching area, two LEXspa treatment rooms



and Sauna.

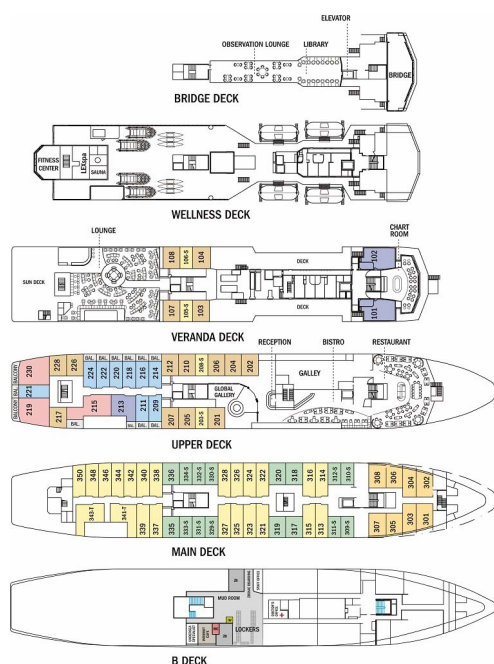
# The Small Cruise Ship Collection

www.small-cruise-ships.com

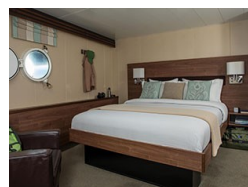
small-cruise-ships.com

info@small-cruise-ships.com

## INSIDE YOUR SHIP



Category 1



Category 2



Category 3



Category 4



Category 5

Category 6

Category 7

Category SA (solo)





# The Small Cruise Ship Collection

[www.small-cruise-ships.com](http://www.small-cruise-ships.com)



[small-cruise-ships.com](http://small-cruise-ships.com)

[info@small-cruise-ships.com](mailto:info@small-cruise-ships.com)

## PRICING

### 14-Nov-2025 to 21-Nov-2025

Category 4	£7963 GBP pp
Category 5	£9772 GBP pp
Category 6	£11243 GBP pp
Category 2	£7257 GBP pp
Category SA (solo)	£9444 GBP pp
Category 3	£7457 GBP pp
Category 1	£5877 GBP pp

### 08-Dec-2025 to 15-Dec-2025

Category 5	£9772 GBP pp
Category 6	£11243 GBP pp
Category 2	£7257 GBP pp
Category 4	£7963 GBP pp
Category SA (solo)	£9444 GBP pp
Category SB (solo)	£10821 GBP pp
Category 3	£7457 GBP pp

### 19-Nov-2025 to 26-Nov-2025

Category SB (solo)	£10821 GBP pp
Category 6	£11243 GBP pp
Category 3	£7457 GBP pp
Category 1	£6539 GBP pp
Category 4	£7963 GBP pp
Category 2	£7257 GBP pp
Category SA (solo)	£9444 GBP pp
Category 5	£9772 GBP pp
Category 7	£12349 GBP pp

### 03-Dec-2025 to 10-Dec-2025

Category 4	£8126 GBP pp
Category SB (solo)	£11042 GBP pp
Category SA (solo)	£9637 GBP pp
Category 6	£11473 GBP pp
Category 3	£7609 GBP pp
Category 1	£6673 GBP pp



The Small Cruise Ship Collection

[www.small-cruise-ships.com](http://www.small-cruise-ships.com)

**01432 507 280** (within UK)

[info@small-cruise-ships.com](mailto:info@small-cruise-ships.com) | [small-cruise-ships.com](http://small-cruise-ships.com)



# The Small Cruise Ship Collection

[www.small-cruise-ships.com](http://www.small-cruise-ships.com)



[small-cruise-ships.com](http://small-cruise-ships.com)

[info@small-cruise-ships.com](mailto:info@small-cruise-ships.com)

## PRICING

### 22-Dec-2025 to 29-Dec-2025

Category 4	£9779 GBP pp
Category SB (solo)	£13354 GBP pp
Category 1	£7996 GBP pp
Category SA (solo)	£11630 GBP pp
Category 2	£8894 GBP pp
Category 5	£12041 GBP pp
Category 6	£13882 GBP pp
Category 3	£9146 GBP pp

### 27-Dec-2025 to 03-Jan-2026

Category 5	£12041 GBP pp
Category 6	£13882 GBP pp
Category SB (solo)	£13354 GBP pp
Category 1	£7996 GBP pp
Category 3	£9146 GBP pp
Category 4	£9779 GBP pp
Category 2	£8894 GBP pp
Category 7	£15264 GBP pp
Category SA (solo)	£11630 GBP pp

### 10-Jan-2026 to 17-Jan-2026

Category 2	£8241 GBP pp
Category 1	£7416 GBP pp
Category 4	£9053 GBP pp
Category 6	£12821 GBP pp
Category 3	£8472 GBP pp
Category 7	£14088 GBP pp
Category SA (solo)	£10752 GBP pp

### 15-Jan-2026 to 22-Jan-2026

Category 4	£8872 GBP pp
Category 7	£13806 GBP pp
Category 6	£12564 GBP pp
Category 5	£10907 GBP pp
Category SB (solo)	£12089 GBP pp
Category SA (solo)	£10537 GBP pp
Category 3	£8302 GBP pp
Category 2	£8075 GBP pp
Category 1	£7268 GBP pp



The Small Cruise Ship Collection

[www.small-cruise-ships.com](http://www.small-cruise-ships.com)

**01432 507 280** (within UK)

[info@small-cruise-ships.com](mailto:info@small-cruise-ships.com) | [small-cruise-ships.com](http://small-cruise-ships.com)



# The Small Cruise Ship Collection

[www.small-cruise-ships.com](http://www.small-cruise-ships.com)



[small-cruise-ships.com](http://small-cruise-ships.com)

[info@small-cruise-ships.com](mailto:info@small-cruise-ships.com)

## PRICING

### 29-Jan-2026 to 05-Feb-2026

Category SB (solo)	£12089 GBP pp
Category 6	£12564 GBP pp
Category 4	£8872 GBP pp
Category 5	£10907 GBP pp
Category 2	£8075 GBP pp
Category SA (solo)	£10537 GBP pp
Category 7	£13806 GBP pp
Category 1	£7268 GBP pp
Category 3	£8302 GBP pp

### 03-Feb-2026 to 10-Feb-2026

Category 2	£8075 GBP pp
Category 3	£8302 GBP pp
Category 4	£8872 GBP pp
Category 6	£12564 GBP pp
Category 1	£7268 GBP pp
Category SA (solo)	£10537 GBP pp
Category SB (solo)	£12089 GBP pp
Category 5	£10907 GBP pp
Category 7	£13806 GBP pp

### 17-Feb-2026 to 24-Feb-2026

Category 3	£8302 GBP pp
Category 2	£8075 GBP pp
Category 6	£12564 GBP pp
Category 1	£7268 GBP pp
Category SB (solo)	£12089 GBP pp
Category 5	£10907 GBP pp
Category SA (solo)	£10537 GBP pp
Category 4	£8872 GBP pp
Category 7	£13806 GBP pp

### 22-Feb-2026 to 01-Mar-2026

Category 6	£12200 GBP pp
Category 2	£7711 GBP pp
Category SB (solo)	£11724 GBP pp
Category 7	£13442 GBP pp
Category SA (solo)	£10172 GBP pp
Category 4	£8507 GBP pp
Category 5	£10543 GBP pp
Category 3	£7938 GBP pp
Category 1	£6903 GBP pp



The Small Cruise Ship Collection

[www.small-cruise-ships.com](http://www.small-cruise-ships.com)

01432 507 280 (within UK)

[info@small-cruise-ships.com](mailto:info@small-cruise-ships.com) | [small-cruise-ships.com](http://small-cruise-ships.com)