

The Small Cruise Ship Collection

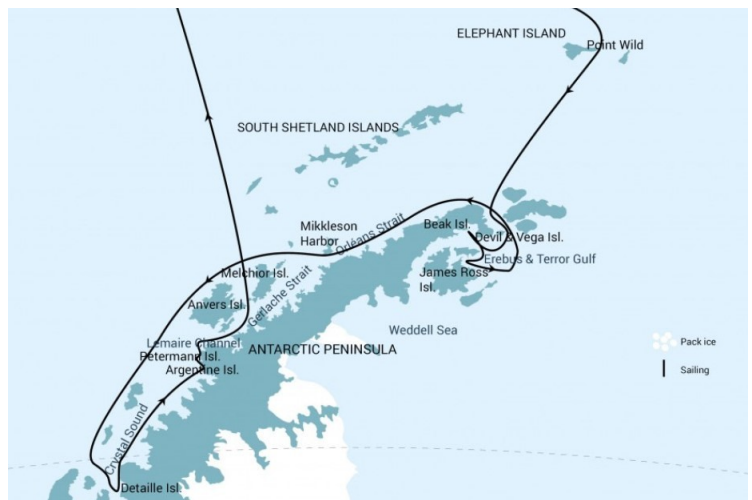
www.small-cruise-ships.com

small-cruise-ships.com

info@small-cruise-ships.com

ANTARCTICA - ELEPHANT ISLAND - WEDDELL SEA - POLAR CIRCLE WITH PLACIUS

This expansive expedition takes you into the Antarctic Circle, combining the rich animal life of the Weddell Sea with the surreal shores and islands of the Antarctic Peninsula. Such key landing sites as the legendary Elephant Island and Crystal Sound make this voyage truly exceptional. Antarctica - Elephant Island - Weddell Sea - Polar Circle: - This adventurous polar expedition in the Antarctic Circle combines the exciting Weddell Sea with the amazing Antarctic Peninsula, including such iconic landing sites as Ernest Shackleton's legendary Elephant Island and the many icy and wildlife-filled islands of Crystal Sound.



ITINERARY

Day 1: End of the world, start of a journey

Your voyage begins where the world drops off. Ushuaia, Argentina, reputed to be the southernmost city on the planet, is located on the far southern tip of South America. Starting in the afternoon, you embark from this small resort town on Tierra del Fuego, nicknamed "The End of the World," and sail the mountain-fringed Beagle Channel for the remainder of the evening.

Day 2 - 3: Path of the polar explorers

Over the next two days on the Drake Passage, you enjoy some of

The Small Cruise Ship Collection

www.small-cruise-ships.com

01432 507 280 (within UK)

info@small-cruise-ships.com | small-cruise-ships.com



The Small Cruise Ship Collection

www.small-cruise-ships.com

small-cruise-ships.com

info@small-cruise-ships.com

the same experiences encountered by the great polar explorers who first charted these regions: cool salt breezes, rolling seas, maybe even a fin whale spouting up sea spray. After passing the Antarctic Convergence - Antarctica's natural boundary, formed when north-flowing cold waters collide with warmer sub-Antarctic seas - you are in the circum-Antarctic upwelling zone. Not only does the marine life change, the avian life changes too. Wandering albatrosses, grey-headed albatrosses, black-browed albatrosses, light-mantled sooty albatrosses, cape pigeons, southern fulmars, Wilson's storm petrels, blue petrels, and Antarctic petrels are a few of the birds you might see.

Day 4: From Point Wild to the Weddell Sea

We will arrive early to the famous Point Wild, Elephant Island, where Shackleton's crew made their first landing after the loss of their ship, Endurance. This inhospitable spit of land is a favorite among our guests, and if conditions permit, we will offer activities around the point before setting off for the Weddell Sea.

Day 5: Weddell Sea Devil Island

Today you enter the wondrous Weddell Sea, a relatively unvisited area in which we hope to carry out activities in Erebus and Terror Gulf. We may also visit such places such as Beak Island and Devil Island, which boast some stunning scenery as well as the pack ice for which the Weddell Sea is famous.

Day 6: Exploring the most remote regions

As we continue to explore the area of Erebus and Terror Gulf, we look for new opportunities for activities. You may also visit Vega Island, experiencing the wilderness of Antarctica in its most remote places.

Day 7: Orléans Strait whale search

Now we sail down the western side of the Antarctic Peninsula, entering the Orleans Strait. Here we hope to see humpback and orca whales as we sail toward Mikklesen Harbor for our afternoon activities.

Day 8: Port monuments and island wildlife

Passing the Lemaire Channel, you next arrive in the area of Port Charcot, where there is a cairn that was erected by the French Antarctic Expedition of 1903 - 05. In the afternoon, we head to Petermann Island to see a great variety of birdlife. You might also enjoy Zodiac cruises among icebergs that are highly popular with leopard seals and crabeater seals. Minke whales, humpbacks, and gentoo penguins can also be found here.

Day 9 - 10: Detaille Island's historic station

Today we reach Crystal Sound, viewing the area's beautiful ice formations and wildlife before landing at Detaille Island. This remote island was once home to a British research station that is now an historic monument.

The Small Cruise
Ship Collection

www.small-cruise-ships.com

01432 507 280 (within UK)

info@small-cruise-ships.com | small-cruise-ships.com



The Small Cruise Ship Collection

www.small-cruise-ships.com

small-cruise-ships.com

info@small-cruise-ships.com

Day 11: Amazing Argentine islands

Please Note:

Next you arrive at the Yalour Islands, a small archipelago composed mostly of isolated rocks and one principal island that offers us a rewarding landing. Home to Adelie penguins and some of the most southerly gentoos in the world, Yalour also has small patches of bearded and crustose lichen, including xanthoria, buellia, caloplaca, and usnea. Extensive moss beds and some Antarctic hair grass (*Deschampsia antarctica*) can be seen as well.

All itineraries are for guidance only. Programs may vary depending on ice, weather, and wildlife conditions. Landings are subject to site availabilities, permissions, and environmental concerns per IAATO regulations. Official sailing plans and landing slots are scheduled with IAATO prior to the start of the season, but the expedition leader determines the final plan. Flexibility is paramount for expedition cruises. The average cruising speed for our vessel is 10.5 knots.

Day 12: Farewell to Antarctica

We have our farewell to Antarctica in the Melchior Islands for our final activities before heading towards the Drake Passage.

Day 13 - 14: Familiar seas, familiar friends

Your return voyage is far from lonely. While crossing the Drake, you're again greeted by the vast array of seabirds remembered from the passage south. But they seem a little more familiar to you now, and you to them.

Day 15: There and back again

Every adventure, no matter how great, must eventually come to an end. It's now time to disembark in Ushuaia, but with memories that will accompany you wherever your next journey leads.

The Small Cruise Ship Collection

www.small-cruise-ships.com

small-cruise-ships.com

info@small-cruise-ships.com

YOUR SHIP: PLANCIUS

YOUR SHIP:	Plancius
VESSEL TYPE:	Expedition
LENGTH:	
PASSENGER CAPACITY:	
BUILT/REFURBISHED:	

M/V "Plancius" was built in 1976 as an oceanographic research vessel for the Royal Dutch Navy and was named "Hr. Ms. Tydeman". The ship sailed for the Dutch Navy until June 2004 when she was converted into an expedition cruise ship. The vessel was completely rebuilt as a 114-passenger vessel in 2009 and complies with the latest SOLAS-regulations (Safety Of Life At Sea). M/v "Plancius" is classed by Lloyd's Register in London and flies the Dutch flag. "Plancius" accommodates 114 passengers in 53 passenger cabins with private toilet and shower in 4 quadruple private cabins, 39 twin private cabins (ca. 15 square meters) and 10 twin superior cabins (ca. 21 square meters). All cabins offer lower berths (either two single beds or one queen-size bed), except for the 4 quadruple cabins (for 4 persons in 2x upper and lower beds). The vessel offers a restaurant/lecture room on deck 3 and a spacious observation lounge (with bar) on deck 5 with large windows, offering full panorama view. Plancius has large open deck spaces (with full walk-around possibilities on deck 3), giving excellent opportunities to enjoy the scenery and wildlife. She is furthermore equipped with 10 Mark V zodiacs, including 40 HP 4-stroke outboard engines and 2 gangways on the starboard

side, guaranteeing a swift zodiac operation. M/v "Plancius" is comfortable and nicely decorated, but is not a luxury vessel. Our voyages in the Arctic and Antarctic regions are and will still be primarily defined by an exploratory educational travel programme, spending as much time ashore as possible. The vessel is equipped with a diesel-electric propulsion system which reduces the noise and vibration of the engines considerably. The 3 diesel engines generate 1.230 horse-power each, giving the vessel a speed of 10 - 12 knots. The vessel is ice-strengthened and was specially built for oceanographic voyages. M/v "Plancius" is manned by 17 nautical crew, 19 hotel staff (6 chefs, 1 hotel manager, 1 steward-barman and 11 stewards / cabin cleaners), 8 expedition staff (1 expedition leader and 7 guides-lecturers)



and 1 doctor.

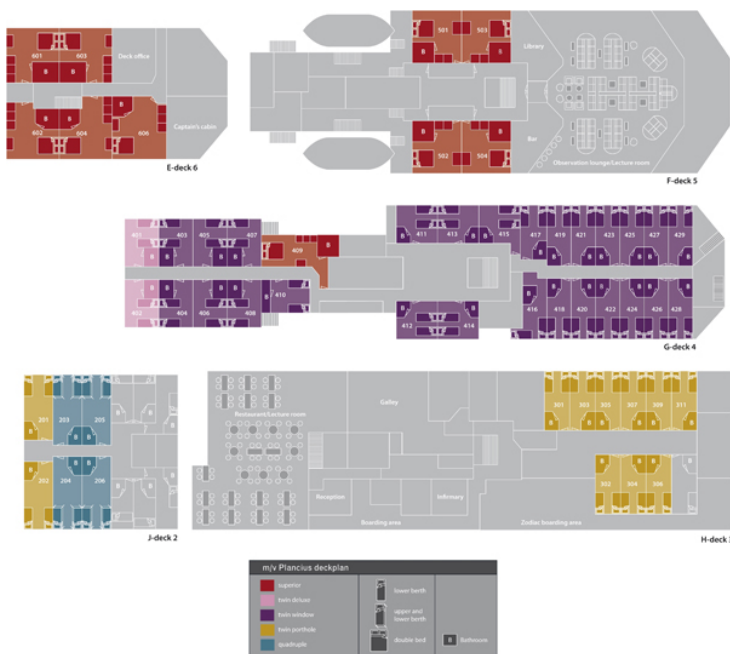
The Small Cruise Ship Collection

www.small-cruise-ships.com

small-cruise-ships.com

info@small-cruise-ships.com

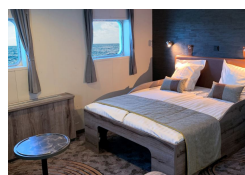
INSIDE YOUR SHIP



Quadruple Porthole

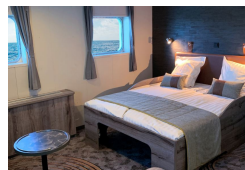


Superior



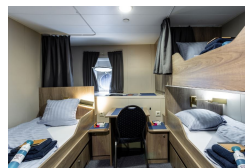
Superior - Sole Occupancy

Triple Porthole



Twin Deluxe

Twin Porthole





The Small Cruise Ship Collection

www.small-cruise-ships.com



small-cruise-ships.com

info@small-cruise-ships.com

PRICING

09-Mar-2025 to 23-Mar-2025

Quadruple Porthole	£8245 GBP pp
Triple Porthole	£10072 GBP pp
Twin Porthole	£10072 GBP pp
Twin Window	£10540 GBP pp
Twin Deluxe	£11262 GBP pp
Superior	£12027 GBP pp
Superior - Sole Occupancy	£20446 GBP pp

09-Mar-2026 to 23-Mar-2026

Twin Window	£11011 GBP pp
Triple Porthole	£10549 GBP pp
Twin Porthole	£10549 GBP pp
Superior	£12820 GBP pp
Twin Deluxe	£12012 GBP pp
Quadruple Porthole	£8624 GBP pp