

# The Small Cruise Ship Collection

www.small-cruise-ships.com

small-cruise-ships.com

info@small-cruise-ships.com

## ANTARCTICA, PATAGONIA AND CHILEAN FJORDS EXPEDITION

The frozen continent Start in the romance-infused city of Buenos Aires before heading to Ushuaia to board your hybrid-powered expedition ship. We sail the Drake Passage to the white wilderness of Antarctica where you'll spend five beautiful days. Visiting Antarctica in March is an excellent opportunity to see wildlife. Penguin chicks are fledging, and the nutrient-rich waters attract whales. Our Expedition Team will also give fascinating lectures and lead the way in landings and ice cruises. Exactly where we go and when is down to the sea ice and weather conditions on the day, but we'll always bring you to the best spots available at the time. South America adventure We'll go straight back into adventure mode and attempt a landing at Cape Horn. Waves from the Pacific and Atlantic converge here, creating challenging conditions. This fact makes it all the more exciting if we do succeed. You'll then continue to the small town of Puerto Williams, and we'll try cruising into Garibaldi Fjord, a UNESCO Biosphere Reserve and home to a glacier of the same name. Patagonia's National Parks Arriving in Puerto Natales, you might join an optional excursion to the world-renowned Torres del Paine National Park. Next is Pio XI, the longest glacier in the southern hemisphere outside Antarctica. The isolated but inviting communities of Puerto Edén and Caleta Tortel follow. Castro is a charming rustic city with access to Chiloé National Park, while Niebla and its old Spanish fortress is your last stop before the vibrant hilltop city of Valparaíso.



### ITINERARY

DAY 1 Tango is only the beginning

Welcome to Buenos Aires, the 'Paris of South America' Kickstart your adventure with an overnight stay in Buenos Aires, famously called the 'Paris of South America'. A sensuous fusion of faded European splendour and Latin American panache, Buenos Aires is home to numerous fine and modern art museums, landscaped parks and one of the world's greatest opera houses. Spend the evening at your leisure, sampling an authentic steak dinner at one of the city's many parrillas or sightseeing some of the city's best-known landmarks at Plaza de Mayo. You'll also want to join the locals in an informal tango lesson, or at the very least, watch a dance show. Pre-Programme Fancy getting even more out of your adventure? If that's the case then why not

The Small Cruise Ship Collection

www.small-cruise-ships.com

01432 507 280 (within UK)

info@small-cruise-ships.com | small-cruise-ships.com



## The Small Cruise Ship Collection

[www.small-cruise-ships.com](http://www.small-cruise-ships.com)

[small-cruise-ships.com](http://small-cruise-ships.com)

[info@small-cruise-ships.com](mailto:info@small-cruise-ships.com)

extend your stay with an optional Pre-Programme that explores wild Patagonia.

### DAY 2 Launch your expedition in Ushuaia, the world's southernmost city

We fly first thing in the morning to Ushuaia, a place nicknamed the 'End of the World'. It's here in the self-proclaimed southernmost city in the world where your expedition truly begins. Your basecamp at sea is the world's first hybrid-powered expedition ship, MS Roald Amundsen. Once on board, you'll meet the Expedition Team and attend a mandatory safety meeting. After a welcome dinner, you can familiarise yourself with our state-of-the-art vessel, specially designed for sustainable voyages in polar waters. On our way through the scenic Beagle Channel, you can watch out for the rare endemic Peale's dolphin and other wildlife as we set sail.

### DAY 3-4 Crossing to another continent

Enjoy two relaxing days at sea crossing the Drake Passage. Over the next two days, you'll cross the fabled Drake Passage, gateway to the Antarctic. Prepare yourself for what lies ahead through lectures from our Expedition Team in the dedicated Science Center. You'll learn about Antarctica's explorer history, wildlife, and how you can get involved in Citizen Science programmes. Sea days are also an opportunity to unwind. Whether you're soaking in a hot tub, the infinity pool or relaxing in the spectacular panoramic sauna, you won't miss out on any of the breathtaking views around you. When you're hungry, you can sate your appetite in one of our three stylish restaurants.

### DAY 5-9 Where nature reigns supreme

Witness nature's unbridled power and the marvellous wildlife of the frozen continent. Welcome to Antarctica, an endless wilderness of ice, icebergs, and glaciers. It's a place where

nature is king and the rest of us, mere observers. Over the next five days, you'll go on walks ashore, cruising by icebergs and glaciers, and spotting seabirds, seals, whales and penguin colonies. Sticking to the motto 'take nothing but pictures, leave nothing but footprints,' our Expedition Team will help you adhere closely to strict safety and sustainability procedures. Exactly where we go and when is down to conditions on the day, but we'll always bring you to the best spots available at the time.

### DAY 10-11 A return to open waters

Prepare for the next chapter of your adventure with two absorbing days at sea. After five days capturing as much of Antarctica as you can on your camera, you will need some time to reflect on this life-affirming experience. The two days back across the Drake Passage will certainly give you that – and a whole lot more. If you want, you can get more involved with the Citizen Science programme and analyse samples at the microscopic level. You can also attend more environmentally-themed lectures on topics such as the changing climate or oceanic plastic pollution, and we will reflect on our experiences in the frozen continent. When you're ready to kick back and relax, you can do that too.

### DAY 12 Explore Ushuaia

Stunning views and beautiful nature await at the 'End of the World'. Today you'll spend the day exploring Ushuaia. Head to the Galería Temática - Historia Fueguina if you want to learn more about the city's fascinating history. Filled with photos and exhibits on Ushuaia's first settlers, its discovery by Europeans and Charles Darwin's later visit, it's a definite must-visit. You can get your passport stamped at the Tourist Information Centre, marking your visit to the world's southernmost city. Sample some of the delicious local cuisine, or spend the day hiking one

The Small Cruise Ship Collection

[www.small-cruise-ships.com](http://www.small-cruise-ships.com)

01432 507 280 (within UK)

[info@small-cruise-ships.com](mailto:info@small-cruise-ships.com) | [small-cruise-ships.com](http://small-cruise-ships.com)



## The Small Cruise Ship Collection

[www.small-cruise-ships.com](http://www.small-cruise-ships.com)

[small-cruise-ships.com](http://small-cruise-ships.com)

[info@small-cruise-ships.com](mailto:info@small-cruise-ships.com)

of the many trails found just outside the city. With spectacular mountain views and tranquil lakes, you won't be disappointed you made the effort.

### DAY 13 Where two oceans collide

Be one of the few to reach the fabled Cape Horn. Once we exit the scenic Beagle Channel, we journey to the legendary Cape Horn. The area around the island is where the open waters of the Atlantic and Pacific collide, creating powerful waves that are made even stronger by swirling westerly winds. Rounding Cape Horn is a feat not many people have experienced. Given the notoriety of these turbulent waters, we can't guarantee a landing, but if fortune favours us with weather stable enough to set foot on the island and go up to the cape, you'll be among a select few people in the world able to boast about it.!

### DAY 14 Smalltown atmosphere in beautiful surroundings

Wild, remote and made for walking, Puerto Williams is a natural paradise. One of three contenders for the world's southernmost city, Puerto Williams has a quiet atmosphere more akin to a small town. Visit the Martin Gusinde Anthropological museum for the history of the people and the city. You'll see Yahgan artefacts, maps, photographs, and a traditional canoe. You can also go for walks and immerse yourself in the gorgeous scenery, whether on your own or as part of a guided optional excursion. If the weather is nice, there might be also opportunities for kayaking. Have your binoculars at the ready to spot seabirds, including the mighty albatross.

### DAY 15 The sights and sounds of a glacier

See one of the most impressive glaciers in Chile. The goal for the day is to go for a scenic cruise in Garibaldi Fjord in Alberto de Agostini National Park, all the way up to Garibaldi Glacier. This

is a stunning region where the Andes tumble into the Pacific and great glaciers feed ice, and sometimes icebergs, into the beautiful Chilean fjords. If weather and waters are kind, you'll get to arrive at Garibaldi Glacier at the head of the fjord, one of the most impressive glaciers in all of Chile. The fjord is also a UNESCO Biosphere Reserve and home to seals, sea lions and sea birds, including the Andean Condor.

### DAY 16 Cruising through paradise

Islands, glaciers and steep mountains – drink in the views of the Chilean fjords. This wild and remote region was once the domain of canoe-faring indigenous people who lived, sailed and hunted here for centuries. Go out on deck and admire the serenity of this maze of waterways, surrounded by islands, glaciers and towering mountains while looking for wildlife such as elephant seals, dolphins and whales. Not all the lectures from the Expedition Team will be indoors. If the ship attracts seabirds who come to fly alongside us, they might help you spot and identify them out on deck. An onboard photographer will also be available to help you with your expedition photography.

### DAY 17-18 Torres del Paine National Park

Discover the charms of Puerto Natales, gateway to Torres del Paine National Park. Puerto Natales is the closest city to the world-renowned Torres del Paine National Park. Join our optional excursion to the park to discover a landscape of stunning variety, from vast open steppes to rugged mountain terrain topped by looming peaks that host a variety of wildlife. You'll be watching for llamas, pumas and foxes, in addition to more than 100 species of birds, including the mighty Andean Condor. Suppose you decide to spend time in Puerto Natales itself. In that case, the city has trendy eateries, Bohemian-type bars, a terrific gin distillery and an artisan village selling various crafts

The Small Cruise Ship Collection  
[www.small-cruise-ships.com](http://www.small-cruise-ships.com)

01432 507 280 (within UK)

[info@small-cruise-ships.com](mailto:info@small-cruise-ships.com) | [small-cruise-ships.com](http://small-cruise-ships.com)



## The Small Cruise Ship Collection

[www.small-cruise-ships.com](http://www.small-cruise-ships.com)

[small-cruise-ships.com](http://small-cruise-ships.com)

[info@small-cruise-ships.com](mailto:info@small-cruise-ships.com)

and gifts.

### DAY 19 The giant that's still growing

Pio XI's staggering dimensions will astonish you. Growing as much as 150 ft a day, the sprawling Pio XI Glacier in Bernardo O'Higgins National Park is the longest in the southern hemisphere outside of Antarctica. To reach it, we'll sail east through the beautiful Eyre Fjord, which is lined by temperate forest. Dolphins are known to swim the waters here, accompanied by seabirds including terns. If the weather and wave conditions are right, we'll launch our expedition boats to explore the fjord and glacier, taking care not to get too close. Ice occasionally calves off the Pio XI's wall into the waters below, creating a thrilling sight and sound to behold.

### DAY 20 A tiny piece of paradise

Remote Puerto Edén, a beautiful village with a unique community. A paradise off the beaten path, Puerto Edén is only accessible by sea and is one of Chile's hardest-to-reach inhabited places. There are no roads to, from or even within the village, just boardwalks and footpaths that connect the homes of its fewer-than 200 inhabitants. The village is home to the last known community of Kawéskar people, designated a Living Human Treasure by UNESCO. You can meet freely and chat with the locals. You'll admire their synergy with local plants and marine animals and no doubt respect their desire to protect their precious history and customs.

### DAY 21 Aysén charm, Chilotan architecture

Explore Caleta Tortel, the timber town built on stilts. Thanks to the melting ice of the surrounding glaciers, the waters around Caleta Tortel are an eye-catching mixture of turquoise and milky-blue colours. If the weather cooperates, you'll be able to

get up close to the water on a kayaking excursion. There are no streets within the village per se, but instead there's a labyrinthine walkway system that you can wander around. Typical of Chilotan architecture, many of the houses are constructed on stilts. You'll enjoy a signature warm welcome from the locals and maybe even a performance by folk dancers. A village tour with a local guide is available as an optional extra.

### DAY 22 The blue waters of Patagonia

Enjoy the blue waters of Patagonia as we travel in the wake of some famous explorers. Your expedition cruise continues north through the waters of Patagonia. When Magellan sailed here in 1520, he named the allegedly gigantic locals 'Patagons' after a related literary character in a Spanish novel. The name stuck. Fortunately, the only giants that inhabit Patagonia are the whales you'll be scanning the seas for as we sail. There will be more interesting lectures to attend, perhaps about seabirds, geography or indigenous culture. Join an Art Workshop where you can paint something from your experiences so far, or dive into one of the Citizen Science projects in the Science Center.

### DAY 23 Chilean charm

Colourful houses on stilts, craft markets and history – welcome to Castro Set amidst windswept hills and lush green flora, Castro is the capital of Chiloé Island. Most visitors make a beeline for Gamboa wharf district to see the famous palafitos - brightly painted wooden houses built atop stilts along Fiordo de Castro. But this little city has so much more to offer. Head to the main town square to visit the UNESCO-listed church, Iglesia San Francisco. The contemporary Museum of Modern Art of Chiloé is equally worth a visit. Hungry? Sample the local cuisine in one of the many great restaurants. An optional excursion to Chiloé National Park nearby is also available.

The Small Cruise Ship Collection  
[www.small-cruise-ships.com](http://www.small-cruise-ships.com)

01432 507 280 (within UK)

[info@small-cruise-ships.com](mailto:info@small-cruise-ships.com) | [small-cruise-ships.com](http://small-cruise-ships.com)



## The Small Cruise Ship Collection

[www.small-cruise-ships.com](http://www.small-cruise-ships.com)

[small-cruise-ships.com](http://small-cruise-ships.com)

[info@small-cruise-ships.com](mailto:info@small-cruise-ships.com)

### DAY 24 The fortress in the fog

Niebla, the small seaside town with a wonderfully preserved fort Niebla, Spanish for 'fog', is set on a picturesque peninsula with views of Corral Bay on one side and the mouth of Valdivia River on the other. Take a stroll on the wide beach and, if the market Feria Costumbrista is open, you can sample traditional empanadas, antichuchos, churros and more. You'll likely spend most of your time here exploring the ruins of the old Spanish fort. Learn more about the region's strategic history in the museum, walk around the lighthouse, pose next to the row of rusted canons, and take in the beautiful views across the river and bay.

### DAY 25 Sailing north

More relaxing time at sea to indulge yourself aboard the ship. Make the most of your time on MS Roald Amundsen, whether you prefer scanning the seas for birds and marine life, sitting in a hot tub on deck, or enjoying your favourite drink in the Explorer Lounge & Bar. The Expedition Team will recap the highlights of your cruise and keep you engaged. Our onboard photographer may even present a slideshow of photos taken on your adventurous expedition cruise.

### DAY 26 UNESCO's 'Jewel of the Pacific'

End your expedition cruise in Valparaíso, Chile's cultural hub. Your 26-day expedition cruise ends when we reach the seaport of Valparaíso - a city built on steep hillsides overlooking the ocean. This UNESCO-listed city is a maze of monuments, churches, historical funicular lifts, cobblestone alleys, colourful houses and charming plazas. As you bid farewell to MS Roald Amundsen, as well as the crew and the Expedition Team, we feel sure that you'll be basking in the glow of experiencing some of the most beautiful scenery on the planet. Perhaps you'll already

be planning your next trip ... if so, we look forward to welcoming you on board again soon! Post-Programme You'll likely be fascinated by this colourful and unusual city, so why not arrange to stick around for an extra day or two and join an optional city tour followed by an overnight in Santiago de Chile. From here, you can also join a Post-Programme to Easter Island, famous for its mysterious statues of giant heads.

#### Please Note:

Itineraries are subject to change.

# The Small Cruise Ship Collection

www.small-cruise-ships.com

small-cruise-ships.com

info@small-cruise-ships.com

## YOUR SHIP: ROALD AMUNDSEN

**YOUR SHIP:** Roald Amundsen

**VESSEL TYPE:**

**LENGTH:**

**PASSENGER CAPACITY:**

**BUILT/REFURBISHED:**

Launched in 2019, The state of the art vessel features new and environmentally sustainable hybrid technology that will reduce fuel consumption and show the world that hybrid propulsion on large ships is possible. MS Roald Amundsen is the first of two hybrid ships to be launched cutting emissions by sailing with electrical propulsion. Hybrid technology, combined with the advanced construction of the hull and effective use of electricity on board will reduce fuel consumption and CO2-emissions on the ships by 20 percent. The future of shipping will be silent and emission free. MS Roald Amundsen will lead the way towards an even more sustainable way of traveling. Sailing on electrical power is not only a great benefit for the environment, but it will also enhance the impact of experiencing nature for the guests. The ship will be specially constructed for voyages in polar waters and serve as a comfortable basecamp at sea - bringing adventurers from all over the world to the most spectacular destinations in the most sustainable way. These ships combine state-of-the-art technology together with a premium onboard experience. All cabins are outside, half have private balconies, and aft suites even boast private outdoor Jacuzzis, to soak up the stunning scenery in style. Facilities on board One of the

most eye-catching exterior design features of the ships will be the two-level indoor/outdoor Observation Deck wrapped around the top of the ships' raked bow. In a vast area behind it, you'll find the core of the onboard experience: Amundsen Science Center. Packed with state of the art technology and high tech gadgets such as touch screens and science equipment, the immersive edutainment area will be the place guests and staff/crew meet, mingle and create a deeper understanding for the areas they explore. The flexible venue will feature lecture spaces, a small library, and speciality areas for workshops in photography, biology, and more. The stunning scenery will be reflected in a rich and comfortable interior design. Scandinavian materials from nature, such as granite, oak, birch and wool will be used to create relaxed and stylish cabins and public areas. All cabins are outside, 50 % will have private balconies, aft suites will feature private outdoor Jacuzzis with



spectacular views.

The Small Cruise Ship Collection  
www.small-cruise-ships.com

01432 507 280 (within UK)

info@small-cruise-ships.com | small-cruise-ships.com

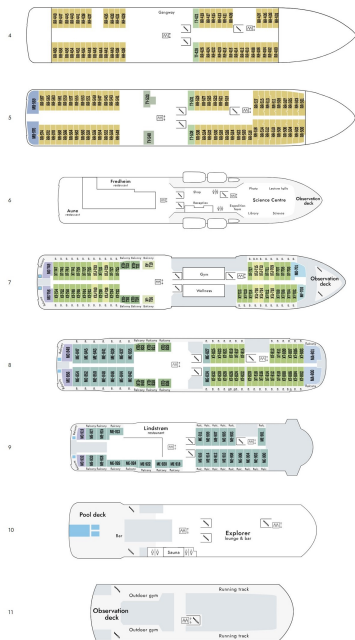
# The Small Cruise Ship Collection

www.small-cruise-ships.com

small-cruise-ships.com

info@small-cruise-ships.com

## INSIDE YOUR SHIP



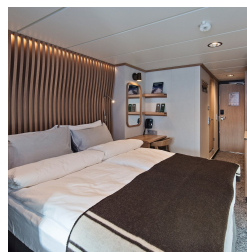
Arctic Superior. From



Expedition Suite. From



Polar Outside. From





# The Small Cruise Ship Collection

[www.small-cruise-ships.com](http://www.small-cruise-ships.com)



[small-cruise-ships.com](http://small-cruise-ships.com)

[info@small-cruise-ships.com](mailto:info@small-cruise-ships.com)

## PRICING

10-Mar-2025 to 03-Apr-2025

Expedition Suite. From **£13077 GBP pp**

Arctic Superior. From **£10420 GBP pp**

Polar Outside. From **£9478 GBP pp**



**01432 507 280** (within UK)

[info@small-cruise-ships.com](mailto:info@small-cruise-ships.com) | [small-cruise-ships.com](http://small-cruise-ships.com)