

## The Small Cruise Ship Collection

www.small-cruise-ships.com

small-cruise-ships.com

info@small-cruise-ships.com

### ARCTIC ODYSSEY: ICELAND, GREENLAND, AND CANADA EXPEDITION

Sail in the wake of early Viking explorers on a compelling journey that mixes Arctic wildlife and landscapes with a riveting history that comes alive in well-preserved ruins and local communities continuing to thrive on the edge of the Arctic. Start your adventure in Iceland's remote Westfjords before charting a course for southern Greenland, where you'll glide into dramatic fjords flanked by towering, jagged mountains; and visit colorful Qaqortoq, the unofficial capital of the region. In Canada, trace wild coastlines, keeping an eye out for polar bears, whales, and migrating birdlife.



#### ITINERARY

DAY 1 Reykjavik, Iceland / Embark Ship

Arrive in Reykjavik, the world's northernmost capital, which lies just below the Arctic Circle. Transfer from the airport and visit the Old Town, including Hallgrímskirkja Cathedral with its 210-foot tower, before embarking the ship in the afternoon.

Meals Included: Lunch, Dinner

The Small Cruise Ship Collection

www.small-cruise-ships.com

01432 507 280 (within UK)

info@small-cruise-ships.com | small-cruise-ships.com



## The Small Cruise Ship Collection

[www.small-cruise-ships.com](http://www.small-cruise-ships.com)

[small-cruise-ships.com](http://small-cruise-ships.com)

[info@small-cruise-ships.com](mailto:info@small-cruise-ships.com)

### DAY 2 Flatey Island

Explore Iceland's western frontier, visiting Flatey Island, a trading post for many centuries, turned sleepy summer islet. Walk around the charming little hamlet that has survived, and hike across trails that trace the cliffs past a seasonal puffin population.

Meals Included: Breakfast, Lunch, Dinner

### DAY 3 Crossing the Denmark Strait

Sail away from the Westfjords of Iceland and across the Denmark Strait. Connecting the Arctic and Atlantic Oceans, the strait is home to the world's largest waterfall, caused by powerful currents underneath the surface. Listen to talks by our experts, relax with a book in the lounge or on the observation deck, and keep an eye out for wildlife as we sail across the continental shelf.

Meals Included: Breakfast, Lunch, Dinner

### DAY 4 Prins Christian Sund, Greenland

Sail into Prins Christian Sund, which cuts into the southern tip of Greenland and allows our ship to pass through the sheltered waters of this dramatic polar landscape. Marvel at soaring

pinnacles and glimpse hanging glaciers through the fjords that stretch back to the Greenlandic ice sheet. Along the way, keep an eye out for marine and birdlife.

Meals Included: Breakfast, Lunch, Dinner

### DAYS 5-6 Southern Greenland Fjords

Home to some of the best-preserved ruins of the Viking era in Greenland, the town of Qaqortoq and the Tunulliarfik Fjord provide us with two days of insight, culture, and local interactions. Visit the working farms of a UNESCO World Heritage site and learn about how they're carrying on the centuries-old tradition of Arctic sheep farming at the edge of Greenland's ice cap. Walk through the ruins of Bratthlid, Erik the Red's farm, visiting replicas of the church and the family's longhouse. We'll also explore the same shores from which their son, Leif Eriksson, launched the first voyages to North America--500 years before Columbus.

Visit the unofficial capital of southern Greenland at Qaqortoq, with just over 3,200 residents. The colonial influence is visible throughout the town, home to houses painted in primary colors and architecture dating back to the 1700s. Stroll through the town square and visit the museum, where Greenlandic kayaks, hunting equipment, and local art and handicrafts are on display. Finally, walk through the walls of Hvalsey church, its Norse ruins located in the fjords behind Qaqortoq.

Meals Included: Breakfast, Lunch, Dinner

The Small Cruise Ship Collection

[www.small-cruise-ships.com](http://www.small-cruise-ships.com)

01432 507 280 (within UK)

[info@small-cruise-ships.com](mailto:info@small-cruise-ships.com) | [small-cruise-ships.com](http://small-cruise-ships.com)





The Small Cruise  
Ship Collection

[www.small-cruise-ships.com](http://www.small-cruise-ships.com)

[small-cruise-ships.com](http://small-cruise-ships.com)

[info@small-cruise-ships.com](mailto:info@small-cruise-ships.com)

**DAYS 7-8 At Sea / Crossing the Davis Strait**

Spend time on the bow of the ship watching for whales, polar bears, and other wildlife; enjoy the ship's amenities; edit your photos alongside our professional photographers; and attend expert-led talks about the Arctic as we navigate the massive icebergs of Davis Strait on the way to Baffin Island.

Meals Included: Breakfast, Lunch, Dinner

**DAYS 9-12 Exploring the Labrador Coast, Canada**

Spend three days tracing the beautiful, wild coast of Labrador, exploring on foot and by kayak and Zodiac. Weaving our way through the Lower Savage islands, keeping a watchful eye for the polar bears that call these islands home, we will use our Zodiacs as safe havens to experience their environment firsthand. Watch for peregrine falcons and other birds soaring over the rocky shorelines of the spectacularly narrow Mugford Tickle and take in the impressive sight of the 4,000-foot-high Kaumajet Mountains. Continue to scenic Battle Harbour to discover the reconstructed 19th-century buildings and legacy of this historic fishing village.

Meals Included: Breakfast, Lunch, Dinner

**DAY 13 L'Anse aux Meadows**

In the 1960s, the remains of a Viking village established in the 11th century were excavated at L'Anse aux Meadows, now a UNESCO World Heritage site. Walk among the Norse ruins and reconstructed sod huts and learn the saga of the Vikings in North America, who arrived here nearly 500 years before the explorations of Columbus.

Meals Included: Breakfast, Lunch, Dinner

**DAY 14 Northern Newfoundland**

Cliffs, fjords, and beaches grace the northwestern tip of Newfoundland. Hike, kayak, or explore by Zodiac with our experts amid this stunning scenery and keep an eye out for migrating birds and whales.

Meals Included: Breakfast, Lunch, Dinner

**DAY 15 St. John's, Newfoundland / Disembark Ship**

Today, disembark in St. John's and transfer to the airport for your flight home.

Meals Included: Breakfast, Lunch, Dinner

Please note:

The Small Cruise  
Ship Collection

[www.small-cruise-ships.com](http://www.small-cruise-ships.com)

**01432 507 280** (within UK)

[info@small-cruise-ships.com](mailto:info@small-cruise-ships.com) | [small-cruise-ships.com](http://small-cruise-ships.com)



# The Small Cruise Ship Collection

[www.small-cruise-ships.com](http://www.small-cruise-ships.com)



[small-cruise-ships.com](http://small-cruise-ships.com)

[info@small-cruise-ships.com](mailto:info@small-cruise-ships.com)

Itineraries are subject to change.



The Small Cruise Ship Collection

[www.small-cruise-ships.com](http://www.small-cruise-ships.com)

**01432 507 280** (within UK)

[info@small-cruise-ships.com](mailto:info@small-cruise-ships.com) | [small-cruise-ships.com](http://small-cruise-ships.com)



# The Small Cruise Ship Collection

www.small-cruise-ships.com

small-cruise-ships.com

info@small-cruise-ships.com

## YOUR SHIP: NATIONAL GEOGRAPHIC EXPLORER

<b>YOUR SHIP:</b>	<b>National Geographic Explorer</b>
<b>VESSEL TYPE:</b>	<b>Luxury Expedition</b>
<b>LENGTH:</b>	<b>108 meters</b>
<b>PASSENGER CAPACITY:</b>	<b>148 (single &amp; twin cabins)</b>
<b>BUILT/REFURBISHED:</b>	<b>1982 / 2008</b>

National Geographic Explorer is a state-of-the-art expedition ship. It is a fully stabilized, ice-class vessel, enabling it to navigate polar passages while providing exceptional comfort. It carries kayaks and a fleet of Zodiac landing craft. An Undersea Specialist operates a remotely operated vehicle (ROV) and sophisticated video equipment, extending access to the underwater world. Public areas : Bistro Bar; Chart Room; Restaurant; Global Gallery; Library, Lounge with full service bar and state-of-the-art facilities for films, slideshows and presentations; Mud Room with lockers for expedition gear, and Observation Lounge. Our "Open Bridge" provides guests an opportunity to meet our Officers and Captain and learn about navigation. Meals : Served in single seatings with unassigned tables for an informal atmosphere and easy mingling. Menu is international with local flair. Cabins : All cabins face outside with windows or portholes, private facilities and climate controls. Expedition Equipment : Zodiac landing craft, kayaks, Remotely Operated Vehicle (ROV), hydrophone, SplashCam, underwater video camera, Crow's Nest remote controlled camera, video microscope, snorkeling gear. Special Features : A full-time doctor, Undersea Specialist, LEX Photo Specialist and Video

Chronicle, Internet Cafe and laundry. Wellness : The vessel is staffed by two Wellness Specialists and features a glass enclosed Fitness Center, outdoor stretching area, two LEXspa treatment rooms



and Sauna.

The Small Cruise Ship Collection

www.small-cruise-ships.com

01432 507 280 (within UK)

info@small-cruise-ships.com | small-cruise-ships.com

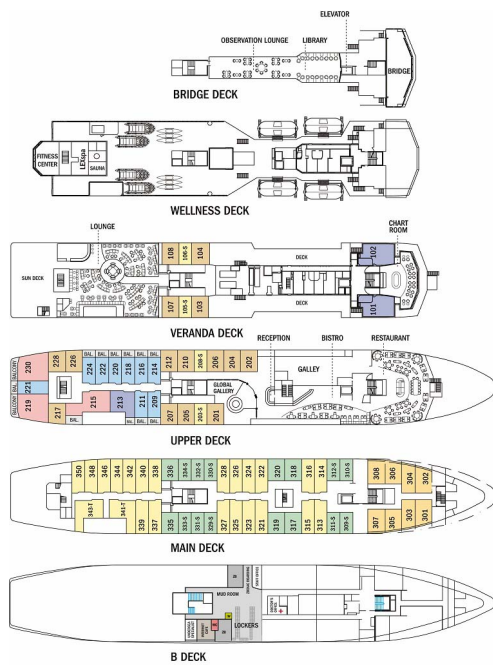
# The Small Cruise Ship Collection

www.small-cruise-ships.com

small-cruise-ships.com

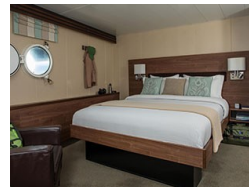
info@small-cruise-ships.com

## INSIDE YOUR SHIP



Category 1

Category 1. From



Category 2

Category 3



Category 4

Category 5

Category 6

Category 7

Category SA (solo)

Category SB (solo)





# The Small Cruise Ship Collection

[www.small-cruise-ships.com](http://www.small-cruise-ships.com)



[small-cruise-ships.com](http://small-cruise-ships.com)

[info@small-cruise-ships.com](mailto:info@small-cruise-ships.com)

## PRICING

### 17-Aug-2025 to 31-Aug-2025

Category 4	£16289 GBP pp
Category SA (solo)	£18247 GBP pp
Category SB (solo)	£19043 GBP pp
Category 6	£22236 GBP pp
Category 1	£13530 GBP pp
Category 3	£15279 GBP pp
Category 2	£14677 GBP pp
Category 7	£26142 GBP pp
Category 5	£19431 GBP pp

### 09-Aug-2026 to 23-Aug-2026

Category 1. From	£20695 GBP pp
------------------	---------------



The Small Cruise Ship Collection

[www.small-cruise-ships.com](http://www.small-cruise-ships.com)

01432 507 280 (within UK)

[info@small-cruise-ships.com](mailto:info@small-cruise-ships.com) | [small-cruise-ships.com](http://small-cruise-ships.com)