

The Small Cruise Ship Collection

www.small-cruise-ships.com

small-cruise-ships.com

info@small-cruise-ships.com

ATLANTIC ODYSSEY FROM THE IBERIAN PENINSULA TO THE CANARY ISLANDS

From Malaga and the Moroccan coast, to the volcanic archipelagos of the Canaries and Madeira, PONANT invites you on an unforgettable 9-day interlude, between Malaga and Santa Cruz de Tenerife. This journey aboard Le Laperouse will take you into the heart of uniquely and wildly beautiful landscapes, featuring majestic volcanos, lush green valleys, isolated inlets, verdant cliffs and historic cities with multiple sources of heritage. Throughout your journey, you will benefit from an excursion included per person per port of call, to choose from a selection offered by PONANT. During this cruise, admire the green volcanic landscapes of Santa Cruz de La Palma, stroll along the levadas (canals dug by hand into the mountains in the 19th century) in Funchal, or visit the famous Mount Teide and its crater, the highest mountain in Spain, from Los Cristianos. The diversity of experiences on offer promises you intense and varied moments (to discover the full range of excursions, go to the itinerary tab). From Malaga on the Spanish coast, head for Tangier, where you'll be able to visit the American Legation, the oldest U.S. diplomatic mission in the world, and you may travel across the Rif Mountains to the showcase of Moroccan handicrafts at the UNESCO World Heritage Site of Tetouan. You will then drop anchor in Casablanca, "the white city", which combines tradition and modernity. Here you'll discover the impressive Hassan II Mosque, considered one of the world's greatest religious buildings. Your ship will then set a course northward to carry you to Madeira, a paradise for hiking enthusiasts. On this steep island covered in luxuriant vegetation, the variety of landscapes, including sheer cliffs, levadas (Madeiran aqueducts), banana plantations, and the laurel forest

- Laurisilva - listed as a UNESCO World Heritage Site, never ceases to amaze visitors. Le Laperouse then heads for the mythical Canary Islands, where Santa Cruz de La Palma will invite you to spend a moment suspended in time. Here, the accent is on authenticity and tranquillity as you succumb to the charms of its unspoilt nature and its unusual architectural heritage featuring traditional Canarian houses with brightly-coloured wooden balconies, sumptuous palaces, and religious buildings. Then join the vibrant seaside town of Los Cristianos. Succumb to the charms of its atmosphere unlike any other, its mythical Mount Teide, the highest mountain in Spain, and its long stretches of fine sand lapped by the turquoise waters of the Atlantic. Finally, you will visit Santa Cruz de Tenerife, the final port of call on your



The Small Cruise Ship Collection
www.small-cruise-ships.com

01432 507 280 (within UK)

info@small-cruise-ships.com | small-cruise-ships.com



The Small Cruise Ship Collection

www.small-cruise-ships.com

small-cruise-ships.com

info@small-cruise-ships.com

Canarian cruise.

ITINERARY

Day 1 Málaga

A historical and festive town, Malaga is located in Andalusia, on the Costa del Sol. Between the marina and the beaches, the seaside promenade of La Farola offers an ideal setting for strolling and relaxing. Set slightly further back, the Malagueta bullring is one of the emblematic sites of the city. From the hill overlooking the old town, one can see Gibralfaro castle and the Alcazaba, two fortified ensembles rising out from the cypresses and maritime pines. To visit Pablo Picasso's birthplace, you will go first to the courtly plaza de la Merced. A few streets back from here, you can explore the museum dedicated to the artist, in the Buenavista palace.

Day 2 Tangier

Nestling in the Bay of Tangier, this bewitching Moroccan city lies at the northwestern tip of the country, along the famous Strait of Gibraltar. Following in the footsteps of the writers and artists inspired and seduced by the city's climate and setting, you'll love its rich landscapes and multicultural charm. You'll instantly understand as soon as you set foot in the heart of the Medina. An architectural masterpiece, the Kasbah is your gateway to the Sultan's Palace and its gardens. If you prefer beaches to museums, you can relax just a few minutes from the city on the beautiful sweep of sand bathed by the Atlantic Ocean.

Day 3 Casablanca

Situated along the Atlantic coast, Casablanca is the very image of contemporary Morocco: Westernised and cosmopolitan. Exploring the architectural heritage of the "White City" tells you all you need to know about its cultural and historical diversity. Breathtaking highlights include the majestic Hassan II Mosque, considered to be one of the greatest religious buildings in the world. You can explore the narrow alleys of the old Medina, which stand in sharp contrast to the surrounding modern architecture. To get the most from the seafront, the Ain Diab Corniche provides a pleasant place for strolling with easy access to the beach.

Day 4 At sea

During your journey at sea, make the most of the many services and activities on board. Treat yourself to a moment of relaxation in the spa or stay in shape in the fitness centre. Depending on the season, let yourself be tempted by the swimming pool or a spot of sunbathing. This journey without a port of call will also be an opportunity to enjoy the conferences or shows proposed on board, depending on the activities offered, or to do some shopping in the boutique or to meet the PONANT photographers in their dedicated space. As for lovers of the open sea, they will be able to visit the ship's upper deck to admire the spectacle of the waves and perhaps be lucky enough to observe marine species. A truly enchanted interlude, combining comfort, rest and entertainment.

Days 5 - 6 Funchal, Madeira

The Small Cruise Ship Collection
www.small-cruise-ships.com

01432 507 280 (within UK)

info@small-cruise-ships.com | small-cruise-ships.com



The Small Cruise Ship Collection

www.small-cruise-ships.com

small-cruise-ships.com

info@small-cruise-ships.com

This attractive capital of Madeira is located on the southern coast of the island. The walkways of the old town are lined with azulejos, or multi-coloured mosaics. If you follow these patterns, they'll lead you to the appetising Mercado dos Lavradores market stands, the Frederico de Freitas museum, and the golden panelling of the Cathedral de la Se. Along the waterfront, the palm tree-shaded promenade leads you to the teleféricos de Monte, Madeira's cable cars. Its panoramic cabins transport you over the city to top of Monte, where you can see the picturesque botanical garden.

Day 7 Santa Cruz de La Palma, Canary Islands

The capital of the island of Palma, Santa Cruz de la Palma is the pearl of the Canaries. Founded in 1493 by the conquistador Alonso Fernandez de Lugo, the city has preserved a large and atypical architectural heritage from its colonial past, with its traditional Canarian houses adorned with brightly coloured wooden balconies, its cobbled streets, its sumptuous palaces and its numerous religious buildings. The Santa Catalina Castle is the symbol of the city. This 16th century military fortification helped defend the city from repeated attacks by French privateers.

Day 8 Los Cristianos, Canary Islands

Discover the charming village of Los Cristianos, in the south of the island of Tenerife. While the former fishing town is edged by some beautiful fine-sand beaches, it is also known for the two

protected nature reserves that surround it - Mount Chayofita and Mount Guaza. Both are ideal for hiking and for admiring the captivating views, facing the North Atlantic. Authentic and festive, Los Cristianos is also famous for its many water-based activities, ranging from scuba diving to snorkelling and water sports.

Day 9 Santa Cruz de Tenerife, Canary Islands

The capital city of Tenerife is located on the north-east coast of the island. Close to the port is the monumental Plaza de España, bedecked with a fountain and plant sculptures. Around the plaza, you can admire the white marble Triunfo de la Candelaria obelisk, the historic casino of Santa Cruz and the majestic Guimera theatre. Not far from here, the picturesque Iglesia de la Concepcion church features the characteristic traits of Canaries architecture.

Please note:

Itineraries are subject to change.

The Small Cruise Ship Collection
www.small-cruise-ships.com

01432 507 280 (within UK)

info@small-cruise-ships.com | small-cruise-ships.com



The Small Cruise Ship Collection

www.small-cruise-ships.com

small-cruise-ships.com

info@small-cruise-ships.com

YOUR SHIP: LE BOUGAINVILLE

YOUR SHIP: Le Bougainville

VESSEL TYPE:

LENGTH:

PASSENGER CAPACITY:

BUILT/REFURBISHED:

Featuring innovative and environmentally-friendly equipment, elegantly designed cabins, spacious suites with large windows, and lounge areas that open onto the outside, this new limited-capacity yacht boasting just 92 cabins and suites will offer you a truly unique cruising experience. As the first ship in a new series that remains true to the Ponant spirit, Le Bougainville will embody the unique atmosphere that is the cruise line's hallmark: a subtle blend of refinement, intimacy and comfort. Aboard this ship that flies the French flag, you will experience the incomparable pleasure of an intimate cruise, with the possibility of exploring an ever-increasing range of destinations in an ethnic-chic ambiance with luxury service. Experience a luxurious setting where the accent is on authenticity and passion for travel. **RESTAURANTS** As it is an essential part of French culture, gastronomy will naturally have pride of place aboard this new ship. Through its two restaurants, Le Bougainville will invite you on a journey to elegance and epicureanism. In a relaxed atmosphere, a first dining area located on Deck 3 and able to seat 70 will serve grilled meats daily, along with a variety of salads and desserts. To the back of Deck 4, you will find a 260 m² panoramic restaurant which can accommodate all of

our passengers in a single sitting. Designed differently to that on our other ships, this dining area, which opens onto the outside, will have a buffet of salads, desserts and cheeses at your disposal. Our discreet and attentive crew will provide table service for hot meals. **PUBLIC AREAS** Like Le Boreal and its sisterships, Le Bougainville has many common areas that are designed and equipped to meet all of your needs while preserving the intimacy of each passenger. A 140 m² reception area includes: A reception/concierge desk, An excursions desk, The ship's administrative services, The sales office, manned by our Guest Relations Officer, Our 50 m² boutique which sells clothing, jewellery, beauty products, postcards and various accessories, Toilets accessible to passengers with reduced mobility. A new hydraulic platform with adjustable height provides: Easier boarding than on any other cruise ship, Easier Zodiac embarkation and disembarkation for expeditions, Easier access to the sea for swimming and practising various water sports such as kayaking or paddle-boarding. A pool deck offering: A pool with a panoramic view, equipped with a counter-current swimming system, A pleasant solarium, An outdoor bar and lounge with armchairs and sofas. A 200 m² main lounge which can accommodate all of our passengers to share convivial moments and to host activities organised during the day or evening. Lastly, a theatre that seats 188, equipped with: The latest sound and lighting technology, A LED wall as the stage backdrop, for the projection of high-resolution images and videos. Please click the following links to read more about Ponant and the other Ponant

The Small Cruise
Ship Collection
www.small-cruise-ships.com

01432 507 280 (within UK)

info@small-cruise-ships.com | small-cruise-ships.com



The Small Cruise Ship Collection

www.small-cruise-ships.com

small-cruise-ships.com info@small-cruise-ships.com



cruise ships.

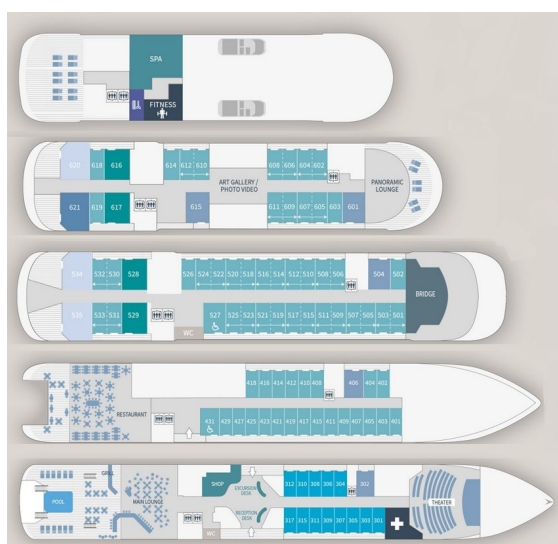
The Small Cruise Ship Collection

www.small-cruise-ships.com

small-cruise-ships.com

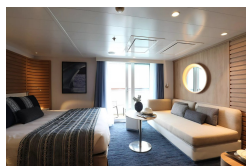
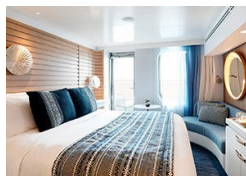
info@small-cruise-ships.com

INSIDE YOUR SHIP

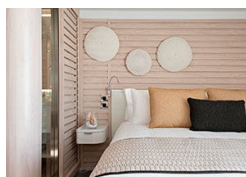
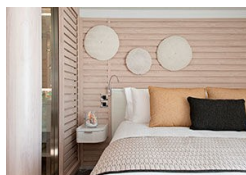


- Owner's Suite Deck 6
- Privilege Suites Deck 5-6
- Grand Deluxe Suites Deck 5-6
- Prestige Suites Deck 5-6
- Deluxe Suites Deck 5-6
- Prestige Cabins Deck 4-5-6
- Deluxe Cabins Deck 3

Deluxe Stateroom



Deluxe Suite Deck 3



Deluxe Suite

Deluxe Suite Deck 4

Deluxe Suite Deck 5

Grand Deluxe Suite

Grand Deluxe Suite Deck 6

Prestige Deck 4

Prestige Deck 5 Suite

Prestige Deck 6 Suite

Prestige Stateroom Deck 5

Deluxe Suite Deck 6

Grand Deluxe Suite Deck 5

Owner's Suite

Prestige Deck 5

Prestige Deck 6

Prestige Stateroom Deck 4

Prestige Stateroom Deck 6

The Small Cruise Ship Collection
www.small-cruise-ships.com

01432 507 280 (within UK)

info@small-cruise-ships.com | small-cruise-ships.com



small-cruise-ships.com

info@small-cruise-ships.com

Prestige Suite Deck 5

Prestige Suite Deck 6

Privilege Suite

Privilege Suite Deck 5



The Small Cruise Ship Collection

www.small-cruise-ships.com

small-cruise-ships.com

info@small-cruise-ships.com

PRICING

17-Nov-2025 to 25-Nov-2025

| | |
|---------------------------|--------------|
| Deluxe Suite Deck 6 | £5419 GBP pp |
| Prestige Deck 5 Suite | £5829 GBP pp |
| Grand Deluxe Suite Deck 6 | £6355 GBP pp |
| Deluxe Suite Deck 3 | £5419 GBP pp |
| Deluxe Stateroom | £3585 GBP pp |
| Privilege Suite Deck 6 | £6169 GBP pp |
| Deluxe Suite Deck 5 | £5419 GBP pp |
| Prestige Deck 4 | £3769 GBP pp |
| Deluxe Suite Deck 4 | £5419 GBP pp |
| Privilege Suite Deck 5 | £6169 GBP pp |
| Prestige Deck 6 | £4035 GBP pp |
| Prestige Deck 5 | £3895 GBP pp |
| Prestige Deck 6 Suite | £6019 GBP pp |
| Grand Deluxe Suite Deck 5 | £6355 GBP pp |

21-Dec-2025 to 29-Dec-2025

| | |
|---------------------------|--------------|
| Prestige Stateroom Deck 6 | £4969 GBP pp |
| Deluxe Suite | £6699 GBP pp |
| Privilege Suite | £7635 GBP pp |
| Deluxe Stateroom | £4415 GBP pp |
| Prestige Suite Deck 5 | £7215 GBP pp |
| Prestige Stateroom Deck 5 | £4789 GBP pp |
| Owner's Suite | £8105 GBP pp |
| Prestige Stateroom Deck 4 | £4645 GBP pp |
| Grand Deluxe Suite | £7865 GBP pp |
| Prestige Suite Deck 6 | £7455 GBP pp |

ADDITIONAL CHARGES:

Port Taxes 590 AUD pp