



**The Small Cruise Ship Collection**  
[www.small-cruise-ships.com](http://www.small-cruise-ships.com)

[small-cruise-ships.com](http://small-cruise-ships.com)      [info@small-cruise-ships.com](mailto:info@small-cruise-ships.com)

## BAFFIN ISLAND AND GREENLAND: CIRCLING THE MIDNIGHT SUN - 12 DAY ADVENTURE CRUISE

Embark on an extraordinary journey through Inuit Nunangat, a land of ice, water, and rich culture. This immersive expedition allows you to delve into the dynamic world of the Inuit people, where language, arts, cuisine, music, and traditions are seamlessly integrated into your voyage. As honored guests in the Inuit homeland, you'll gain unique insights into the profound connection between Inuit and the land. Engage with Inuit artists, cultural educators, academics, and more who generously share their knowledge and expertise. Experience the thrill of spotting polar bears, whales, and seabirds in the pristine Arctic environments of Greenland and Baffin Island. Visit the artistic hub of Panniqtuuq and immerse yourself in the mesmerizing landscapes of the Cumberland Peninsula, Southeast Baffin Island, and Ilulissat Icefjord. Hike, Zodiac cruise, and explore, while expert guides provide in-depth insights into the local flora, fauna, archaeological sites, and the rich Inuit culture that has thrived in this region for centuries. This expedition promises to be a once-in-a-lifetime adventure that combines natural beauty with cultural immersion.



### ITINERARY

Day 1: Iqaluit, NU, Canada - Begin Your Adventure

Begin your journey by transferring to the ship by Zodiac through Iqaluit harbour. Iqaluit, at the head of Frobisher Bay, is Nunavut's capital.



## The Small Cruise Ship Collection

[www.small-cruise-ships.com](http://www.small-cruise-ships.com)

[small-cruise-ships.com](http://small-cruise-ships.com)

[info@small-cruise-ships.com](mailto:info@small-cruise-ships.com)

### Day 4: Panniqtuuq (Pangnirtung) - Immerse yourself in Inuit art

A population of nearly 8,000 calls the city home. Local attractions include the territorial Legislature, igloo-inspired St. Jude's Cathedral, art shops, and more.

### Day 2: Kitigtung (Lady Franklin Island) - Marvel at Incredible Geology

Journey to Lady Franklin Island, one of the many rugged and wildlife-rich islands dotting the south Baffin Island coast. Explore the coastline by Zodiac keeping watch for seabirds, polar bears, and marine life.

A wonderful introduction to the geology of Nunavut, examine the rock formations from the sea. With Inuit expedition team members by your side, you'll gain an intimate perspective on the captivating wildlife and geological wonders that cross your path.

### Day 3: Southeast Baffin Island - Explore Southeast Baffin Island

Spend time on the nuna--the Inuktitut name for land. Take a hike that best suits your interest accompanied by our expert expedition team who offer insightful interpretations of the surroundings.

Soak in the full seasonal blooms at the height of Arctic summer as you explore the rolling tundra. A stop here will give you a unique opportunity to connect with nature on a profound level.

Experience Panniqtuuq, nestled on a coastal plain amidst stunning mountains and a winding river valley. Meaning "the place of the bull caribou" in Inuktitut, this charming community is embraced by snow-capped peaks and the ocean.

Immerse yourself in renowned Inuit art at the Uqqurmiut Inuit Arts Centre. Step inside the print and weave shop, where talented Inuit artists create beautifully woven tapestries and prints.

Get the opportunity to purchase the acclaimed "Pang" hats--colourfully patterned crocheted toques--at the centre's gift shop.

### Day 5-6: Cumberland Peninsula - Experience the Rugged Beauty of the Cumberland Peninsula

Spend two days exploring the Cumberland Peninsula, a stunning Arctic region steeped in cultural heritage.

Jutting from the southeastern coast of Baffin Island, this peninsula encompasses Cumberland Sound, whose profuse wildlife sustained Inuit and their predecessors for thousands of years. We hope to experience the same natural wonders as we sail through the marine-rich waterway.



## The Small Cruise Ship Collection

[www.small-cruise-ships.com](http://www.small-cruise-ships.com)

[small-cruise-ships.com](http://small-cruise-ships.com)

[info@small-cruise-ships.com](mailto:info@small-cruise-ships.com)

### Day 8-9: Western Greenland - Hike the Tundra

It was even considered a potential missing link in the early search for the Northwest Passage. While exploring, you'll have the opportunity to delve into the captivating maritime history of the region, gaining a deeper understanding of its past and present significance.

We'll make the most of every opportunity to hike the vast tundra and Zodiac in the ice-strewn waters. Make sure to keep an eye out for the abundant wildlife that calls this region home, including polar bears, Arctic foxes, and beluga whales.

### Day 7: At Sea – Davis Strait - Learn From Inuit in Their Homeland

Deepen your understanding of the environment, cultures, and history of the region as we sail across the Davis Strait towards Greenland. Get the privileged opportunity to engage with and learn from Inuit in their homeland.

Enjoy workshops and presentations, watch a documentary, and get out on deck! Try your hand at athletic feats during an interactive cultural performance of Inuit games.

Through shared experiences and interactions, develop a deep appreciation for the culture and gain a profound connection to the stunning landscapes we traverse.

Keep your binoculars ready to spot whales and seabirds who follow in our wake.

Welcome to Kalaallit Nunaat, or Greenland! Choose the activity you like best during an expedition landing on Greenland's spectacular west coast.

Whether you prefer hiking, walking, photography, or sitting contemplatively, you'll be delighted!

Alongside our team of knowledgeable naturalists, marine biologists, and geologists, embrace every opportunity to learn and deepen your connection to the landscapes we explore.

Admire the mighty mountains and the tiniest tundra flowers--a stop in this area will offer many outstanding features to pique your interest.

### Day 10: Ilulissat - Take a Cruise Around Towering Icebergs

Experience the remarkable beauty of Ilulissat Icefjord, renowned for its enormous icebergs. Ilulissat means "iceberg"--an apt name for this site at the outlet of the Sermeq Kujalleq glacier. It is a UNESCO World Heritage Site and the source of many of the icebergs in the North Atlantic.

Marvel at the sheer grandeur of the towering ice formations as you take a stroll along the boardwalk--truly a sight to behold!

The Small Cruise Ship Collection  
[www.small-cruise-ships.com](http://www.small-cruise-ships.com)

01432 507 280 (within UK)

[info@small-cruise-ships.com](mailto:info@small-cruise-ships.com) | [small-cruise-ships.com](http://small-cruise-ships.com)



Visit the town, with its museums, charming cafes, craft shops, and bustling fishing harbour. Be sure to make your way to the Ilulissat Icefjord Centre, where you can delve into the fascinating narratives surrounding the ice and gain a deeper appreciation for this awe-inspiring natural wonder.

Day 11: Sisimiut Coast - Witness Stunning Glaciers, Islands, and Fjords

Explore West Greenland's complex coastal waterways that include glaciers, islands, and fjords against a towering mountain backdrop, with plentiful opportunities for hiking and Zodiac cruising.

Learn about the Saqqaq, Dorset, Thule, and modern Inuit cultures that have called the Sisimiut region home for the past 4,500 years.

The waters are relatively warm here, due to the West Greenland Current and the subarctic location.

Day 12: Kangerlussuaq, Greenland - Wave a Fond Farewell

End your journey by sailing up Kangerlussuaq Fjord (Søndre Strømfjord), a 190-kilometre-long fjord surrounded by mountains and glaciers, and cross the Arctic Circle on your way.

Kangerlussuaq, the settlement at the head of the fjord, is a former US Air Force base.

We will disembark in the morning and transfer by Zodiac for our return charter flight to Toronto, ON.

Please Note:

Itineraries are subject to change.

# The Small Cruise Ship Collection

[www.small-cruise-ships.com](http://www.small-cruise-ships.com)



[small-cruise-ships.com](http://small-cruise-ships.com)

[info@small-cruise-ships.com](mailto:info@small-cruise-ships.com)

## YOUR SHIP: OCEAN ENDEAVOUR

### YOUR SHIP:

**Ocean Endeavour**

### VESSEL TYPE:

### LENGTH:

### PASSENGER CAPACITY:

### BUILT/REFURBISHED:

Sailing with a maximum of 198-passengers, Ocean Endeavour is the perfect vessel for expedition cruising. Outfitted with twenty Zodiacs, advanced navigation equipment, multiple lounges and a top deck observation room, she is purpose-built for passenger experiences in remote environments. The Ocean Endeavour boasts a 1B ice class, enabling her to freely explore throughout the Arctic summer. Launched in 1982, she has had numerous upgrades, most recently in 2010 and 2014. At 137 meters (450ft) in length, Ocean Endeavour has plenty of interior and exterior space. Enjoy multiple decks offering comfortable lounge chairs, outdoor dining, a swimming pool, sauna and even a hot tub! The spacious interiors allow for multiple workshops and presentations to occur simultaneously. Community is at the heart of Adventure Canada's expedition experience. We gather together to learn, enjoy a drink, sing a song or share a yarn - connecting with one and other. The three lounges aboard Ocean Endeavour are fantastic public spaces for seminars, events and dialogue. The Ocean Endeavour's private spaces are stylish and comfortable. All cabins have private washroom facilities, a phone for internal calls, radio, TV and air-conditioning. There are a variety of cabin categories available ranging from 9-30 m2

(100-320 sq ft). Ocean Endeavour's crew is experienced, and friendly. Her shallow draft and maneuverability allow her to access isolated fiords, bays and secluded communities. The stylish vessel is at home among the glorious settings we seek. Enjoy the class and comfort of a boutique hotel, while venturing to some of the world's last great frontiers aboard the Ocean



Endeavour!

The Small Cruise Ship Collection  
[www.small-cruise-ships.com](http://www.small-cruise-ships.com)

01432 507 280 (within UK)

[info@small-cruise-ships.com](mailto:info@small-cruise-ships.com) | [small-cruise-ships.com](http://small-cruise-ships.com)

# The Small Cruise Ship Collection

www.small-cruise-ships.com

small-cruise-ships.com

info@small-cruise-ships.com

## INSIDE YOUR SHIP

### CABIN CATEGORIES

**CATEGORY 10 | SUITE**  
Deck seven forward-facing picture windows, unobstructed view; matrimonial bed, private bath with full tub, refrigerator – approx. 310 sq. ft.

**CATEGORY 9 | JUNIOR SUITE**  
Deck five (picture windows, unobstructed view; matrimonial bed, sitting area – approx. 270 sq. ft.), deck seven forward-facing picture windows, unobstructed; matrimonial bed, private bath with full tub, sitting area – approx. 290 sq. ft.) private bath, refrigerator

**CATEGORY 8 | SUPERIOR TWIN**  
Deck five (two picture windows, unobstructed view; two lower berths, sitting area – approx. 270 sq. ft.), deck seven forward-facing picture windows, unobstructed; matrimonial bed, private bath with full tub – approx. 180 sq. ft.), deck seven midship (picture windows, partial obstruction; matrimonial bed – approx. 190 sq. ft.) private bath, refrigerator

**CATEGORY 7 | SELECT TWIN**  
Deck five (picture windows, unobstructed view, two lower berths OR matrimonial bed, approx. 190 sq. ft.) and deck eight (overview windows, partial obstruction; matrimonial bed – approx. 140 sq. ft.) private bath, refrigerator

**CATEGORY 6 | COMFORT TWIN**  
Deck four (two porthole windows, unobstructed view; two lower berths OR matrimonial bed – approx. 175 sq. ft.), deck seven (picture window, partial obstruction; two lower berths – approx. 135 sq. ft.) and deck eight (picture windows, unobstructed view; matrimonial bed – approx. 160 sq. ft.) private bath, refrigerator

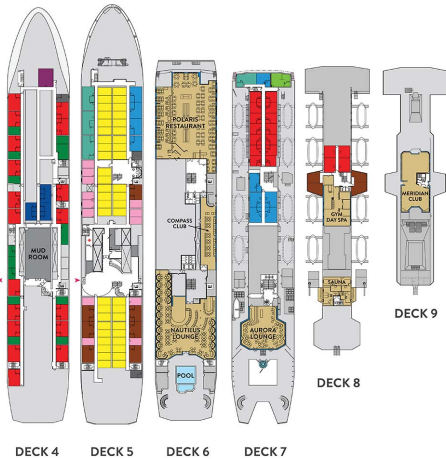
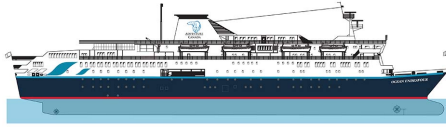
**CATEGORY 5 | MAIN TWIN**  
Deck five (picture window, unobstructed view; two lower berths, private bath – approx. 115 sq. ft.)

**CATEGORY 4 | EXTERIOR TWIN**  
Deck four (porthole window, unobstructed view; two lower berths, private bath – approx. 100 sq. ft. (Twin) / 90 sq. ft. (Single))

**CATEGORY 3 | INTERIOR TWIN**  
Deck five (interior cabin, two lower berths, private bath – approx. 125 sq. ft. (Twin) / 110 sq. ft. (Single))

**CATEGORY 2 | TRIPLE**  
Deck four (interior cabin, three lower berths, two private baths – approx. 200 sq. ft.)

**CATEGORY 1 | QUAD**  
Deck four (interior cabin, four lower berths, private bath (separate shower room and powder room) – approx. 240 sq. ft.)



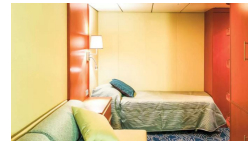
Cabin Category 1



Cabin Category 10



Cabin Category 2



Cabin Category 3



Cabin Category 4

Cabin Category 6

Cabin Category 8

Cabin Category 5

Cabin Category 7

Cabin Category 9

The Small Cruise Ship Collection

www.small-cruise-ships.com

01432 507 280 (within UK)

info@small-cruise-ships.com | small-cruise-ships.com



# The Small Cruise Ship Collection

[www.small-cruise-ships.com](http://www.small-cruise-ships.com)



[small-cruise-ships.com](http://small-cruise-ships.com)

[info@small-cruise-ships.com](mailto:info@small-cruise-ships.com)

## PRICING

05-Aug-2025 to 16-Aug-2025

Cabin Category 10	£11392 GBP pp
Cabin Category 8	£9852 GBP pp
Cabin Category 7	£9467 GBP pp
Cabin Category 6	£8851 GBP pp
Cabin Category 2	£5771 GBP pp
Cabin Category 1	£5001 GBP pp
Cabin Category 9	£10622 GBP pp
Cabin Category 3	£6772 GBP pp
Cabin Category 5	£8312 GBP pp
Cabin Category 4	£7773 GBP pp



The Small Cruise Ship Collection

[www.small-cruise-ships.com](http://www.small-cruise-ships.com)

01432 507 280 (within UK)

[info@small-cruise-ships.com](mailto:info@small-cruise-ships.com) | [small-cruise-ships.com](http://small-cruise-ships.com)