



The Small Cruise  
Ship Collection

[www.small-cruise-ships.com](http://www.small-cruise-ships.com)

[small-cruise-ships.com](http://small-cruise-ships.com)

[info@small-cruise-ships.com](mailto:info@small-cruise-ships.com)

## BEST OF CHILEAN PATAGONIA: FROM TORRES DEL PAINE TO CAPE HORN

Optimize your Patagonia experience with a land and sea expedition. Savor the grandeur of Torres del Paine's sunrises and sunsets, its iconic landscapes, and its profusion of wildlife during a three-day stay at the Tierra Patagonia Hotel & Spa and the outstanding Explora Patagonia Hotel Salto Chico. Then explore the fjords, glaciers, and panoramic vistas of Patagonia's coast and waterways, which are only accessible by expedition ship. Venturing out on Zodiac forays, kayaking pristine fjords, or hiking virgin trails, you'll breathe the rarified air of a mythic region. Enjoy special access to Argentina's Isla de Los Estados (Staten Island)—a seldom-seen island covered in wind-sculpted flora with wildlife that includes South American fur seals and Magellanic penguins. Discover the vast parklands of Karukinka, and check viewing legendary Cape Horn off your life list as well.



### ITINERARY

#### DAY 1: Santiago, Chile

Arrive in Santiago, Chile. We check in to the centrally located Mandarin Oriental Hotel and have the morning to relax. Santiago is nearly surrounded by the Andes, which form an inspiring backdrop to our afternoon guided overview of this vibrant city. We explore the Plaza de Armas, the main square, and nearby Presidential Palace, enjoying wonderful views from the many hills that dot the city.

#### DAY 2: Punta Arenas / Puerto Natales

Fly to Punta Arenas, then drive to Puerto Natales, one of Patagonia's southern gateways, and check into The Singular

The Small Cruise  
Ship Collection

[www.small-cruise-ships.com](http://www.small-cruise-ships.com)

01432 507 280 (within UK)

[info@small-cruise-ships.com](mailto:info@small-cruise-ships.com) | [small-cruise-ships.com](http://small-cruise-ships.com)



## The Small Cruise Ship Collection

[www.small-cruise-ships.com](http://www.small-cruise-ships.com)

[small-cruise-ships.com](http://small-cruise-ships.com)

[info@small-cruise-ships.com](mailto:info@small-cruise-ships.com)

Hotel Patagonia. Enjoy dinner at the hotel. (B,L,D)

### DAY 3-5: Torres del Paine National Park

Drive into this UNESCO Biosphere reserve and spend three days at Explora Patagonia Lodge or Tierra Patagonia Hotel, discovering one of the most wildlife-rich areas in the Americas, covering 450,000 acres of glaciers, forests, grasslands, rivers, and colorful lagoons. Choose among a variety of possibilities, including walks and hikes, horseback riding, sailing among icebergs to the foot of the immense Grey Glacier, visiting the Salto Grande waterfall, and seeing the towers of the central massif from the Blue Lagoon. Look out for guanacos, gray foxes, rheas and Andean condors. (B,L,D)

### DAY 6: Torres del Paine National Park / Puerto Natales / Embark

We have a final morning to explore Torres del Paine. We then drive to Puerto Natales, where we embark National Geographic Resolution. (B,L,D)

### DAY 7-8: Kirke Narrows & Exploring the Chilean Fjords

Be on deck to look for condors and other wildlife on our way out of Puerto Natales as our ship transits the narrow sliver of water known as the Kirke Narrows—only accessible to small ships like National Geographic Resolution and always a challenge to navigate because of the powerful currents that flow through its pinch point. Today and during the following days you'll be treated to the spectacular features of an active glaciated landscape with hanging valleys and tributary glaciers. This region was navigated by Ferdinand Magellan's expedition and it took most of November 1520 for his ships to find a way through the channels that lie between the continental mainland and Tierra del Fuego to the south. We'll look to make a first stop in the extensive maze of channels and islands of the Chilean

fjords, where we may go out by Zodiac and kayak. (B,L,D)

### DAY 9: Exploring Tierra Del Fuego / Karukinka Natural Park

Tierra del Fuego is one of Patagonia's crown jewels. We visit its newest and largest protected area: Karukinka Natural Park. Established in 2004 through a gift from Goldman Sachs, Karukinka is one of the largest donations ever made for conservation. We're thrilled to have special permission from the Wildlife Conservation Society to visit this private reserve, which spans 1,160 square miles and harbors endangered culpeo foxes, Andean condors, albatross, grebes, petrels, fulmars, shearwaters and many other kinds of wildlife. We may explore Jackson Bay, backed by a skyline of rugged mountains and look for wildlife including black-browed albatross that nest on one of the nearby small islands. We may walk a trail to a lovely waterfall and look for elephant seals resting on not only the beach but also high in the grass meadows and even in the small river draining the valley inland. (B,L,D)

### DAY 10: Exploring Fjords and the Beagle Channel

We'll explore more stunning wilderness as we see the fjords and glaciers of the region by Zodiac, kayak and on foot. A vast area of soaring, snowcapped mountains, gigantic glaciers, thousands of verdant islands, serene lakes, and waterfalls—the archipelago is scarcely touched by man. Take Zodiacs out to explore these protected waters and rugged shores, the blue and white of ice contrasting with greens of the forest highlighted by splashes of flowering plants. Look for the Andean condors, albatrosses, grebes, petrels, fulmars, shearwaters and many other birds that inhabit this otherworldly realm. Then we sail the Beagle Channel and will look to hike and kayak one of the wild areas in this region of beech forests, mountains and wild rivers. (B,L,D)



The Small Cruise Ship Collection

[www.small-cruise-ships.com](http://www.small-cruise-ships.com)

01432 507 280 (within UK)

[info@small-cruise-ships.com](mailto:info@small-cruise-ships.com) | [small-cruise-ships.com](http://small-cruise-ships.com)



## The Small Cruise Ship Collection

[www.small-cruise-ships.com](http://www.small-cruise-ships.com)



[small-cruise-ships.com](http://small-cruise-ships.com)

[info@small-cruise-ships.com](mailto:info@small-cruise-ships.com)

### DAY 11: Cape Horn

Today we visit Cape Horn, near the southernmost tip of the South American continent, named in 1616 for the Dutch town of Hoorn. These waters are famously difficult to navigate, and over the centuries have been the graveyard of many ships —which before the opening of the Panama Canal had to round the Cape to sail between the Pacific and Atlantic Oceans. Of course, we'll use our modern equipment to explore safely. Weather permitting, we'll take our Zodiacs ashore and walk to the top of the hill for panoramic views and to see the memorial placed there in 1992, showing an albatross in silhouette. (B,L,D)

### DAY 12-13: Isla de Los Estados (Staten Island), Argentina

We have been given special permission to visit extraordinary Staten Island, and our ship will be one of the only expedition ships ever allowed here. It's a place of superlatives, barely touched in recent decades and visited primarily by a few scientists and those who man the tiny naval observatory. The island was named by Dutch explorers in 1615. Its mountainous, forested landscapes and rugged fjords are beautiful, and we'll find a great deal of interest here. Our exact schedule will remain flexible to take best advantage of conditions. We'll search for southern rockhopper and Magellanic penguins, many other water birds, and fur seals and sea lions. We'll also look for otters on our landings ashore, and we'll see the replica of the 1884 San Juan de Salvamento "lighthouse at the end of the world," which inspired Jules Verne's novel by the same name. There will be chances to walk in the southern beech forests. These days are bound to stand out as a unique chance to explore a very remote place. (B,L,D)

### DAY 14-15: Ushuaia / Disembark / Santiago / U.S

Disembark in Ushuaia, the southernmost city in the world. Take a charter flight to Santiago and connect to your overnight flight home. (Day 14: B,L)

#### Please Note:

Itineraries are subject to change.



The Small Cruise Ship Collection

[www.small-cruise-ships.com](http://www.small-cruise-ships.com)

**01432 507 280** (within UK)

[info@small-cruise-ships.com](mailto:info@small-cruise-ships.com) | [small-cruise-ships.com](http://small-cruise-ships.com)



# The Small Cruise Ship Collection

[www.small-cruise-ships.com](http://www.small-cruise-ships.com)



[small-cruise-ships.com](http://small-cruise-ships.com)

[info@small-cruise-ships.com](mailto:info@small-cruise-ships.com)

## YOUR SHIP: NATIONAL GEOGRAPHIC ENDURANCE

<b>YOUR SHIP:</b>	<b>National Geographic Endurance</b>
<b>VESSEL TYPE:</b>	<b>Expedition Ship</b>
<b>LENGTH:</b>	
<b>PASSENGER CAPACITY:</b>	<b>126</b>
<b>BUILT/REFURBISHED:</b>	<b>2018</b>

A next-generation expedition ship, purpose-built for polar navigation. National Geographic Endurance is a next-generation expedition ship, purpose-built for polar navigation. A fully stabilized, highly strengthened, ice-class Polar Code PC5 (Category A) vessel, it is designed to navigate polar passages year-round, and safely explore uncharted waters, while providing exceptional comfort. Its patented X-BOW® is key to its design; its powerful wave-slicing action provides an extremely smooth ride in even adverse conditions, and even reduces spray on deck, for superior observation. She carries a full suite of expedition tools and offers a variety of experience-enhancing amenities. The luxury of comfort on expedition National Geographic Endurance comfortably accommodates 126 guests in 69 outside-facing cabins. Cabins are efficiently designed, with sizes range from the 140-square-foot solo cabin to the 430-square-foot category 7 suite. Fifty-three of the 69 cabins, including all 12 of the solo cabins, will feature small balconies with floor-to-ceiling sliding doors that bring in the spectacular views and ample natural light. Comfort & convenience in every room Every cabin has two portholes, a large window or balcony, and temperature controls. Bathrooms are modern and stocked

with botanically inspired hair products, soap, and shower gel, plus a hairdryer. Cabins are equipped with expedition command centers with tablets and USB/mobile device docking, TVs, Wi-Fi connections, and hair dryers. Dining: Food served aboard is fresh, local, and delicious, and sourced from suppliers who share our values of sustainable use whenever possible. Meals aboard are almost always served in the dining room, located aft of the lounge deck. When weather conditions allow, lighter fare may be served on the observation deck. There is no assigned seating and our dining room accommodates the entire expedition community in a single seating. During meals your expedition leader, naturalists, and any guest speakers aboard will join you. Public Areas: Two restaurants, a Chef's Table for small group dining, Observation Lounge with bar, gym, Wellness area, infinity-style outdoor hot tubs, library, main lounge with full service bar, 24-hour beverage, state-of-the-art facilities for films, slideshows and presentations, and a photo workshop area; plus, an expedition base with lockers for expedition gear, and an "open bridge" for access to our captain, officers and the art of navigation. Meals: Two restaurants, featuring local, sustainable choices and unassigned seating for flexible, inclusive dining; plus a Chef's table for intimate, small group dining. Main restaurant has 270° views, and the Observation deck restaurant features lighter, made-to-order fare. Cabins: All cabins face outside with large windows, private facilities and climate controls. 53 cabins have balconies. Cabins are equipped with expedition command centers with tablets and USB/mobile device docking, TVs, Wi-Fi connections, and hair dryers. Expedition Tools: Zodiac landing craft, kayaks,



The Small Cruise Ship Collection

[www.small-cruise-ships.com](http://www.small-cruise-ships.com)

**01432 507 280** (within UK)

[info@small-cruise-ships.com](mailto:info@small-cruise-ships.com) | [small-cruise-ships.com](http://small-cruise-ships.com)



## The Small Cruise Ship Collection

[www.small-cruise-ships.com](http://www.small-cruise-ships.com)



[small-cruise-ships.com](http://small-cruise-ships.com)

[info@small-cruise-ships.com](mailto:info@small-cruise-ships.com)

snowshoes, cross-country skis, undersea specialist operating a remotely Operated Vehicle (ROV) and underwater video camera for unique access to polar marine world, hydrophone, aerial remote-controlled camera and video microscope. Special Features: A full-time doctor, undersea specialist, National Geographic photographer, Lindblad-National Geographic certified photo instructor and video chronicler, an internet cafe and laundry. Wellness: The vessel is staffed by our wellness specialists and features a glass-enclosed yoga studio, gym, treatment rooms and spa relax area, and high- and low-heat saunas with ocean views. Expedition Landing Craft: Key to our operation is our fleet of expedition landing craft, which we use to land in places that would otherwise be inaccessible. With 8 of these boats and two loading stations used every time we disembark, we're able to transfer guests off the ship quickly, so you can be out on adventures, not idly waiting. The expedition landing craft we use are 19 feet long, powered by four-stroke outboard engines, and are capable of comfortably carrying 10-12 people. They are widely recognized as the safest and most versatile small boats afloat. Remotely Operated Vehicle: Capable of reaching 1,000 feet, far beyond the range of any Scuba diver, the ROV allows you to literally view parts of the undersea that are as unexplored as the moon. Chances are you, like many of our guests, will be struck by how surprisingly colorful undersea life is in these unlikely places. And this glimpse may fundamentally change how you view the ocean. Kayaks: National Geographic Endurance will be equipped with a fleet of kayaks large enough to ensure everyone who wants to can paddle at every opportunity. Consequently, prior kayaking experience isn't necessary--many of our guests have their first kayaking experience in extraordinary locations. Our custom-designed floating platform lets us deploy kayaks from

the ship, or any location we want--including far from shore. Kayakers are usually free to explore where they want within boundaries set by the undersea specialist and officer of the watch. Underwater camera: Our undersea specialist will dive often during your expedition, even in Alaska, with cold-water gear, to shoot high-definition, Cousteau-like footage of the deep. Colorful nudibranchs, swimming, plant-like crinoids, and mysterious fish with antifreeze blood that thrive in the frigid sea will give you an entirely new appreciation of the marine environment. Video microscope: Naturalists will use the video microscope to help explain all elements of the environment, including tiny organisms that are the building block of the marine ecosystem. Spellbinding live views of krill at 80x magnification fills the high-definition screens in the lounge with vivid detail, and fills every onlooker with a sense of wonder at the importance of otherwise unobservable creatures. Hydrophone: This underwater microphone is deployed to listen to the vocalizations of marine mammals. Real time transmissions of their eerie, haunting sounds can be broadcast through the ship or recorded for later playback. Few experiences in nature are as captivating as watching humpback whales feed close to the ship as their vocalizations play through the ship's PA system. Electronic charts: An electronic chart showing the ship's location, course, and speed is almost always on display in the lounge. Open bridge: You'll find our captains are engaged, knowledgeable members of your expedition who are eager to share their passion with you. Venture's open bridge features comfortable spaces to sit, enjoy the view, drink your morning coffee, or simply chat with the officers. Snorkeling gear & wetsuits: On warm weather itineraries where there will be snorkeling, you'll select a mask, snorkel, fins, and wetsuit that remain yours for the duration of the expedition. There's no need



The Small Cruise Ship Collection

[www.small-cruise-ships.com](http://www.small-cruise-ships.com)

**01432 507 280** (within UK)

[info@small-cruise-ships.com](mailto:info@small-cruise-ships.com) | [small-cruise-ships.com](http://small-cruise-ships.com)



# The Small Cruise Ship Collection

[www.small-cruise-ships.com](http://www.small-cruise-ships.com)



[small-cruise-ships.com](http://small-cruise-ships.com)

[info@small-cruise-ships.com](mailto:info@small-cruise-ships.com)

to pack and tote your own gear, although guests who prefer to are welcome to bring



their own.



The Small Cruise Ship Collection

[www.small-cruise-ships.com](http://www.small-cruise-ships.com)

**01432 507 280** (within UK)

[info@small-cruise-ships.com](mailto:info@small-cruise-ships.com) | [small-cruise-ships.com](http://small-cruise-ships.com)



# The Small Cruise Ship Collection

www.small-cruise-ships.com

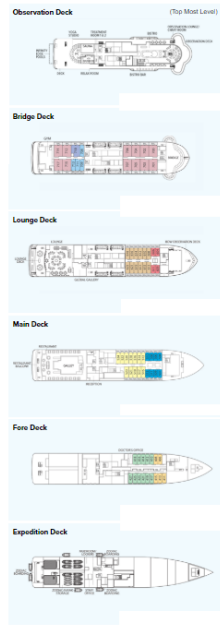


small-cruise-ships.com

info@small-cruise-ships.com

## INSIDE YOUR SHIP

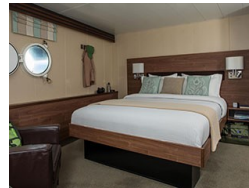
### National Geographic Endurance



### Category 1



### Category 1. From



### Category 2

### Category 2. From



### Category 3

### Category 3. From

### Category 4

### Category 4. From

### Category 5

### Category 5. From

### Category 6

### Category 7

### Category 7. From

### Category SA (solo). From

### Category SB (solo). From

### Suite A Solo





# The Small Cruise Ship Collection

[www.small-cruise-ships.com](http://www.small-cruise-ships.com)



[small-cruise-ships.com](http://small-cruise-ships.com)

[info@small-cruise-ships.com](mailto:info@small-cruise-ships.com)

## PRICING

### 06-Oct-2025 to 19-Oct-2025

Category SB (solo). From	£20169 GBP pp
Category 1. From	£16632 GBP pp
Category 7. From	£26299 GBP pp
Category 2. From	£16970 GBP pp
Category 5. From	£21904 GBP pp
Category SA (solo). From	£17623 GBP pp
Category 3. From	£19178 GBP pp
Category 4. From	£20515 GBP pp

### 27-Feb-2026 to 12-Mar-2026

Category 3	£18212 GBP pp
Suite A Solo	£21180 GBP pp
Category 4	£19533 GBP pp
Category 5	£20910 GBP pp
Category 1	£15504 GBP pp
Category 7	£25270 GBP pp
Category 6	£23292 GBP pp
Category 2	£16029 GBP pp
Suite B Solo	£25240 GBP pp



The Small Cruise Ship Collection

[www.small-cruise-ships.com](http://www.small-cruise-ships.com)

01432 507 280 (within UK)

[info@small-cruise-ships.com](mailto:info@small-cruise-ships.com) | [small-cruise-ships.com](http://small-cruise-ships.com)