

The Small Cruise Ship Collection

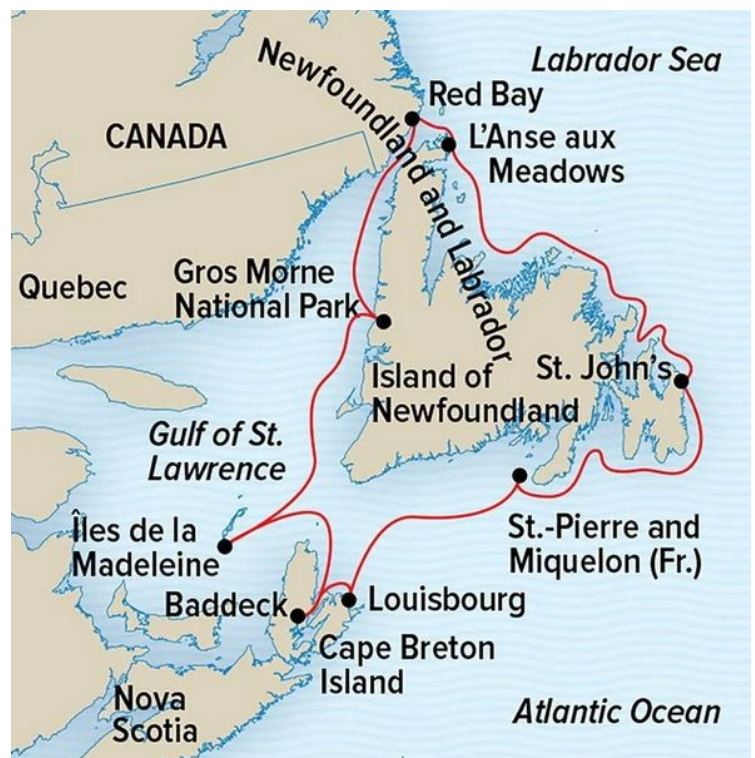
www.small-cruise-ships.com

small-cruise-ships.com

info@small-cruise-ships.com

THE CANADIAN MARITIMES AND NEWFOUNDLAND

Embark on a satisfying circumnavigation of Newfoundland aboard National Geographic Explorer and sail into Eastern Canada's breathtaking natural beauty. Discover the astonishing Viking past at L'Anse aux Meadows, the only widely accepted site of trans-Atlantic Viking establishment and very early Norse exploration. See WWII harbor defenses and visit the only North American island that remains under French control, an outpost of its era as a colonial superpower. Your journey of pure discovery ventures to the legendary islands of Cape Breton, St. Pierre, and the Îles de la Madeleine. Discover sweeping dunes, wind-and wave-carved cliffs, and sandstone hills in a wild land.



ITINERARY

DAY 1: St. John's, Newfoundland and Labrador, Canada / Embark
Arrive in St. John's, the picturesque capital city of Newfoundland and Labrador. Settle into National Geographic Explorer. (D)

DAY 2: St-Pierre, France
Our first landfall is St-Pierre, France's oldest remaining overseas territory. Explore this picturesque French fishing enclave where we visit a local island to learn the importance of the historic cod fisheries and explore the fascinating L'Arche Museum. (B,L,D)

The Small Cruise Ship Collection

www.small-cruise-ships.com

01432 507 280 (within UK)

info@small-cruise-ships.com | small-cruise-ships.com



The Small Cruise Ship Collection

www.small-cruise-ships.com

small-cruise-ships.com

info@small-cruise-ships.com

DAY 3: Louisbourg & Baddeck, Cape Breton Island, Nova Scotia

Today we visit the reconstructed Fortress of Louisbourg, an 18th-century fort where the British and French fought. Later, we visit the village of Baddeck, where Alexander Graham Bell built his summer home, now the centerpiece of a beautiful park and museum. Explore the life of Bell and enjoy a tour of the Bell Museum to view historic artifacts. (B,L,D)

DAY 4: Iles De La Madeleine, Quebec

A cluster of wispy islands isolated in the Gulf of St. Lawrence, the Iles de la Madeleine are home to miles of dunes, grassy hills, and dazzling red sandstone cliffs. Local experts will guide us across this landscape of caves and sea arches, stopping along the way in colorful fishing villages as we learn about Acadian culture. (B,L,D)

DAY 5: Exploring the Gulf of St. Lawrence

This is a day of exploration where our expedition team will look for the best opportunities to focus on the natural history and landscapes of the region. (B,L,D)

DAY 6: Gros Morne National Park

Graced by cliffs, fjords, and a sweeping alpine plateau, Gros Morne National Park has been designated a UNESCO World Heritage site for its spectacular geology. Go on a variety of walks with our naturalists along waterfalls, marine inlets, and forested trails. Learn about the forces that shaped this land and the ancient serpentine rock that illustrates the phenomenon of plate tectonics. (B,L,D)

DAY 7: Red Bay

Today we explore Red Bay, the site of a historic Basque whaling station dating back to the 1500s. See original Basque remains

and artifacts at this National Historic Site or take a scenic hike to a viewpoint overlooking the small village. (B,L,D)

DAY 8: L'Anse aux Meadows

In the World Heritage site of L'Anse aux Meadows, walk among 11th-century Norse ruins and reconstructed sod huts and learn the saga of the Vikings in North America—nearly 500 years before Columbus arrived. (B,L,D)

DAY 9: Exploring Eastern Newfoundland

Wild, rugged, and often accessible only by sea, Newfoundland's east coast is dotted with tiny fishing villages tucked into coves. Explore these stunning shores, and back aboard, you'll gain insights from our experts into the island's people and wildlife. (B,L,D)

DAY 10: St. John's / Disembark / Home

Sail through The Narrows in the early morning and disembark in St. John's. Visit the colorful waterfront and historic Signal Hill or The Rooms Museum before you transfer to the airport for your flight home. (B)

Please Note:

Itineraries are subject to change.

The Small Cruise Ship Collection
www.small-cruise-ships.com

01432 507 280 (within UK)

info@small-cruise-ships.com | small-cruise-ships.com

The Small Cruise Ship Collection

www.small-cruise-ships.com

small-cruise-ships.com

info@small-cruise-ships.com

YOUR SHIP: NATIONAL GEOGRAPHIC EXPLORER

YOUR SHIP:	National Geographic Explorer
VESSEL TYPE:	Luxury Expedition
LENGTH:	108 meters
PASSENGER CAPACITY:	148 (single & twin cabins)
BUILT/REFURBISHED:	1982 / 2008

National Geographic Explorer is a state-of-the-art expedition ship. It is a fully stabilized, ice-class vessel, enabling it to navigate polar passages while providing exceptional comfort. It carries kayaks and a fleet of Zodiac landing craft. An Undersea Specialist operates a remotely operated vehicle (ROV) and sophisticated video equipment, extending access to the underwater world. Public areas : Bistro Bar; Chart Room; Restaurant; Global Gallery; Library, Lounge with full service bar and state-of-the-art facilities for films, slideshows and presentations; Mud Room with lockers for expedition gear, and Observation Lounge. Our "Open Bridge" provides guests an opportunity to meet our Officers and Captain and learn about navigation. Meals : Served in single seatings with unassigned tables for an informal atmosphere and easy mingling. Menu is international with local flair. Cabins : All cabins face outside with windows or portholes, private facilities and climate controls. Expedition Equipment : Zodiac landing craft, kayaks, Remotely Operated Vehicle (ROV), hydrophone, SplashCam, underwater video camera, Crow's Nest remote controlled camera, video microscope, snorkeling gear. Special Features : A full-time doctor, Undersea Specialist, LEX Photo Specialist and Video

Chronicler, Internet Cafe and laundry. Wellness : The vessel is staffed by two Wellness Specialists and features a glass enclosed Fitness Center, outdoor stretching area, two LEXspa treatment rooms



and Sauna.

The Small Cruise Ship Collection

www.small-cruise-ships.com

01432 507 280 (within UK)

info@small-cruise-ships.com | small-cruise-ships.com

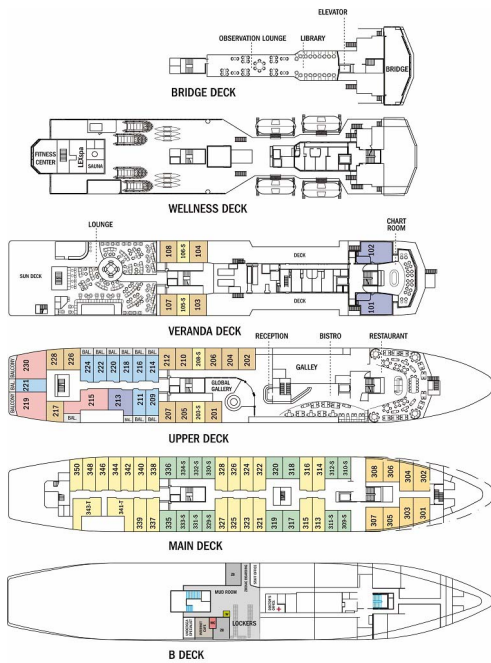
The Small Cruise Ship Collection

www.small-cruise-ships.com

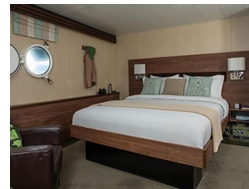
small-cruise-ships.com

info@small-cruise-ships.com

INSIDE YOUR SHIP



Category 1



Category 2



Category 2

Category 3



Category 4

Category 4

Category 5

Category 6

Category 6

Category 7

Category SA (solo)

Category SB (solo)

The Small Cruise Ship Collection

www.small-cruise-ships.com

01432 507 280 (within UK)

info@small-cruise-ships.com | small-cruise-ships.com

The Small Cruise Ship Collection

www.small-cruise-ships.com

small-cruise-ships.com

info@small-cruise-ships.com

PRICING

12-Sep-2024 to 20-Sep-2024

Category 6	£14565 GBP pp
Category 4	£10825 GBP pp
Category 2	£9819 GBP pp
Category SA (solo)	£12129 GBP pp
Category 1	£9129 GBP pp
Category 5	£12745 GBP pp
Category 3	£10219 GBP pp
Category 7	£17299 GBP pp
Category SB (solo)	£12705 GBP pp

21-Sep-2024 to 29-Sep-2024

Category 5	£9308 GBP pp
Category 1	£6796 GBP pp
Category 4	£7904 GBP pp
Category 2	£7165 GBP pp
Category SB (solo)	£9282 GBP pp
Category SA (solo)	£8860 GBP pp
Category 7	£12636 GBP pp
Category 6	£10644 GBP pp
Category 3	£7456 GBP pp

31-Aug-2025 to 08-Sep-2025

Category 6	£12225 GBP pp
Category 7	£14523 GBP pp
Category SB (solo)	£10660 GBP pp
Category 1	£7659 GBP pp
Category SA (solo)	£10181 GBP pp
Category 2	£8236 GBP pp
Category 4	£9079 GBP pp
Category 5	£10696 GBP pp
Category 3	£8574 GBP pp

09-Sep-2025 to 17-Sep-2025

Category 6	£11523 GBP pp
Category 2	£7753 GBP pp
Category 3	£8070 GBP pp
Category SA (solo)	£9594 GBP pp
Category 4	£8548 GBP pp
Category 5	£10077 GBP pp
Category 1	£7207 GBP pp
Category 7	£13681 GBP pp
Category SB (solo)	£10046 GBP pp