

# The Small Cruise Ship Collection

www.small-cruise-ships.com

small-cruise-ships.com

info@small-cruise-ships.com

## CAPE YORK AND ARNHEM LAND - DARWIN TO CAIRNS (CORAL DISCOVERER)

Explore Northern Australian coastline and immerse yourself in the diverse cultures of Indigenous Australia, with this exclusive Cape York & Arnhem Land itinerary. This expedition will be focusing on Australian art and curated by traditional artist, Brian Robinson, as we will be taking you into some of the continent's most acclaimed art centres. On board, you will also have the opportunity to create your own unique piece with an art class hosted by Brian himself. Sailing aboard Coral Discoverer, this itinerary will follow the coast of the remote and culturally rich Arnhem Land, crossing the Gulf of Carpentaria and into the Torres Strait. Stand at the very tip of Australia at Cape York, before we make our way down through the Great Barrier Reef to Cairns. Experience traditions unchanged for centuries, sacred rock art and remote lands only permitted accessible by a fortunate few. See how generations have passed on artistic traditions, and how this important cultural legacy is being kept alive today. Visit world renowned art centres in Yirrkala and Nhulunbuy. Watch Elders tell their story through art in Maningrida. See how the women of Tiwi Islands give back to their community through their local fabric printmaking and clothing business. Join Coral Expeditions on this exciting expedition to the far reaches of Australian's Northern coastline.



### ITINERARY

#### DAY 1: DEPART DARWIN

Board at Darwin's Fort Hill Wharf at 7:00am ahead of our 8:00am departure. Spend time getting to know your fellow travellers and enjoy the Captain's Welcome Drinks before the first of many delicious dinners

#### TIWI ISLANDS

Coral Expeditions tiwi islands Visit remote Bathurst Island. With local Tiwi guides, we learn of the unique culture and visit the art centre. Be welcomed with a cultural performance and basket-weaving exhibition before enjoying a traditional Australian afternoon tea of damper and billy tea.

#### COBOURG PENINSULA

The Small Cruise Ship Collection

www.small-cruise-ships.com

01432 507 280 (within UK)

info@small-cruise-ships.com | small-cruise-ships.com



## The Small Cruise Ship Collection

[www.small-cruise-ships.com](http://www.small-cruise-ships.com)

[small-cruise-ships.com](http://small-cruise-ships.com)

[info@small-cruise-ships.com](mailto:info@small-cruise-ships.com)

Discover Garig Gunak Barlu National Park on the Cobourg Peninsula. Join Park Rangers in Port Essington, famous for the failed Victoria Settlement, and explore the ruins while learning about the fascinating history of this early colonial outpost.

### MANINGRIDA

Anchor in the mighty Liverpool River and travel ashore to explore the Maningrida Art Centre, museum, and the local boutique, where hand-painted textiles can be purchased.

### ELCHO ISLAND: GALIWIN'KU AND GAWA

torres-strait-islands-coral-expeditions The friendly locals of Elcho Island proudly welcome us to their community this morning. Meet some of the local artists who have their unique art exhibited in the famous art galleries of the world including the Louvre. In the afternoon, visit the community and school of Gawa.

### HOLE IN THE WALL AND WESSEL ISLANDS

We travel through the narrow channel between Raragala and Guluwuru Islands, known as the 'Hole in the Wall'.

### YIRRKALA ART CENTRE

Visit the spectacular Buku-Larrnggay Mulka Centre at Yirrkala, outside of Nhulunbuy. Here, the Yirrkala Art Centre represents Yol u artists from around the region. Established in 1976 as an act of self-determination, the art centre has forged a vibrant path for Yol u contemporary art. A museum built in 1988 houses a collection of works detailing historical artefacts and important moments, including the Message Sticks from 1935 and the Yirrkala Church Panels from 1963.

### CRUISING THE GULF OF CARPENTARIA

Enjoy a relaxing day at sea with presentations by our guest lecturers. You will hear about the fascinating history of the Macassan traders and early explorers of the Arnhem Land coast.

### BADU ISLAND & TORRES STRAIT

Have the unique opportunity to visit Badu Island. Visit the fabulous art centre and enjoy the hospitality of the Badu islanders. We may visit additional Torres Strait Islands, such as Thursday Island and Moa Island.

### NORTHERNMOST POINT OF CAPE YORK

Cruise to the Tip of Cape York and enjoy champagne while the sun sets.

### FORBES ISLAND

Enjoy a day exploring Forbes Island, an excellent spot for swimming or snorkelling from the pristine sandy beaches. Take a walk to the grave of beche-de-mer fisherman Frederick Lancaster.

### DAVIE REEF AND FLINDERS GROUP

Visit Stanley Island in the Flinders Group, and view the isolated Endaen Aboriginal rock art depicting the first sailing ships to visit Queensland shores. At Davie Reef, enjoy swimming and snorkelling and observe the large seabird rookery.

### LIZARD ISLAND

Explore secluded Lizard Island, one of the most beautiful islands on the Queensland coast. Venture into the crystal clear waters for swimming and snorkelling or take a walk along the sparkling white beach. An energetic guided walk leads to Cook's Look - from this peak, Captain James Cook was able to sight a navigable passage through the treacherous reef after repairing

The Small Cruise Ship Collection

[www.small-cruise-ships.com](http://www.small-cruise-ships.com)

01432 507 280 (within UK)

[info@small-cruise-ships.com](mailto:info@small-cruise-ships.com) | [small-cruise-ships.com](http://small-cruise-ships.com)



the HMB Endeavour.

**DAY 12: ARRIVE IN CAIRNS**

Arrive in Cairns and disembark at 8:00am.

**Please Note:**

This itinerary is an indication of the destinations we visit and activities on offer. Throughout the expedition we may make changes to the itinerary as necessary to maximise your expeditionary experience. Allowances may be made for unexpected closures, seasonal variations, weather, tidal conditions and any other event that may affect the operation of the vessel.



## The Small Cruise Ship Collection

[www.small-cruise-ships.com](http://www.small-cruise-ships.com)

[small-cruise-ships.com](http://small-cruise-ships.com)

[info@small-cruise-ships.com](mailto:info@small-cruise-ships.com)

## YOUR SHIP: CORAL ADVENTURER

**YOUR SHIP:** Coral Adventurer

**VESSEL TYPE:**

**LENGTH:**

**PASSENGER CAPACITY:**

**BUILT/REFURBISHED:**

Launched in 2018 with her maiden voyage in 2019, Coral Adventurer has been designed and built to take you closer to unspoilt vistas in comfort, style and safety. A culmination of two years of design and three decades of passion for expedition cruising. BIGGER IS NOT BETTER At a time when cruise ships get larger and glitzier, we remain stubbornly compact and intimate. Our ships are designed to take you to unspoilt destinations not accessible to large ships. We want you to have the luxury of space, dine with whom you please, or find your quiet corner on deck. So Coral Adventurer has just 60 spacious cabins. This preserves the intimate atmosphere we are known for without sacrificing the stability and comfort of a true ocean going vessel. BUILT FOR DISCOVERY The Coral Adventurer features the trademark dual 'Xplorer' tenders cradled on a hydraulic platform slung off the back of the ship, enabling our guests to go ashore in comfort and ease. The shallow draft of the ship enables us to go closer to shore than larger ships. Together with a renowned expedition team, this new ship will offer the most advanced expedition capabilities of any small ship afloat. BUILT FOR COMFORT With active stabilisers dampening sea motion, mostly balcony cabins, and interiors designed with the colours and

textures of tropical Queensland, the Coral Adventurer is a comfortable ship. She features promenade decks, generous communal areas that accommodate all guests, a passenger elevator, and an open kitchen where you can observe our chefs whip up small batch cuisine from locally sourced ingredients. BUILT FOR PERSONAL SERVICE The Coral Adventurer will continue a proud tradition of Australian flagged vessels with friendly and professional Australian crew. The onboard atmosphere remains refreshingly informal and intimate. Take your seat at our bridge lounge, chat with the captain at your leisure or accompany our chefs on a market tour. Food and wine features Single seating dining area with communal 'wine table' finished with Australian stone; serving buffet breakfast and lunch, and multi-course table d'hote dinners Showcase galley visible to guests for fresh small-batch cuisine featuring Australian produce Multiple indoor and outdoor bars, including the Explorer bar on the sundeck for sunset drinks with 180 degree views Curated wine cellar featuring modestly priced boutique wines for daily drinking and exceptional vintage Australian reds. Guest comfort All outside guest cabins with en-suite bathrooms; majority have private balcony Active stabilisers to dampen sea motion Gym equipped with elliptical trainers and treadmills Passenger elevator Wi-Fi available in all

The Small Cruise Ship Collection  
[www.small-cruise-ships.com](http://www.small-cruise-ships.com)

01432 507 280 (within UK)

[info@small-cruise-ships.com](mailto:info@small-cruise-ships.com) | [small-cruise-ships.com](http://small-cruise-ships.com)



# The Small Cruise Ship Collection

[www.small-cruise-ships.com](http://www.small-cruise-ships.com)

[small-cruise-ships.com](http://small-cruise-ships.com)

[info@small-cruise-ships.com](mailto:info@small-cruise-ships.com)



guest areas



The Small Cruise Ship Collection

[www.small-cruise-ships.com](http://www.small-cruise-ships.com)

**01432 507 280** (within UK)

[info@small-cruise-ships.com](mailto:info@small-cruise-ships.com) | [small-cruise-ships.com](http://small-cruise-ships.com)

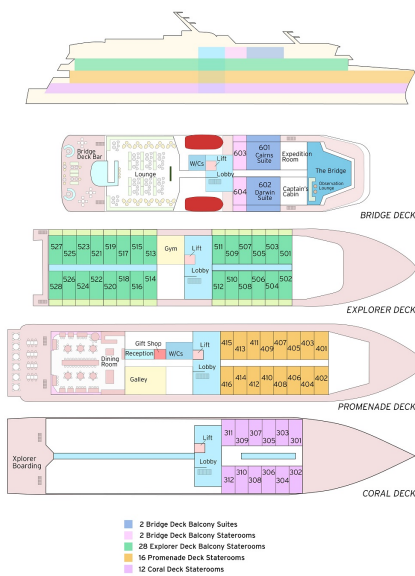
# The Small Cruise Ship Collection

www.small-cruise-ships.com

small-cruise-ships.com

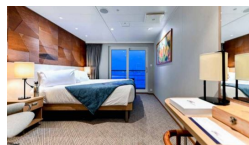
info@small-cruise-ships.com

## INSIDE YOUR SHIP



### BRIDGE DECK BALCONY STATEROOM

### BRIDGE DECK BALCONY SUITE



### Bridge Deck Balcony

### Bridge Deck Balcony Stateroom



### CORAL DECK STATEROOM

### EXPLORER DECK BALCONY STATEROOM

### Main Deck A

### Main Deck A Stateroom

### Main Deck B

### Main Deck B Stateroom

### PROMENADE DECK STATEROOM

### Promenade A

### Promenade A Stateroom

### Promenade B Stateroom



# The Small Cruise Ship Collection

[www.small-cruise-ships.com](http://www.small-cruise-ships.com)

[small-cruise-ships.com](http://small-cruise-ships.com)

[info@small-cruise-ships.com](mailto:info@small-cruise-ships.com)

## PRICING

### 01-Apr-2025 to 12-Apr-2025

Promenade A Stateroom	£8664 GBP pp
Main Deck A Stateroom	£7471 GBP pp
Main Deck B Stateroom	£6874 GBP pp
Promenade B Stateroom	£7772 GBP pp
Bridge Deck Balcony Stateroom	£10766 GBP pp

### 08-Aug-2025 to 19-Aug-2025

Bridge Deck Balcony	£11306 GBP pp
Promenade A	£9098 GBP pp
Main Deck B	£7012 GBP pp
Main Deck A	£7619 GBP pp

### 19-Aug-2025 to 30-Aug-2025

Main Deck A Stateroom	£7619 GBP pp
Bridge Deck Balcony Stateroom	£11306 GBP pp
Promenade A Stateroom	£9098 GBP pp
Main Deck B Stateroom	£7012 GBP pp
Promenade B Stateroom	£8160 GBP pp

### 05-Oct-2025 to 16-Oct-2025

CORAL DECK STATEROOM	£6823 GBP pp
BRIDGE DECK BALCONY SUITE	£14703 GBP pp
BRIDGE DECK BALCONY STATEROOM	£12025 GBP pp
EXPLORER DECK BALCONY STATEROOM	£10919 GBP pp
PROMENADE DECK STATEROOM	£8190 GBP pp