

The Small Cruise Ship Collection

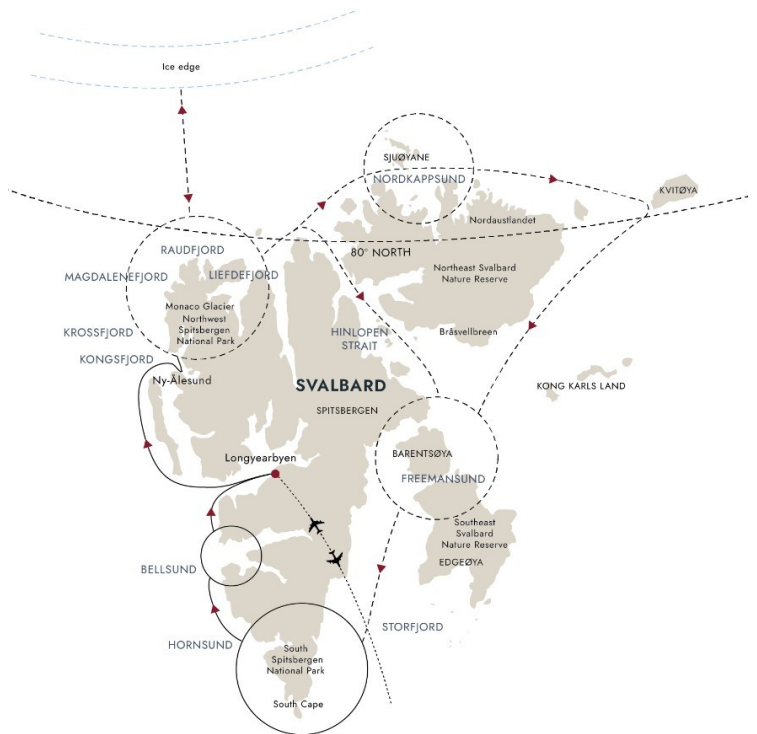
www.small-cruise-ships.com

small-cruise-ships.com

info@small-cruise-ships.com

CIRCUMNAVIGATING SVALBARD - THE ULTIMATE 16 DAY EXPEDITION

Wild nature, untamed scenery Going further east and deeper into polar bear territory than any of our other Svalbard expeditions, our goal is to fully circumnavigate the Svalbard archipelago - ice conditions permitting. Whether you opt to experience the ever-changing icescape of early summer, or see the kaleidoscope of colour later in the season, you'll be immersed in incredible scenery and see iconic wildlife, with several days dedicated to exploring. Land of infinite wonder Svalbard contains vast and pristine nature reserves where few humans ever set foot. It's the domain of seabirds, such as Brunnich's Guillemots and kittiwakes, as well as mammals like reindeer, walrus and seals. Early in the season we'll explore close to the northern ice edge, while later on we'll see the land bursting to life with wildflowers. As we sail, we'll be on the lookout for marine animals in the waters around us, including graceful and mighty whales.



ITINERARY

Day 1 Explore cosmopolitan Oslo

Enjoy time in Oslo before flying to Svalbard

Your expedition begins in Oslo, Norway's fjord-side capital. If you have time, why not explore the city centre on your own.

The Small Cruise Ship Collection

www.small-cruise-ships.com

01432 507 280 (within UK)

info@small-cruise-ships.com | small-cruise-ships.com



The Small Cruise Ship Collection

www.small-cruise-ships.com

small-cruise-ships.com

info@small-cruise-ships.com

With its rich history and fashionable art scene, Oslo is a fascinating city. You'll find museums, galleries, and breathtaking architecture - including the beautiful Opera House and new Munch Museum.

Take a stroll in the Ekebergparken sculpture park, visit Akershus Fortress or relax in a floating sauna. Explore modern Sørenga and enjoy urban beach life or try New Nordic cuisine before spending the night in your airport hotel in Oslo.

[Day 2-4 Welcome to Longyearbyen](#)

Get to know the town at the top of the world

After a morning flight from Oslo, your adventure begins with two nights in the world's northernmost town. A colourful frontier settlement where people are outnumbered by snowmobiles, you'll discover that Longyearbyen is a unique place on the edge of the Arctic wilderness.

Spend the next two-and-a-half days exploring Longyearbyen and its surroundings. The town is perfect for getting around on foot - stroll down the main street and you might see Svalbard reindeer saunter by. But don't worry, although wild, they're curious and tame.

To give you a wider look, local guides will take you on an e-bike tour of the area and present the historic backdrop to the town at the top of the world.

From the expedition centre you'll head out of town and along an unpaved road to Hotellneset, which has a lake and showcases the remnants of the area's mining past. Svalbard's very first hotel was built here by Hurtigruten pioneer Richard With before the modern town we see today had even been constructed.

We'll then head back into Longyearbyen along the 'Burma Road', which was an important link for coal being shipped from the harbour, enjoying panoramic views as we ride. Sights along the way include an old funicular, the historic Svalbard Church and the ruined remains of the original Longyearbyen, which was bombed during WWII.

From here we'll continue under the steep cliffs of the Plateau Mountain, passing the graveyard and the iconic Huset - a building which has been everything from a cinema to bar, school and church. We will continue on to Coal Miners' Cabins, the original miners' home, and enjoy a relaxed lunch before completing our tour and returning to the hotel.

On Day 4 you'll have the morning to finish off looking around Longyearbyen before boarding the ship in the afternoon and beginning our expedition cruise.

[Day 5 Peaceful Ny-Ålesund](#)

Experience science, serenity and epic scenery

The Small Cruise Ship Collection

www.small-cruise-ships.com

01432 507 280 (within UK)

info@small-cruise-ships.com | small-cruise-ships.com



The Small Cruise Ship Collection

www.small-cruise-ships.com

small-cruise-ships.com

info@small-cruise-ships.com

Today you'll discover the serenity of Ny-Ålesund and neighbouring fjords such as Krossfjord and Kongsfjord. Disconnect and enjoy a day without distractions as the Norwegian Mapping Authority's nearby geodetic station means we must switch off Wi-Fi and Bluetooth.

One of the northernmost settlements and a former mining town, Ny-Ålesund was the starting point for Roald Amundsen's expeditions north with the airship 'Norge'. Now a hub for global science and climate research, you can still see remnants of the town's history.

You'll be immersed in rugged, glacial scenery as we explore the fjords around Ny-Ålesund. Be ready for adventure; we'll seize any opportunity to launch our small expedition boats, go ashore to hike or cruise by majestic glaciers.

[Day 6-7 Northwest Spitsbergen National Park](#)

Experience pristine Arctic wilderness

Over the next three days, you'll explore the natural beauty and rugged tundra of Northwest Spitsbergen National Park. In this wilderness of steep mountains, stark glaciers and beautiful offshore islands, we'll scan for animals of the Arctic - whales, seals, walruses and reindeer. If we're really lucky, we might even see the elusive polar bear from the Observation Deck of the ship. In stunning Kongsfjord, you may see impressive glaciers calving into the sea.

Be ready for adventure; we'll seize any opportunity to launch our kayaks or use our small expedition boats and go ashore to hike or participate in a beach cleanup.

[Day 8-9 Ice edge attempt](#)

Experience the opportunity of sailing to the edge of the polar ice cap

If conditions allow, we'll sail north and cross the 80th parallel to explore the ever-changing ice edge. The transition zone between the ice cap and the sea is a magical yet ephemeral place where the waters are filled with ice floes and drifting pack ice. From the ship there are great opportunities here for spotting wildlife, such as seals and walruses who lounge photogenically on the sparkling ice. And if the conditions are right, we'll lower our expedition boats into the water and enjoy an unforgettable close-up experience amid the floating ice.

The ice edge isn't a fixed boundary, and it moves depending on the season and conditions, so visiting it will be an attempt rather than a certainty. From May to August, as summer progresses, it retreats further towards the pole, meaning it may be out of reach for us. If this is the case then we'll instead explore the no-less-impressive deep fjords, mighty glaciers and enchanting scenery of the Svalbard coast. In late July and into August, this is a time when the wildflowers appear, blanketing the landscape with a blaze of beauty and colour.

The Small Cruise Ship Collection

www.small-cruise-ships.com

01432 507 280 (within UK)

info@small-cruise-ships.com | small-cruise-ships.com



Day 10-13 Exploring the east

Scouting for polar bears, seabirds and walrus

Be ready for anything as this stage of your voyage continues to be truly adventurous. If sea ice permits, we'll continue east, exploring the pristine wilderness of northeast Svalbard before heading south in our attempt to fully circumnavigate the archipelago.

Perhaps we'll head to the immense Brasvellbreen glacier to see waterfalls tumbling into the icy depths, or lower our small boats around Kvitøy. Every day in the east will be a new opportunity to look for polar bears roaming the ice. Continuing south, we may head to Freemansundet and Kapp Lee or take our small expedition boats to Edgeøya or Barentsøya.

In true expedition style, exactly where we'll go will depend on the conditions on the day. Channel your inner explorer on exhilarating landings, hikes and kayak trips, and look out for wildlife like polar bears, walrus, guillemots and gulls.

And if the ice doesn't allow us to pass to the east, you'll experience just as much adventure: we'll delve deeper into the wonders of western Svalbard or attempt to circumnavigate Spitsbergen through the Hinlopen Strait. We'll take a flexible route through deep fjords and by soaring mountains, seeking out remarkable Arctic wildlife.

Day 14-15 Hornsund and Bellsund

Majestic glaciers, birds and pioneer history

Your expedition cruise continues south towards Hornsund - one of Svalbard's most beautiful fjords. Rich, colourful vegetation makes way for towering mountains along this picturesque waterway. Head out on deck to spot seals and whales, Mount Hornsundtind, and glaciers calving into the sea.

Then we head to Bellsund, whose cliffs are home to large colonies of auks, guillemots and Northern Fulmars, along with Arctic foxes and Svalbard reindeer below. Look out for the early mining settlements here and learn about Wanny Woldstad, the first female trapper.

Our activities today will be determined by the ever-changing weather conditions of Hornsund and Bellsund. Your Expedition Team will decide on the best possibilities for exploring on the day.

Day 16 Return to Longyearbyen

A final day on top of the world

Your Arctic adventure comes to an end back in Longyearbyen. A transfer will take you to the airport for your flight to Oslo. You'll return home knowing more about Arctic animals, history, polar ice and climate change than you arrived with - and memories of



 The Small Cruise
Ship Collection
www.small-cruise-ships.com

small-cruise-ships.com

info@small-cruise-ships.com

an incredible experience.

If you're not ready to say goodbye just yet, why not spend some more time in the Arctic and join our optional Post-Programme.

Please note:

Itineraries are subject to change.

 The Small Cruise
Ship Collection
www.small-cruise-ships.com

01432 507 280 (within UK)

info@small-cruise-ships.com | small-cruise-ships.com



The Small Cruise Ship Collection

www.small-cruise-ships.com



small-cruise-ships.com

info@small-cruise-ships.com

YOUR SHIP: FRAM

YOUR SHIP:

Fram

VESSEL TYPE:

LENGTH:

PASSENGER CAPACITY:

BUILT/REFURBISHED:

MS Fram is designed for sailing in polar waters, holds the highest safety standards and is the perfect size for optimum nautical manoeuvrability and guests' comfort. With space for only 276 guests, you are sure to get to know many of your fellow travellers. You will share stunning sights and memories of a lifetime long after returning home. The Norwegian word Fram means 'forward' - lifting expectations of the voyage at hand. MS Fram was built in 2007 with one mission in mind - to bring her guests closer to nature, wildlife and unforgettable experiences. As well as offering numerous lounges in which to relax, our more active guests can use our well-equipped gym. Meanwhile, on deck, our Jacuzzis guarantee you surreal memories when passing the towering icebergs of Antarctica or Greenland.



The Small Cruise Ship Collection

www.small-cruise-ships.com

01432 507 280 (within UK)

info@small-cruise-ships.com | small-cruise-ships.com

The Small Cruise Ship Collection

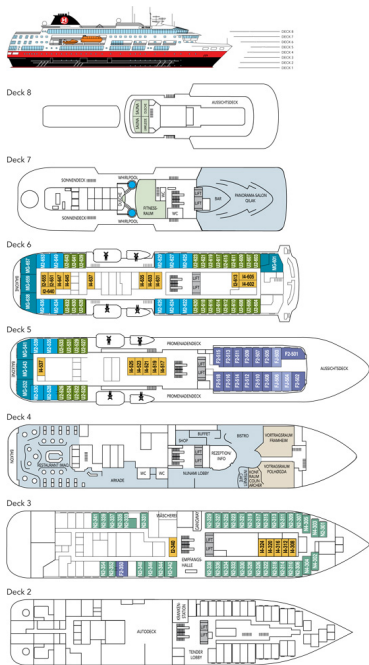
www.small-cruise-ships.com



small-cruise-ships.com

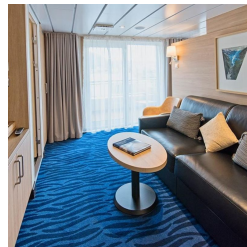
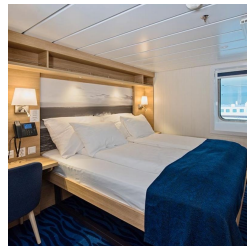
info@small-cruise-ships.com

INSIDE YOUR SHIP



Arctic Superior. From

Expedition Suite. From



Polar Inside. From

Polar Outside. From

The Small Cruise Ship Collection

www.small-cruise-ships.com



small-cruise-ships.com

info@small-cruise-ships.com

PRICING

14-Jun-2025 to 29-Jun-2025

Polar Outside. From	£11015 GBP pp
Polar Inside. From	£9695 GBP pp
Arctic Superior. From	£12025 GBP pp
Expedition Suite. From	£15139 GBP pp

21-Jun-2025 to 06-Jul-2025

Expedition Suite. From	£14595 GBP pp
Arctic Superior. From	£11795 GBP pp
Polar Outside. From	£11249 GBP pp

05-Jul-2025 to 20-Jul-2025

Polar Outside. From	£11199 GBP pp
Polar Inside. From	£9855 GBP pp
Arctic Superior. From	£12235 GBP pp
Expedition Suite. From	£15405 GBP pp

12-Jul-2025 to 27-Jul-2025

Expedition Suite. From	£16405 GBP pp
Arctic Superior. From	£12799 GBP pp
Polar Outside. From	£12455 GBP pp

02-Aug-2025 to 17-Aug-2025

Arctic Superior. From	£12799 GBP pp
Expedition Suite. From	£15885 GBP pp
Polar Outside. From	£12709 GBP pp

20-Jun-2026 to 05-Jul-2026

Polar Inside. From	£10585 GBP pp
Arctic Superior. From	£13195 GBP pp
Expedition Suite. From	£16665 GBP pp
Polar Outside. From	£12065 GBP pp

27-Jun-2026 to 12-Jul-2026

Expedition Suite. From	£16469 GBP pp
Arctic Superior. From	£13255 GBP pp
Polar Outside. From	£12625 GBP pp

11-Jul-2026 to 26-Jul-2026

Polar Outside. From	£12359 GBP pp
Polar Inside. From	£10839 GBP pp
Arctic Superior. From	£13519 GBP pp
Expedition Suite. From	£17095 GBP pp

18-Jul-2026 to 02-Aug-2026

Expedition Suite. From	£16469 GBP pp
Arctic Superior. From	£13255 GBP pp
Polar Outside. From	£12625 GBP pp

08-Aug-2026 to 23-Aug-2026

Expedition Suite. From	£16469 GBP pp
Arctic Superior. From	£13255 GBP pp
Polar Outside. From	£12625 GBP pp