

# The Small Cruise Ship Collection

www.small-cruise-ships.com

small-cruise-ships.com

info@small-cruise-ships.com

## CIRCUMNAVIGATION OF TASMANIA CRUISE FROM HOBART

Join us onboard Coral Discoverer for our full circumnavigation voyage around Tasmania, showcasing the best of its national parks, remote islands, and rugged coastline. During this 14 night voyage visit charming seaside towns, walk on some of Tasmania's most famed coastal trails, experience epicurean delights with local producers and spot abundant and unique wildlife.



### ITINERARY

#### Day 1: DEPART HOBART

Arrive at your advised check-in location for boarding at 4:00pm, with time to settle into your stateroom before our 5:00pm departure. Take the time to become acquainted with all the facilities onboard before meeting your fellow travellers, the Captain and crew for the Captain's Welcome Drinks.

#### MARIA ISLAND

The historic ruins and rugged cliffs of Maria Island National Park are home to diverse wildlife that includes Forester Kangaroos, Bennetts Wallabies, and wombats. Walk to historic Darlington Settlement, explore the ancient seabeds of the Fossil Cliffs, and marvel at the sandstone formations of the Painted Cliffs.



## The Small Cruise Ship Collection

[www.small-cruise-ships.com](http://www.small-cruise-ships.com)

[small-cruise-ships.com](http://small-cruise-ships.com)

[info@small-cruise-ships.com](mailto:info@small-cruise-ships.com)

### FREYCINET PENINSULA

At Freycinet Peninsula, see the pink granite formations of the Hazard Mountains, and the sweeping bays fringed by Eucalypts. Join a guided hike to the Wineglass Bay beach - one of the best beaches in the world. Witness fur seals lounging on the rocks at the Ile des Phoques.

### FLINDERS ISLAND

Visit wild and rugged Flinders Island, and marvel at the pink and gray granite mountain ranges of Strzelecki National Park. Land at beautiful Trousers Point beach, with the possibility of enjoying two of Tasmania's Great Short Walks at Trousers Point and Castle Rock. Visit seaside townships, discover the sad history of Wybalenna Settlement, and see relics of Flinders maritime past at the Furneaux Museum.

### KENT ISLAND GROUP

Weather permitting we visit the Kent Group of islands, Tasmania's northernmost National Park, and a marine protected area. These islands are the remains of a land bridge that once connected Tasmania with mainland Australia over 10,000 years ago. The waters of Kent Island are crystal clear, with a high diversity of fish species. On Deal Island we find the highest lighthouse in Australia, standing 305 meters above sea level, which is manned by volunteer caretakers, enjoy several walk options and swim and kayak off the beach.

### TAMAR RIVER VALLEY & LAUNCESTON

Cruise the scenic Tamar River to Launceston - which has recently been designated a UNESCO City of Gastronomy. Formed by the confluence of the North and South Esk rivers at Launceston, the river's banks are peppered with scenic reserves, historic properties and notable vineyards. Here we visit a local truffle farm, and spend time in the riverfront city of 'Launnie' to view its architectural treasures.

### STANLEY

On our visit to Stanley, walk to see 'The Nut' - an old volcanic plug that measures approximately 4.6km with a steep section that flattens to form the top. You can opt for a chairlift to skip the incline. Either way, be rewarded with coastal views before heading to explore Highfield Historic Site.

### KING ISLAND

Weather permitting we visit King Island, whose tumultuous waters are the final resting place of over 140 shipwrecks. Learn about the island's rich and often terrible maritime history, as well as its famous beef and cheese industries.

### WEST COAST CRUISING

Home to striking mountain ranges, ancient pines and untamed rivers, the wild west coast is the heart of Tasmania's wilderness

The Small Cruise Ship Collection  
[www.small-cruise-ships.com](http://www.small-cruise-ships.com)

01432 507 280 (within UK)

[info@small-cruise-ships.com](mailto:info@small-cruise-ships.com) | [small-cruise-ships.com](http://small-cruise-ships.com)



## The Small Cruise Ship Collection

[www.small-cruise-ships.com](http://www.small-cruise-ships.com)

[small-cruise-ships.com](http://small-cruise-ships.com)

[info@small-cruise-ships.com](mailto:info@small-cruise-ships.com)

and a true frontier. Take in the dramatic scenery during a day of cruising.

### PORT DAVEY

A marine reserve and part of the Tasmanian Wilderness World Heritage Area, spectacular Port Davey is only accessible by sea, small aircraft, or a multi-day hike. Enjoy the unforgettable experience of kayaking in Bramble Cove, and explore Melaleuca, along with hiking and bird-watching.

We will spend two days here, and upon departure, we will cruise past the remote south coast island of Maatsuyker, home to Australia's most southerly lighthouse.

\*Access to Port Davey and Bathurst Harbour is subject to annual permits being granted by Tasmania Parks and Wildlife.

### BRUNY ISLAND

Experience the rugged beauty of Fluted Cape as you walk along the sheer coastal cliffs. Learn about the rich maritime history of Adventure Bay, and explore the history of old whaling stations on the way to Grass Point.

### TASMAN PENINSULA

The Tasman Peninsula is known for its fascinating geological formations, including the soaring 300 metre high dolerite sea cliffs of Cape Raoul, Cape Pillar and Cape Hauy - the tallest in

the southern hemisphere. Watch fur seals hauling out on the rocks, as well as playful dolphins feeding and magnificent albatross soaring amongst the updrafts created by the sea cliffs. At Fortescue Bay we will hike a section of the Three Capes track towards Cape Hauy, and later the ship will circumnavigate the impressive Tasman Island. This evening experience a signature event at Bangor Vineyard, featuring the region's finest local produce and hosted by 7th generation farmer Matt Dunbabin.

### PORT ARTHUR

One of Australia's most significant historic places, the UNESCO World Heritage-listed Port Arthur ruins stand sentinel on the Tasman Peninsula south of the narrow isthmus of Eaglehawk Neck. For more than 40 years the Port Arthur penal colony housed British and Australian convicts sentenced to hard labour before its heavy iron doors clanked shut for the last time in 1877.

### DAY 15: ARRIVE HOBART

Our Tasmania adventure concludes in Hobart this morning as we bid farewell to new-found friends, the Master and crew, disembarking at 8:00am. A complimentary transfer is provided to CBD hotels, or the airport is included.

### Please Note:

This itinerary is an indication of the destinations we visit and activities on offer. Throughout the expedition we may make





changes to the itinerary as necessary to maximise your expeditionary experience. Allowances may be made for seasonal variations, weather, tidal conditions, and any other event that may affect the operation of the vessel. Coral Expeditions suggests that you do not arrive on the day of embarkation or depart on the day of disembarkation due to any changes that may occur in scheduling.



## The Small Cruise Ship Collection

[www.small-cruise-ships.com](http://www.small-cruise-ships.com)

[small-cruise-ships.com](http://small-cruise-ships.com)

[info@small-cruise-ships.com](mailto:info@small-cruise-ships.com)

## YOUR SHIP: CORAL DISCOVERER

**YOUR SHIP:** Coral Discoverer

**VESSEL TYPE:**

**LENGTH:**

**PASSENGER CAPACITY:**

**BUILT/REFURBISHED:**

Yacht-like Coral Discoverer set a new benchmark standard of sophistication in expedition cruising when she was constructed by us in 2005. Coral Discoverer sailed on pioneering expeditions through Papua New Guinea, the islands of the South Pacific, Vanuatu, New Zealand, West Papua, and the Spice Islands. She led explorations into remote areas, focusing on destinations that were largely inaccessible to larger cruise ships. Coral Discoverer is exceptionally nimble and maneuverable, with a shallow draught to get up close to destinations, ocean views from all public spaces, an expansive open-air sun deck, all outside-facing staterooms, and state-of-the-art tools for exploration including the Xplorer, zodiacs, a glass-bottom boat, and kayaks. A full refurbishment in 2018 saw the addition of private balconies, the much-loved Xplorer sundeck bar, and all new furnishings throughout the ship. Comfortable, reliable, and intimately scaled, Coral Discoverer now conducts expeditions across Australia's coast - Tasmania, Cape York and Arnhem Land and the Kimberley. Australian flagged and staffed by an Australian and New Zealand crew, your experience aboard Coral Discoverer will be memorable. Onboard Accommodation Onboard accommodation comprises 36 spacious modern

staterooms. You can select from Bridge, Promenade or Main Deck staterooms offering a choice of twin through to junior king-size doubles. All staterooms have an ocean view, en-suite facilities, settee, large wardrobe, desk, luggage storage, individual air-conditioning control, and are serviced daily. Onboard Facilities What you would expect of a much larger cruise ship: Large sundeck Spa Pool Guest computer Comprehensive reference library Phone and fax facilities Lecture lounge with large plasma screen Limited laundry facilities Two fully stocked cocktail bars Boutique and dive shop Air-conditioned public areas Coral Discoverer is equipped with the latest technology active stabilizers and is fitted with state-of-the-art safety and navigational equipment and is the only Australian passenger ship registered with full SOLAS compliance allowing opportunities to explore a multitude of international voyages. Dining All meals during the cruise are included. Breakfast and lunch are served in the Dining Room located on the Main Deck and are buffet-style while dinner is table d'hote. Coffee and tea is available 24 hours. Standard hours are breakfast from 7:00-8:30am, lunch at 12:30pm and dinner at 7:30pm however meal times may vary according to the day's activities. Meal times will be advised in the onboard daily bulletins. Excursion Boats And Zodiacs The "Xplorer" is a specially designed aluminium excursion vessel used for the majority of our excursions. This vessel has high horsepower engines and will accommodate all passengers at one time. The "Xplorer" will be used for landings and for extensive exploration of rivers and tributaries. For your added convenience and comfort, the "Xplorer" is equipped with an awning and toilet. We

The Small Cruise Ship Collection

[www.small-cruise-ships.com](http://www.small-cruise-ships.com)

01432 507 280 (within UK)

[info@small-cruise-ships.com](mailto:info@small-cruise-ships.com) | [small-cruise-ships.com](http://small-cruise-ships.com)



also carry two inflatable landing craft (Zodiacs). Designed for expedition work, these large and heavy-duty inflatables are extremely safe. Separate air compartments retain a large reserve of buoyancy even if the boats damaged. The flat bottom design permits these crafts to land directly onto the beaches. Expect nonetheless to wade through shallow water to reach the shore. See photo



below (right)



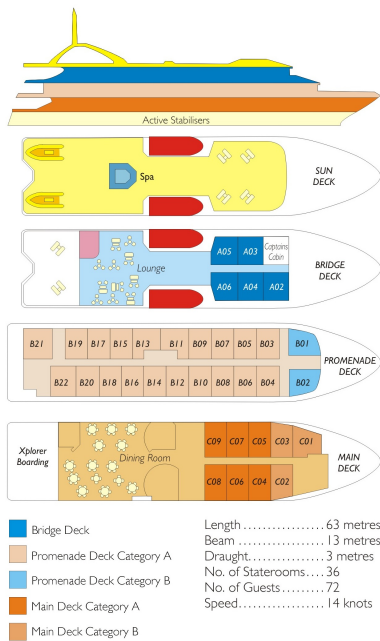
# The Small Cruise Ship Collection

www.small-cruise-ships.com

small-cruise-ships.com

info@small-cruise-ships.com

## INSIDE YOUR SHIP



Bridge Deck Balcony Stateroom    Main Deck A Stateroom

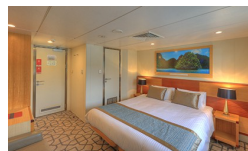


Main Deck B Stateroom

Promenade A Stateroom



Promenade B Stateroom





# The Small Cruise Ship Collection

[www.small-cruise-ships.com](http://www.small-cruise-ships.com)

[small-cruise-ships.com](http://small-cruise-ships.com)

[info@small-cruise-ships.com](mailto:info@small-cruise-ships.com)

## PRICING

### 13-Jan-2026 to 27-Jan-2026

Main Deck A Stateroom	£7269 GBP pp
Promenade B Stateroom	£8025 GBP pp
Bridge Deck Balcony Stateroom	£9385 GBP pp
Promenade A Stateroom	£8709 GBP pp
Main Deck B Stateroom	£6665 GBP pp

### 26-Feb-2026 to 12-Mar-2026

Promenade B Stateroom	£8025 GBP pp
Promenade A Stateroom	£8709 GBP pp
Main Deck B Stateroom	£6665 GBP pp
Main Deck A Stateroom	£7269 GBP pp
Bridge Deck Balcony Stateroom	£9385 GBP pp