

The Small Cruise Ship Collection

www.small-cruise-ships.com

small-cruise-ships.com

info@small-cruise-ships.com

CIRCUMNAVIGATION OF TASMANIA ABOARD CORAL DISCOVERER

Join us on our full circumnavigation voyage around Tasmania, showcasing the best of the remote parks, islands and harbours of this pristine island at the edge of the world. The second of our Tasmania circumnavigations, this 16 night voyage will include even more stops at Tasmania's beautiful coastline. Highlights include a visit to the Josef Chromy Vineyard, hiking through the Strzelecki National Park on Flinders Island, a gourmet lunch and dairy tour on King Island, and more than two days exploring the rarely-visited world heritage wilderness of Port Davey.



ITINERARY

Note:

The below itinerary is indicative. No two cruises with Coral Expeditions will be the same, with each expedition crafted by our experienced Masters and Expedition Leaders. Throughout the expedition we may make changes to the itinerary as necessary to maximise your expeditionary experience. Allowances may be made for seasonal variations, weather, tidal conditions and any other event that may affect the operation of the vessel. Coral Expeditions suggests that you do not arrive on the day of embarkation or depart on the day of disembarkation due to any changes that may occur in scheduling.



The Small Cruise Ship Collection

www.small-cruise-ships.com

small-cruise-ships.com

info@small-cruise-ships.com

DAY 1: DEPART HOBART

Board in Hobart at 4:00pm for a 8:00pm departure. Enjoy the Captain's welcome drinks as we cruise down the Derwent River and into the D'entrecasteaux Channel

FORTESCUE BAY & TASMAN PENINSULA

Gaze up at the 300 metre sea cliffs of Tasman National Park, the highest in the Southern Hemisphere, from a perfect position at sea. An area of huge natural diversity, it is possible to find Australian Fur Seals "hauling out" on the rocky shore at Tasman Island. Visit Fortescue Bay, hike the coastal Tasman Trail and kayak in Canoe Bay.

MARIA ISLAND

The historic ruins and rugged cliffs of Maria Island National Park are home to diverse wildlife that includes Forester Kangaroos, Bennetts Wallabies, and wombats. Walk to historic Darlington Settlement, explore the ancient seabeds of the Fossil Cliffs, and marvel at the sandstone formations of the Painted Cliffs.

FREYCINET PENINSULA

Wineglass Bay Tasmania with Coral Expeditions At the Freycinet Peninsula, see the pink granite formations of the Hazard Mountains, and the sweeping bays fringed by eucalypt. Join a guided hike to the Wineglass Bay beach - one of the best

beaches in the world. Witness fur seals lounging on the rocks at the Ile des Phoques.

FLINDERS ISLAND & THE FURNEAUX GROUP

Visit wild and rugged Flinders Island, and marvel at the pink and gray granite mountain ranges of Strzelecki National Park. Explore beautiful Trousers Point beach, with the possibility of enjoying two of Tasmania's Great Short Walks at Trousers Point and Castle Rock. Visit seaside townships, discover the sad history of Wybalenna Settlement, and see relics of Flinders maritime past at the Furneaux Museum.

KENT ISLAND GROUP

Weather permitting we visit the Kent Group of islands, Tasmania's northernmost National Park and a marine protected area. These islands are the remains of a land bridge that once connected Tasmania with main land Australia over 10,000 years ago. The waters of Kent Island are crystal clear, with the highest diversity of fish species in Australia. On Deal Island we find the highest lighthouse in Australia, standing 305 metres above sea level, which is manned by volunteer caretakers.

TAMAR RIVER & LAUNCESTON

Spend two days cruising the scenic Tamar River - which despite its name is actually a tidal estuary over its entire length. Formed by the confluence of the North and South Esk rivers at Launceston, the river's banks are peppered with scenic reserves,



The Small Cruise Ship Collection

www.small-cruise-ships.com

small-cruise-ships.com

info@small-cruise-ships.com

historical properties and notable vineyards. We berth overnight in Launceston, with an excursion to Josef Chromy Vineyard and time to explore the surrounds.

STANLEY

Visit the charming seaside village of Stanley, steeped in history and famous for its delectable seafood. Make the climb or chairlift up the Stanley's iconic landmark 'The Nut', the remains of an ancient volcanic plug, for spectacular 360 degree view. Later amble past the well-preserved colonial buildings and perhaps sample some of Stanley's world famous fish and chips.

KING ISLAND

King Island is known for its fine local produce, featured in the finest restaurants all over Australia. Situated at the western entrance to the Bass Strait, its rugged coastline has been the site of over 60 known shipwrecks. Tour the island with knowledgeable local guides and learn about the island's colourful history and current day industry. Sample a brie at the King Island Dairy tasting room, and enjoy a gourmet lunch, with a chance to sample King Island scotch steak and locally caught crayfish.

WEST COAST EXPEDITION STOP

Home to striking mountain ranges, ancient pines and untamed rivers, the wild west coast is the heart of Tasmania's wilderness and a true frontier. Take in the dramatic scenery during a day of

cruising. Weather permitting, we may make a landing on this truly remote coastline.

PORT DAVEY

A marine reserve, and part of the Tasmanian Wilderness World Heritage Area, Port Davey is truly spectacular. Enjoy the unforgettable experience of kayaking in Bramble Cove, and explore Melaleuca, along with hiking and bird-watching. We will spend 2.5 days here, and upon departure we will also cruise past the remote south coast islands of Maatsuyker, home to Australia's most southerly lighthouse.

ADVENTURE BAY, BRUNY ISLAND

Experience the rugged beauty of Fluted Cape as you walk along the sheer coastal cliffs. Learn about the rich maritime history of Adventure Bay, and explore the history of old whaling stations on the way to Grassy Point.

DAY 17: ARRIVE HOBART

Disembark in Hobart at 8:00am A post cruise transfer to city or airport is included.

Please Note:

The itinerary is indicative.



The Small Cruise Ship Collection

www.small-cruise-ships.com

small-cruise-ships.com

info@small-cruise-ships.com

YOUR SHIP: CORAL DISCOVERER

YOUR SHIP: Coral Discoverer

VESSEL TYPE:

LENGTH:

PASSENGER CAPACITY:

BUILT/REFURBISHED:

Yacht-like Coral Discoverer set a new benchmark standard of sophistication in expedition cruising when she was constructed by us in 2005. Coral Discoverer sailed on pioneering expeditions through Papua New Guinea, the islands of the South Pacific, Vanuatu, New Zealand, West Papua, and the Spice Islands. She led explorations into remote areas, focusing on destinations that were largely inaccessible to larger cruise ships. Coral Discoverer is exceptionally nimble and maneuverable, with a shallow draught to get up close to destinations, ocean views from all public spaces, an expansive open-air sun deck, all outside-facing staterooms, and state-of-the-art tools for exploration including the Xplorer, zodiacs, a glass-bottom boat, and kayaks. A full refurbishment in 2018 saw the addition of private balconies, the much-loved Xplorer sundeck bar, and all new furnishings throughout the ship. Comfortable, reliable, and intimately scaled, Coral Discoverer now conducts expeditions across Australia's coast - Tasmania, Cape York and Arnhem Land and the Kimberley. Australian flagged and staffed by an Australian and New Zealand crew, your experience aboard Coral Discoverer will be memorable. Onboard Accommodation Onboard accommodation comprises 36 spacious modern

staterooms. You can select from Bridge, Promenade or Main Deck staterooms offering a choice of twin through to junior king-size doubles. All staterooms have an ocean view, en-suite facilities, settee, large wardrobe, desk, luggage storage, individual air-conditioning control, and are serviced daily. Onboard Facilities What you would expect of a much larger cruise ship: Large sundeck Spa Pool Guest computer Comprehensive reference library Phone and fax facilities Lecture lounge with large plasma screen Limited laundry facilities Two fully stocked cocktail bars Boutique and dive shop Air-conditioned public areas Coral Discoverer is equipped with the latest technology active stabilizers and is fitted with state-of-the-art safety and navigational equipment and is the only Australian passenger ship registered with full SOLAS compliance allowing opportunities to explore a multitude of international voyages. Dining All meals during the cruise are included. Breakfast and lunch are served in the Dining Room located on the Main Deck and are buffet-style while dinner is table d'hote. Coffee and tea is available 24 hours. Standard hours are breakfast from 7:00-8:30am, lunch at 12:30pm and dinner at 7:30pm however meal times may vary according to the day's activities. Meal times will be advised in the onboard daily bulletins. Excursion Boats And Zodiacs The "Xplorer" is a specially designed aluminium excursion vessel used for the majority of our excursions. This vessel has high horsepower engines and will accommodate all passengers at one time. The "Xplorer" will be used for landings and for extensive exploration of rivers and tributaries. For your added convenience and comfort, the "Xplorer" is equipped with an awning and toilet. We

The Small Cruise Ship Collection

www.small-cruise-ships.com

01432 507 280 (within UK)

info@small-cruise-ships.com | small-cruise-ships.com



The Small Cruise Ship Collection

www.small-cruise-ships.com

small-cruise-ships.com

info@small-cruise-ships.com

also carry two inflatable landing craft (Zodiacs). Designed for expedition work, these large and heavy-duty inflatables are extremely safe. Separate air compartments retain a large reserve of buoyancy even if the boats damaged. The flat bottom design permits these crafts to land directly onto the beaches. Expect nonetheless to wade through shallow water to reach the shore. See photo



below (right)



The Small Cruise Ship Collection

www.small-cruise-ships.com

01432 507 280 (within UK)

info@small-cruise-ships.com | small-cruise-ships.com

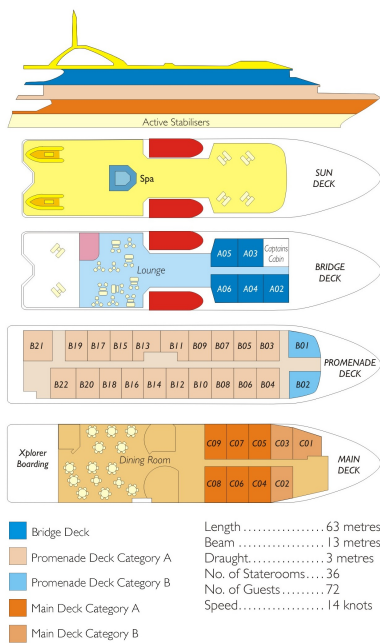
The Small Cruise Ship Collection

www.small-cruise-ships.com

small-cruise-ships.com

info@small-cruise-ships.com

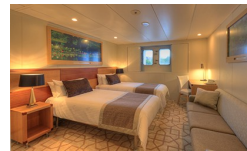
INSIDE YOUR SHIP



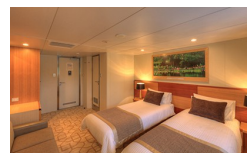
Bridge Deck Balcony



Main Deck A



Main Deck B



Promenade A



Promenade B





The Small Cruise Ship Collection

www.small-cruise-ships.com

small-cruise-ships.com

info@small-cruise-ships.com

PRICING

02-Jan-2025 to 18-Jan-2025

Bridge Deck Balcony	£10285 GBP pp
Promenade A	£9526 GBP pp
Main Deck B	£7342 GBP pp
Promenade B	£8798 GBP pp
Main Deck A	£8018 GBP pp

27-Feb-2025 to 15-Mar-2025

Promenade A	£9526 GBP pp
Bridge Deck Balcony	£10285 GBP pp
Promenade B	£8798 GBP pp
Main Deck A	£8018 GBP pp
Main Deck B	£7342 GBP pp