

# The Small Cruise Ship Collection

www.small-cruise-ships.com

small-cruise-ships.com

info@small-cruise-ships.com

## CLASSIC ANTARCTICA 2022-23 SEASON ABOARD USHUAIA

Our Classic Antarctic adventure cruises on board the USHUAIA offer the ultimate introduction to the White Continent. Embarking and disembarking in the port of Ushuaia, they include many of the wildlife and scenic highlights of the Antarctic Peninsula and the South Shetland Islands. You will often make two landings a day via our fleet of zodiac craft. Visiting Antarctica, truly the last pristine region of the world, in the southern summer is a rare and unique experience, surrounded by spectacular scenery and ice-filled channels. The constantly changing weather, scenery and colors provide marvelous opportunities for photographers and will leave you awestruck and sometimes overwhelmed. Our itineraries are expertly planned to take best advantage of the amazing wildlife and spectacular scenery during each time of the Antarctic season. Your Expedition Leader and his team takes you to remote places only visited by few people before. Amazingly busy penguin colonies, spectacular variety of seabirds, abundance of seals and magnificent whales await you, all set in a breathtaking scenery of imposing mountain ranges, ice-filled channels, tabular and beautifully shaped icebergs and glaciers. Please note: some departures are longer and will offer an extra day in the area of the Antarctic Peninsula and South Shetland Islands.



### ITINERARY

Day 1: Depart from Ushuaia

The Small Cruise Ship Collection  
www.small-cruise-ships.com

01432 507 280 (within UK)

info@small-cruise-ships.com | small-cruise-ships.com



## The Small Cruise Ship Collection

[www.small-cruise-ships.com](http://www.small-cruise-ships.com)

[small-cruise-ships.com](http://small-cruise-ships.com)

[info@small-cruise-ships.com](mailto:info@small-cruise-ships.com)

Embark the USHUAIA in the afternoon and meet your expedition and lecture staff. After you have settled into your cabins we sail along the famous Beagle Channel and the scenic Mackinlay Pass.

### Day 2 & 3: Crossing the Drake Passage

Named after the renowned explorer, Sir Francis Drake, who sailed these waters in 1578, the Drake Passage also marks the Antarctic Convergence, a biological barrier where cold polar water sinks beneath the warmer northern waters. This creates a great upwelling of nutrients, which sustains the biodiversity of this region. The Drake Passage also marks the northern limit of many Antarctic seabirds. As we sail across the passage, Antarpoly Expeditions' lecturers will be out with you on deck to help in the identification of an amazing variety of seabirds, including many albatrosses, which follow in our wake. The USHUAIA's open bridge policy allows you to join our officers on the bridge and learn about navigation, watch for whales, and enjoy the view. A full program of lectures will be offered as well. The first sightings of icebergs and snow-capped mountains indicate that we have reached the South Shetland Islands, a group of twenty islands and islets first sighted in February 1819 by Capt. William Smith of the brig Williams. With favorable conditions in the Drake Passage our lecturers and naturalists will accompany you ashore as you experience your first encounter with the penguins and seals on Day 3.

### Day 4 to 7: Exploring the Antarctic Peninsula and the South Shetland Islands

The South Shetland Islands are a haven for wildlife. Vast penguin rookeries, beaches ruled by Antarctic fur seals and Southern elephant seals make every day spent in this amazing island group unforgettable. Sailing through the narrow passage into the flooded caldera of Deception Island is breathtaking.

King George Island, the largest of the South Shetland Islands, features colonies of nesting Gentoo and Chinstrap Penguins, Kelp Gulls, Blue-eyed Cormorants, Antarctic Terns and Southern Giant Petrels and is home to scientific bases of many different countries. Chinstrap and Gentoo Penguins as well as elephant seals await you at Livingston Island. The Antarctic Peninsula's remarkable history will provide you with a type of excitement often only associated with the early explorers. You will have plenty of time to explore its amazing scenery, a pristine wilderness of snow, ice, mountains and waterways, and an incredible wide variety of wildlife. Apart from penguins and seabirds you are very likely to see Weddell, crabeater and leopard seals as well as Minke, killer (orca) and humpback whales at close range. We hope to navigate some of the most beautiful waterways (depending on the ice conditions): the Gerlache Strait, the Neumayer Channel, and the Lemaire Channel, the latter are narrow passages between towering rock faces and spectacular glaciers. We plan to make at least two landings per day and possible landing sites may include: Paradise Bay is perhaps the most aptly named place in the world and we attempt a landing on the continent proper. After negotiating the iceberg-strewn waters of the Antarctic Sound, we hope to visit the bustling Adélie Penguin (over 100,000 pairs breed here) and Blue-eyed Cormorant colonies on Paulet Island. The Nordenskjöld expedition built a stone survival hut here in 1903. Today its ruins have been taken over by nesting penguins. Further exploration may take you to the Melchior Island group, Cuverville Island, Portal Point, Neko Harbour, Pléneau Island and if ice conditions permit, to Petermann Island for a visit to the southernmost colony of Gentoo Penguins.

### Day 8 & 9: At Sea crossing the Drake Passage, northbound

The Small Cruise Ship Collection

[www.small-cruise-ships.com](http://www.small-cruise-ships.com)

01432 507 280 (within UK)

[info@small-cruise-ships.com](mailto:info@small-cruise-ships.com) | [small-cruise-ships.com](http://small-cruise-ships.com)



We leave Antarctica and head north across the Drake Passage. Join our lecturers and naturalists on deck as we search for seabirds and whales and enjoy some final lectures. Take the chance to relax and reflect on the fascinating adventures of the past days on the way back to Ushuaia.

**Day 10: Arrival in Ushuaia**

We arrive at the port of Ushuaia in the early morning and disembark the USHUAIA after breakfast. Please note: The above itinerary is a guide only. Our exact route and program will vary to take best advantage of local weather and ice conditions and opportunities to view wildlife. Changes will be made by the Captain and/or Expedition Leader to facilitate the best results from the prevailing conditions. A daily program sheet will be issued on board. Flexibility is the key to success.

**Please Note:**

Itineraries are subject to change.



# The Small Cruise Ship Collection

[www.small-cruise-ships.com](http://www.small-cruise-ships.com)

[small-cruise-ships.com](http://small-cruise-ships.com)

[info@small-cruise-ships.com](mailto:info@small-cruise-ships.com)

## YOUR SHIP: USHUAIA

**YOUR SHIP:** Ushuaia

**VESSEL TYPE:**

**LENGTH:**

**PASSENGER CAPACITY:**

**BUILT/REFURBISHED:**

Originally built for the United States agency NOAA (National Oceanic & Atmospheric Administration), the MV USHUAIA has been refurbished to accommodate a maximum of 84 passengers in 41 comfortable twin cabins and suites. The ice-strengthened polar vessel MV USHUAIA is very well appointed and provides ample deck space and an open bridge policy. The full complement of inflatable landing craft ensures superb landings and wildlife viewing opportunities on the otherwise inaccessible coastline. All cabins include ample storage space. Public areas feature a large dining room (one sitting), an observation lounge and bar, a conference room with modern multimedia equipment, a well-stocked library, a changing room and a small infirmary. Our expert captain, officers and crew are highly experienced in Antarctic navigation and have a great love of nature. We provide a specialist team of international expedition leaders and lecturers, all extremely knowledgeable, enthusiastic, helpful and dedicated to the protection of the environment. Our chefs prepare excellent cuisine including many local specialties and the bar is well-stocked with carefully selected wines and spirits.



The Small Cruise Ship Collection  
[www.small-cruise-ships.com](http://www.small-cruise-ships.com)

01432 507 280 (within UK)

[info@small-cruise-ships.com](mailto:info@small-cruise-ships.com) | [small-cruise-ships.com](http://small-cruise-ships.com)

# The Small Cruise Ship Collection

www.small-cruise-ships.com

small-cruise-ships.com

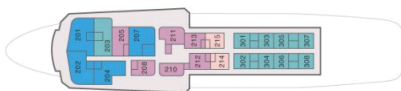
info@small-cruise-ships.com

## INSIDE YOUR SHIP

Bridge Deck H

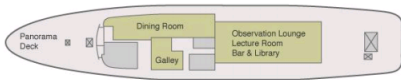


Upper Deck G



- 4 Suites
- 6 Premier twin private cabins
- 2 Premier single private cabins
- 9 Superior twin private cabins

Main Deck F



Deck E



- 10 Standard twin semi-private cabins
- 11 Standard Plus twin private cabins
- Changing room
- 2 Standard Plus triple private cabins

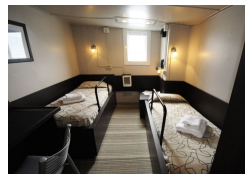
Premier Single



Premier Single ■



Premier Twin



Premier Twin ■



Standard Plus Triple

Standard Plus Triple ■

Standard Plus Twin

Standard Plus Twin ■

Standard Twin

Standard Twin ■

Suite Twin

Superior Twin



# The Small Cruise Ship Collection

www.small-cruise-ships.com

small-cruise-ships.com

info@small-cruise-ships.com

## PRICING

### 03-Nov-2024 to 12-Nov-2024

Standard Plus Triple	£3839 GBP pp
Superior Twin	£6596 GBP pp
Standard Plus Twin	£5245 GBP pp
Suite Twin	£6936 GBP pp
Premier Single	£7481 GBP pp
Premier Twin	£6233 GBP pp
Standard Twin	£4115 GBP pp

### 12-Nov-2024 to 22-Nov-2024

Superior Twin	£8626 GBP pp
Suite Twin	£9069 GBP pp
Standard Twin	£5387 GBP pp
Standard Plus Twin	£6849 GBP pp
Premier Twin	£8144 GBP pp
Premier Single	£9764 GBP pp
Standard Plus Triple	£5032 GBP pp

### 22-Nov-2024 to 01-Dec-2024

Suite Twin	£8160 GBP pp
Superior Twin	£7765 GBP pp
Premier Single	£8784 GBP pp
Standard Plus Twin	£6162 GBP pp
Premier Twin	£7331 GBP pp
Standard Twin	£4850 GBP pp
Standard Plus Triple	£4526 GBP pp

### 01-Dec-2024 to 10-Dec-2024

Suite Twin	£8160 GBP pp
Superior Twin	£7765 GBP pp
Premier Single	£8784 GBP pp
Standard Plus Twin	£6162 GBP pp
Standard Twin	£4850 GBP pp
Standard Plus Triple	£4526 GBP pp
Premier Twin	£7331 GBP pp

### 10-Dec-2024 to 19-Dec-2024

Standard Twin	£5387 GBP pp
Premier Twin	£8144 GBP pp
Superior Twin	£8626 GBP pp
Standard Plus Triple	£5032 GBP pp
Suite Twin	£9069 GBP pp
Standard Plus Twin	£6849 GBP pp
Premier Single	£9764 GBP pp

# The Small Cruise Ship Collection

www.small-cruise-ships.com

small-cruise-ships.com

info@small-cruise-ships.com

## PRICING

### 20-Dec-2024 to 29-Dec-2024

Standard Plus Triple	£5695 GBP pp
Superior Twin	£9298 GBP pp
Premier Twin	£8800 GBP pp
Standard Plus Twin	£7378 GBP pp
Premier Single	£10562 GBP pp
Standard Twin	£6090 GBP pp
Suite Twin	£9780 GBP pp

### 18-Jan-2025 to 27-Jan-2025

Superior Twin	£9298 GBP pp
Standard Plus Twin	£7378 GBP pp
Standard Twin	£6090 GBP pp
Premier Single	£10562 GBP pp
Suite Twin	£9780 GBP pp
Premier Twin	£8800 GBP pp
Standard Plus Triple	£5695 GBP pp

### 29-Dec-2024 to 08-Jan-2025

Standard Plus Twin	£8200 GBP pp
Standard Plus Triple	£6312 GBP pp
Premier Single	£11739 GBP pp
Premier Twin	£9780 GBP pp
Suite Twin	£10862 GBP pp
Superior Twin	£10333 GBP pp
Standard Twin	£6770 GBP pp

### 26-Feb-2025 to 07-Mar-2025

Premier Twin	£8468 GBP pp
Superior Twin	£8966 GBP pp
Standard Twin	£5664 GBP pp
Standard Plus Triple	£5293 GBP pp
Suite Twin	£9424 GBP pp
Standard Plus Twin	£7117 GBP pp
Premier Single	£10159 GBP pp

### 08-Jan-2025 to 17-Jan-2025

Superior Twin	£10333 GBP pp
Standard Twin	£6770 GBP pp
Premier Single	£11739 GBP pp
Premier Twin	£9780 GBP pp
Standard Plus Triple	£6312 GBP pp
Suite Twin	£10862 GBP pp
Standard Plus Twin	£8200 GBP pp

# The Small Cruise Ship Collection

www.small-cruise-ships.com

small-cruise-ships.com

info@small-cruise-ships.com

## PRICING

### 08-Mar-2025 to 17-Mar-2025

Standard Plus Triple	£4526 GBP pp
Premier Twin	£7331 GBP pp
Standard Plus Twin	£6162 GBP pp
Superior Twin	£7765 GBP pp
Premier Single	£8784 GBP pp
Standard Twin	£4850 GBP pp
Suite Twin	£8160 GBP pp

### 17-Mar-2025 to 26-Mar-2025

Superior Twin	£7765 GBP pp
Premier Twin	£7331 GBP pp
Standard Plus Twin	£6162 GBP pp
Standard Twin	£4850 GBP pp
Standard Plus Triple	£4526 GBP pp
Suite Twin	£8160 GBP pp
Premier Single	£8784 GBP pp

### 26-Mar-2025 to 04-Apr-2025

Premier Single	£8784 GBP pp
Standard Plus Triple	£4526 GBP pp
Premier Twin	£7331 GBP pp
Superior Twin	£7765 GBP pp
Standard Plus Twin	£6162 GBP pp
Standard Twin	£4850 GBP pp
Suite Twin	£8160 GBP pp

### 03-Nov-2025 to 12-Nov-2025

Standard Plus Triple	£4105 GBP pp
Premier Single	£7579 GBP pp
Standard Plus Twin	£5365 GBP pp
Standard Twin	£4495 GBP pp
Suite Twin	£7419 GBP pp
Superior Twin	£6945 GBP pp
Premier Twin	£6315 GBP pp

### 12-Nov-2025 to 21-Nov-2025

Premier Single	£9869 GBP pp
Suite Twin	£9709 GBP pp
Superior Twin	£9079 GBP pp
Premier Twin	£8289 GBP pp
Standard Plus Twin	£7025 GBP pp
Standard Twin	£5839 GBP pp
Standard Plus Triple	£5365 GBP pp



# The Small Cruise Ship Collection

www.small-cruise-ships.com

small-cruise-ships.com

info@small-cruise-ships.com

## PRICING

### 22-Nov-2025 to 01-Dec-2025

Suite Twin	£8785 GBP pp
Premier Single	£8945 GBP pp
Superior Twin	£8209 GBP pp
Premier Twin	£7469 GBP pp
Standard Twin	£5319 GBP pp
Standard Plus Triple	£4835 GBP pp
Standard Plus Twin	£6315 GBP pp

### 20-Dec-2025 to 29-Dec-2025

Premier Single	£10815 GBP pp
Suite Twin	£10635 GBP pp
Superior Twin	£9939 GBP pp
Premier Twin	£9035 GBP pp
Standard Plus Twin	£7729 GBP pp
Standard Twin	£6315 GBP pp
Standard Plus Triple	£5839 GBP pp

### 01-Dec-2025 to 10-Dec-2025

Suite Twin	£9709 GBP pp
Premier Single	£9869 GBP pp
Superior Twin	£9079 GBP pp
Premier Twin	£8289 GBP pp
Standard Plus Twin	£7025 GBP pp
Standard Twin	£5839 GBP pp
Standard Plus Triple	£5365 GBP pp

### 29-Dec-2025 to 07-Jan-2026

Suite Twin	£10635 GBP pp
Premier Single	£10815 GBP pp
Superior Twin	£9939 GBP pp
Premier Twin	£9035 GBP pp
Standard Plus Twin	£7729 GBP pp
Standard Twin	£6315 GBP pp
Standard Plus Triple	£5839 GBP pp

### 11-Dec-2025 to 20-Dec-2025

Premier Single	£8945 GBP pp
Suite Twin	£8785 GBP pp
Superior Twin	£8209 GBP pp
Premier Twin	£7469 GBP pp
Standard Plus Twin	£6315 GBP pp
Standard Twin	£5319 GBP pp
Standard Plus Triple	£4835 GBP pp

# The Small Cruise Ship Collection

www.small-cruise-ships.com

small-cruise-ships.com

info@small-cruise-ships.com

## PRICING

### 07-Jan-2026 to 16-Jan-2026

Premier Single	£10815 GBP pp
Suite Twin	£10635 GBP pp
Superior Twin	£9939 GBP pp
Premier Twin	£9035 GBP pp
Standard Plus Twin	£7729 GBP pp
Standard Twin	£6315 GBP pp
Standard Plus Triple	£5839 GBP pp

### 16-Jan-2026 to 25-Jan-2026

Premier Single	£10815 GBP pp
Suite Twin	£10635 GBP pp
Superior Twin	£9939 GBP pp
Premier Twin	£9035 GBP pp
Standard Plus Twin	£7729 GBP pp
Standard Twin	£6315 GBP pp
Standard Plus Triple	£5839 GBP pp

### 25-Jan-2026 to 03-Feb-2026

Suite Twin	£10635 GBP pp
Premier Single	£10815 GBP pp
Superior Twin	£9939 GBP pp
Premier Twin	£9035 GBP pp
Standard Plus Twin	£7729 GBP pp
Standard Twin	£6315 GBP pp
Standard Plus Triple	£5839 GBP pp

### 25-Feb-2026 to 06-Mar-2026

Standard Plus Twin	£7389 GBP pp
Premier Single	£10359 GBP pp
Suite Twin	£10175 GBP pp
Superior Twin	£9505 GBP pp
Premier Twin	£8645 GBP pp
Standard Twin	£6155 GBP pp
Standard Plus Triple	£5525 GBP pp

### 07-Mar-2026 to 16-Mar-2026

Premier Single	£9869 GBP pp
Suite Twin	£9709 GBP pp
Superior Twin	£9079 GBP pp
Premier Twin	£8289 GBP pp
Standard Plus Twin	£7025 GBP pp
Standard Twin	£5839 GBP pp
Standard Plus Triple	£5365 GBP pp



# The Small Cruise Ship Collection

[www.small-cruise-ships.com](http://www.small-cruise-ships.com)

[small-cruise-ships.com](http://small-cruise-ships.com)

[info@small-cruise-ships.com](mailto:info@small-cruise-ships.com)

## PRICING

### 17-Mar-2026 to 26-Mar-2026

Premier Single	£8945 GBP pp
Suite Twin	£8785 GBP pp
Superior Twin	£8209 GBP pp
Premier Twin	£7469 GBP pp
Standard Plus Twin	£6315 GBP pp
Standard Twin	£5319 GBP pp
Standard Plus Triple	£4835 GBP pp

### 26-Mar-2026 to 04-Apr-2026

Suite Twin	£8785 GBP pp
Standard Plus Triple	£4835 GBP pp
Premier Single	£8945 GBP pp
Superior Twin	£8209 GBP pp
Premier Twin	£7469 GBP pp
Standard Plus Twin	£6315 GBP pp
Standard Twin	£5319 GBP pp