

The Small Cruise Ship Collection

www.small-cruise-ships.com

small-cruise-ships.com

info@small-cruise-ships.com

CROATIA BIKE CRUISE

This guided cycling tour in Dalmatia starts and ends in Split exploring amazing coastlines, medieval towns, old villages and picturesque bays. Highlights include great beaches, vineyards, pine woods, cycling across the historic islands and exploring Mljet National Park. Croatia is a land of stunning islands, rich history, Mediterranean vegetation and a mild climate. Without doubt, the best way to explore it is by bike.



ITINERARY

Saturday. Split -Supetar -Pu iš a

Bike Course:-BIKE: Supetar -Pu iš a Length: 25 km Total ascent: 380 m Highest point: 90 m Surface: 100% paved road Difficulty level: 2/5 Arrival in Split and check-in from 11:00. Departure at 13:00 followed by lunch on board on the journey to the island of Bra . Upon arrival in Supetar, cycle tour through the coastal road to the northern part of the island. Pass by the fishing villages Splitska and Postira and arrive in one of the most beautiful small settlements in Europe - Pu iš a. Free afternoon for sightseeing of this charming village, well known for its long stonemason tradition. Overnight in Pu iš a.

Sunday. Pu iš a -Pokrivenik/Jelsa -Su uraj - Ku ište



The Small Cruise Ship Collection

www.small-cruise-ships.com

small-cruise-ships.com

info@small-cruise-ships.com

Bike Course: Pokrivenik -Su uraj Length: 32 km Total ascent: 450 m Highest point: 350 m Surface: 100 % paved Difficulty level: 3/5 Breakfast and morning cruise towards the longest Croatian island - Hvar with the view of Biokovo mountain. The cycling tour starts in a small picturesque bay Pokrivenik. It starts with ascending to the highest point of the route and then descends to the eastern point of Hvar island - Su uraj, where the ship will be waiting. After lunch on board, cruise towards the second biggest Croatian peninsula - Pelješac and a charming settlement Ku ište. Captain's dinner onboard (included on Premium categories). Overnight in Ku ište.

Monday. Ku ište -Trstenik

Bike Course: Ku ište -Trstenik Length: 30 km Total ascent: 800 m Highest point: 540 m Surface: 100% paved Difficulty level: 4/5 Today's ride could be called the wine-panoramic route. After breakfast, start riding towards Orebi, the city of seafarers and captains. The first few kilometres of ascending and then descending with the unique viewpoints of the Korula archipelago. After Orebi, ascend to the vineyard area with the most famous varieties of Croatian wine. Cross the tunnel Dinga to the south side of Pelješac and continue riding through vineyards to Trstenik. Overnight in Trstenik.

Tuesday. Trstenik - Mljet -Korula

Bike Course: National park Mljet Length: 18 km Total ascent: 120 m Highest point: 45 m Surface: 80 % paved, 20% macadam Difficulty level: 1/5 Cruise during breakfast from

Trstenik to Mljet island, the lush green island also known as Honey-island. Mljet National Park (entrance fee to be paid on the spot) is a beautiful area of unique charm, featuring two connected saltwater lakes, lush flora, a unique appearance of indented coastline, cliffs and numerous islets as well as always green plants of the surrounding hills. Cycle around the saltwater lake, inside which there is another island with the Benedictine monastery from the 12th century. Refreshment in saltwater lakes and return to the vessel for lunch on board. Afternoon cruise towards Korula and upon arrival, time at leisure to explore the town of Marco Polo. Overnight in Korula.

Wednesday. Korula -Vela Luka

Bike Course: Korula -Pupnat -Smokvica -Prižba -Blato -Vela Luka Length: 55 km Total ascent: 750 m Highest point: 340 m Surface: 100 % paved Difficulty level: 4/5 After breakfast, start with the longest route of the week passing through the entire island of Korula. Ascend to Žrnovo village and then to the oldest settlement on the island - Pupnat, the highest point of the route. Descend to the south side of Korula and road ride between one of the most beautiful bays of the island with steep cliffs above it. Continue the ride through numerous olive groves and vineyards of one of the most famous grape varieties, Pošip. Short break in the charming village of Smokvica. Descend to the sea and refresh on one of the numerous hidden pebbly beaches. Ascend towards the viewpoint above town Blato and finally descend towards Vela Luka. Dinner on board and overnight in Vela Luka.

Thursday. Vela Luka -Hvar -Stari Grad

The Small Cruise Ship Collection

www.small-cruise-ships.com

01432 507 280 (within UK)

info@small-cruise-ships.com | small-cruise-ships.com



The Small Cruise Ship Collection

www.small-cruise-ships.com

small-cruise-ships.com

info@small-cruise-ships.com

Saturday - Split

Bike Course: 1. Hvar - Stari Grad 2. Stari Grad - Jelsa - Vrboska - Stari Grad
BIKE 1: Length: 23 km Total ascent: 450m Highest point: 410m Surface: 100% paved
Difficulty level: 3/5 BIKE 2: Length: 22 km Total ascent: 110m Highest point: 85m Surface: 85% paved 15% macadam
Difficulty level: 1/5 Early morning cruise from Vela Luka to the town of Hvar, with breakfast on board. Short sightseeing of Hvar, a fairy tale city with great architecture, beautiful nature and a mild climate. Cycle from Hvar to the other side of the island - Stari Grad. Pass through numerous lavender fields and enjoy the view towards neighbouring islands and the mainland. Lunch on board in Stari Grad. Easy afternoon ride up to two Hvar's pearls - Jelsa and Vrboska and through Stari Grad Plain where the ancient Greek land division has been preserved to these days with the system of roads and plots equally divided. Overnight in Stari Grad.

Disembarkation in Split. Breakfast followed by check out at 9:00 am.

Friday. Stari Grad - Stomorska - Split

Bike Course: Stomorska - Maslinica Length: 36 km Total ascent: 450 m Highest point: 135 m Surface: 100 % paved Difficulty level: 2/5 The last day starts with a morning cruise from Stari Grad to the island of Šolta. After breakfast, start cycling from Stomorska to the highest point of the island - Gornje Selo, enjoying the views on both sides of the island and the scents of Mediterranean plants. Continue to Maslinica on the west part of the island. Short break and return to Stomorska. Lunch on board and cruise towards Split. Free afternoon for sightseeing and enjoying the Diocletian's city. Overnight in Split.

The Small Cruise Ship Collection

www.small-cruise-ships.com

01432 507 280 (within UK)

info@small-cruise-ships.com | small-cruise-ships.com

The Small Cruise Ship Collection

www.small-cruise-ships.com

small-cruise-ships.com

info@small-cruise-ships.com

YOUR SHIP: CROATIAN 'COMFORT CLASS' CRUISER

YOUR SHIP: Croatian 'comfort class' cruiser

VESSEL TYPE:

LENGTH:

PASSENGER CAPACITY:

BUILT/REFURBISHED:

These 'comfort' cruises are run on a small variety of vessels, all of very similar standard, but the actual vessel isn't usually confirmed until 2 weeks before the cruise. All of the vessels are very comfortable, and the cabins have airconditioning and en-suite bathrooms. All the vessels carry around 40 passengers (maximum). Steel hulled vessels with modern traditional look offer accommodation in air-conditioned, spacious en-suite cabins with double or twin beds, hair dryer and safety deposit box. Ships are from 29 to 35m in length with cabins 8 to 14m² in size. Included services: buffet breakfasts, three course lunches, Captain's dinner, English speaking tour manager on board, one guided tour, daily cabin service, mid-week fresh set of towels and bed linen, luggage handling. The images here are examples of these vessels, and their cabins and decks. Most vessels have a few triple cabins. These either have a double bed and a single bed, or sometimes a double and a single bunk.



The Small Cruise Ship Collection

www.small-cruise-ships.com

01432 507 280 (within UK)

info@small-cruise-ships.com | small-cruise-ships.com

The Small Cruise Ship Collection

www.small-cruise-ships.com

small-cruise-ships.com

info@small-cruise-ships.com

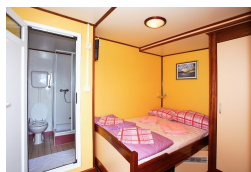
INSIDE YOUR SHIP

Below deck cabins



Below deck cabins

Main deck cabins



On deck or upper deck cabins



The Small Cruise Ship Collection

www.small-cruise-ships.com

small-cruise-ships.com

info@small-cruise-ships.com

PRICING

21-Sep-2024 to 28-Sep-2024

Below deck cabins £903 GBP pp

On deck or upper deck cabins £989 GBP pp

21-Sep-2024 to 28-Sep-2024

Below deck cabins £989 GBP pp

On deck or upper deck cabins £1205 GBP pp

28-Sep-2024 to 05-Oct-2024

Below deck cabins £903 GBP pp

Main deck cabins £989 GBP pp

05-Oct-2024 to 12-Oct-2024

Below deck cabins £731 GBP pp

Main deck cabins £860 GBP pp

12-Oct-2024 to 19-Oct-2024

Below deck cabins £731 GBP pp

Main deck cabins £860 GBP pp

24-May-2025 to 31-May-2025

Below deck cabins £775 GBP pp

Main deck cabins £905 GBP pp

ADDITIONAL CHARGES: Port taxes 60 EUR pp