



## CROSSING THE CIRCLE ABOARD SEAVENTURE

We chart a course through the Drake Passage and along the Antarctic Peninsula with the ambition of crossing the Antarctic Circle. The farther south we go, the more sea ice we are likely to encounter, along with incredible wildlife and awe-inspiring scenery. Should we arrive at 66°33'S, we'll join the small band of explorers that can claim they have made it this far south.



### ITINERARY

#### Day 1, Ushuaia:

No need to stress about missed connections or flight delays as you arrive with plenty of time to unwind and enjoy the beautiful Arakur Resort & Spa or spend time discovering the southernmost city in the world, Ushuaia.

#### Day 2, Ushuaia:

Explore the sights of Ushuaia such as the museums and Argentinean leather markets or continue relaxing at the hotel.



Attend the optional evening briefing for the opportunity to ask questions and meet some of your fellow travelers.

**Day 3, Embarkation:**

Spend your morning exploring Ushuaia or unwinding at the resort until our mid-afternoon transfer to the ship. Our Expedition Team and ship staff will greet you on board, followed by a safety and orientation briefing and Captain's welcome dinner.

**Day 4-5, Drake Passage:**

Join our Polar Experts as they teach you about everything Antarctic, from wildlife to history; participate in our renowned Citizen Science program; or sit back and take in this fabled journey while catching exciting glimpses of wildlife. Grab your binoculars to identify the many seabirds that follow the ship as we cross the Antarctic Convergence into Antarctic waters and noticeably cooler temperatures.

**Day 6, South Shetland Islands:**

The volcanic South Shetland Islands offer amazing abundance and beauty, so we'll hop into our inflatable Zodiac boats and spend as much time as possible exploring. Be prepared to marvel up close at nature's glory!

**Day 7-9, Antarctic Circle:**

Heading south across the Bransfield Strait, we sail towards the Antarctic Circle. From our most southern point (south of the Antarctic Circle), we'll start making our way back north, cruising through the narrow channels of the Antarctic Peninsula

**Day 10-12, Antarctic Peninsula:**

Heading north, we'll explore any number of picturesque bays and famed harbors, maneuvering through majestic channels as we travel the wildlife-rich waters. There are great opportunities to stop at several active scientific bases and historic landing sites as we spot numerous species of penguins, seals, and whales along the rugged coastlines and in the sea

**Day 13-14, Drake Passage:**

We leave this magical place and make our way north, once again crossing the legendary Drake Passage. We have one last hurrah as we celebrate the conclusion of our expedition with a special slideshow and a final meal together.

**Day 15, Ushuaia disembarkation:**

With huge smiles on weary, content faces, we disembark in the morning, letting you catch a flight to Buenos Aires or stay in Ushuaia for more sights and adventure.

**Please Note:**

This Itinerary is subject to change.



## The Small Cruise Ship Collection

[www.small-cruise-ships.com](http://www.small-cruise-ships.com)

[small-cruise-ships.com](http://small-cruise-ships.com)

[info@small-cruise-ships.com](mailto:info@small-cruise-ships.com)

### YOUR SHIP: SEAVENTURE

**YOUR SHIP:**

**Seaventure**

**VESSEL TYPE:**

**LENGTH:**

**PASSENGER CAPACITY:**

**BUILT/REFURBISHED:**

A WORLD-CLASS SMALL SHIP EXPERIENCE Seaventure features a 1-A Super ice class rating -- the highest ice class awarded to passenger vessels. This means that we will be able to explore coves, bays, and channels that would previously have been forbidden to us. The ship also offers a host of new activities. There's a sauna, a fitness center, a custom-built citizen science lab, and heated saltwater pool. There is more storage space, which is important because it means we can carry more equipment, so that more of our guests can participate in activities like kayaking, snowshoeing, and camping. The common areas are larger and beautifully appointed, and the ship has two. Ship Facilities: Two Elevators serving all passenger decks Library with computers Fitness Center and Sauna Heated saltwater swimming pool Citizen Science Laboratory All Staterooms Feature: Exterior views Sitting area with chairs or sofa and table Complimentary Mini-Bar Flat Screen TV Telephone Safe to store your valuables Independent temperature controls Luxury toiletries Hair dryer



The Small Cruise Ship Collection

[www.small-cruise-ships.com](http://www.small-cruise-ships.com)

**01432 507 280** (within UK)

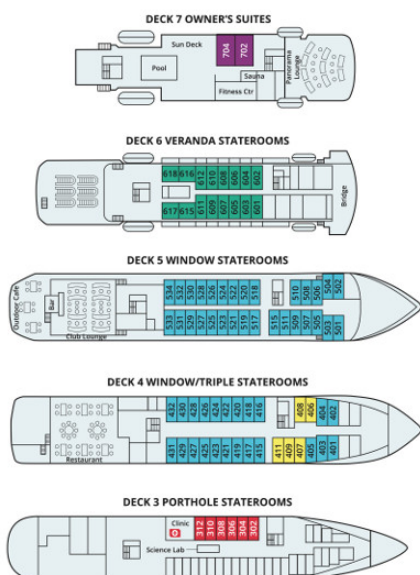
[info@small-cruise-ships.com](mailto:info@small-cruise-ships.com) | [small-cruise-ships.com](http://small-cruise-ships.com)



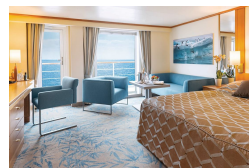
info@small-cruise-ships.com

## INSIDE YOUR SHIP

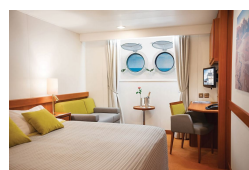
## MS SEAVENTURE



## Owners Suite



## Porthole Stateroom



### Triple Stateroom



Veranda Stateroom





## The Small Cruise Ship Collection

[www.small-cruise-ships.com](http://www.small-cruise-ships.com)



[small-cruise-ships.com](http://small-cruise-ships.com)

[info@small-cruise-ships.com](mailto:info@small-cruise-ships.com)

## PRICING

### 25-Jan-2025 to 08-Feb-2025

Porthole Stateroom	£13440 GBP pp
Veranda Stateroom	£17313 GBP pp
Owners Suite	£24235 GBP pp
Window Stateroom	£15057 GBP pp
Triple Stateroom	£11684 GBP pp

### 04-Feb-2026 to 17-Feb-2026

Owners Suite	£21294 GBP pp
Veranda Stateroom	£17744 GBP pp
Window Stateroom	£15434 GBP pp
Triple Stateroom	£11977 GBP pp
Porthole Stateroom	£13779 GBP pp



The Small Cruise Ship Collection

[www.small-cruise-ships.com](http://www.small-cruise-ships.com)

**01432 507 280** (within UK)

[info@small-cruise-ships.com](mailto:info@small-cruise-ships.com) | [small-cruise-ships.com](http://small-cruise-ships.com)