

The Small Cruise Ship Collection

www.small-cruise-ships.com

small-cruise-ships.com

info@small-cruise-ships.com

CRUISE SCOTT & SHACKLETON'S ANTARCTIC - ROSS SEA EXPEDITION

Embark on an extraordinary adventure to the seldom visited Ross Sea from New Zealand and walk in the footsteps of legendary polar explorers on this exciting expedition. Sailing from Dunedin in New Zealand on board Le Soleal, start in Campbell Island, part of New Zealand's Subantarctic Islands, and discover the island's spectacular endemic flora and fauna, including six species of albatross. While you enjoy some time at sea and take advantage of talks and lectures on board by your team of expedition guides, be prepared to reach the Ross Sea, the Southernmost sea on Earth. Alongside your expedition team, you will have the privilege of exploring this fascinating region and learn all about its history and natural environment, all in one of the most pristine, spectacular settings. Observe the largest Adelle penguin rookeries in the world, sail past gigantic icebergs and thundering glaciers during a zodiac excursion, or spot Weddell Seals as they relax or hunt on icefloes. You will have the opportunity to visit historic buildings including Sir Ernest Shackleton's hut at Cape Royds, and reflect on the heroic polar journeys of some of the world's most intrepid polar explorers. On your way back to New Zealand, enjoy some time on Australia's Macquarie Island, and its impressive colony of king penguins, as well as the Snares islands and their unique wildlife sanctuaries, before disembarking in Dunedin. A truly memorable adventure not many have the chance to experience!



ITINERARY

Day 1 DUNEDIN (26th January 2025)

Dunedin is New Zealand's oldest city and is often referred to as the Edinburgh of New Zealand. This city of the south, wears its Scottish heritage with pride. The city contains some of the best

The Small Cruise Ship Collection

www.small-cruise-ships.com

01432 507 280 (within UK)

info@small-cruise-ships.com | small-cruise-ships.com



The Small Cruise Ship Collection

www.small-cruise-ships.com

small-cruise-ships.com

info@small-cruise-ships.com

preserved Victorian and Edwardian architecture in the Southern Hemisphere. The Silverpeaks hinterland to the North West provides a picturesque backdrop and The Otago Peninsula, which lies within the city boundaries, has internationally renowned wildlife reserves, including the only mainland breeding colony of Northern Royal Albatross.

Day 2 AT SEA

During your day at sea, make the most of the many services and activities on board. Treat yourself to a moment of relaxation in the spa or stay in shape in the fitness centre. Depending on the season, let yourself be tempted by the swimming pool or a spot of sunbathing. This day without a port of call will also be an opportunity to enjoy the conferences or shows proposed on board, to do some shopping in the boutique or to meet the PONANT photographers in their dedicated space. As for lovers of the open sea, they will be able to visit the ship's upper deck to admire the spectacle of the waves and perhaps be lucky enough to observe marine species. A truly enchanted interlude, combining comfort, rest and entertainment.

Day 3 CAMPBELL ISLAND

Campbell Island is the most southerly of the five New Zealand subantarctic groups. Described by the English botanist Joseph Hooker as having a "flora display second to none outside the tropics." It is known for its megaherbs, herbaceous, perennial wildflowers characterised by their great size, with huge leaves and very colourful flowers, which have developed as an adaptation to the harsh weather conditions on the islands.

Campbell Island is also home to six species of albatross, and several critically endangered endemic birds including the Campbell Island teal and snipe. You will have the opportunity to undertake a guided walk on the Col Lyell Saddle boardwalk as well as undertake a zodiac tour around the coastline of Perseverance Harbour.

Days 4 - 6 AT SEA

During your day at sea, make the most of the many services and activities on board. Treat yourself to a moment of relaxation in the spa or stay in shape in the fitness centre. Depending on the season, let yourself be tempted by the swimming pool or a spot of sunbathing. This day without a port of call will also be an opportunity to enjoy the conferences or shows proposed on board, to do some shopping in the boutique or to meet the PONANT photographers in their dedicated space. As for lovers of the open sea, they will be able to visit the ship's upper deck to admire the spectacle of the waves and perhaps be lucky enough to observe marine species. A truly enchanted interlude, combining comfort, rest and entertainment.

Days 7 - 14 ROSS SEA REGION

The Ross Sea, the southernmost sea in the world, owes its name to Sir James Clark Ross, both a naturalist and a Royal Navy officer, who first explored the area in 1841 with HMS Erebus and HMS Terror. It is bounded on the east by Roosevelt Island and the Edward VII Peninsula in Mary Byrd Land, on the west by Ross Island and the coastal mountains of Victoria Land, and on the south by the Ross Ice Shelf, the largest ice shelf in

The Small Cruise Ship Collection

www.small-cruise-ships.com

01432 507 280 (within UK)

info@small-cruise-ships.com | small-cruise-ships.com



The Small Cruise Ship Collection

www.small-cruise-ships.com

small-cruise-ships.com

info@small-cruise-ships.com

Antarctica located some 320 km from the geographic South Pole. The history and treasures of the world's ultimate marine sanctuary will be revealed during this extraordinary expedition. You will be able, weather and ice conditions permitting, to discover several emblematic sites in the region. Among the possible stopovers, Cape Adare, at the northern end of the Borchgrevink coast, home to the world's largest colony of Adelie penguins. We will attempt to reach Terra Nova Bay where the Italian and South Korean scientific stations are located to the north and the Drygalski Ice Tongue to the south. Dating back at least 4000 years, it extends 70 km offshore from the David Glacier and is 24 km at its widest point. On the Inexpressible Island, discover the exceptional survival conditions of a group of six men of the Terra Nova expedition, led by Robert Falcon Scott (1910-1913), forced to winter in a cave dug in the ice, today classified as an Antarctica historical monument. On Ross Island, follow in the footsteps of the polar explorers Sir James Clark Ross and discover Sir Ernest Shackleton's hut, classified as an Antarctica historical monument. Built at Cape Royds during the British expedition Nimrod (1907-1909), it proudly stands at the bottom of Mount Erebus. Sixty years earlier, while Captain James Ross was trying to reach the South Magnetic Pole, he discovered Franklin Island, located 130 km east of Cape Hickey in Victoria Land. He named it after Sir John Franklin, Arctic explorer and governor of the territory of present-day Tasmania. You will be offered there, a privileged position to observe Adelie penguins in their daily ballet as well as Weddell seals, resting on the shore.

Day 15 AT SEA

During your day at sea, make the most of the many services and activities on board. Treat yourself to a moment of relaxation in the spa or stay in shape in the fitness centre. Depending on the season, let yourself be tempted by the swimming pool or a spot of sunbathing. This day without a port of call will also be an opportunity to enjoy the conferences or shows proposed on board, to do some shopping in the boutique or to meet the PONANT photographers in their dedicated space. As for lovers of the open sea, they will be able to visit the ship's upper deck to admire the spectacle of the waves and perhaps be lucky enough to observe marine species. A truly enchanted interlude, combining comfort, rest and entertainment.

Day 16 AT SEA

During your day at sea, make the most of the many services and activities on board. Treat yourself to a moment of relaxation in the spa or stay in shape in the fitness centre. Depending on the season, let yourself be tempted by the swimming pool or a spot of sunbathing. This day without a port of call will also be an opportunity to enjoy the conferences or shows proposed on board, to do some shopping in the boutique or to meet the PONANT photographers in their dedicated space. As for lovers of the open sea, they will be able to visit the ship's upper deck to admire the spectacle of the waves and perhaps be lucky enough to observe marine species. A truly enchanted interlude, combining comfort, rest and entertainment.

Day 17 - AT SEA

The Small Cruise Ship Collection

www.small-cruise-ships.com

01432 507 280 (within UK)

info@small-cruise-ships.com | small-cruise-ships.com



The Small Cruise Ship Collection

www.small-cruise-ships.com

small-cruise-ships.com

info@small-cruise-ships.com

During your day at sea, make the most of the many services and activities on board. Treat yourself to a moment of relaxation in the spa or stay in shape in the fitness centre. Depending on the season, let yourself be tempted by the swimming pool or a spot of sunbathing. This day without a port of call will also be an opportunity to enjoy the conferences or shows proposed on board, to do some shopping in the boutique or to meet the PONANT photographers in their dedicated space. As for lovers of the open sea, they will be able to visit the ship's upper deck to admire the spectacle of the waves and perhaps be lucky enough to observe marine species. A truly enchanted interlude, combining comfort, rest and entertainment.

Day 18 MACQUARIE ISLAND

Long celebrated as one of the wonder spots of the world, Macquarie Island is an island of great beauty and outstanding natural diversity, a breeding place for more than 3.5 million seabirds, most of which are penguins. There are four species breeding on Macquarie Island: Royals, Kings, Gentoos and Rock Hoppers. There are also three types of fur seals and one seventh of the world's population of elephant seals breeding on the Island. In 1948 The Australian National Antarctic Research Expeditions (ANARE) established its expedition headquarters on Macquarie Island. If time and weather permit, guests will have the opportunity to land ashore and view the prolific wildlife that resides here.

Day 19 AT SEA

During your day at sea, make the most of the many services and activities on board. Treat yourself to a moment of relaxation in the spa or stay in shape in the fitness centre. Depending on the season, let yourself be tempted by the swimming pool or a spot of sunbathing. This day without a port of call will also be an opportunity to enjoy the conferences or shows proposed on board, to do some shopping in the boutique or to meet the PONANT photographers in their dedicated space. As for lovers of the open sea, they will be able to visit the ship's upper deck to admire the spectacle of the waves and perhaps be lucky enough to observe marine species. A truly enchanted interlude, combining comfort, rest and entertainment.

Day 20 THE SNARES

Amongst the Subantarctic Islands of New Zealand, the Snares have the distinction of being the only forested group without introduced mammals, not even mice. Consequently, it is a remarkable haven for wildlife. The island boasts more nesting seabirds than the entire realm of the British Isles. Over 2 million Sooty Shearwaters breed here in the summer months. Four species of Albatross are listed as breeding on the Snares along with 35,000 endemic Snares crested penguins. There are also approximately 1,000 New Zealand fur seals and 500 New Zealand sea lions. Landing on the Snares is prohibited. If time and weather permit, you will have the opportunity to explore the coastal environments and view the prolific wildlife from our fleet of zodiac.

Day 21-22 DUNEDIN (16th February 2025)



Dunedin is New Zealand's oldest city and is often referred to as the Edinburgh of New Zealand. This city of the south, wears its Scottish heritage with pride. The city contains some of the best preserved Victorian and Edwardian architecture in the Southern Hemisphere. The Silverpeaks hinterland to the North West provides a picturesque backdrop and The Otago Peninsula, which lies within the city boundaries, has internationally renowned wildlife reserves, including the only mainland breeding colony of Northern Royal Albatross.

Please Note:

Itineraries are subject to change.

The Small Cruise Ship Collection

www.small-cruise-ships.com

small-cruise-ships.com

info@small-cruise-ships.com

YOUR SHIP: LE SOLEAL

YOUR SHIP:

Le Soleal

VESSEL TYPE:

LENGTH:

PASSENGER CAPACITY:

BUILT/REFURBISHED:

Luxury Small Ship A sleek silhouette, a welcoming intimate atmosphere, and the same philosophy that has made her sister ships, L'Austral, Lyrial and Le Boreal, such a success. This magnificent yacht of only 132 staterooms and suites, all with balconies, has contemporary decor inspired by the luxury yachting world, with fluid lines and a modern colour scheme combining natural wood with shades of grey and white. White Corian counters in the lobby contrast with the warmth of leather to recall a boat's hull, while the central sculpture of enamelled pieces takes its inspiration from the sea. In the lounge bar, the carpet picks up a tennis stripe theme symbolising a certain idea of cruising, one synonymous with French elegance and a chic seaside spirit. Wheelchairs 3 specially adapted wheelchair cabins (Deck 3 = Superior cabin no. 307, no balcony, Deck 4 = Prestige Cabin no. 407 - with balcony and Deck 5 = Prestige Cabin no 509, with balcony) and lifts to all decks/areas. Read about our recent Ponant cruise to Antarctica Please click the following links to read more about Ponant and the other Ponant cruise ships.



The Small Cruise Ship Collection
www.small-cruise-ships.com

01432 507 280 (within UK)

info@small-cruise-ships.com | small-cruise-ships.com

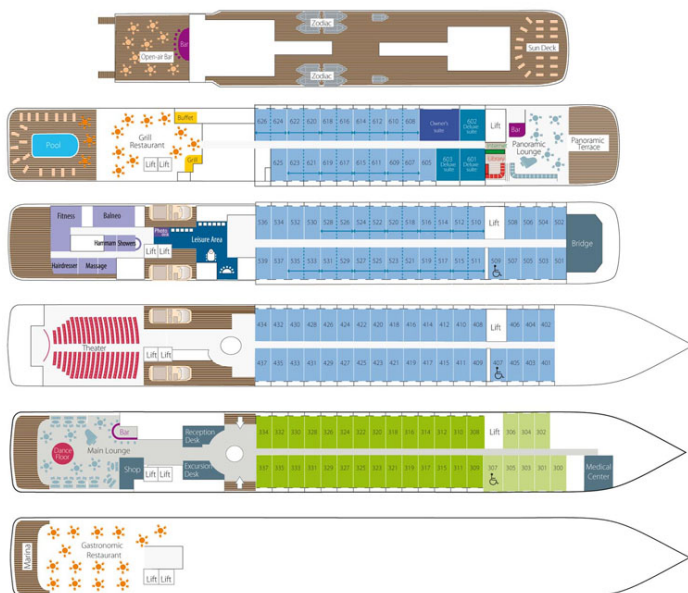
The Small Cruise Ship Collection

www.small-cruise-ships.com

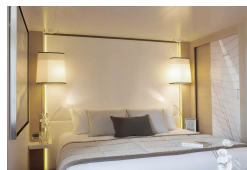
small-cruise-ships.com

info@small-cruise-ships.com

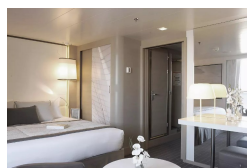
INSIDE YOUR SHIP



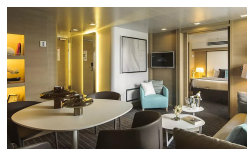
DeLuxe Stateroom



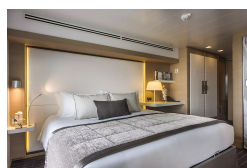
Deluxe Suite



Owner's Suite



Prestige Stateroom - Deck 4



Prestige Stateroom - Deck 5

Prestige Stateroom - Deck 6

Prestige Suite - Deck 5

Prestige Suite - Deck 6

Superior Stateroom

Superior Stateroom

The Small Cruise Ship Collection

www.small-cruise-ships.com

small-cruise-ships.com

info@small-cruise-ships.com

PRICING

26-Jan-2025 to 16-Feb-2025

Prestige Suite - Deck 6	£38443 GBP pp
Owner's Suite	£49475 GBP pp
Prestige Suite - Deck 5	£36378 GBP pp
DeLuxe Stateroom	£20981 GBP pp
Prestige Stateroom - Deck 6	£23271 GBP pp
Prestige Stateroom - Deck 5	£22587 GBP pp
Prestige Stateroom - Deck 4	£22128 GBP pp
Deluxe Suite	£34771 GBP pp
Superior Stateroom	£19369 GBP pp

16-Feb-2025 to 09-Mar-2025

Prestige Suite - Deck 5	£36378 GBP pp
Prestige Stateroom - Deck 4	£22128 GBP pp
DeLuxe Stateroom	£20981 GBP pp
Superior Stateroom	£19369 GBP pp
Prestige Stateroom - Deck 5	£22587 GBP pp
Prestige Suite - Deck 6	£38443 GBP pp
Deluxe Suite	£34771 GBP pp
Owner's Suite	£49475 GBP pp
Prestige Stateroom - Deck 6	£23271 GBP pp

26-Jan-2026 to 16-Feb-2026

Prestige Suite - Deck 5	£37128 GBP pp
Owner's Suite	£50495 GBP pp
Prestige Suite - Deck 6	£39234 GBP pp
Deluxe Suite	£35485 GBP pp
Prestige Stateroom - Deck 4	£22587 GBP pp
Prestige Stateroom - Deck 6	£23760 GBP pp
Prestige Stateroom - Deck 5	£23062 GBP pp
Superior Stateroom	£19777 GBP pp
DeLuxe Stateroom	£21420 GBP pp

ADDITIONAL CHARGES:

Port fees. From 1550 AUD pp