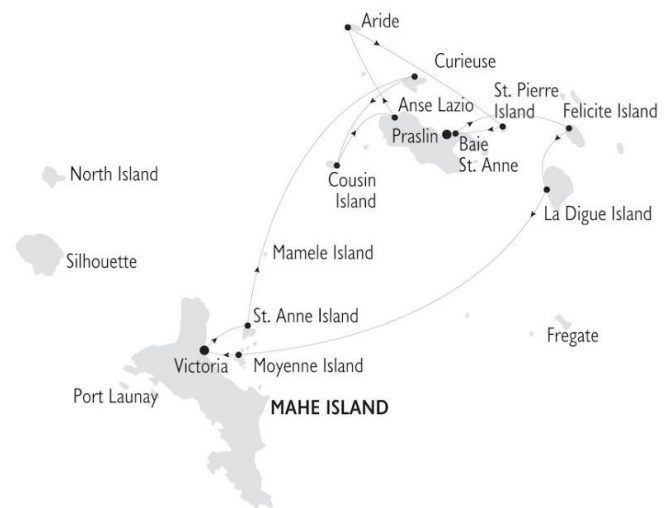




## 8 DAY CRUISE IN THE SEYCHELLES

The Seychelles Islands are the perfect destination for both summer and winter cruises due to their warm year round climate. Discover the Seychelles the best way: By small ship! Hop from island to island in this unspoilt paradise and visit a variety islands renowned for their fauna and flora, and beaches. Snorkel or dive to see an amazing underwater world. Walk into centuries old rain forests with unique and endemic species of wildlife and spot the rare black parrots, the world famous Coco de Mer palm trees or the giant tortoise. We hop from island to island, taking plenty of time for swimming, snorkelling and relaxing on the amazing beaches. The pace of life here is slow, and why rush? PLEASE NOTE: 3 and 4 night cruise options available - please get in touch for more information.



### ITINERARY

Day 1 – Saturday Mahe Inter Island Quay - St Anne Island

Embarkation 15:00 to 16:00 pm. After the Welcome cocktail and safety drill, we leave Port Victoria and sail to nearby St Anne for a refreshing swim stop off the ship. Overnight at anchor near St Anne. Welcome dinner

Day 2 – Sunday St Anne Island - Curieuse

We leave St Anne Island early in the morning to reach Curieuse. This morning we visit this uninhabited island, once a leper colony and home to giant tortoises. Our walking excursion with a park guide will bring us to the farm, along mangrove forests.



Later we return to the beach for a BBQ under the trees. In the afternoon you can enjoy the beach and sea activities. Overnight at anchor..

Day 3 – Monday Curieuse - Cousin Island - Anse Lazio

In the morning we sail for Cousin Island. Optional excursion to the Bird Sanctuary which is in the care Bird Life International. A quarter million birds breed on Cousin which also has several nesting beaches for turtles. Later in the afternoon we reach Anse Lazio. In the afternoon we sail to Anse Lazio, Praslin, one of the most beautiful beaches in the world. Time for water sports, snorkelling or optional diving. Evening at anchor.

Day 4 - Tuesday Anse Lazio – Aride - St Pierre - Baie St Anne, Praslin

In the morning we leave for Aride. Our optional excursion will take you all the way to the top of the island for an amazing view of the island. The island is home to the Wright's gardenia found nowhere else on earth and to bird species like the Audubon's shearwater, the Seychelles warbler. At noon we sail for St Pierre Island. We reach St Pierre after lunch for a 3 hour snorkeling and swimming stop. At sunset, we leave St Pierre to sail into Baie St Anne, Praslin. Overnight at dock. Creole Night.

Day 5 – Wednesday Baie St Anne, Praslin – Felicite – La Digue

Baie St. Anne, Praslin. Optional excursion to the famous Vallee de Mai Reserve, a World Heritage site. You will explore the pathways under tall palm trees which produce the famous Coco

de Mer and you might sight a black parrot only found in Praslin. Afternoon sailing to Felicite for swimming, snorkelling or optional diving excursion on this uninhabited island. Evening sailing to La Digue. Evening arrival at La Digue. Anchor in front of the Port. Overnight.

Day 6 – Thursday La Digue - Moyenne Island

Half day excursion in La Digue, the most photographed and quaint community in the Seychelles. Our optional excursion will take us by bus to the Veuve Nature Reserve and through Union Plantation to l' Anse Source d' Argent beach. Arrival at L' Union Estate and tour of the copra kiln, traditional coconut oil mill and the colonial plantation house. Time at Anse Source D' Argent one of the most magnificent beaches in the world. Marvel at some of Seychelles most impressive rock formations - truly unique, whilst enjoying a refreshment. Time for hunting souvenirs at La Passe, the islands main village, before returning to the ship. Late afternoon sailing to Moyenne island, opposite Mahe. Evening arrival at Moyenne. Overnight at anchor.

Day 7 – Friday Moyenne Island – Mahe, Inter Island Quay

Short guiding around the island and time for swim. Beach BBQ on the island. This is a last opportunity for snorkelling and swimming. We leave Moyenne Island for Mahe's Victoria Port in the afternoon. Late afternoon, we reach the Inter island Quay, Mahe. Captain's Farewell Dinner with live music and dancing. Overnight in Mahe.

Day 8 – Saturday Mahe (Victoria)





## The Small Cruise Ship Collection

[www.small-cruise-ships.com](http://www.small-cruise-ships.com)

[small-cruise-ships.com](http://small-cruise-ships.com)

[info@small-cruise-ships.com](mailto:info@small-cruise-ships.com)

Disembarkation 9:00 to 10.00 am

Please Note:

Itineraries can be changed at the discretion of the Vessel's Captain in case of adverse weather conditions - winds of 6/7 beaufort or more depending on the vessel - on port authorities not allowing a vessel to leave port or in case of other extraordinary conditions.

Please Note:

3 and 4 night cruise options available - please get in touch to learn more.



The Small Cruise  
Ship Collection

[www.small-cruise-ships.com](http://www.small-cruise-ships.com)

[small-cruise-ships.com](http://small-cruise-ships.com)

[info@small-cruise-ships.com](mailto:info@small-cruise-ships.com)

## YOUR SHIP: PEGASUS

**YOUR SHIP:**

**Pegasus**

**VESSEL TYPE:**

**LENGTH:**

**PASSENGER CAPACITY:**

**BUILT/REFURBISHED:**

Here you can enjoy your afternoons at sea, gazing at the passing scenery or mingling with fellow passengers while enjoying premium Cocktails from the



Seychelles bar.

The twin-hulled Pegasus, built in 1990, completely renovated in the winter of 2019 it accommodates up to 44 guests in a relaxed, congenial atmosphere. On board you will enjoy magnificent sea views as you stroll our 2,550 square feet or 240 m2 of open deck. You can relax with friends in the handsomely appointed lounge, browse in the well-stocked library or enjoy ocean-view dining in the convivial and spacious restaurant area. A platform on Pegasus stern enables you to swim when weather and anchorage conditions permit. Dining Room The dining room is located on the upper deck and is a spacious area surrounded with large windows, and can accommodate all clients in one seating. Enjoy our hospitality and our chef's superb creations, choosing from a wide variety of international and local dishes. Lounge Area Our friendly, elegant bar is one of the most popular spots on the ship and an ideal setting for personal moments. Talk with your old friends or make new ones over a refreshing drink. Outdoor Restaurant You can relax in the outdoor shaded restaurant on the aft of the Pegasos. Here you can enjoy ocean-view delightful meals al fresco, weather permitting. Sun Deck Bar & Lounge You can relax in the outdoor bar and lounge area on the top deck of the Pegasos.



The Small Cruise  
Ship Collection

[www.small-cruise-ships.com](http://www.small-cruise-ships.com)

**01432 507 280** (within UK)

[info@small-cruise-ships.com](mailto:info@small-cruise-ships.com) | [small-cruise-ships.com](http://small-cruise-ships.com)





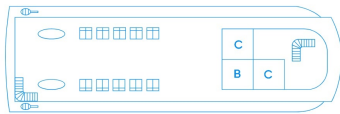
The Small Cruise  
Ship Collection

[www.small-cruise-ships.com](http://www.small-cruise-ships.com)

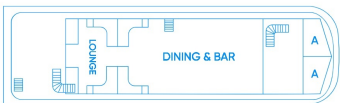
[small-cruise-ships.com](http://small-cruise-ships.com)

[info@small-cruise-ships.com](mailto:info@small-cruise-ships.com)

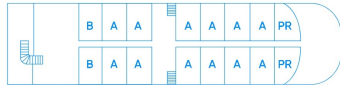
## INSIDE YOUR SHIP



**360°**  
Sun Deck



**Infinity**  
Upper Deck

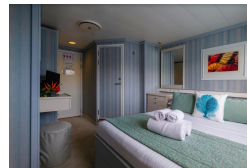


**Riviera**  
Main Deck

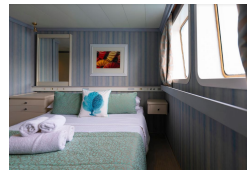


**Oceans**  
Lower Deck

Category A



Category B



Category C



Category P



The Small Cruise  
Ship Collection

[www.small-cruise-ships.com](http://www.small-cruise-ships.com)

01432 507 280 (within UK)

[info@small-cruise-ships.com](mailto:info@small-cruise-ships.com) | [small-cruise-ships.com](http://small-cruise-ships.com)



## PRICING

### 31-May-2025 to 07-Jun-2025

Category C	£2316 GBP pp
Category B	£2614 GBP pp
Category A	£3320 GBP pp
Category P	£3486 GBP pp

### 07-Jun-2025 to 14-Jun-2025

Category C	£2316 GBP pp
Category B	£2614 GBP pp
Category A	£3320 GBP pp
Category P	£3486 GBP pp

### 14-Jun-2025 to 21-Jun-2025

Category C	£1737 GBP pp
Category B	£1961 GBP pp
Category A	£2490 GBP pp
Category P	£2614 GBP pp

### 21-Jun-2025 to 28-Jun-2025

Category C	£2316 GBP pp
Category B	£2614 GBP pp
Category A	£3320 GBP pp
Category P	£3486 GBP pp

### 28-Jun-2025 to 05-Jul-2025

Category C	£1158 GBP pp
Category B	£1307 GBP pp
Category A	£1660 GBP pp
Category P	£1743 GBP pp

### 05-Jul-2025 to 12-Jul-2025

Category C	£1158 GBP pp
Category B	£1307 GBP pp
Category A	£1660 GBP pp
Category P	£1743 GBP pp

### 12-Jul-2025 to 19-Jul-2025

Category C	£1444 GBP pp
Category B	£1681 GBP pp
Category A	£2179 GBP pp
Category P	£2303 GBP pp

### 19-Jul-2025 to 26-Jul-2025

Category C	£1444 GBP pp
Category B	£1681 GBP pp
Category A	£2179 GBP pp
Category P	£2303 GBP pp

### 26-Jul-2025 to 02-Aug-2025

Category C	£963 GBP pp
Category B	£1120 GBP pp
Category A	£1452 GBP pp
Category P	£1536 GBP pp





## PRICING

### 02-Aug-2025 to 09-Aug-2025

Category C	£963 GBP pp
Category B	£1120 GBP pp
Category A	£1452 GBP pp
Category P	£1536 GBP pp

### 09-Aug-2025 to 16-Aug-2025

Category C	£963 GBP pp
Category B	£1120 GBP pp
Category A	£1452 GBP pp
Category P	£1536 GBP pp

### 16-Aug-2025 to 23-Aug-2025

Category C	£1926 GBP pp
Category B	£2241 GBP pp
Category A	£2905 GBP pp
Category P	£3071 GBP pp

### 23-Aug-2025 to 30-Aug-2025

Category C	£1926 GBP pp
Category B	£2241 GBP pp
Category A	£2905 GBP pp
Category P	£3071 GBP pp

### 30-Aug-2025 to 06-Sep-2025

Category C	£1737 GBP pp
Category B	£1961 GBP pp
Category A	£2490 GBP pp
Category P	£2614 GBP pp

### 06-Sep-2025 to 13-Sep-2025

Category C	£1737 GBP pp
Category B	£1961 GBP pp
Category A	£2490 GBP pp
Category P	£2614 GBP pp

### 13-Sep-2025 to 20-Sep-2025

Category C	£1737 GBP pp
Category B	£1961 GBP pp
Category A	£2490 GBP pp
Category P	£2614 GBP pp

### 20-Sep-2025 to 27-Sep-2025

Category C	£2316 GBP pp
Category B	£2614 GBP pp
Category A	£3320 GBP pp
Category P	£3486 GBP pp

### 27-Sep-2025 to 04-Oct-2025

Category C	£2316 GBP pp
Category B	£2614 GBP pp
Category A	£3320 GBP pp
Category P	£3486 GBP pp



## PRICING

### 04-Oct-2025 to 11-Oct-2025

Category C	£2316 GBP pp
Category B	£2614 GBP pp
Category A	£3320 GBP pp
Category P	£3486 GBP pp

### 11-Oct-2025 to 18-Oct-2025

Category C	£2316 GBP pp
Category B	£2614 GBP pp
Category A	£3320 GBP pp
Category P	£3486 GBP pp

### 18-Oct-2025 to 25-Oct-2025

Category C	£2316 GBP pp
Category B	£2614 GBP pp
Category A	£3320 GBP pp
Category P	£3486 GBP pp

### 25-Oct-2025 to 01-Nov-2025

Category C	£2316 GBP pp
Category B	£2614 GBP pp
Category A	£3320 GBP pp
Category P	£3486 GBP pp

### 01-Nov-2025 to 08-Nov-2025

Category C	£2316 GBP pp
Category B	£2614 GBP pp
Category A	£3320 GBP pp
Category P	£3486 GBP pp

### 08-Nov-2025 to 15-Nov-2025

Category C	£2316 GBP pp
Category B	£2614 GBP pp
Category A	£3320 GBP pp
Category P	£3486 GBP pp

### 15-Nov-2025 to 22-Nov-2025

Category C	£1737 GBP pp
Category B	£1961 GBP pp
Category A	£2490 GBP pp
Category P	£2614 GBP pp

### 22-Nov-2025 to 29-Nov-2025

Category C	£2316 GBP pp
Category B	£2614 GBP pp
Category A	£3320 GBP pp
Category P	£3486 GBP pp

### 29-Nov-2025 to 06-Dec-2025

Category C	£1737 GBP pp
Category B	£1961 GBP pp
Category A	£2490 GBP pp
Category P	£2614 GBP pp





## PRICING

### 06-Dec-2025 to 13-Dec-2025

Category C	£1444 GBP pp
Category B	£1681 GBP pp
Category A	£2179 GBP pp
Category P	£2303 GBP pp

### 13-Dec-2025 to 20-Dec-2025

Category C	£1926 GBP pp
Category B	£2241 GBP pp
Category A	£2905 GBP pp
Category P	£3071 GBP pp

### 20-Dec-2025 to 27-Dec-2025

Category C	£1737 GBP pp
Category B	£1961 GBP pp
Category A	£2490 GBP pp
Category P	£2614 GBP pp

### 27-Dec-2025 to 03-Jan-2026

Category C	£1737 GBP pp
Category B	£1961 GBP pp
Category A	£2490 GBP pp
Category P	£2614 GBP pp

### 03-Jan-2026 to 10-Jan-2026

Category C	£1950 GBP pp
Category B	£2316 GBP pp
Category A	£2988 GBP pp
Category P	£3171 GBP pp

### 10-Jan-2026 to 17-Jan-2026

Category C	£1950 GBP pp
Category B	£2316 GBP pp
Category A	£2988 GBP pp
Category P	£3171 GBP pp

### 17-Jan-2026 to 24-Jan-2026

Category C	£1950 GBP pp
Category B	£2316 GBP pp
Category A	£2988 GBP pp
Category P	£3171 GBP pp

### 24-Jan-2026 to 31-Jan-2026

Category C	£1950 GBP pp
Category B	£2316 GBP pp
Category A	£2988 GBP pp
Category P	£3171 GBP pp

### 31-Jan-2026 to 07-Feb-2026

Category C	£2366 GBP pp
Category B	£2698 GBP pp
Category A	£3444 GBP pp
Category P	£3610 GBP pp



## PRICING

### 07-Feb-2026 to 14-Feb-2026

Category C	£2366 GBP pp
Category B	£2698 GBP pp
Category A	£3444 GBP pp
Category P	£3610 GBP pp

### 14-Feb-2026 to 21-Feb-2026

Category C	£2366 GBP pp
Category B	£2698 GBP pp
Category A	£3444 GBP pp
Category P	£3610 GBP pp

### 21-Feb-2026 to 28-Feb-2026

Category C	£2366 GBP pp
Category B	£2698 GBP pp
Category A	£3444 GBP pp
Category P	£3610 GBP pp

### 28-Feb-2026 to 07-Mar-2026

Category C	£2366 GBP pp
Category B	£2698 GBP pp
Category A	£3444 GBP pp
Category P	£3610 GBP pp

### 07-Mar-2026 to 14-Mar-2026

Category C	£2366 GBP pp
Category B	£2698 GBP pp
Category A	£3444 GBP pp
Category P	£3610 GBP pp

### 14-Mar-2026 to 21-Mar-2026

Category C	£2366 GBP pp
Category B	£2698 GBP pp
Category A	£3444 GBP pp
Category P	£3610 GBP pp

### 21-Mar-2026 to 28-Mar-2026

Category C	£2366 GBP pp
Category B	£2698 GBP pp
Category A	£3444 GBP pp
Category P	£3610 GBP pp

### 28-Mar-2026 to 04-Apr-2026

Category C	£2366 GBP pp
Category B	£2698 GBP pp
Category A	£3444 GBP pp
Category P	£3610 GBP pp

### 04-Apr-2026 to 11-Apr-2026

Category C	£2366 GBP pp
Category B	£2698 GBP pp
Category A	£3444 GBP pp
Category P	£3610 GBP pp





## PRICING

### 11-Apr-2026 to 18-Apr-2026

Category C	£2366 GBP pp
Category B	£2698 GBP pp
Category A	£3444 GBP pp
Category P	£3610 GBP pp

### 18-Apr-2026 to 25-Apr-2026

Category C	£2366 GBP pp
Category B	£2698 GBP pp
Category A	£3444 GBP pp
Category P	£3610 GBP pp

### 25-Apr-2026 to 02-May-2026

Category C	£2366 GBP pp
Category B	£2698 GBP pp
Category A	£3444 GBP pp
Category P	£3610 GBP pp

### 16-May-2026 to 23-May-2026

Category C	£1950 GBP pp
Category B	£2316 GBP pp
Category A	£2988 GBP pp
Category P	£3171 GBP pp

### 23-May-2026 to 30-May-2026

Category C	£1950 GBP pp
Category B	£2316 GBP pp
Category A	£2988 GBP pp
Category P	£3171 GBP pp

### 30-May-2026 to 06-Jun-2026

Category C	£1950 GBP pp
Category B	£2316 GBP pp
Category A	£2988 GBP pp
Category P	£3171 GBP pp

### 06-Jun-2026 to 13-Jun-2026

Category C	£1950 GBP pp
Category B	£2316 GBP pp
Category A	£2988 GBP pp
Category P	£3171 GBP pp

### 13-Jun-2026 to 20-Jun-2026

Category C	£1950 GBP pp
Category B	£2316 GBP pp
Category A	£2988 GBP pp
Category P	£3171 GBP pp

### 20-Jun-2026 to 27-Jun-2026

Category C	£1950 GBP pp
Category B	£2316 GBP pp
Category A	£2988 GBP pp
Category P	£3171 GBP pp



## PRICING

### 27-Jun-2026 to 04-Jul-2026

Category C	£1950 GBP pp
Category B	£2316 GBP pp
Category A	£2988 GBP pp
Category P	£3171 GBP pp

### 04-Jul-2026 to 11-Jul-2026

Category C	£1950 GBP pp
Category B	£2316 GBP pp
Category A	£2988 GBP pp
Category P	£3171 GBP pp

### 11-Jul-2026 to 18-Jul-2026

Category C	£1950 GBP pp
Category B	£2316 GBP pp
Category A	£2988 GBP pp
Category P	£3171 GBP pp

### 18-Jul-2026 to 25-Jul-2026

Category C	£1950 GBP pp
Category B	£2316 GBP pp
Category A	£2988 GBP pp
Category P	£3171 GBP pp

### 25-Jul-2026 to 01-Aug-2026

Category C	£1950 GBP pp
Category B	£2316 GBP pp
Category A	£2988 GBP pp
Category P	£3171 GBP pp

### 01-Aug-2026 to 08-Aug-2026

Category C	£1950 GBP pp
Category B	£2316 GBP pp
Category A	£2988 GBP pp
Category P	£3171 GBP pp

### 08-Aug-2026 to 15-Aug-2026

Category C	£1950 GBP pp
Category B	£2316 GBP pp
Category A	£2988 GBP pp
Category P	£3171 GBP pp

### 15-Aug-2026 to 22-Aug-2026

Category C	£1950 GBP pp
Category B	£2316 GBP pp
Category A	£2988 GBP pp
Category P	£3171 GBP pp

### 22-Aug-2026 to 29-Aug-2026

Category C	£1950 GBP pp
Category B	£2316 GBP pp
Category A	£2988 GBP pp
Category P	£3171 GBP pp





## PRICING

### 29-Aug-2026 to 05-Sep-2026

Category C	£1950 GBP pp
Category B	£2316 GBP pp
Category A	£2988 GBP pp
Category P	£3171 GBP pp

### 05-Sep-2026 to 12-Sep-2026

Category C	£2366 GBP pp
Category B	£2698 GBP pp
Category A	£3444 GBP pp
Category P	£3610 GBP pp

### 12-Sep-2026 to 19-Sep-2026

Category C	£2366 GBP pp
Category B	£2698 GBP pp
Category A	£3444 GBP pp
Category P	£3610 GBP pp

### 19-Sep-2026 to 26-Sep-2026

Category C	£2366 GBP pp
Category B	£2698 GBP pp
Category A	£3444 GBP pp
Category P	£3610 GBP pp

### 26-Sep-2026 to 03-Oct-2026

Category C	£2366 GBP pp
Category B	£2698 GBP pp
Category A	£3444 GBP pp
Category P	£3610 GBP pp

### 03-Oct-2026 to 10-Oct-2026

Category C	£2366 GBP pp
Category B	£2698 GBP pp
Category A	£3444 GBP pp
Category P	£3610 GBP pp

### 10-Oct-2026 to 17-Oct-2026

Category C	£2366 GBP pp
Category B	£2698 GBP pp
Category A	£3444 GBP pp
Category P	£3610 GBP pp

### 17-Oct-2026 to 24-Oct-2026

Category C	£2366 GBP pp
Category B	£2698 GBP pp
Category A	£3444 GBP pp
Category P	£3610 GBP pp

### 24-Oct-2026 to 31-Oct-2026

Category C	£2366 GBP pp
Category B	£2698 GBP pp
Category A	£3444 GBP pp
Category P	£3610 GBP pp



## PRICING

### 31-Oct-2026 to 07-Nov-2026

Category C	£2366 GBP pp
Category B	£2698 GBP pp
Category A	£3444 GBP pp
Category P	£3610 GBP pp

### 07-Nov-2026 to 14-Nov-2026

Category C	£2366 GBP pp
Category B	£2698 GBP pp
Category A	£3444 GBP pp
Category P	£3610 GBP pp

### 14-Nov-2026 to 21-Nov-2026

Category C	£2366 GBP pp
Category B	£2698 GBP pp
Category A	£3444 GBP pp
Category P	£3610 GBP pp

### 21-Nov-2026 to 28-Nov-2026

Category C	£2366 GBP pp
Category B	£2698 GBP pp
Category A	£3444 GBP pp
Category P	£3610 GBP pp

### 28-Nov-2026 to 05-Dec-2026

Category C	£2366 GBP pp
Category B	£2698 GBP pp
Category A	£3444 GBP pp
Category P	£3610 GBP pp

### 05-Dec-2026 to 12-Dec-2026

Category C	£1950 GBP pp
Category B	£2316 GBP pp
Category A	£2988 GBP pp
Category P	£3171 GBP pp

### 12-Dec-2026 to 19-Dec-2026

Category C	£1950 GBP pp
Category B	£2316 GBP pp
Category A	£2988 GBP pp
Category P	£3171 GBP pp

### 19-Dec-2026 to 26-Dec-2026

Category C	£2366 GBP pp
Category B	£2698 GBP pp
Category A	£3444 GBP pp
Category P	£3610 GBP pp

### 26-Dec-2026 to 02-Jan-2027

Category C	£2366 GBP pp
Category B	£2698 GBP pp
Category A	£3444 GBP pp
Category P	£3610 GBP pp





The Small Cruise  
Ship Collection

[www.small-cruise-ships.com](http://www.small-cruise-ships.com)

[small-cruise-ships.com](http://small-cruise-ships.com)

[info@small-cruise-ships.com](mailto:info@small-cruise-ships.com)

**ADDITIONAL CHARGES:**

**Port Charges. From 415 EUR pp**



The Small Cruise  
Ship Collection

[www.small-cruise-ships.com](http://www.small-cruise-ships.com)

**01432 507 280** (within UK)

[info@small-cruise-ships.com](mailto:info@small-cruise-ships.com) | [small-cruise-ships.com](http://small-cruise-ships.com)