



The Small Cruise
Ship Collection

www.small-cruise-ships.com

small-cruise-ships.com

info@small-cruise-ships.com

CULTURAL TREASURES AND SCANDINAVIAN PANORAMAS - NORWAY, SWEDEN & SCOTLAND IN LUXURY

From Edinburgh to Stockholm, PONANT brings you a brand-new 12-day cruise aboard Le Bellot, through the landscapes and cultural treasures of Scotland and Scandinavia. Le Bellot will sail to the Swedish island of Gotland and call at Visby, a site that was important for the Hanseatic League in the Baltic Sea around the 13th century. A UNESCO Heritage Site, this once-opulent city still has remarkably well-preserved ramparts, public buildings, merchant houses and warehouses. Karlskrona, whose history is intrinsically linked to the Swedish Navy, boasts exceptional UNESCO-listed architecture that is characteristic of late-17th-century European naval cities. Then your ship will chart a course towards the charming town of Ronne, on the small Danish island of Bornholm, which is greatly appreciated by the Danish for its variety of landscapes ranging from granite to great sandy beaches. Copenhagen, city of art and history, the charming Danish capital will not fail to surprise you with its easy lifestyle, cultural richness and exceptional heritage. The next step of your voyage will take you to Gothenburg, in Sweden. The country's main port and labelled City of Literature by UNESCO, it can be discovered via its pretty canals, cultural treasures and emblematic districts. Le Bellot will then set a course for Norway, its stunning scenery and its incredible cities and towns. Sitting on the edge of a fjord covered in greenery, Oslo, the creative, multicultural, radiant capital of Norway reflects a deep attachment to its Viking and Scandinavian roots. You will then sail along the coast to Arendal, called the Venice of the North due to its canals. On the southern coast, the colourful facades of Egersund stretch out along the curve of a fjord and the town's industrial past, centred on fishing and earthenware production,

The Small Cruise
Ship Collection

www.small-cruise-ships.com

01432 507 280 (within UK)

info@small-cruise-ships.com | small-cruise-ships.com

The Small Cruise Ship Collection

www.small-cruise-ships.com



small-cruise-ships.com

info@small-cruise-ships.com

is revealed. Le Bellot will sail towards Kirkwall, capital of the Orkney Islands, where numerous seabirds, such as gannets and European shags, have taken up residence. The last stage of your cruise will take you to Aberdeen. Its magnificent coast, boasting a remarkable nature reserve and majestic castles nearby, make Scotland's third largest city, full of Gothic charm, an exceptional port of call. Finally, you will reach Edinburgh, city of history and labelled city of literature by UNESCO, your port of

Gamla stan, meaning "old town" in Swedish, you can stroll at your leisure in picturesque medieval streets until you reach the majestic Royal Palace. On the green island of Djurgarden, you can visit several very different kinds of cultural centres: the Vasa museum is dedicated to a 17th century three-mast, the ecomuseum of Skansen presents traditional customs, and the ABBA museum is dedicated to the legendary pop group. For a fantastic, all-encompassing view of Stockholm, you can take a ride in SkyView, a glass-encased sphere gondola that takes you to the top of the world's largest building, the Ericsson Globe, a Stockholm landmark.



Day 2 VISBY, GOTLAND

This old Hanseatic city lies to the west coast of Gotland, a Swedish island in the Baltic sea. Pass through the spectacular Visby fortifications and visit the old town, a UNESCO World Heritage site. You'll discover the grand Visby homes of rich merchants as well as the lovely low wooden houses in the little cobbled streets. Don't miss Saint Mary's cathedral with its octagonal steeples, as well as Powder tower along the fortifications. Make sure you stop over in one of the rose-adorned cafes; indeed roses abound in this town where you can taste one of the island's specialities, namely saffron pancakes with red fruit.

Day 3 KARLSKRONA

Discover Karlskrona on the southern coast of Sweden, between land and sea, spread over the small islands of the Blekinge archipelago. Its strategic position on the Baltic Sea made it the

disembarkation.

ITINERARY

Day 1 STOCKHOLM

The capital of Sweden occupies an archipelago in the east of the country at the junction of Malar Lake and the Baltic sea. In

The Small Cruise Ship Collection
www.small-cruise-ships.com

01432 507 280 (within UK)

info@small-cruise-ships.com | small-cruise-ships.com



The Small Cruise Ship Collection

www.small-cruise-ships.com

small-cruise-ships.com

info@small-cruise-ships.com

headquarters of the Swedish Royal Navy and its naval dockyard on the orders of King Karl XI of Sweden, in 1680. Constructed from nothing, the citadel has kept its architecture, whose coherence and conservation have today earned its listing as a UNESCO World Heritage Site. Its authentic colourful wooden houses facing the sea - which is never too far away - and its rich naval history give it an exquisite and unique charm. Do not miss this visit.

Day 4 RONNE

To the south-west of the Baltic Sea, the small Danish island of Bornholm is a magnificent and light-filled setting for the charming town of Ronne, its capital. Close to Sweden, Poland and Germany and coveted many times for its strategic position, the island has managed to preserve its identity. Strolling its cobbled streets, fall under the spell of the colourful half-timbered houses and discover Denmark's oldest theatre. The museum located in a former market hall retraces the traditional life of the island and its history. In the midst of landscapes alternating rocky coastlines and fine sandy beaches, maybe you will come across the medieval fortress of Hammerhus, or one of the remarkable round churches scattered over the island.

Day 5 COPENHAGEN

Connected to the far eastern side of Sealand island, a few kilometres away from the Swedish coasts, Copenhagen offers you the high colour of Scandinavian capitals. You can discover the city's riches that weaves through the canal networks through

the historical districts of Christiansborg and Nyhavn. Many palaces provide an aperçu of Danish history. For eating, you can try out the smorrebrod, traditional danish sandwiches made with ham, cheese or smoked fish.

Day 6 GÖTEBORG (GOTHENBURG)

A lively harbour town, Goteborg is located on the west coast of Sweden, at the crossing of the Gota alv river and the bay of Cattegat. In the old Haga district, you can peruse hippy-chic fashion boutiques and bohemian cafes in the ground floors of traditional wood houses. On the majestic Gustave-Adolphe square, you'll see elegant neoclassical buildings. Not far from here is the municipal museum dedicated to the town's history. In addition, you will be able to sail along Goteborg's numerous canals. As for eating, it's the fish and shellfish which make the gastronomic reputation of this beautiful stopover.

Day 7 OSLO

Capital of Norway, Oslo, is a green city. Its many parks and gardens make it the reputedly pleasant city it is. The 80 hectares of Vigeland sculpture parks and its 212 open air exhibitions, the Munch Museum dedicated to the life and works of the Norwegian artist Edvard Munch, plus the Akershus fortress which symbolises Oslo's rich history, are both must-sees. For culture, the national gallery shelters the largest Norwegian collection of paintings, drawings and sculptures open to the public. And, for sports enthusiasts, the Holmenkollen district with its Ski museum and famous ski jump offer the most stunning, all-encompassing view of the city.

The Small Cruise Ship Collection

www.small-cruise-ships.com

01432 507 280 (within UK)

info@small-cruise-ships.com | small-cruise-ships.com



The Small Cruise Ship Collection

www.small-cruise-ships.com

small-cruise-ships.com

info@small-cruise-ships.com

Day 8 ARENDAL

This port town located on the south coast of Norway is considered to be the locality with the best climate in the entire country. Arendal was long reputed for its iron mines from which, in the 19th century, it was able to produce a particularly strong earthy iron ore.

Day 9 EGRSUND

Like a painter's palette, the former industrial town of Egersund unveils its colours as if to better charm its passing visitors. Its small wooden houses, among the best conserved in Norway, certainly display colourful façades that distinguish them from the other municipalities of the southern Norwegian coast, which opted for white at a time when this was a sign of wealth. Admire the façades of Strandgaten, the former main street of the town, and wander the old district of Hauen, which is now full of cafes, galleries and boutiques. Also make a detour to the Heidningeholmen Church, whose foundations date back to the 17th century, and dive into Egersund's past.

Day 10 KIRKWALL, ORKNEY

Capital of the Orkney archipelago, Kirkwall, which means "church bay", is an ideal stopover before continuing on to the Northern Isles. Sheltered in a wide bay, the lively town welcomes the visitor with its charming paved alleyways edged by old houses and craft shops. Tankerness House, the oldest homestead in the town, is a must-see landmark. But the true

architectural treasure of the aptly named Kirkwall is none other than its remarkable red and gold stone cathedral. And because whisky is inseparable from Scotland's identity, stop at the Highland Park Distillery for a highly instructive visit.

Day 11 ABERDEEN, SCOTLAND

In the Aberdeenshire region, Aberdeen is Scotland's third most populous city and Britain's third largest fishing port. It is known as the Granite City due to its grey-coloured granite buildings. It becomes the Silver City when the sun shines upon the building façades. You will love the charm of its many flowers, the source of yet another moniker, the Flower of Scotland. The city once prospered thanks to whale hunting, herring fishing and shipbuilding. The Tolbooth, on the corner of Union Street and King Street, is a magnificent 17th century building that is worth the detour. Today, it is a museum dedicated to the city's history.

Day 12 ROSYTH (EDINBURGH), SCOTLAND

Situated on the southern shore of the Firth of Forth opposite to Rosyth, the great city of Edinburgh has served as Scotland's capital since the 15th century. Although no longer the largest city in the country, it remains the political, religious, and cultural focus of Scottish pride. Edinburgh Castle, in the very center of the city, is one end of the world famous Royal Mile that leads through the Old Town to the Palace of Holyrood, the Queen's official residence in Scotland. A UNESCO World Heritage site, it is a wonderful place to shop and to sample local delicacies, like haggis and the whisky for which Scotland is renowned.

The Small Cruise Ship Collection
www.small-cruise-ships.com

01432 507 280 (within UK)

info@small-cruise-ships.com | small-cruise-ships.com



The Small Cruise Ship Collection

www.small-cruise-ships.com



small-cruise-ships.com

info@small-cruise-ships.com

Please Note:

Itineraries are subject to change.



The Small Cruise Ship Collection

www.small-cruise-ships.com

01432 507 280 (within UK)

info@small-cruise-ships.com | small-cruise-ships.com



The Small Cruise Ship Collection

www.small-cruise-ships.com



small-cruise-ships.com

info@small-cruise-ships.com

YOUR SHIP: LE BELLOT

YOUR SHIP: Le Bellot

VESSEL TYPE:

LENGTH:

PASSENGER CAPACITY:

BUILT/REFURBISHED:

Featuring innovative and environmentally-friendly equipment, elegantly designed staterooms, spacious suites with large windows, and lounge areas that open onto the outside, this new limited-capacity yacht boasting just 92 staterooms and suites will offer you a truly unique cruising experience. As the first ship in a new series, Le Bellot will embody the unique atmosphere of a subtle blend of exploration, refinement, intimacy and comfort. Aboard this ship that flies the French flag, you will experience the incomparable pleasure of an intimate cruise, with the possibility of exploring an ever-increasing range of destinations in an ethnic-chic ambiance with luxury service. Experience a luxurious setting where the accent is on authenticity and passion for travel. **RESTAURANTS** As it is an essential part of French culture, gastronomy will naturally have pride of place aboard this new ship. To the back of Deck 4, you will find a 260 m² panoramic restaurant which can accommodate all of our passengers in a single sitting. Designed differently to that on our other ships, this dining area, which opens onto the outside, will have a buffet of salads, desserts and cheeses at your disposal. Our discreet and attentive crew will provide table service for hot meals. In a relaxed atmosphere, an outdoor grill on Deck 3 will

serve grilled meats with a variety of salads and desserts. **PUBLIC AREAS** Le Bellot has many common areas that are designed and equipped to meet all of your needs while preserving the intimacy of each passenger. A 140 m² reception area includes: A reception/concierge desk, An excursions desk, The ship's administrative services, The sales office, manned by our Guest Relations Officer, Our 50 m² boutique which sells clothing, jewellery, beauty products, postcards and various accessories, Toilets accessible to passengers with reduced mobility. A new hydraulic platform with adjustable height provides: Easier boarding than on any other cruise ship, Easier Zodiac embarkation and disembarkation for expeditions, Easier access to the sea for swimming and practising various water sports such as kayaking or paddle-boarding. A pool deck offering: A pool with a panoramic view, equipped with a counter-current swimming system, A pleasant solarium, An outdoor bar and lounge with armchairs and sofas. A 200 m² main lounge which can accommodate all of our passengers to share convivial moments and to host activities organised during the day or evening. Lastly, a theatre that seats 188, equipped with: The latest sound and lighting technology, A LED wall as the stage backdrop, for the projection of high-resolution images and videos. Please click the following links to read more about Ponant and the other Ponant



The Small Cruise Ship Collection

www.small-cruise-ships.com



small-cruise-ships.com

info@small-cruise-ships.com



cruise ships.



The Small Cruise Ship Collection

www.small-cruise-ships.com

01432 507 280 (within UK)

info@small-cruise-ships.com | small-cruise-ships.com



The Small Cruise Ship Collection

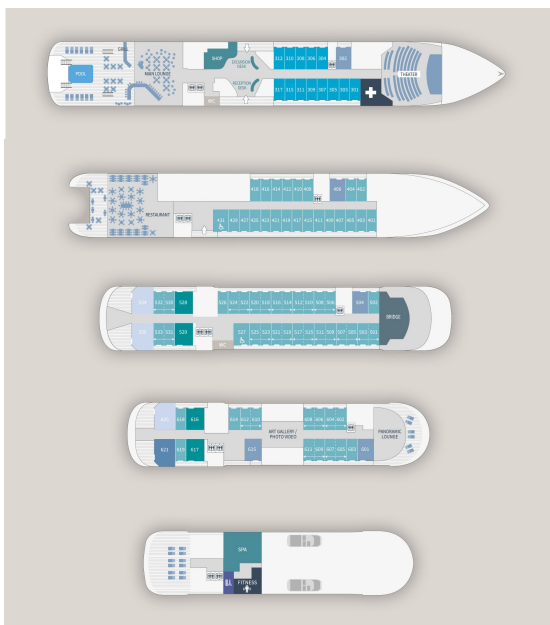
www.small-cruise-ships.com



small-cruise-ships.com

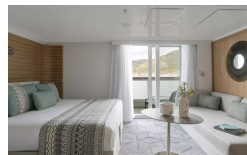
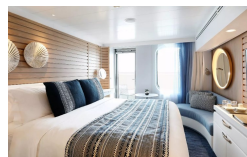
info@small-cruise-ships.com

INSIDE YOUR SHIP



Deluxe Stateroom - waitlist

Deluxe Suite - waitlist



Grand Deluxe Suite

Owner's Suite



Prestige Stateroom Deck 4

Prestige Stateroom Deck 5

Prestige Stateroom Deck 6

Prestige Suite Deck 5

Prestige Suite Deck 6

Privilege Suite

The Small Cruise Ship Collection

www.small-cruise-ships.com

01432 507 280 (within UK)

info@small-cruise-ships.com | small-cruise-ships.com



The Small Cruise Ship Collection

www.small-cruise-ships.com



small-cruise-ships.com

info@small-cruise-ships.com

PRICING

24-Apr-2025 to 05-May-2025

Prestige Stateroom Deck 6	£7985 GBP pp
Deluxe Stateroom - waitlist	£6489 GBP pp
Grand Deluxe Suite	£18245 GBP pp
Prestige Suite Deck 6	£15825 GBP pp
Prestige Stateroom Deck 4	£7199 GBP pp
Prestige Stateroom Deck 5	£7555 GBP pp
Prestige Suite Deck 5	£15045 GBP pp
Privilege Suite	£16609 GBP pp
Owner's Suite	£27150 GBP pp
Deluxe Suite - waitlist	£11125 GBP pp

ADDITIONAL CHARGES:

Port Taxes & Fees 300 GBP pp