

## The Small Cruise Ship Collection

www.small-cruise-ships.com

small-cruise-ships.com

info@small-cruise-ships.com

### DISCOVERY CRUISE - FROM PHNOM PENH TO SIEM REAP

A brief and rewarding taste of Mekong's agrarian heartlands. Aboard the luxurious Aqua Mekong, this 3-night river cruise on the Mekong river offers plenty to see and explore for travelers with limited time. Our private fleet of ergonomic, sheltered launch boats put the pleasure and efficiency in exploring Mekong's myriad waterways, making the most of your time in this beautiful region.



#### ITINERARY

##### Day 1 CAMBODIA Phnom Penh

Our crew warmly welcomes you aboard the Aqua Mekong with our special refreshers, such as the salted watermelon crush with Thai basil. Together we celebrate our journey towards the heart of the Mekong river with the Khmer Apsara dance performance, a famous centuries-old tradition that is memorialized on the temple walls of Angkor Wat.

##### Day 2 CAMBODIA Tonle Sap River - Koh Chen - Kampong Chhnang

Awake to the beauty of rural Cambodia and sail by skiff to the silversmith village of Koh Chen for a first-hand encounter with artisans producing magnificent royal Khmer silverware. Keep an eye out for their famous silver bowls, regularly chosen by Cambodia's king as gifts for visiting dignitaries. In the afternoon,

The Small Cruise Ship Collection

www.small-cruise-ships.com

01432 507 280 (within UK)

info@small-cruise-ships.com | small-cruise-ships.com



## The Small Cruise Ship Collection

[www.small-cruise-ships.com](http://www.small-cruise-ships.com)

[small-cruise-ships.com](http://small-cruise-ships.com)

[info@small-cruise-ships.com](mailto:info@small-cruise-ships.com)

continue experiencing Khmer riverside life in Kampong Chhnang. In this serene village, meet traditional potters and palm-sugar producers and watch them practices age-old craftsmanship and techniques dating back to the 6th century that are still highly relevant and valuable today.

#### Day 3 CAMBODIA Mouth Of The Tonle Sap Lake - Chhnok Tru - Moat Khla

Discover vast wetlands, bird life and remote stilt communities around the Tonle Sap Lake, a UNESCO Biosphere Reserve designated in 1997. In Chhnok Tru, visit an intriguing ice factory and learn from locals what it is like to live in a town where its school, church, pagoda, police station and even the karaoke bar 'float' on water. After lunch, sail to the floating village of Moat Khla and attend a Buddhist blessing ceremony in this isolated community accessible only by water.

#### Day 4 CAMBODIA Tonle Sap Lake - Prek Toal - Siem Reap

Continue the exploration of Southeast Asia's largest freshwater lake, setting off on Aqua Mekong's ergonomic skiffs to the 22,000-hectare Prek Toal Core Bird Reserve, one of the last refuges in Southeast Asia for large waterbirds like the spot-billed pelicans, milky stork, black-headed ibis and the elusive masked finfoot. Disembark in the enigmatic city of Siem Reap, home of the Angkor Wat.

#### Please Note:

All itineraries are subject to change, due to weather and other conditions.

The Small Cruise Ship Collection

[www.small-cruise-ships.com](http://www.small-cruise-ships.com)

01432 507 280 (within UK)

[info@small-cruise-ships.com](mailto:info@small-cruise-ships.com) | [small-cruise-ships.com](http://small-cruise-ships.com)



## The Small Cruise Ship Collection

[www.small-cruise-ships.com](http://www.small-cruise-ships.com)

[small-cruise-ships.com](http://small-cruise-ships.com)

[info@small-cruise-ships.com](mailto:info@small-cruise-ships.com)

## YOUR SHIP: AQUA MEKONG

**YOUR SHIP:** Aqua Mekong

**VESSEL TYPE:**

**LENGTH:**

**PASSENGER CAPACITY:**

**BUILT/REFURBISHED:**

Spacious and indulgent, yet intimate enough to feel entirely exclusive, the Aqua Mekong incorporates relaxed yet refined lounging and dining areas and can accommodate a maximum of 40 guests plus crew. Modern navigation technologies and the highest cruise ship standards as well as our experienced river pilot and crew ensure smooth travel and safety on the water. The Aqua Mekong has 20 air conditioned Design Suites, each one a generous 30 square meters (320 square feet), eight with balconies and all created entirely of local materials with the relaxed sophistication and contemporary comforts of a five star resort. Floor to ceiling panoramic windows allow guests to gaze upon the Mekong from the pillow top California king size bed that can be converted upon request into two full twin beds. More captivating views await on the plush, roomy daybed placed by the window wall or for our eight balcony accommodations, outside along with a romantic table for two. Those who wish to keep up on the world beyond these enthralling riverbanks will appreciate the flat screen television and complementary high speed wireless internet. Sunlit indoors and out, the top level Observation Deck aboard the Aqua Mekong has been designed to seamlessly connect guests with the constantly shifting

landscape of floating Vietnamese villages, French colonial church spires and gilded Buddhist stupas along this mighty river, always in the utmost comfort. Whether one chooses to relax in the air conditioned Indoor Lounge, go horizontal under the sun outside at the ship's Outdoor Lounge area or cool off with a plunge in the shimmering pool at the bow side, the Observation Deck ensures that the river always remains in full view. Guests gravitate to the Indoor Lounge in the mornings for ca phe a, Vietnamese coffee poured over ice with sweet condensed milk, between excursions to swap travelers tales and for daily lectures from the expert local guides. Indoor and outdoor bars Indoor dining room and outdoor private dining Private screening room with theater-style seating Private library/games room Outside shaded lounge with single and double day beds Antique and artisanal boutique Lobby lounge Observation deck with outdoor sunbeds Top deck exercise room overlooking the river Infirmary with onboard medical staff Outdoor plunge pool with private cabanas Two spa treatment rooms, each with single and double massage beds . Ten bicycles are provided free of

The Small Cruise Ship Collection

[www.small-cruise-ships.com](http://www.small-cruise-ships.com)

01432 507 280 (within UK)

[info@small-cruise-ships.com](mailto:info@small-cruise-ships.com) | [small-cruise-ships.com](http://small-cruise-ships.com)





The Small Cruise Ship Collection

www.small-cruise-ships.com

small-cruise-ships.com

info@small-cruise-ships.com



charge onboard

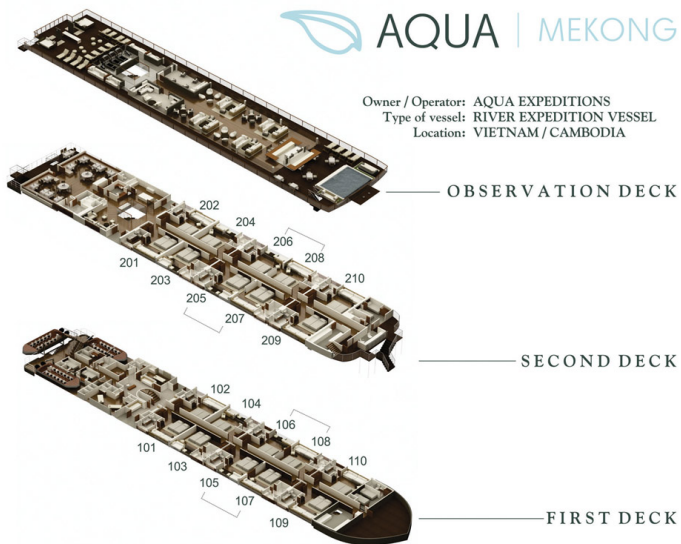
# The Small Cruise Ship Collection

[www.small-cruise-ships.com](http://www.small-cruise-ships.com)

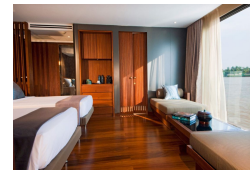
[small-cruise-ships.com](http://small-cruise-ships.com)

[info@small-cruise-ships.com](mailto:info@small-cruise-ships.com)

## INSIDE YOUR SHIP



Suite. From





# The Small Cruise Ship Collection

[www.small-cruise-ships.com](http://www.small-cruise-ships.com)

[small-cruise-ships.com](http://small-cruise-ships.com)

[info@small-cruise-ships.com](mailto:info@small-cruise-ships.com)

## PRICING

**23-Sep-2025 to 26-Sep-2025**

Suite. From £3720 GBP pp

**07-Oct-2025 to 10-Oct-2025**

Suite. From £3720 GBP pp

**21-Oct-2025 to 24-Oct-2025**

Suite. From £3720 GBP pp

**04-Nov-2025 to 07-Nov-2025**

Suite. From £3720 GBP pp

**18-Nov-2025 to 21-Nov-2025**

Suite. From £3720 GBP pp

**22-Sep-2026 to 25-Sep-2026**

Suite. From £3840 GBP pp

**06-Oct-2026 to 09-Oct-2026**

Suite. From £3840 GBP pp

**20-Oct-2026 to 23-Oct-2026**

Suite. From £3840 GBP pp

**03-Nov-2026 to 06-Nov-2026**

Suite. From £3840 GBP pp

**17-Nov-2026 to 20-Nov-2026**

Suite. From £3840 GBP pp



The Small Cruise Ship Collection

[www.small-cruise-ships.com](http://www.small-cruise-ships.com)

**01432 507 280** (within UK)

[info@small-cruise-ships.com](mailto:info@small-cruise-ships.com) | [small-cruise-ships.com](http://small-cruise-ships.com)