

The Small Cruise Ship Collection

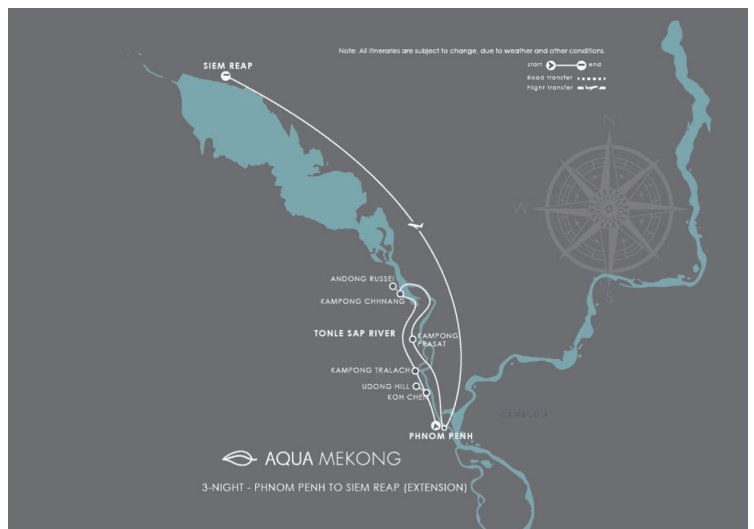
www.small-cruise-ships.com

small-cruise-ships.com

info@small-cruise-ships.com

DISCOVERY EXTENSION CRUISE - FROM PHNOM PENH TO SIEM REAP

A brief and rewarding taste of Mekong's agrarian heartlands. Aboard the luxurious Aqua Mekong, this 3-night river cruise on the Mekong river offers plenty to see and explore for travelers with limited time. Our private fleet of ergonomic, sheltered launch boats put the pleasure and efficiency in exploring Mekong's myriad waterways, making the most of your time in this beautiful region.



ITINERARY

Day 1 CAMBODIA Phnom Penh

Our crew warmly welcomes you aboard the Aqua Mekong with our special refreshers, such as the salted watermelon crush with Thai basil. Together we celebrate our journey towards the heart of the Mekong river with the Khmer Apsara dance performance, a famous centuries-old tradition that is memorialized on the temple walls of Angkor Wat.

Day 2 CAMBODIA Tonle Sap River - Koh Chen - Kampong Prasat

In the silversmith village of Koh Chen, witness artisans produce magnificent royal Khmer silverware. Keep an eye out for their famous silver bowls, regularly chosen by Cambodia's king as gifts for visiting dignitaries. Continuing onwards to Udong, the royal capital from the 17th to 19th century, learn about the life

The Small Cruise Ship Collection

www.small-cruise-ships.com

01432 507 280 (within UK)

info@small-cruise-ships.com | small-cruise-ships.com



The Small Cruise Ship Collection

www.small-cruise-ships.com

small-cruise-ships.com

info@small-cruise-ships.com

of Buddhist monks and interact with them at the Vipassana Dhura Mandala meditation center. In the afternoon, a walking tour of Kampong Prasat offers an intimate look at local ways of life and their riverside habitat.

Day 3 CAMBODIA Tonle Sap River - Kampong Chhnang - Kampong Tralach

As the sun rises on the lush countryside, we head to the residence of traditional potters and palm-sugar producers, whose age-old techniques are still valuable today. On a bicycle or chauffeured tuk-tuk, head into the rice paddies to watch wizened masters scale sky-high palm trees to harvest their fruit, towering over us. Cruise across the glassy water and disembark among the lotuses for an ox-cart ride along the Tonle Sap riverbanks, past lacquered wooden houses where during these dry months residents take refuge in the relative cool of these impromptu outdoor living rooms.

Day 4 CAMBODIA Phnom Penh

We show off the Cambodian capital to our passengers by motorized tuk-tuk, the Royal Palace, Silver Pagoda and the National Museum of Cambodia, home to the world's largest collection of Khmer art. For those who wish, we visit the Tuol Sleng Museum of Genocide or choose to shop at the Russian Market. We bid farewell to 4-night guests who are disembarking in Phnom Penh. Airplane transfers are provided if you would like to continue your Cambodian adventure to Siem Reap and its ancient lost city of Angkor Wat. Guests will be fully escorted by our guides in a luxury car transfer to Phnom Penh Airport. SIEM REAP FLIGHT EXTENSION During low water season, cruise vessels are not able to travel up to the Tonle Sap Lake due to the water level. Airplane transfers via Cambodian Angkor Air are included in your cruise fare in order to continue your Cambodian adventure with us to Siem Reap and its ancient lost city of

Angkor Wat. Requests for flight changes and/or upgrades are not available. Please kindly inform our Reservations team should you choose to remain in Phnom Penh after disembarkation.

Please Note:

Itineraries are subject to change.

The Small Cruise Ship Collection

www.small-cruise-ships.com

01432 507 280 (within UK)

info@small-cruise-ships.com | small-cruise-ships.com



The Small Cruise Ship Collection

www.small-cruise-ships.com

small-cruise-ships.com

info@small-cruise-ships.com

YOUR SHIP: AQUA MEKONG

YOUR SHIP: Aqua Mekong

VESSEL TYPE:

LENGTH:

PASSENGER CAPACITY:

BUILT/REFURBISHED:

Spacious and indulgent, yet intimate enough to feel entirely exclusive, the Aqua Mekong incorporates relaxed yet refined lounging and dining areas and can accommodate a maximum of 40 guests plus crew. Modern navigation technologies and the highest cruise ship standards as well as our experienced river pilot and crew ensure smooth travel and safety on the water. The Aqua Mekong has 20 air conditioned Design Suites, each one a generous 30 square meters (320 square feet), eight with balconies and all created entirely of local materials with the relaxed sophistication and contemporary comforts of a five star resort. Floor to ceiling panoramic windows allow guests to gaze upon the Mekong from the pillow top California king size bed that can be converted upon request into two full twin beds. More captivating views await on the plush, roomy daybed placed by the window wall or for our eight balcony accommodations, outside along with a romantic table for two. Those who wish to keep up on the world beyond these enthralling riverbanks will appreciate the flat screen television and complementary high speed wireless internet. Sunlit indoors and out, the top level Observation Deck aboard the Aqua Mekong has been designed to seamlessly connect guests with the constantly shifting

landscape of floating Vietnamese villages, French colonial church spires and gilded Buddhist stupas along this mighty river, always in the utmost comfort. Whether one chooses to relax in the air conditioned Indoor Lounge, go horizontal under the sun outside at the ship's Outdoor Lounge area or cool off with a plunge in the shimmering pool at the bow side, the Observation Deck ensures that the river always remains in full view. Guests gravitate to the Indoor Lounge in the mornings for ca phe a, Vietnamese coffee poured over ice with sweet condensed milk, between excursions to swap travelers tales and for daily lectures from the expert local guides. Indoor and outdoor bars Indoor dining room and outdoor private dining Private screening room with theater-style seating Private library/games room Outside shaded lounge with single and double day beds Antique and artisanal boutique Lobby lounge Observation deck with outdoor sunbeds Top deck exercise room overlooking the river Infirmary with onboard medical staff Outdoor plunge pool with private cabanas Two spa treatment rooms, each with single and double massage beds . Ten bicycles are provided free of

The Small Cruise Ship Collection

www.small-cruise-ships.com

01432 507 280 (within UK)

info@small-cruise-ships.com | small-cruise-ships.com



The Small Cruise Ship Collection
www.small-cruise-ships.com

small-cruise-ships.com

info@small-cruise-ships.com



charge onboard

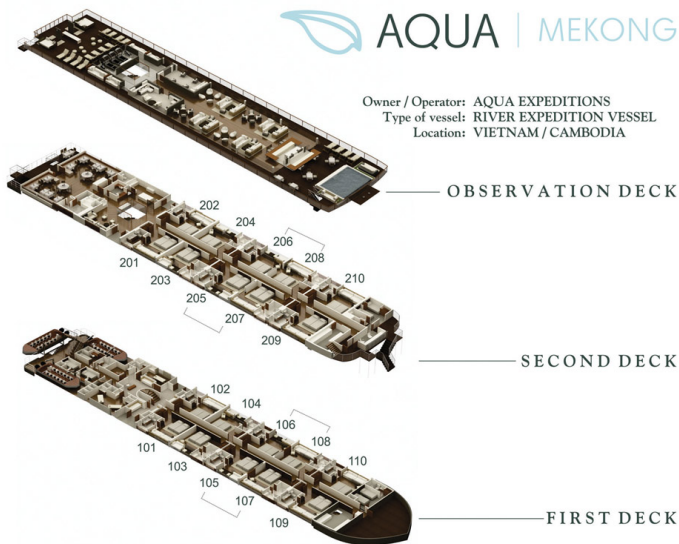
The Small Cruise Ship Collection

www.small-cruise-ships.com

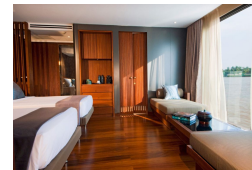
small-cruise-ships.com

info@small-cruise-ships.com

INSIDE YOUR SHIP



Suite. From





The Small Cruise Ship Collection

www.small-cruise-ships.com

small-cruise-ships.com

info@small-cruise-ships.com

PRICING

13-Aug-2024 to 16-Aug-2024

Suite. From £3602 GBP pp

19-Nov-2024 to 22-Nov-2024

Suite. From £3602 GBP pp

03-Dec-2024 to 06-Dec-2024

Suite. From £3602 GBP pp

17-Dec-2024 to 20-Dec-2024

Suite. From £3602 GBP pp

31-Dec-2024 to 03-Jan-2025

Suite. From £3602 GBP pp

28-Jan-2025 to 31-Jan-2025

Suite. From £3675 GBP pp

25-Feb-2025 to 28-Feb-2025

Suite. From £3675 GBP pp

25-Mar-2025 to 28-Mar-2025

Suite. From £3675 GBP pp

22-Apr-2025 to 25-Apr-2025

Suite. From £3675 GBP pp

12-Aug-2025 to 15-Aug-2025

Suite. From £3675 GBP pp

09-Sep-2025 to 12-Sep-2025

Suite. From £3675 GBP pp

16-Dec-2025 to 19-Dec-2025

Suite. From £3675 GBP pp

30-Dec-2025 to 02-Jan-2026

Suite. From £4055 GBP pp

27-Jan-2026 to 30-Jan-2026

Suite. From £3795 GBP pp

24-Feb-2026 to 27-Feb-2026

Suite. From £3795 GBP pp

24-Mar-2026 to 27-Mar-2026

Suite. From £3795 GBP pp

21-Apr-2026 to 24-Apr-2026

Suite. From £3795 GBP pp

11-Aug-2026 to 14-Aug-2026

Suite. From £3795 GBP pp

08-Sep-2026 to 11-Sep-2026

Suite. From £3795 GBP pp

15-Dec-2026 to 18-Dec-2026

Suite. From £3795 GBP pp

29-Dec-2026 to 01-Jan-2027

Suite. From £4175 GBP pp