

The Small Cruise Ship Collection

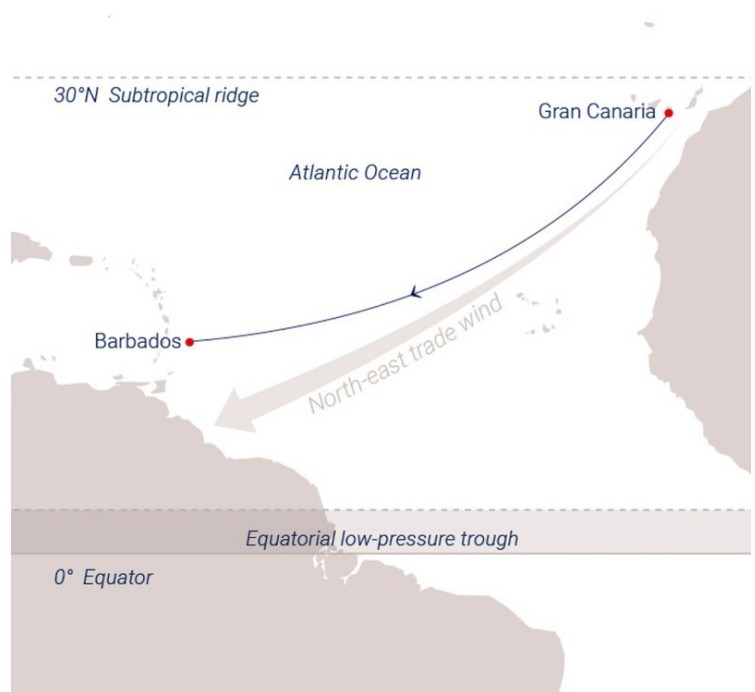
www.small-cruise-ships.com

small-cruise-ships.com

info@small-cruise-ships.com

DREAM OF A LIFETIME: ATLANTIC CROSSING FROM LAS PALMAS TO BRIDGETOWN

Embark on an extraordinary transatlantic journey aboard the luxurious SEA CLOUD II, a majestic three-masted barque with 23 billowing sails. Departing from the sun-kissed shores of Las Palmas, Gran Canaria, you'll spend days immersed in the serene rhythm of the open ocean, riding the historic trade winds once navigated by Columbus. With no ports of call until you reach the vibrant island of Barbados, this voyage offers unparalleled opportunities to unwind, reconnect, and rejuvenate in absolute comfort. Indulge in gourmet dining, wellness experiences, and enriching lectures from onboard experts as you sail across the Atlantic in style.



ITINERARY

Day 1 Las Palmas, Gran Canaria

Departure 10:00 pm

With its black volcano almost 6,561 feet high and endless white beaches along the coastline, the island of Gran Canaria displays a huge variety of landscapes. It's a "continent in miniature" with rugged rock formations, dense pine forests, dry valleys and reservoirs inland, lush vegetation in the north, shimmering dune

The Small Cruise Ship Collection

www.small-cruise-ships.com

01432 507 280 (within UK)

info@small-cruise-ships.com | small-cruise-ships.com



The Small Cruise Ship Collection

www.small-cruise-ships.com

small-cruise-ships.com

info@small-cruise-ships.com

landscapes in the south and weirdly shaped cliffs in the west. Almost half the island has been registered by UNESCO as a Biosphere Reserve. The capital, Las Palmas, is no less colorful, with its port and history stretching back 500 years. The showpiece of this historic old town is the magnificent Santa Ana Cathedral.

Days 2 - 17 Days under full sails

Climbing the rigging, untying ropes, setting sails - today is all about sailing. Time to lean back and relax in the deck chair and watch the passionate crew hoisting the sails by hand.

Day 18 Bridgetown, Barbados

Arrival 8:00 am

More than 300 years of British rule have left their mark. The whole of Bridgetown, Barbados' historic center, with its colonial architecture surrounding Trafalgar Square, is a UNESCO World Heritage Site. A green hilly countryside and endless fields of sugar cane characterize the island's landscape. Old colonial houses are reminders of the high life of the plantation owners, while innumerable colorful chattel houses are evidence of their workers' moveable properties. The sweeping coastline is a picture postcard of fine sandy beaches and turquoise sea surrounded by vibrant coral reefs.

Please note:

Itineraries are subject to change.



The Small Cruise Ship Collection
www.small-cruise-ships.com

01432 507 280 (within UK)

info@small-cruise-ships.com | small-cruise-ships.com

The Small Cruise Ship Collection

www.small-cruise-ships.com

small-cruise-ships.com

info@small-cruise-ships.com

YOUR SHIP: SEA CLOUD II

YOUR SHIP:	Sea Cloud II
VESSEL TYPE:	Tall Ship (Sailing)
LENGTH:	105 metres
PASSENGER CAPACITY:	96
BUILT/REFURBISHED:	2001

Launched in 2001, Sea Cloud II is a stunning vessel, built along traditional lines, but offering deluxe accommodation. She combines timeless elegance of sailing ships of the past with the highest safety standards and the luxurious comfort of modern cruise ships. Just like her legendary sister ship Sea Cloud, the 29,600 square feet of sails is set by hand which is a truly magical sight. Built to accommodate 96 passengers in five star luxury, she offers a range of beautifully appointed suites and cabins which are furnished with great style. All accommodations have outside views and the bathrooms, in light marble, are unusually spacious and extremely comfortable. The finest, carefully chosen fabrics, combined with leather, rattan and other materials, brass and gold, precious woods and marble together create an impressive ensemble. No expense has been spared to create a sympathetic ambience in both the accommodations and public areas and this is reflected throughout the vessel. Public areas include an elegant lounge, library, fitness centre, boutique, lido bar and hospital. The single sitting dining room is airy and modern and the quality of the cuisine and service will be to the highest of standards, as one would expect on a Sea Cloud cruise. Relax on the Lido deck and experience the natural

grandeur of travelling under sail, rekindling memories of a



bygone age.

The Small Cruise Ship Collection
www.small-cruise-ships.com

01432 507 280 (within UK)

info@small-cruise-ships.com | small-cruise-ships.com

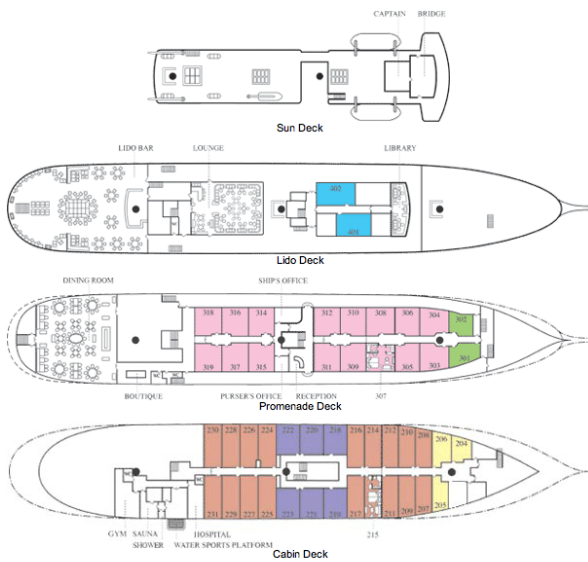
The Small Cruise Ship Collection

www.small-cruise-ships.com

small-cruise-ships.com

info@small-cruise-ships.com

INSIDE YOUR SHIP



Please note that category F cabins have one lower and one upper berth bed

- | | | |
|---------------------------------------------|---------------------------------------------|---------------------------------------------|
| ■ Cat A | ■ Cat B | ■ Cat C |
| ■ Cat D | ■ Cat E | ■ Cat F |

Key

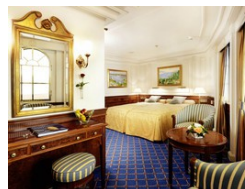
Category A. From



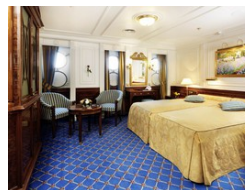
Category B. From



Category C. From



Category D. From



Category E. From

Category F Upper/Lower Beds. From



The Small Cruise Ship Collection

www.small-cruise-ships.com

small-cruise-ships.com

info@small-cruise-ships.com

PRICING

21-Nov-2026 to 08-Dec-2026

Category F Upper/Lower Beds. From	£7405 GBP pp
Category E. From	£8665 GBP pp
Category D. From	£9945 GBP pp
Category C. From	£10419 GBP pp
Category B. From	£11505 GBP pp
Category A. From	£13099 GBP pp