

The Small Cruise Ship Collection

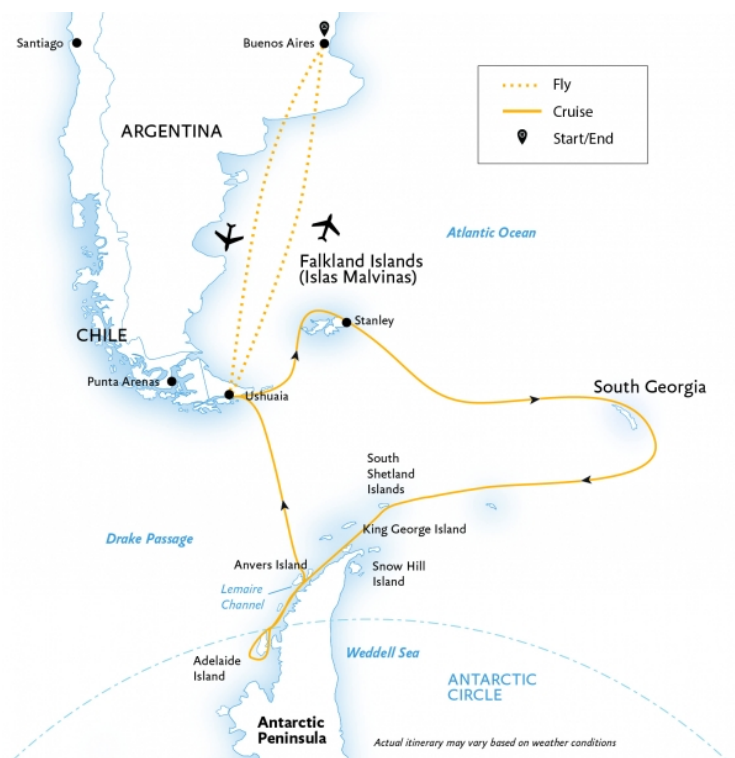
www.small-cruise-ships.com

small-cruise-ships.com

info@small-cruise-ships.com

EPIC ANTARCTICA: CROSSING THE CIRCLE VIA FALKLANDS (MALVINAS) & SOUTH GEORGIA

Explore Buenos Aires and Ushuaia, with a convenient charter flight in between, before embarking on the cruise portion of your once in a lifetime adventure. In this diverse expedition, you'll experience the spectacular flora and fauna of the Falkland Islands (Islas Malvinas) before immersing yourself in the unique history and exquisite, rare wildlife of South Georgia. Whether you're visiting Antarctic research stations, witnessing a sudden minke whale breach from your Zodiac, sharing a magical moment with king penguins, or celebrating crossing the Antarctic Circle with like-minded travelers and crew, you'll know this experience will live on in you forever.



ITINERARY

DAY 1 Buenos Aires, Argentina

You may arrive in Buenos Aires at any time during Day 1 of the itinerary. Upon your arrival at this splendid city, known for its soaring architecture and rich European heritage, you will independently transfer to the group hotel (pre-night hotel included).

DAY 2 Ushuaia, Argentina and Embarkation

The Small Cruise Ship Collection

www.small-cruise-ships.com

01432 507 280 (within UK)

info@small-cruise-ships.com | small-cruise-ships.com



The Small Cruise Ship Collection

www.small-cruise-ships.com

small-cruise-ships.com

info@small-cruise-ships.com

After breakfast at the hotel, the group will transfer to the airport and board our private charter flight to Ushuaia, Argentina. Upon arrival, you will have a little time to explore this quaint port town before heading to the pier. Embarkation will occur in the late afternoon, after which your vessel will sail down the historic Beagle Channel. This famous channel transects the Tierra del Fuego archipelago in the extreme south of South America. Expect an air of anticipation as you depart the next time you see land you'll be in the world's most southern continent!

DAY 3 At Sea

There are many activities to keep you engaged while we're at sea. You can take advantage of the library of books available on your ship, hang out at the bar chatting to other travelers or spend time out on deck, admiring the sea. Your Expedition Team will also conduct a series of presentations to familiarize yourself with how to prepare for Zodiac cruises and shore landings.

DAYS 4 & 5 Falkland Islands (Islas Malvinas)

The Falkland archipelago contains two main islands, East and West, which we will explore by Zodiac excursions and daily landings. These rugged islands have a frontier feel to them, especially at Port Stanley, the largest settlement on the islands. It's an interesting British outpost-type place, where you may just as easily wander into a pub as you will a church or museum. With your camera at hand, our wildlife sightings in the Falklands (Malvinas) should include at least three species of penguins and two endemic bird species: the wren and the Falkland flightless steamer duck. Your team of lecturers and specialists will be sure to educate you on the local flora and fauna so that you have the most memorable time.

DAYS 6 & 7 At Sea

Enroute to South Georgia you'll cross the invisible biological boundary unique to Antarctica: the Antarctic Convergence. This meeting of oceans is what creates the abundance of krill and marine life that attract large cetaceans such as humpback whales.

DAYS 8 TO 11 South Georgia

Evidence of the old whaling and sealing heydays is still found throughout the island. You'll be surprised to learn that whale and seal populations were once decimated here, as today their populations are strong, with massive rookeries to be seen. One significant and historic site that will be of interest is the grave of the great explorer, Sir Ernest Shackleton. Visiting his grave at the settlement of Grytviken, which is also home to an old whaling station and a research station, is a day for reflecting on what it must have been like to be one of the first explorers to this unforgiving, yet beautiful environment. While South Georgia's history is an important attraction to the islands, it is the wildlife that you and your shipmates will likely find most captivating. Often referred to as the Galapagos of the Poles, South Georgia contains an exceptional quantity of wildlife. Each landing you make on South Georgia will open your eyes to a new wonder of wildlife. One day you may see rookeries with a 100 thousand pairs of king penguins waddling on the beach. The next day we may visit another beach with thousands of fur or elephant seals. The grasses, mountains and beaches of South Georgia all play an important role in the breeding and survival of different bird and animal species. Your Expedition Team will be happy to share their knowledge of how these vulnerable relationships all play out on the island.

DAYS 12 & 13 At Sea

The Small Cruise
Ship Collection

www.small-cruise-ships.com

01432 507 280 (within UK)

info@small-cruise-ships.com | small-cruise-ships.com



The Small Cruise Ship Collection

www.small-cruise-ships.com

small-cruise-ships.com

info@small-cruise-ships.com

Antarctica awaits, along with its own penguin and seal species. While you're at sea, you can enjoy quiet time or take in presentations by the Expedition Team, who will cover everything from the history and geology of Antarctica to tips on identifying different species and what makes each of them unique.

[DAYS 14 TO 16 South Shetland Islands and Antarctic Peninsula](#)

The most common reaction to arriving at the White Continent is a sense of reverence and awe. The experience is hard to put into words. You will discover that Antarctica is a land of extremes: at one moment you'll be overcome with a feeling of complete silence and loneliness, the next you'll be laughing at the comical antics of a curious penguin. Glacier hikes, visits to research bases and, of course, communing with seals and penguins are sure to keep you smiling each and every day. Perhaps you'll catch sight of the fearless penguin-eater, the leopard seal, or come eye-to-eye with a curious minke whale while on a Zodiac. Each day and each landing will present a new collection of creatures to entertain you and keep your camera busy. If you find yourself wanting more, then perhaps you'll treat yourself by booking our kayaking Adventure Option (reserve in advance when booking your trip) or if you're feeling a bit overwhelmed, a little shock therapy courtesy of a Polar Plunge might be what you need!

[DAYS 17 & 18 The Antarctic Circle](#)

Crossing the Antarctic Circle is an impressive achievement, as most expeditions to the Peninsula do not come close to reaching this far south. With a toast to the first explorers who ventured here, you can raise a glass of champagne and take pride in knowing you've made it to a part of the world visited by very few people. This is raw Antarctica, home to the midnight sun, with the potential for fantastic iceberg sightings.

[DAYS 19 & 20 Northbound Along the Peninsula](#)

If you haven't had your fill of Antarctic wildlife and icebergs by now, you'll surely be satisfied by the time we return to the Drake Passage. You will continue to journey onto land by Zodiac twice daily as you travel north along the western Antarctic Peninsula. Your Expedition Team will always be on the lookout for species of penguins, seals and whales that may have eluded you on the journey south.

[DAYS 21 & 22 Crossing the Drake Passage](#)

After more than a dozen days of memorable wildlife encounters, your journey home begins. Crossing the Drake is your unofficial rite of passage, putting a final stamp of approval on your Antarctic adventure.

[DAY 23 Disembark in Ushuaia & Fly to Buenos Aires, Argentina](#)

We will arrive in Ushuaia in the morning after breakfast. After disembarkation, we will taste a little of Patagonia by touring Tierra del Fuego National Park before we transfer to the airport for the return group charter flight to Buenos Aires.

[Please Note:](#)

Embracing the unexpected is part of the legacy and excitement of expedition travel. There are no guarantees that we can achieve everything we set out to accomplish. A measure of flexibility is something all of us must bring to a voyage. There are nearly 200 recognized sites in the Antarctic Peninsula and South Shetlands and the places mentioned above may be changed to others equally as interesting.

The Small Cruise Ship Collection
www.small-cruise-ships.com

01432 507 280 (within UK)

info@small-cruise-ships.com | small-cruise-ships.com

The Small Cruise Ship Collection

www.small-cruise-ships.com

small-cruise-ships.com

info@small-cruise-ships.com

YOUR SHIP: OCEAN ENDEAVOUR

YOUR SHIP: Ocean Endeavour

VESSEL TYPE:

LENGTH:

PASSENGER CAPACITY:

BUILT/REFURBISHED:

Sailing with a maximum of 198-passengers, Ocean Endeavour is the perfect vessel for expedition cruising. Outfitted with twenty Zodiacs, advanced navigation equipment, multiple lounges and a top deck observation room, she is purpose-built for passenger experiences in remote environments. The Ocean Endeavour boasts a 1B ice class, enabling her to freely explore throughout the Arctic summer. Launched in 1982, she has had numerous upgrades, most recently in 2010 and 2014. At 137 meters (450ft) in length, Ocean Endeavour has plenty of interior and exterior space. Enjoy multiple decks offering comfortable lounge chairs, outdoor dining, a swimming pool, sauna and even a hot tub! The spacious interiors allow for multiple workshops and presentations to occur simultaneously. Community is at the heart of Adventure Canada's expedition experience. We gather together to learn, enjoy a drink, sing a song or share a yarn - connecting with one and other. The three lounges aboard Ocean Endeavour are fantastic public spaces for seminars, events and dialogue. The Ocean Endeavour's private spaces are stylish and comfortable. All cabins have private washroom facilities, a phone for internal calls, radio, TV and air-conditioning. There are a variety of cabin categories available ranging from 9-30 m2

(100-320 sq ft). Ocean Endeavour's crew is experienced, and friendly. Her shallow draft and maneuverability allow her to access isolated fiords, bays and secluded communities. The stylish vessel is at home among the glorious settings we seek. Enjoy the class and comfort of a boutique hotel, while venturing to some of the world's last great frontiers aboard the Ocean



Endeavour!



The Small Cruise Ship Collection

www.small-cruise-ships.com



small-cruise-ships.com

info@small-cruise-ships.com

INSIDE YOUR SHIP

CABIN CATEGORIES

CATEGORY 10 | SUITE

Deck seven forward-facing picture windows, unobstructed view; matrimonial bed, private bath with full tub, refrigerator – approx. 310 sq. ft.

CATEGORY 9 | JUNIOR SUITE

Deck five (picture windows, unobstructed view); matrimonial bed, sitting area – approx. 270 sq. ft., deck seven forward-facing picture windows, unobstructed; matrimonial bed, private bath with full tub, sitting area – approx. 290 sq. ft.) private bath, refrigerator

CATEGORY 8 | SUPERIOR TWIN

Deck five (two picture windows, unobstructed view; two lower berths, sitting area – approx. 270 sq. ft.), deck seven forward-facing picture windows, unobstructed; matrimonial bed, private bath with full tub – approx. 180 sq. ft.), deck seven midship (picture windows, partial obstruction; matrimonial bed – approx. 190 sq. ft.) private bath, refrigerator

CATEGORY 7 | SELECT TWIN

Deck five (picture windows, unobstructed view, two lower berths OR matrimonial bed, approx. 170 sq. ft.) and deck eight (over-size windows, partial obstruction; matrimonial bed – approx. 145 sq. ft.) private bath, refrigerator

CATEGORY 6 | COMFORT TWIN

Deck four (two port-hole windows, unobstructed view; two lower berths OR matrimonial bed – approx. 175 sq. ft.), deck seven (picture window, partial obstruction); two lower berths – approx. 135 sq. ft.) and deck eight (picture windows, obstructed view; matrimonial bed – approx. 160 sq. ft.) private bath, refrigerator

CATEGORY 5 | MAIN TWIN

Deck five (picture window, unobstructed view; two lower berths, private bath – approx. 115 sq. ft.

CATEGORY 4 | EXTERIOR TWIN

Deck four (port-hole window, unobstructed view; two lower berths, private bath – approx. 100 sq. ft. (Twin) / 90 sq. ft. (Single)

CATEGORY 3 | INTERIOR TWIN

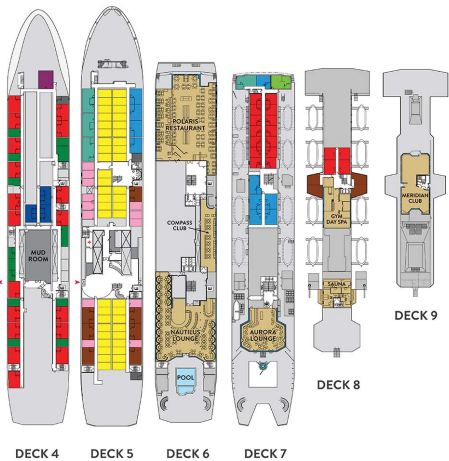
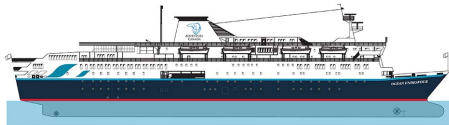
Deck five (interior cabin, two lower berths, private bath – approx. 125 sq. ft. (Twin) / 110 sq. ft. (Single)

CATEGORY 2 | TRIPLE

Deck four (interior cabin, three lower berths, two private baths – approx. 200 sq. ft.

CATEGORY 1 | QUAD

Deck four (interior cabin, four lower berths, private bath (separate shower room and powder room) – approx. 240 sq. ft.





The Small Cruise Ship Collection

www.small-cruise-ships.com



small-cruise-ships.com

info@small-cruise-ships.com

PRICING

ADDITIONAL CHARGES:

Charter Flight 800 USD pp



01432 507 280 (within UK)

info@small-cruise-ships.com | small-cruise-ships.com