

The Small Cruise Ship Collection

www.small-cruise-ships.com

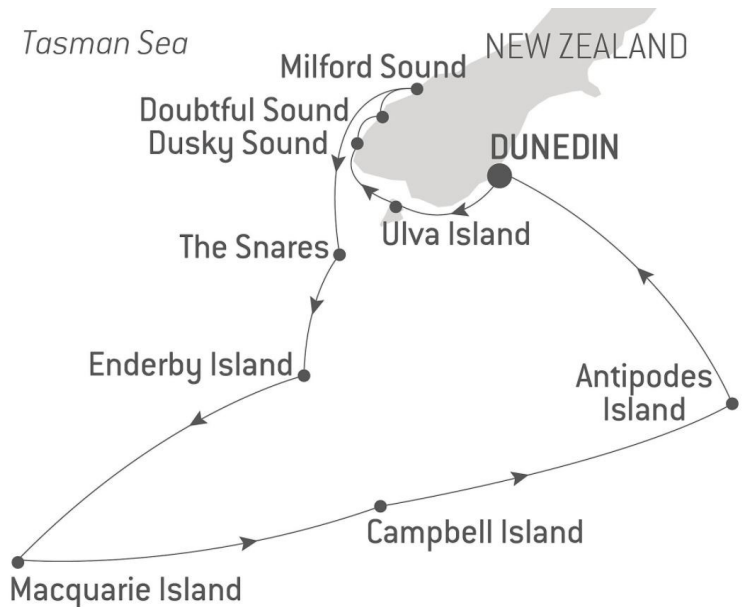
small-cruise-ships.com

info@small-cruise-ships.com

EXPEDITION TO NEW ZEALAND'S SUBANTARCTIC ISLANDS

PONANT invites you to discover the wild and untouched beauty of New Zealand's Fiordlands and Subantarctic Islands. Set sail on a 15-day expedition cruise with an exceptional itinerary and allow yourself to be transported to another world where the wildlife rules and you are but visitors. From Dunedin, the Edinburgh of New Zealand that is a lively student city, with a rich Scottish Heritage, you will reach Ulva Island. This first call on Paterson Inlet is renowned as an extraordinary nature sanctuary. Our team of naturalists and destination experts will be on hand to show you some of the rarest bird species in the world. You will follow your voyage towards Fiordland National Park, which is part of Te Wahipounamu, a UNESCO World Natural Heritage Site, home to the majestic Dusky Sound, Doubtful Sound and Milford Sound. You will enjoy a Zodiac® cruise and spot Fiordland Crested penguins, get up close to spectacular waterfalls and enjoy the vistas from the ship's outer decks. You will then head to the Snares Islands, a haven for the country's wildlife with some 35,000 endemic Snares Gorfous and a colony of around 1,000 fur seals before discovering Macquarie Island, part of Australia. Often described as the "Galapagos of the Southern Ocean", the Subantarctic Islands of New Zealand are among some of the best preserved and protected environments on the planet where you will experience scenery and wildlife like nowhere else on earth. You will be captivated by the breathtaking scenery, meadows of megaherbs forming a colourful tapestry and towering cliffs buffeted by the power of the waves and wind - the playground of the Royal Albatross. With a myriad of penguins patrolling the black sandy beaches it is truly a nature-lover's dream come true. Your ship will finally

reach Dunedin, the end of



your voyage.

ITINERARY

Day 1 DUNEDIN

Dunedin is New Zealand's oldest city and is often referred to as the Edinburgh of New Zealand. This city of the south, wears its Scottish heritage with pride. The city contains some of the best preserved Victorian and Edwardian architecture in the Southern Hemisphere. The Silverpeaks hinterland to the North West provides a picturesque backdrop and The Otago Peninsula,

The Small Cruise Ship Collection

www.small-cruise-ships.com

01432 507 280 (within UK)

info@small-cruise-ships.com | small-cruise-ships.com



The Small Cruise Ship Collection

www.small-cruise-ships.com

small-cruise-ships.com

info@small-cruise-ships.com

which lies within the city boundaries, has internationally renowned wildlife reserves, including the only mainland breeding colony of Northern Royal Albatross.

Day 2 ULVA ISLAND

Ulva Island (Te Wharawhara) is the largest of 20 islands within Paterson Inlet, Stewart Island, with an area of approx. 270 hectares. The island has never been logged and was declared pest free in 1997, becoming one of the few predator-free sanctuaries in New Zealand. The island is now a haven for many species of birds and plants that are rare, or have died out, on the mainland of New Zealand. Bird species regularly encountered include: the flightless Stewart Island Weka, South Island saddleback, yellowhead and Stewart Island robin. Ulva Island is not only a bird enthusiast's paradise, it is also one of the few offshore islands with a largely undisturbed podocarp forest. Well-maintained tracks offer easy walking for most people providing a unique opportunity to see rare birds and plants at close quarters in a safe environment.

Day 3 DUSKY SOUND & DOUBTFUL SOUND

Dusky Sound is one of the most isolated fjords in Fiordland National Park. This huge, protected natural zone situated in the south-west quarter of New Zealand's South Island is listed as UNESCO World Heritage. The sheer cliffs, waterfalls, shimmering lakes and primitive forests here are each more beautiful than the next. These spectacular landscapes sculpted by successive glaciations are a source of endless wonder. In 1773, the British navigator James Cook spent a few weeks at Dusky Sound, as

demonstrated by a plaque that can be seen at Astronomer's Point. During your sailing, observe the richness of the local wildlife: cormorants, seagulls, New Zealand fur seals, but also Fiordland crested penguins, a rare and endemic species. Weather and time permitting you may explore the Sound from our fleet of Zodiac®. Referred to as the "Sound of Silence", there is a secluded serenity that surrounds Doubtful Sound in contrast with the better-known Milford Sound. Both are part of the Fiordland National Park, a UNESCO World Heritage Site. Lieutenant James Cook named 'Doubtful Harbour' in 1770 as he was uncertain if it was navigable under sail. Doubtful Sound is the deepest of the fiords with a maximum depth of 421 m. It contains three distinct 'arms' and several outstanding waterfalls in the area from Deep Cove to the open ocean. Your ship will spend time navigating around Secretary Island through both Thompson and Doubtful Sounds. You will enjoy the spectacular scenery from the outer decks.

Day 4 MILFORD SOUND

Milford Sound fiord is among one of the most beautiful natural sites in New Zealand. So much beauty will quite simply take your breath away. Located on the south-west coast of South Island, in the Fiordland National Park, this sumptuous inlet carved out by glaciers advances over at least 15 kilometres inland, in the Southern Alps. Majestic cliffs seem to surge out of the dark waters, rising several hundred metres high: an abrupt relief from where impressive waterfalls cascade.

Day 5 THE SNARES

The Small Cruise Ship Collection
www.small-cruise-ships.com

01432 507 280 (within UK)

info@small-cruise-ships.com | small-cruise-ships.com



The Small Cruise Ship Collection

www.small-cruise-ships.com

small-cruise-ships.com

info@small-cruise-ships.com

Amongst the Subantarctic Islands of New Zealand, the Snares have the distinction of being the only forested group without introduced mammals, not even mice. Consequently, it is a remarkable haven for wildlife. The island boasts more nesting seabirds than the entire realm of the British Isles. Over 2 million Sooty Shearwaters breed here in the summer months. Four species of Albatross are listed as breeding on the Snares along with 35,000 endemic Snares crested penguins. There are also approximately 1,000 New Zealand fur seals and 500 New Zealand sea lions. Landing on the Snares is prohibited. If time and weather permit, you will have the opportunity to explore the coastal environments and view the prolific wildlife from our fleet of Zodiac®.

Day 6 ENDERBY ISLAND, AUCKLAND ISLANDS & MUSGRAVE INLET, AUCKLAND ISLANDS

Enderby Island is situated off the North Eastern tip of Auckland Island and is the second largest Island in the group. The eradication of introduced species in 1994 has seen a significant increase in the abundance of the native flora and fauna compared to the main Auckland Island. It has become a stronghold for the rare yellow-eyed penguin and the primary breeding location of the New Zealand Sea Lion. You will head ashore and have the opportunity to undertake a guided walk on the Northern Cliffs track as well as spend time viewing the New Zealand Sea Lion colony. There is also the opportunity to undertake a zodiac tour around the coastline of Enderby Island in search of the Auckland Island Teal and other endemic species. The Auckland Islands are the largest, highest and biologically richest of the five groups of Subantarctic Islands.

They have been identified as an Important Bird Area (IBA) by BirdLife International as they hold important seabird breeding colonies. The flora of the Auckland Islands is fascinatingly diverse with over 233 species of vascular plant. Musgrave Inlet is a picturesque bay on the eastern side of Auckland Island. Its sheer cliffs have protected the endemic flora from the introduced species, providing one of the best floral displays in the entire Island group. Landing in Musgrave Inlet is prohibited. If time and weather permits, you will have the opportunity to view the spectacular flora and fauna from our fleet of zodiacs.

Day 7 AT SEA

During your day at sea, make the most of the many services and activities on board. Treat yourself to a moment of relaxation in the spa or stay in shape in the fitness centre. Depending on the season, let yourself be tempted by the swimming pool or a spot of sunbathing. This day without a port of call will also be an opportunity to enjoy the conferences or shows proposed on board, to do some shopping in the boutique or to meet the PONANT photographers in their dedicated space. As for lovers of the open sea, they will be able to visit the ship's upper deck to admire the spectacle of the waves and perhaps be lucky enough to observe marine species. A truly enchanted interlude, combining comfort, rest and entertainment.

Day 8 SANDY BAY, MACQUARIE ISLAND

Macquarie Island, or "Macca" as it is colloquially known, was inscribed on the UNESCO World Heritage List in 1997 as a site of major geoconservation significance, being the only island in

The Small Cruise Ship Collection

www.small-cruise-ships.com

01432 507 280 (within UK)

info@small-cruise-ships.com | small-cruise-ships.com



The Small Cruise Ship Collection

www.small-cruise-ships.com

small-cruise-ships.com

info@small-cruise-ships.com

the world composed entirely of oceanic crust and rocks from the mantle. It is an island of unique natural diversity and one of the truly remarkable places on earth. Sandy Bay is located on the East Coast of the Island and is home to significant Royal and King Penguin rookeries as well as a breeding colony of Southern Elephant Seals. You will have the opportunity to land ashore in Sandy Bay to view both the King and Royal colonies as well as the other prolific wildlife in the Bay.

Day 9 ANARE STATION, MACQUARIE ISLAND

Long celebrated as one of the wonder spots of the world, the Macquarie Island is an island of great beauty and outstanding natural diversity, a breeding place for more than 3.5 million seabirds, most of which are penguins. There are four species breeding on Macquarie Island; Royals, Kings, Gentoos and Rock Hoppers. There are also three types of fur seals and one seventh of the world's population of elephant seals breeding on the Island. In 1948 The Australian National Antarctic Research Expeditions (ANARE) established its expedition headquarters on Macquarie Island. You will have the opportunity to undertake a guided walk around the ANARE Station to view the facility and the prolific wildlife that resides here.

Day 10 AT SEA

During your day at sea, make the most of the many services and activities on board. Treat yourself to a moment of relaxation in the spa or stay in shape in the fitness centre. Depending on the season, let yourself be tempted by the swimming pool or a spot of sunbathing. This day without a port of call will also be an

opportunity to enjoy the conferences or shows proposed on board, to do some shopping in the boutique or to meet the PONANT photographers in their dedicated space. As for lovers of the open sea, they will be able to visit the ship's upper deck to admire the spectacle of the waves and perhaps be lucky enough to observe marine species. A truly enchanted interlude, combining comfort, rest and entertainment.

Day 11 CAMPBELL ISLAND

Campbell Island is the most southerly of the five New Zealand subantarctic groups. Described by the English botanist Joseph Hooker as having a "flora display second to none outside the tropics." It is known for its megaherbs, herbaceous, perennial wildflowers characterised by their great size, with huge leaves and very colourful flowers, which have developed as an adaptation to the harsh weather conditions on the islands. Campbell Island is also home to six species of albatross, and several critically endangered endemic birds including the Campbell Island teal and snipe. You will have the opportunity to undertake a guided walk on the Col Lyell Saddle boardwalk as well as undertake a zodiac tour around the coastline of Perseverance Harbour.

Day 12 AT SEA

During your day at sea, make the most of the many services and activities on board. Treat yourself to a moment of relaxation in the spa or stay in shape in the fitness centre. Depending on the season, let yourself be tempted by the swimming pool or a spot of sunbathing. This day without a port of call will also be an

The Small Cruise Ship Collection
www.small-cruise-ships.com

01432 507 280 (within UK)

info@small-cruise-ships.com | small-cruise-ships.com



The Small Cruise Ship Collection

www.small-cruise-ships.com

small-cruise-ships.com

info@small-cruise-ships.com

opportunity to enjoy the conferences or shows proposed on board, to do some shopping in the boutique or to meet the PONANT photographers in their dedicated space. As for lovers of the open sea, they will be able to visit the ship's upper deck to admire the spectacle of the waves and perhaps be lucky enough to observe marine species. A truly enchanted interlude, combining comfort, rest and entertainment.

Day 13 ANTIPODES ISLANDS

The volcanic islands of the Antipodes Island group lie 860 km to the southeast of New. The group belongs to the New Zealand's Subantarctic Islands and consists of one main island, Antipodes Island, Bollons Island to the north, and numerous small islets and stacks. The islands are home to a wide variety of sea and land bird species including two species of parakeet. The seabirds range from the tiny storm petrel to the Antipodean wandering albatross, one of the largest flying birds in the world. There are also significant populations of erect-crested and rock hopper penguins. Landing on the Antipodes is prohibited. If time and weather permit, you will have the opportunity to explore the coastal environments and view the prolific wildlife from our fleet of zodiacs.

Day 14 AT SEA

During your day at sea, make the most of the many services and activities on board. Treat yourself to a moment of relaxation in the spa or stay in shape in the fitness centre. Depending on the season, let yourself be tempted by the swimming pool or a spot of sunbathing. This day without a port of call will also be an

opportunity to enjoy the conferences or shows proposed on board, to do some shopping in the boutique or to meet the PONANT photographers in their dedicated space. As for lovers of the open sea, they will be able to visit the ship's upper deck to admire the spectacle of the waves and perhaps be lucky enough to observe marine species. A truly enchanted interlude, combining comfort, rest and entertainment.

Day 15 DUNEDIN

Dunedin is New Zealand's oldest city and is often referred to as the Edinburgh of New Zealand. This city of the south, wears its Scottish heritage with pride. The city contains some of the best preserved Victorian and Edwardian architecture in the Southern Hemisphere. The Silverpeaks hinterland to the North West provides a picturesque backdrop and The Otago Peninsula, which lies within the city boundaries, has internationally renowned wildlife reserves, including the only mainland breeding colony of Northern Royal Albatross.

Please Note:

Itineraries are subject to change.

The Small Cruise Ship Collection

www.small-cruise-ships.com

small-cruise-ships.com

info@small-cruise-ships.com

YOUR SHIP: LE SOLEAL

YOUR SHIP:

Le Soleal

VESSEL TYPE:

LENGTH:

PASSENGER CAPACITY:

BUILT/REFURBISHED:

Luxury Small Ship A sleek silhouette, a welcoming intimate atmosphere, and the same philosophy that has made her sister ships, L'Austral, Lyrial and Le Boreal, such a success. This magnificent yacht of only 132 staterooms and suites, all with balconies, has contemporary decor inspired by the luxury yachting world, with fluid lines and a modern colour scheme combining natural wood with shades of grey and white. White Corian counters in the lobby contrast with the warmth of leather to recall a boat's hull, while the central sculpture of enamelled pieces takes its inspiration from the sea. In the lounge bar, the carpet picks up a tennis stripe theme symbolising a certain idea of cruising, one synonymous with French elegance and a chic seaside spirit. Wheelchairs 3 specially adapted wheelchair cabins (Deck 3 = Superior cabin no. 307, no balcony, Deck 4 = Prestige Cabin no. 407 - with balcony and Deck 5 = Prestige Cabin no 509, with balcony) and lifts to all decks/areas. Read about our recent Ponant cruise to Antarctica Please click the following links to read more about Ponant and the other Ponant cruise ships.



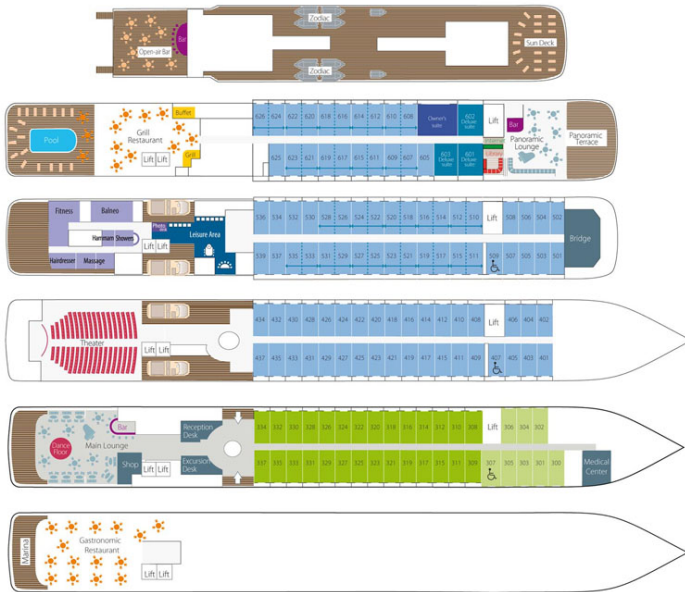
The Small Cruise Ship Collection

www.small-cruise-ships.com

small-cruise-ships.com

info@small-cruise-ships.com

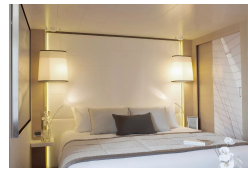
INSIDE YOUR SHIP



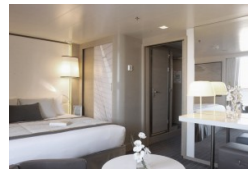
DeLuxe Stateroom



Deluxe Stateroom



Deluxe Suite



Owner's Suite



Prestige Deck 4

Prestige Deck 5

Prestige Deck 5 Suite

Prestige Deck 6

Prestige Deck 6 Suite

Prestige Stateroom - Deck 4

Prestige Stateroom - Deck 5

Prestige Stateroom - Deck 6

Prestige Suite - Deck 5

Prestige Suite - Deck 6

The Small Cruise Ship Collection

www.small-cruise-ships.com

01432 507 280 (within UK)

info@small-cruise-ships.com | small-cruise-ships.com

The Small Cruise Ship Collection

www.small-cruise-ships.com

small-cruise-ships.com

info@small-cruise-ships.com

PRICING

29-Dec-2025 to 12-Jan-2026

Prestige Stateroom - Deck 6	£12609 GBP pp
Superior Stateroom	£10575 GBP pp
DeLuxe Stateroom	£11409 GBP pp
Prestige Suite - Deck 5	£19425 GBP pp
Prestige Suite - Deck 6	£20499 GBP pp
Prestige Stateroom - Deck 5	£12245 GBP pp
Owner's Suite	£30248 GBP pp
Prestige Stateroom - Deck 4	£12005 GBP pp
Deluxe Suite	£18585 GBP pp

12-Jan-2026 to 26-Jan-2026

Prestige Suite - Deck 6	£18009 GBP pp
DeLuxe Stateroom	£10025 GBP pp
Deluxe Suite	£16335 GBP pp
Superior Stateroom	£9289 GBP pp
Prestige Stateroom - Deck 4	£10555 GBP pp
Prestige Suite - Deck 5	£17065 GBP pp
Prestige Stateroom - Deck 6	£11075 GBP pp
Owner's Suite	£26494 GBP pp
Prestige Stateroom - Deck 5	£10765 GBP pp

11-Jan-2027 to 25-Jan-2027

Prestige Deck 5	£10669 GBP pp
Prestige Deck 5 Suite	£16895 GBP pp
Prestige Deck 6	£10975 GBP pp
Prestige Deck 6 Suite	£17835 GBP pp
Superior Stateroom	£9215 GBP pp
Prestige Deck 4	£10465 GBP pp
Deluxe Suite	£16175 GBP pp
Deluxe Stateroom	£9935 GBP pp

ADDITIONAL CHARGES:

Port Taxes 1040 AUD pp