

The Small Cruise Ship Collection

www.small-cruise-ships.com

small-cruise-ships.com

info@small-cruise-ships.com

EXPLORER EXTENSION CRUISE - FROM PHNOM PENH TO SIEM REAP

Go deeper into the mesmerising culture and life the Mekong river. Every activity onboard the five-star Aqua Mekong brings a fresh perspective of culture and life in Cambodia and Vietnam, so the 4-night itinerary is an ideal addition to any existing travel itinerary of the region. Included are twice-daily excursions (walk, bike, kayak or ride a tuk-tuk) and expert-guided visits to Mekong River's dynamic riverside markets, villages, and holy sites.



ITINERARY

Day 1 CAMBODIA Phnom Penh

Our crew warmly welcomes you aboard the Aqua Mekong with our special refreshers, such as the salted watermelon crush with Thai basil. Together we celebrate our journey towards the heart of the Mekong river with the Khmer Apsara dance performance, a famous centuries-old tradition that is memorialized on the temple walls of Angkor Wat.

Day 2 CAMBODIA Koh Chen - Kampong Prasat

In the silversmith village of Koh Chen, witness artisans produce magnificent royal Khmer silverware. Keep an eye out for their famous silver bowls, regularly chosen by Cambodia's king as gifts for visiting dignitaries. Continuing onwards to Udong, the royal capital from the 17th to the 19th century, learn about the

The Small Cruise Ship Collection

www.small-cruise-ships.com

01432 507 280 (within UK)

info@small-cruise-ships.com | small-cruise-ships.com



The Small Cruise Ship Collection

www.small-cruise-ships.com

small-cruise-ships.com

info@small-cruise-ships.com

life of Buddhist monks and interact with them at the Vipassana Dhura Mandala meditation center. In the afternoon, a walking tour of Kampong Prasat offers an intimate look at local ways of life and their riverside habitat.

Day 3 CAMBODIA Kampong Chhnang - Kampong Tralach

As the sun rises on the lush countryside, we head to the residence of traditional potters and palm-sugar producers, whose age-old techniques are still valuable today. On a bicycle or chauffeured tuk-tuk, head into the rice paddies to watch wizened masters scale sky-high palm trees to harvest their fruit. towered over us. Cruise across the glassy water and disembark among the lotuses for an ox-cart ride along the Tonle Sap riverbanks, past lacquered wooden houses where during these dry months residents take refuge in the relative cool of these impromptu outdoor living rooms.

Day 4 CAMBODIA Koh Oknha Tey - Preah Prosop

Sail into the legendary land of the glittering former Khmer empire. At Koh Oknha Tey, watch how Khmer artisans dye and weave krama, a silk scarf loved by locals and a treasured cultural asset that dates back from the Angkor period. Then, cycle the idyllic riverbank past Buddhist temples and traditional thatched and stilted homes and see farmers with white Brahman oxen working the rice fields. After lunch, board Aqua Mekong's private fleet of launch boats and head towards the tamarind trees of Preah Prosop, a remote village little changed over several lifetimes and home to a startlingly colorful Buddhist temple.

Day 5 CAMBODIA Phnom Penh

We show off the Cambodian capital to our passengers by motorized tuk-tuk, the Royal Palace, Silver Pagoda and the

National Museum of Cambodia, home to the world's largest collection of Khmer art. For those who wish, we visit the Tuol Sleng Museum of Genocide or choose to shop at the Russian Market. Airplane transfers are provided if you would like to continue your Cambodian adventure to Siem Reap and its ancient lost city of Angkor Wat. Guests will be fully escorted by our guides in a luxury car transfer to Phnom Penh Airport. SIEM REAP FLIGHT EXTENSION During low water season, cruise vessels are not able to travel up to the Tonle Sap Lake due to the water level. Airplane transfers via Cambodian Angkor Air are included in your cruise fare in order to continue your Cambodian adventure with us to Siem Reap and its ancient lost city of Angkor Wat. Requests for flight changes and/or upgrades are not available. Please kindly inform our Reservations team should you choose to remain in Phnom Penh after disembarkation.

Please Note:

All itineraries are subject to change, due to weather and other conditions_

The Small Cruise Ship Collection

www.small-cruise-ships.com

01432 507 280 (within UK)

info@small-cruise-ships.com | small-cruise-ships.com



The Small Cruise
Ship Collection

www.small-cruise-ships.com

small-cruise-ships.com

info@small-cruise-ships.com

YOUR SHIP: AQUA MEKONG

YOUR SHIP: Aqua Mekong

VESSEL TYPE:

LENGTH:

PASSENGER CAPACITY:

BUILT/REFURBISHED:

Spacious and indulgent, yet intimate enough to feel entirely exclusive, the Aqua Mekong incorporates relaxed yet refined lounging and dining areas and can accommodate a maximum of 40 guests plus crew. Modern navigation technologies and the highest cruise ship standards as well as our experienced river pilot and crew ensure smooth travel and safety on the water. The Aqua Mekong has 20 air conditioned Design Suites, each one a generous 30 square meters (320 square feet), eight with balconies and all created entirely of local materials with the relaxed sophistication and contemporary comforts of a five star resort. Floor to ceiling panoramic windows allow guests to gaze upon the Mekong from the pillow top California king size bed that can be converted upon request into two full twin beds. More captivating views await on the plush, roomy daybed placed by the window wall or for our eight balcony accommodations, outside along with a romantic table for two. Those who wish to keep up on the world beyond these enthralling riverbanks will appreciate the flat screen television and complementary high speed wireless internet. Sunlit indoors and out, the top level Observation Deck aboard the Aqua Mekong has been designed to seamlessly connect guests with the constantly shifting

landscape of floating Vietnamese villages, French colonial church spires and gilded Buddhist stupas along this mighty river, always in the utmost comfort. Whether one chooses to relax in the air conditioned Indoor Lounge, go horizontal under the sun outside at the ship's Outdoor Lounge area or cool off with a plunge in the shimmering pool at the bow side, the Observation Deck ensures that the river always remains in full view. Guests gravitate to the Indoor Lounge in the mornings for ca phe a, Vietnamese coffee poured over ice with sweet condensed milk, between excursions to swap travelers tales and for daily lectures from the expert local guides. Indoor and outdoor bars Indoor dining room and outdoor private dining Private screening room with theater-style seating Private library/games room Outside shaded lounge with single and double day beds Antique and artisanal boutique Lobby lounge Observation deck with outdoor sunbeds Top deck exercise room overlooking the river Infirmary with onboard medical staff Outdoor plunge pool with private cabanas Two spa treatment rooms, each with single and double massage beds . Ten bicycles are provided free of

The Small Cruise
Ship Collection

www.small-cruise-ships.com

01432 507 280 (within UK)

info@small-cruise-ships.com | small-cruise-ships.com



The Small Cruise Ship Collection
www.small-cruise-ships.com

small-cruise-ships.com

info@small-cruise-ships.com



charge onboard

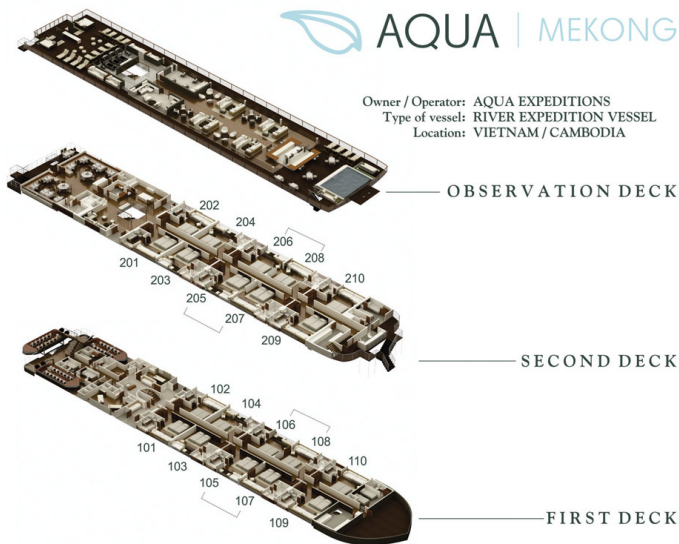
The Small Cruise Ship Collection

www.small-cruise-ships.com

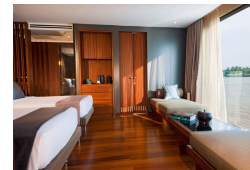
small-cruise-ships.com

info@small-cruise-ships.com

INSIDE YOUR SHIP



Suite. From



The Small Cruise Ship Collection

www.small-cruise-ships.com

01432 507 280 (within UK)

info@small-cruise-ships.com | small-cruise-ships.com



The Small Cruise Ship Collection

www.small-cruise-ships.com

small-cruise-ships.com

info@small-cruise-ships.com

PRICING

16-Aug-2024 to 20-Aug-2024

Suite. From £4803 GBP pp

22-Nov-2024 to 26-Nov-2024

Suite. From £4803 GBP pp

06-Dec-2024 to 10-Dec-2024

Suite. From £4803 GBP pp

20-Dec-2024 to 24-Dec-2024

Suite. From £4803 GBP pp

03-Jan-2025 to 07-Jan-2025

Suite. From £5405 GBP pp

31-Jan-2025 to 04-Feb-2025

Suite. From £4899 GBP pp

28-Feb-2025 to 04-Mar-2025

Suite. From £4899 GBP pp

28-Mar-2025 to 01-Apr-2025

Suite. From £4899 GBP pp

15-Aug-2025 to 19-Aug-2025

Suite. From £4899 GBP pp

12-Sep-2025 to 16-Sep-2025

Suite. From £4899 GBP pp

19-Dec-2025 to 23-Dec-2025

Suite. From £5405 GBP pp

02-Jan-2026 to 06-Jan-2026

Suite. From £5059 GBP pp

30-Jan-2026 to 03-Feb-2026

Suite. From £5059 GBP pp

27-Feb-2026 to 03-Mar-2026

Suite. From £5059 GBP pp

27-Mar-2026 to 31-Mar-2026

Suite. From £5059 GBP pp

14-Aug-2026 to 18-Aug-2026

Suite. From £5059 GBP pp

11-Sep-2026 to 15-Sep-2026

Suite. From £5059 GBP pp

18-Dec-2026 to 22-Dec-2026

Suite. From £5565 GBP pp

The Small Cruise Ship Collection

www.small-cruise-ships.com

01432 507 280 (within UK)

info@small-cruise-ships.com | small-cruise-ships.com