

The Small Cruise Ship Collection

www.small-cruise-ships.com

small-cruise-ships.com

info@small-cruise-ships.com

FROM FIJI TO BALI LUXURY CRUISE

Leaving from Lautoka, in Fiji, offers you a unique cruise of 21 days exploring six magnificent countries in the South Seas. On board a ship with a decidedly Polynesian ambience especially designed to navigate the shallow turquoise waters, set off to discover untamed nature on the paradise islands of Vanuatu, the Solomons, Papua New Guinea, East Timor and Indonesia.



ITINERARY

Day 1 - Lautoka, Viti Levu Island

Lautoka is the second largest city of Fiji. Located on the western side of the island of Viti Levu, 24 kilometres north of Nadi. Lying in the heart of Fiji's sugar cane growing region, it is known as the Sugar City. Lautoka is the gateway to Fiji's "Sun coast" a land of abundant sunshine, azure skies and dramatic grass-covered peaks chequered with sugarcane fields, rural villages and quaint market towns.

Days 2 and 3 - At Sea

During your journey at sea, make the most of the many services and activities on board. Treat yourself to a moment of relaxation in the spa or stay in shape in the fitness centre. Depending on

The Small Cruise Ship Collection

www.small-cruise-ships.com

01432 507 280 (within UK)

info@small-cruise-ships.com | small-cruise-ships.com



The Small Cruise Ship Collection

www.small-cruise-ships.com

small-cruise-ships.com

info@small-cruise-ships.com

the season, let yourself be tempted by the swimming pool or a spot of sunbathing. This journey without a port of call will also be an opportunity to enjoy the conferences or shows proposed on board, depending on the activities offered, or to do some shopping in the boutique or to meet the PONANT photographers in their dedicated space. As for lovers of the open sea, they will be able to visit the ship's upper deck to admire the spectacle of the waves and perhaps be lucky enough to observe marine species. A truly enchanted interlude, combining comfort, rest and entertainment.

Day 4 - Port Vila, Efate

Port Vila is the cradle of an insular harmony where time seems to stand still, a tropical pearl in Vanuatu emerging from the turquoise waters of the Pacific Ocean, a place that inspires contemplation and daydreaming. Beneath an azure sky, the colourful markets reveal the very essence of Vanuatuan culture. The stalls here are overflowing with tropical fruit bursting with sunshine, while the artisans showcase their talents, weaving vegetable-fibre baskets and sculpting traditional masks with enigmatic faces. On the lush heights in the inland region of Vanuatu's capital, the waterfalls whisper secret songs, creating an aquatic symphony that resonates in the heart of travellers in search of magic.

Day 5 - Espiritu Santo Island

At the end of the world, in the north of New Caledonia, lies Vanuatu, a little archipelago that subsists mainly from fishing and farming. It is composed of several islands, Espiritu Santo being the largest and one of the most beautiful. You can meet the people here who are very welcoming and who live in harmony with nature. Plus, you will see unimaginable landscapes formed of volcanic rocks, as well as sandy beaches

and lagoons beckoning you to dive into their of turquoise waters. You will be surprised to find, in the middle of dense vegetation, brackish water with an amazing ecosystem called "blue holes". If paradise exists, it must be here.

Day 6 and 7 - At Sea

During your journey at sea, make the most of the many services and activities on board. Treat yourself to a moment of relaxation in the spa or stay in shape in the fitness centre. Depending on the season, let yourself be tempted by the swimming pool or a spot of sunbathing. This journey without a port of call will also be an opportunity to enjoy the conferences or shows proposed on board, depending on the activities offered, or to do some shopping in the boutique or to meet the PONANT photographers in their dedicated space. As for lovers of the open sea, they will be able to visit the ship's upper deck to admire the spectacle of the waves and perhaps be lucky enough to observe marine species. A truly enchanted interlude, combining comfort, rest and entertainment.

Day 8 - Honiara, Guadalcanal Island

Honiara is the capital city of The Solomon Islands, administered as a provincial town on the north-western coast of Guadalcanal Island. Honiara comes from the local Ghari Language "naho-ni-ara" meaning 'facing the ara', the place where the southeast winds meet the land. Discover this city, its beautiful landscape, and the significant role it played in World War II. Particularly The Battle of Henderson Field, the last of the three major land offensives conducted by the Japanese in 1942.

Day 9 - At Sea

During your journey at sea, make the most of the many services and activities on board. Treat yourself to a moment of relaxation

The Small Cruise Ship Collection

www.small-cruise-ships.com

01432 507 280 (within UK)

info@small-cruise-ships.com | small-cruise-ships.com



The Small Cruise Ship Collection

www.small-cruise-ships.com

small-cruise-ships.com

info@small-cruise-ships.com

in the spa or stay in shape in the fitness centre. Depending on the season, let yourself be tempted by the swimming pool or a spot of sunbathing. This journey without a port of call will also be an opportunity to enjoy the conferences or shows proposed on board, depending on the activities offered, or to do some shopping in the boutique or to meet the PONANT photographers in their dedicated space. As for lovers of the open sea, they will be able to visit the ship's upper deck to admire the spectacle of the waves and perhaps be lucky enough to observe marine species. A truly enchanted interlude, combining comfort, rest and entertainment.

Day 10 - Alotau

Alotau became the provincial capital of Milne Bay in 1969 and today has a population of approximately 16,000. It serves as our port of entry into Papua New Guinea. Missionaries, miners, pearlsh, Japanese and American warships have all contributed to the History of Milne Bay. Perhaps the most significant history surrounds the Battle of Milne Bay. It was here that the invading Japanese army suffered their first land defeat in the Pacific War in 1942. A memorial park at the battle site commemorates the event. The local people are warm and welcoming resulting in one of the most relaxed, secure and easy-going towns in Papua New Guinea. Join your expedition team for a tour taking in the town markets and WWII memorials.

Day 11 - Samarai Island

The Samarai islands are located in the China Strait off the south-eastern tip of New Guinea. In its colonial heyday it was said to be one of the most beautiful places in the Pacific. The island was declared a National Historical Heritage Island by the government of Papua New Guinea in 2006. Just 3km west of Samarai, Kwato Island was once an educational center and

home to a thriving boat building industry. Following the old tree-lined road to the top of the island reveals a stonewalled church that was built in 1937 and remains a testimony to the missionaries of a bygone era. Join your expedition team for a guided walk on Samarai and Kwato Islands. You also will enjoy swimming and snorkelling on nearby Deka Deka island.

Day 12 - 15 - At Sea

During your journey at sea, make the most of the many services and activities on board. Treat yourself to a moment of relaxation in the spa or stay in shape in the fitness centre. Depending on the season, let yourself be tempted by the swimming pool or a spot of sunbathing. This journey without a port of call will also be an opportunity to enjoy the conferences or shows proposed on board, depending on the activities offered, or to do some shopping in the boutique or to meet the PONANT photographers in their dedicated space. As for lovers of the open sea, they will be able to visit the ship's upper deck to admire the spectacle of the waves and perhaps be lucky enough to observe marine species. A truly enchanted interlude, combining comfort, rest and entertainment.

Day 16 - Dili

Located on the northern coast of the island of Timor, along the narrow plains between the central mountains and the Ombai Strait, the seaside resort of Dili is the capital of East Timor, a former Portuguese colony that has been independent since May 2002. The uniqueness of this territory, still preserved from the tourist routes, is unveiled thanks to the beauty of its intact landscapes, with dense tropical forest covering undulating hills, coral reef and immaculate sandy beaches. You will be enchanted by this small and peaceful town with a distinctive Portuguese atmosphere, and will discover the riches of its

The Small Cruise Ship Collection

www.small-cruise-ships.com

01432 507 280 (within UK)

info@small-cruise-ships.com | small-cruise-ships.com



The Small Cruise Ship Collection

www.small-cruise-ships.com

small-cruise-ships.com

info@small-cruise-ships.com

historic and cultural heritage during your visit.

Day 17 - At Sea

During your journey at sea, make the most of the many services and activities on board. Treat yourself to a moment of relaxation in the spa or stay in shape in the fitness centre. Depending on the season, let yourself be tempted by the swimming pool or a spot of sunbathing. This journey without a port of call will also be an opportunity to enjoy the conferences or shows proposed on board, depending on the activities offered, or to do some shopping in the boutique or to meet the PONANT photographers in their dedicated space. As for lovers of the open sea, they will be able to visit the ship's upper deck to admire the spectacle of the waves and perhaps be lucky enough to observe marine species. A truly enchanted interlude, combining comfort, rest and entertainment.

Day 18 - Komodo National

Between the islands of Sumbawa and Florès, Komodo National Park welcomes you to discover its natural wonders. At the very heart of the Indonesian archipelago, the three islands that form it - Komodo, Rinca and Padar - owe their renown to the famous eponymous dragons, enormous lizards over two metres long, which live in its grassy savannah. This jagged and hilly volcanic territory belonging to the Sunda Islands is a UNESCO World Heritage Site because of its incredible terrestrial and marine biodiversity. Admire its palette of colours, intermingling the sparkling whites of the beaches, the deep blues of the coral-filled water and the soft greens of its pastures.

Day 19 - At Sea

During your journey at sea, make the most of the many services and activities on board. Treat yourself to a moment of relaxation

in the spa or stay in shape in the fitness centre. Depending on the season, let yourself be tempted by the swimming pool or a spot of sunbathing. This journey without a port of call will also be an opportunity to enjoy the conferences or shows proposed on board, depending on the activities offered, or to do some shopping in the boutique or to meet the PONANT photographers in their dedicated space. As for lovers of the open sea, they will be able to visit the ship's upper deck to admire the spectacle of the waves and perhaps be lucky enough to observe marine species. A truly enchanted interlude, combining comfort, rest and entertainment.

Day 20-21 - Benoa, Bali

If it's a taste of exotic authenticity you're after, prepare to be spell-bound by the island of Bali, tucked away in the heart of the Indonesian archipelago. The beauty and diversity of its landscapes, the depth and richness of its cultural heritage and the plethora of activities on offer here make Bali a little slice of heaven on Earth. The island's southern coast enthral with its white sand beaches, its picturesque little fishing villages such as Benoa, and its hills patchworked with terraced rice paddies further inland. Nicknamed 'the Island of Gods' for its sumptuous temples, Bali is the beating heart of Indonesian Hinduism.

Please Note:

Itineraries are subject to change.

The Small Cruise Ship Collection

www.small-cruise-ships.com

01432 507 280 (within UK)

info@small-cruise-ships.com | small-cruise-ships.com



The Small Cruise Ship Collection

www.small-cruise-ships.com

small-cruise-ships.com

info@small-cruise-ships.com

YOUR SHIP: PAUL GAUGUIN

YOUR SHIP: Paul Gauguin

VESSEL TYPE:

LENGTH:

PASSENGER CAPACITY:

BUILT/REFURBISHED:

Designed specifically to glide through the shallow seas of the South Pacific, The Gauguin is a small-ship cruiser's dream. She delivers travelers to intimate ports inaccessible to larger cruise ships, all the while providing an onboard experience that is nothing short of luxurious. Guests aboard luxury cruises enjoy spacious suites and staterooms (more than 70% with private balconies), an onboard watersports marina, three dining venues, an extensive spa, and five-star service. Life onboard also reflects the beauty and rich cultural heritage of the islands she calls upon, with a warm, friendly feel, informal setting, and even a beloved troupe of Gauguines and Gauguins--local Tahitians who serve as cruise staff, entertainers, and storytellers. Ship Features All oceanview accommodations, nearly 70% with balconies, measuring from 200 to 500 sq. ft., including balcony Butler service, in-suite bar setup, and iPod® music system in suite/stateroom category B and above A choice of three dining venues Complimentary 24-hour room service, including selections from L'Etoile restaurant during regular dining hours Complimentary beverages, including select wines and spirits, beer, soft drinks, bottled water, and hot beverages Onboard gratuities for room stewards, dining and bar staff Full

entertainment program including Polynesian artists, musical entertainment, a pianist, and a professionally operated casino with slot machines Spa and beauty services, including hand and foot treatments, body treatments, facials, and spa programs Optional PADI SCUBA diving program and certification Watersports marina for complimentary kayaking and paddleboarding, and Zodiacs® for optional dive excursions Fully-equipped fitness center Presentations by local naturalists and a variety of special guests Spacious outdoor decks and pool La Boutique duty-free shop Book library (open 24 hours a day) Wi-Fi hot spots throughout the ship to cover most suites/staterooms and common areas, as well as guest-accessible computers, available 24 hours a day for a nominal fee Laundry services available Certified medical services 166 suites/staterooms on Decks 3-8, including one wheelchair-accessible stateroom and select staterooms that can accommodate



The Small Cruise Ship Collection

www.small-cruise-ships.com

01432 507 280 (within UK)

info@small-cruise-ships.com | small-cruise-ships.com



The Small Cruise Ship Collection

www.small-cruise-ships.com

small-cruise-ships.com

info@small-cruise-ships.com

three guests



The Small Cruise Ship Collection

www.small-cruise-ships.com

01432 507 280 (within UK)

info@small-cruise-ships.com | small-cruise-ships.com

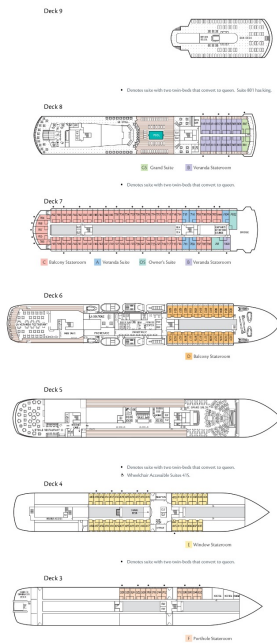
The Small Cruise Ship Collection

www.small-cruise-ships.com

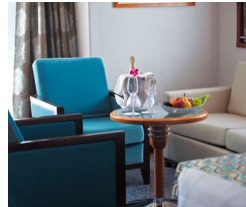
small-cruise-ships.com

info@small-cruise-ships.com

INSIDE YOUR SHIP

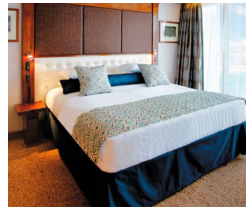


Balcony Stateroom. From Grand Suite



Owner's Suite. From

Porthole Stateroom



Veranda Stateroom

Veranda Suite



The Small Cruise
Ship Collection

www.small-cruise-ships.com

small-cruise-ships.com

info@small-cruise-ships.com

PRICING

19-Jan-2025 to 08-Feb-2025

Porthole Stateroom	£16744 GBP pp
Balcony Stateroom. From	£22672 GBP pp
Owner's Suite. From	£47060 GBP pp
Window Stateroom	£18538 GBP pp
Veranda Stateroom	£28756 GBP pp
Veranda Suite	£34866 GBP pp
Grand Suite	£44538 GBP pp

ADDITIONAL CHARGES: Port Taxes and Fees 560 AUD pp