

The Small Cruise Ship Collection

www.small-cruise-ships.com

small-cruise-ships.com

info@small-cruise-ships.com

FLAVOURS OF TASMANIA – MEET THE MAKERS - A CULINARY ADVENTURE

Embark on an enticing culinary adventure with our new, "Flavours of Tasmania - Meet the Makers" voyage showcasing some incredible local providores and growers and sharing their story. This journey is tailored for adventurous food and wine enthusiasts eager to explore Tasmania's culinary shores, immersing yourself in breathtaking scenery and exclusive events featuring local producers. From fresh seafood to organic produce, experience Tasmania's culinary heritage paired with world-class wines and spirits. Meet notable figures like cheese-making pioneer Jane Bennett, wine connoisseur Gerald Ellis, and whiskey expert Peter Bignal. Engage in a distillery tour with Bill McHenry, explore the Tamar Valley Truffle Farm, and indulge in wine tastings with Marion Semmens. Delight in local delicacies with panoramic views, enjoy an exclusive culinary experience at The Kiln, and enjoy a signature dinner event with Matt Dunbabin at Bangor Winery. This voyage guarantees an intimate exploration of Tasmania's culinary heritage, providing insight into the unique history and stories of local produce experts who shape Tasmania's culinary landscape.



ITINERARY

DAY 1: DEPART MELBOURNE

Arrive at Melbourne Harbour Station Pier (berth to be advised) at 4:00pm, where there is time to settle into your stateroom before our 5:00pm departure.

Take the time to become acquainted with all the facilities onboard Coral Adventurer. Gather in the Bridge Deck lounge for a safety briefing and presentations by lecturers and expedition staff. As dusk falls, mingle with your fellow travellers, the Captain and crew for the Captain's Welcome Drinks.

CROSSING BASS STRAIT

The Small Cruise Ship Collection
www.small-cruise-ships.com

01432 507 280 (within UK)

info@small-cruise-ships.com | small-cruise-ships.com



The Small Cruise Ship Collection

www.small-cruise-ships.com

small-cruise-ships.com

info@small-cruise-ships.com

Immerse yourself in a series of onboard experiences as we cross the Bass Strait named after George Bass, who, alongside Matthew Flinders, sailed across it while circumnavigating Van Diemen's Land (now named Tasmania) in the Norfolk in 1798-99. Join us later this evening for the Captain's Welcome Drinks, featuring an exquisite selection of Tasmanian Beers and Wines, as we toast to the beginning of our adventure together.

LAUNCESTON

Visit the picturesque Tamar Valley Truffle Farm, home to one of the world's top 10 winery routes, and meet Marcus Jessup and gain insight into truffle farming, accompanied by tastings. Explore the world-class Marions Winery with Marion Semmens, enjoying a guided vineyard and winery tour followed by tastings. Conclude the day with a picnic lunch overlooking the Tamar Valley, selecting from a variety of locally sourced options.

FLINDERS ISLAND

Explore Unavale Winery, where you'll indulge in a wine tasting experience. Then, delve into local history at the Furneaux Museum, gaining insights into the rich heritage of the region.

Then, enjoy a scenic stroll along the Trousers Point track, immersing yourself in the natural beauty of Flinders Island. Conclude your day with a bus tour, offering a panoramic view of Flinders Island's diverse landscapes and abundant wildlife.

FREYCINET

At Freycinet Peninsula, see the pink granite formations of the Hazard Mountains, and the sweeping bays fringed by Eucalypts. Embark on a guided hike to Wineglass Bay beach, where you can enjoy a refreshing swim and indulge in birdwatching amidst the local flora and fauna. Conclude your day with a local produce and wine tasting on the balcony of Freycinet Lodge, where you can savor delicious flavors while soaking in the breathtaking coastal views of Coles Bay.

TASMAN PENINSULA

Indulge in a tasting and tours of McHenry's Distillery, where Bill McHenry himself will guide you through the distillery process and share the secrets of gin making. Continue your journey with tastings and tours at Premaydena Winery and Black Angus Beef Farm, where you'll savor the flavors of premium wines and succulent beef amidst picturesque surroundings. Discover the unique landscapes and flora of Tasman Peninsula as you explore Port Arthur Lavender, Tessellated Pavement and the Devil's Arch. Conclude your day with a memorable Signature

The Small Cruise Ship Collection
www.small-cruise-ships.com

01432 507 280 (within UK)

info@small-cruise-ships.com | small-cruise-ships.com



The Small Cruise Ship Collection

www.small-cruise-ships.com

small-cruise-ships.com

info@small-cruise-ships.com

Dinner Event at Bangor Winery, where you'll have the pleasure of meeting Matt Dunbabin and learning about the farm's rich history. Enjoy wine tastings and vineyard tours before indulging in dinner featuring the finest Tasmanian produce.

SOUTHERN CRUISE

Cruise down the D'Entrecasteaux Channel towards South Cape accompanied by specialist Tasmanian producers showcasing their specialties on board including a whiskey maker, wine maker, and cheese expert, providing insights into their craft and tastings of their cuisine. In Recherche Bay, immerse yourself in nature with a scenic stroll along the Fisher Point Walk, taking in the local flora and fauna. Enjoy an optional walk to the bronze whale statue at Cockle Creek.

HUON VALLEY

Journey along the Huon River, where you'll explore the charming township of Franklin and its renowned Wooden Boat Centre, offering insight into Tasmania's maritime heritage. Indulge in our final signature event of the voyage, an exclusive culinary experience at The Kiln, featuring displays by local producers, a lunch showcasing Tasmanian delights, and live music performed by a talented local band, celebrating the new friends and memories we've created on the final expedition day of the voyage.

DAY 9: ARRIVE HOBART

Our Tasmania adventure concludes in Hobart this morning as we bid farewell to new-found friends, the Master and crew, disembarking at 8:00am. Enjoy a complimentary transfer to CBD hotels or the airport.

Please note:

This itinerary is an indication of the destinations we visit and activities on offer. Throughout the expedition we may make changes to the itinerary as necessary to maximise your expeditionary experience. Allowances may be made for seasonal variations, weather, tidal conditions, and any other event that may affect the operation of the vessel. Coral Expeditions suggests that you do not arrive on the day of embarkation or depart on the day of disembarkation due to any changes that may occur in scheduling.

The Small Cruise Ship Collection

www.small-cruise-ships.com

01432 507 280 (within UK)

info@small-cruise-ships.com | small-cruise-ships.com



The Small Cruise Ship Collection

www.small-cruise-ships.com

small-cruise-ships.com

info@small-cruise-ships.com

YOUR SHIP: CORAL ADVENTURER

YOUR SHIP: Coral Adventurer

VESSEL TYPE:

LENGTH:

PASSENGER CAPACITY:

BUILT/REFURBISHED:

Launched in 2018 with her maiden voyage in 2019, Coral Adventurer has been designed and built to take you closer to unspoilt vistas in comfort, style and safety. A culmination of two years of design and three decades of passion for expedition cruising. BIGGER IS NOT BETTER At a time when cruise ships get larger and glitzier, we remain stubbornly compact and intimate. Our ships are designed to take you to unspoilt destinations not accessible to large ships. We want you to have the luxury of space, dine with whom you please, or find your quiet corner on deck. So Coral Adventurer has just 60 spacious cabins. This preserves the intimate atmosphere we are known for without sacrificing the stability and comfort of a true ocean going vessel. BUILT FOR DISCOVERY The Coral Adventurer features the trademark dual 'Xplorer' tenders cradled on a hydraulic platform slung off the back of the ship, enabling our guests to go ashore in comfort and ease. The shallow draft of the ship enables us to go closer to shore than larger ships. Together with a renowned expedition team, this new ship will offer the most advanced expedition capabilities of any small ship afloat. BUILT FOR COMFORT With active stabilisers dampening sea motion, mostly balcony cabins, and interiors designed with the colours and

textures of tropical Queensland, the Coral Adventurer is a comfortable ship. She features promenade decks, generous communal areas that accommodate all guests, a passenger elevator, and an open kitchen where you can observe our chefs whip up small batch cuisine from locally sourced ingredients. BUILT FOR PERSONAL SERVICE The Coral Adventurer will continue a proud tradition of Australian flagged vessels with friendly and professional Australian crew. The onboard atmosphere remains refreshingly informal and intimate. Take your seat at our bridge lounge, chat with the captain at your leisure or accompany our chefs on a market tour. Food and wine features Single seating dining area with communal 'wine table' finished with Australian stone; serving buffet breakfast and lunch, and multi-course table d'hote dinners Showcase galley visible to guests for fresh small-batch cuisine featuring Australian produce Multiple indoor and outdoor bars, including the Explorer bar on the sundeck for sunset drinks with 180 degree views Curated wine cellar featuring modestly priced boutique wines for daily drinking and exceptional vintage Australian reds. Guest comfort All outside guest cabins with en-suite bathrooms; majority have private balcony Active stabilisers to dampen sea motion Gym equipped with elliptical trainers and treadmills Passenger elevator Wi-Fi available in all

The Small Cruise Ship Collection
www.small-cruise-ships.com

01432 507 280 (within UK)

info@small-cruise-ships.com | small-cruise-ships.com



guest areas

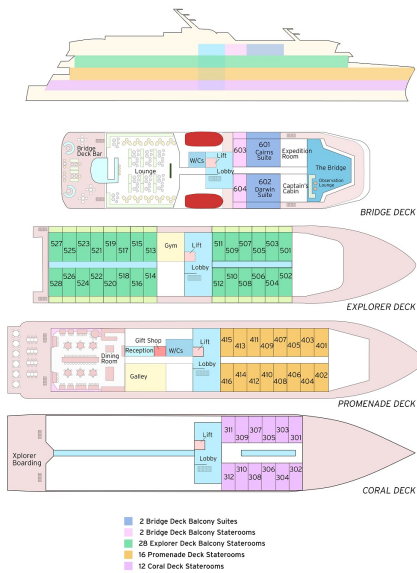
The Small Cruise Ship Collection

www.small-cruise-ships.com

small-cruise-ships.com

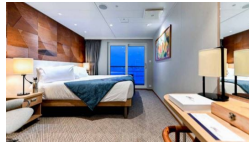
info@small-cruise-ships.com

INSIDE YOUR SHIP



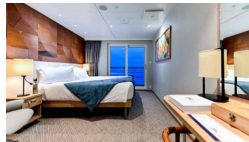
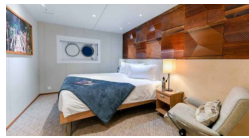
BRIDGE DECK BALCONY STATEROOM

BRIDGE DECK BALCONY SUITE

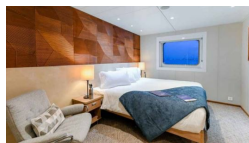


CORAL DECK STATEROOM

EXPLORER DECK BALCONY STATEROOM



PROMENADE DECK STATEROOM



The Small Cruise Ship Collection

www.small-cruise-ships.com

01432 507 280 (within UK)

info@small-cruise-ships.com | small-cruise-ships.com



The Small Cruise Ship Collection

www.small-cruise-ships.com

small-cruise-ships.com

info@small-cruise-ships.com

PRICING

09-Dec-2024 to 17-Dec-2024

BRIDGE DECK BALCONY SUITE £8415 GBP pp

PROMENADE DECK STATEROOM £4488 GBP pp

EXPLORER DECK BALCONY STATEROOM £5967 GBP pp

BRIDGE DECK BALCONY STATEROOM £6553 GBP pp

CORAL DECK STATEROOM £3723 GBP pp



The Small Cruise Ship Collection
www.small-cruise-ships.com

01432 507 280 (within UK)

info@small-cruise-ships.com | small-cruise-ships.com