



## The Small Cruise Ship Collection

[www.small-cruise-ships.com](http://www.small-cruise-ships.com)

[small-cruise-ships.com](http://small-cruise-ships.com)

[info@small-cruise-ships.com](mailto:info@small-cruise-ships.com)

## FROM IBERIAN SHORES TO GREEK COASTLINES LUXURY CRUISE

Sail along Mediterranean shores and explore centuries of history during this exceptional journey between the western Spanish coast, the captivating Balearic Islands, Sardinia and Sicily, passing via the Italian boot and the Greek coastline. During this 11-day cruise aboard Le Dumont-d'Urville, you will be surprised by the Mediterranean and its civilisations, a crossroads of exchange and cradle of a unique way of life weaved together from fascinating cultures. Throughout your journey, you will benefit from an excursion included per person per port of call, to choose from a selection offered by PONANT. During this cruise, visit the National Museum of Magna Graecia in Reggio Calabria; explore the archaeological site of Delphi from Itea; or discover the ruins of Mycenae and Epidaurus from Nafplio. The diversity of experiences on offer promises you intense and varied moments (to discover the full range of excursions, go to the itinerary tab). From the Costa del Sol's cultural capital, Malaga, you will head towards Cartagena, a city with rich ancient heritage from the Carthaginians and the Romans. Further east, you will reach the Balearic Islands, anchored off the coast of the Spanish coastline. You will be captivated by Palma de Mallorca, a jewel of this archipelago renowned for its contrasting islands set on the clear waters of the Mediterranean. Your Mediterranean odyssey will continue with the discovery of Cagliari, capital of Sardinia and one of the largest natural harbours in the Mediterranean; its historic centre is full of charm, with shaded stairs, small squares inundated with light, and remains conjuring up its medieval grandeur. Soon, the contours of bewitching and captivating Sicily will appear. Fall under the spell of Palermo, its capital, where you will be able to

visit emblematic sites, such as the 12th-century cathedral and the Teatro Massimo, one of the largest in Europe. In the southernmost part of "the Boot", you sail off the coast of Calabria with a stopover in Reggio Calabria. You can stroll along the lungomare against the imposing backdrop of Mount Etna. Le Dumont-d'Urville then crosses the Ionian Sea to Katakolon, its first stopover in Greece. From the port, you can get to Olympia, a UNESCO World Heritage site whose ruins bear witness to past grandeur. You arrive in the small port of Itea from where it is possible to visit the mythical site of Delphi or even the Hosios Loukas monastery, both of which are UNESCO World Heritage Sites. After your mythical and remarkable crossing of the Corinth Canal, you will arrive in Nafplio. It is an opportunity to discover the mythical sites of Epidaurus and Mycenae, respectively an ancient theatre and a pre-Hellenic city, both of which are UNESCO World Heritage Sites. Athens, the mythical city dominated by the Acropolis and its monuments, which form the most extraordinary architectural and artistic ensemble bequeathed to the world by Ancient Greece, marks the end of this

The Small Cruise Ship Collection

[www.small-cruise-ships.com](http://www.small-cruise-ships.com)

01432 507 280 (within UK)

[info@small-cruise-ships.com](mailto:info@small-cruise-ships.com) | [small-cruise-ships.com](http://small-cruise-ships.com)

# The Small Cruise Ship Collection

www.small-cruise-ships.com

small-cruise-ships.com

info@small-cruise-ships.com



## Day 2 CARTAGENA

Surrounded by hills, the natural site of the Bay of Cartagena presided over the fate of this former fortress which has been home to the greatest European civilisations. Today, these Phoenician, Roman, Carthaginian, Moorish and Christian influences form a rich architectural heritage. Its Roman theatre is one of the most significant and best conserved in Spain. You will also be able to cross the landscapes of vines and citrus groves stretching endlessly towards Murcia, to visit this dynamic regional capital.

## Day 3 PALMA DE MALLORCA, BALEARIC ISLANDS

Palma de Mallorca will reveal its many treasures: idyllic coves, majestic limestone cliffs that plunge into the clear sapphire- and turquoise-coloured waters of the Mediterranean, and vast plains planted with almond trees, olive trees and vineyards. When your ship calls at the capital of the Balearic Islands, take a walk to discover its emblematic monuments, such as its famous cathedral, and amble through its old streets. Here, like a painting, the island's historical heritage forms a backdrop to the lively and warm cosmopolitan atmosphere of the Mediterranean.

## Day 4 AT SEA

During your journey at sea, make the most of the many services and activities on board. Treat yourself to a moment of relaxation in the spa or stay in shape in the fitness centre. Depending on the season, let yourself be tempted by the swimming pool or a

exceptional odyssey.

## ITINERARY

### Day 1 MÁLAGA

A historical and festive town, Malaga is located in Andalusia, on the Costa del Sol. Between the marina and the beaches, the seaside promenade of La Farola offers an ideal setting for strolling and relaxing. Set slightly further back, the Malagueta bullring is one of the emblematic sites of the city. From the hill overlooking the old town, one can see Gibralfaro castle and the Alcazaba, two fortified ensembles rising out from the cypresses and maritime pines. To visit Pablo Picasso's birthplace, you will go first to the courtly plaza de la Merced. A few streets back from here, you can explore the museum dedicated to the artist, in the Buenavista palace.

The Small Cruise Ship Collection  
www.small-cruise-ships.com

01432 507 280 (within UK)

info@small-cruise-ships.com | small-cruise-ships.com



## The Small Cruise Ship Collection

[www.small-cruise-ships.com](http://www.small-cruise-ships.com)

[small-cruise-ships.com](http://small-cruise-ships.com)

[info@small-cruise-ships.com](mailto:info@small-cruise-ships.com)

spot of sunbathing. This journey without a port of call will also be an opportunity to enjoy the conferences or shows proposed on board, depending on the activities offered, or to do some shopping in the boutique or to meet the PONANT photographers in their dedicated space. As for lovers of the open sea, they will be able to visit the ship's upper deck to admire the spectacle of the waves and perhaps be lucky enough to observe marine species. A truly enchanted interlude, combining comfort, rest and entertainment.

### Day 5 CAGLIARI, SARDINIA

The capital of Sardinia, Cagliari, like Rome, is built on seven hills. Its Sardinian name means "castle", in reference to the citadel, its historic centre, which dominates the city. The old ramparts are now pleasant panoramic terraces bordering picturesque streets. The city hosted the Nuragic, Phoenician, Roman and Byzantine civilisations before the rein of the Spanish Hapsburgs and the House of Savoy. The monuments of Cagliari bear the traces of these successive dominations, such as the Bastion of Saint-Remy or the Sainte-Marie Cathedral. On the sea front, Art Nouveau-style public monuments give way to the Poetto beach, a magnificent stretch of sand that is 8 kilometres long.

### Day 6 PALERMO, SICILY

Palermo is the guardian of the Sicilian soul. Many have been attracted to this city, the largest capital of the Italian islands. Phoenicians, Carthaginians, Romans, Byzantines, Arabs, Normans... Palermo is a rich culmination of so many cultural

influences as seen in the Moorish designs on the cathedral, and the Byzantine mosaics of the Palatine chapel, which is itself housed within the precincts of the Norman palace. You will fall under the spell of the palaces, baroque splendours that grace the town with their obsolete beauty. It is thrilling to stumble upon one of those fabulous markets, high in colour, and headily picturesque.

### Day 7 REGGIO DI CALABRIA

At the southern tip of the Italian boot, Reggio di Calabria guards the eastern shore of the Strait of Messina. From the lungomare, the sea front promenade, there are magnificent views over Sicily, a little over 3 km away, and Etna. Rebuilt after the 1908 earthquake, Reggio is set out in a grid pattern and has Art Nouveau and Belle Époque architecture that add to its charm. And the fragrance of bergamot, the citrus fruit that dominates the region's confectionery and perfumery. A visit to the National Archaeological Museum is a must. It is one of the most important in Italy and among its collections are the famous Riace Bronzes, the stunning Greek statues dating from the 5th century BC that were found off the coast in 1972.

### Day 8 KATAKOLON

This picturesque village stretches along the Ionian sea in the west of the Peloponnese. Its main harbour offers a vast panorama of the coastline's wooded hillsides. Dazzling white, the church of Saint-Nicolas houses a selection of sumptuous icons. You can also pay a visit the archaeological site of Olympus on the slopes of Mount Kronos.

The Small Cruise Ship Collection  
[www.small-cruise-ships.com](http://www.small-cruise-ships.com)

01432 507 280 (within UK)

[info@small-cruise-ships.com](mailto:info@small-cruise-ships.com) | [small-cruise-ships.com](http://small-cruise-ships.com)



## The Small Cruise Ship Collection

[www.small-cruise-ships.com](http://www.small-cruise-ships.com)

[small-cruise-ships.com](http://small-cruise-ships.com)

[info@small-cruise-ships.com](mailto:info@small-cruise-ships.com)

### Day 9 ITEA & CROSSING THE CORINTH CANAL

Tucked away in the Gulf of Corinth, this little port is situated in continental Greece, north-west of Athens. Take an easy stroll along the old cobblestone quays, while gazing at the summits encircling the Bay of Itea. We wouldn't be surprised if you are tempted by a visit to the Delphi Sanctuary. The sanctuary is located on a plateau on the slope of Mount Parnassus, just ten kilometres from Itea. A listed UNESCO World Heritage site, this is a once-in-a-lifetime experience whose ancient ruins are surrounded by steep mountains.

The Corinth Canal cuts through the Isthmus of Corinth, turning the Peloponnese into an island as it separates the region from the Greek mainland. Inaugurated in 1893, the canal is a little over six kilometres long and enables merchant vessels and passenger to avoid a long 400-km detour around the peninsula. The two sides of the canal reach a height of approximately fifty metres. From the exterior decks, don't miss this unique opportunity to watch the ship as it navigates along the narrow strip of water encased between tall, ochre cliffs. What an experience!

### Day 10 NAFPLION

The engaging town of Nafplion is staggered up green hillsides of the Argolic Gulf, to the east of the Peloponnese. Do not be surprised by its extremely varied cultural heritage. Some of the must-see visits are the ancient agora on the plateau of Akronafplia, Italianate arcades in Syntagma square as well as the baroque fortress of Palamidi on a hillside of the same name.

At the top of the hill, views of the gulf and the surrounding mountains are simply awesome. If you want to chill out by the water's edge, walk along the Arvanitia promenade to a beautiful creek in the shade of cedars and cypresses.

### Day 11 ATHENS

The Greek capital city is located on the edge of the Saronic gulf, in the east of the country. It bears a plural name in reference to the first villages that surround the Acropolis. You will be enchanted by the rocky plateau presided by its monuments listed as UNESCO World Heritage. In the city below, you can visit some of the liveliest districts in Athens: Plaka, with its maze of colourful streets, and where, in the evenings the drifting aroma of moussaka and garlic prawns will tickle your taste buds. The National Archaeological museum and the Cycladic Art Museum are also some of the city's key attractions and allow visitors to discover Athens' cultural past.

Please note:

Itineraries are subject to change.

The Small Cruise Ship Collection

[www.small-cruise-ships.com](http://www.small-cruise-ships.com)

01432 507 280 (within UK)

[info@small-cruise-ships.com](mailto:info@small-cruise-ships.com) | [small-cruise-ships.com](http://small-cruise-ships.com)



## The Small Cruise Ship Collection

[www.small-cruise-ships.com](http://www.small-cruise-ships.com)

[small-cruise-ships.com](http://small-cruise-ships.com)

[info@small-cruise-ships.com](mailto:info@small-cruise-ships.com)

## YOUR SHIP: LE DUMONT D'URVILLE

**YOUR SHIP:** Le Dumont d'Urville

**VESSEL TYPE:**

**LENGTH:**

**PASSENGER CAPACITY:**

**BUILT/REFURBISHED:**

Featuring innovative and environmentally-friendly equipment, elegantly designed staterooms, spacious suites with large windows, and lounge areas that open onto the outside, this new limited-capacity yacht boasting just 92 staterooms and suites will offer you a truly unique cruising experience. As the first ship in a new series that remains true to the Ponant spirit, Le Dumont d'Urville will embody the unique atmosphere that is the cruise line's hallmark: a subtle blend of refinement, intimacy and comfort. Aboard this ship that flies the French flag, you will experience the incomparable pleasure of an intimate cruise, with the possibility of exploring an ever-increasing range of destinations in an ethnic-chic ambiance with luxury service. Experience a luxurious setting where the accent is on authenticity and passion for travel. **RESTAURANTS** As it is an essential part of French culture, gastronomy will naturally have pride of place aboard this new ship. Through its two restaurants, Le Dumont d'Urville will invite you on a journey to elegance and epicureanism. In a relaxed atmosphere, a first dining area located on Deck 3 and able to seat 70 will serve grilled meats daily, along with a variety of salads and desserts. To the back of Deck 4, you will find a 260 m<sup>2</sup> panoramic restaurant which can

accommodate all of our passengers in a single sitting. Designed differently to that on our other ships, this dining area, which opens onto the outside, will have a buffet of salads, desserts and cheeses at your disposal. Our discreet and attentive crew will provide table service for hot meals. **PUBLIC AREAS** Like Le Boreal and its sisterships, Le Dumont d'Urville has many common areas that are designed and equipped to meet all of your needs while preserving the intimacy of each passenger. A 140 m<sup>2</sup> reception area includes: A reception/concierge desk, An excursions desk, The ship's administrative services, The sales office, manned by our Guest Relations Officer, Our 50 m<sup>2</sup> boutique which sells clothing, jewellery, beauty products, postcards and various accessories, Toilets accessible to passengers with reduced mobility. A new hydraulic platform with adjustable height provides: Easier boarding than on any other cruise ship, Easier Zodiac embarkation and disembarkation for expeditions, Easier access to the sea for swimming and practising various water sports such as kayaking or paddle-boarding. A pool deck offering: A pool with a panoramic view, equipped with a counter-current swimming system, A pleasant solarium, An outdoor bar and lounge with armchairs and sofas. A 200 m<sup>2</sup> main lounge which can accommodate all of our passengers to share convivial moments and to host activities organised during the day or evening. Lastly, a theatre that seats 188, equipped with: The latest sound and lighting technology, A LED wall as the stage backdrop, for the projection of high-resolution images and videos. Please click the following links to read more about Ponant and the other Ponant

The Small Cruise Ship Collection

[www.small-cruise-ships.com](http://www.small-cruise-ships.com)

01432 507 280 (within UK)

[info@small-cruise-ships.com](mailto:info@small-cruise-ships.com) | [small-cruise-ships.com](http://small-cruise-ships.com)



The Small Cruise Ship Collection

www.small-cruise-ships.com

small-cruise-ships.com

info@small-cruise-ships.com



cruise ships.

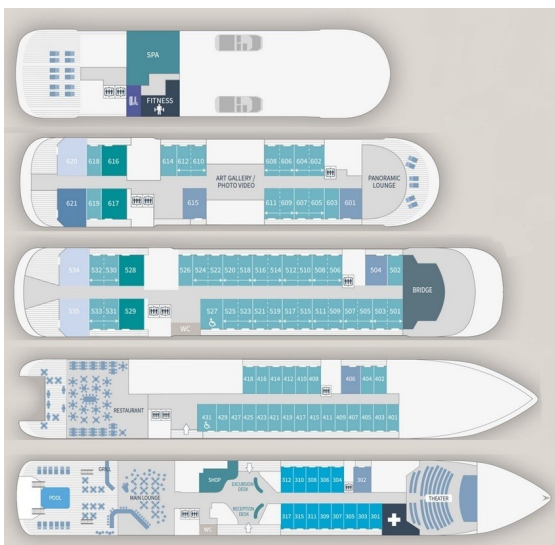
# The Small Cruise Ship Collection

www.small-cruise-ships.com

small-cruise-ships.com

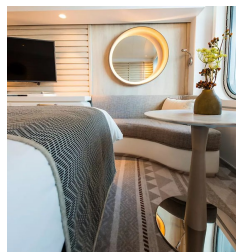
info@small-cruise-ships.com

## INSIDE YOUR SHIP

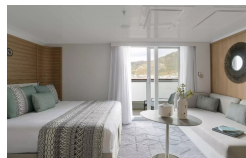


- Owner's Suite Deck 6
- Privilege Suites Deck 5-6
- Grand Deluxe Suites Deck 5-6
- Prestige Suites Deck 5-6
- Deluxe Suites Deck 5-6
- Prestige Cabins Deck 4-5-6
- Deluxe Cabins Deck 3

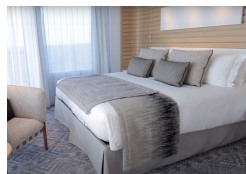
### Deluxe Stateroom



### Deluxe Suite



### Grand Deluxe Suite



### Owner's Suite



Prestige Stateroom Deck 4

Prestige Stateroom Deck 6

Prestige Suite Deck 6

Prestige Stateroom Deck 5

Prestige Suite Deck 5

Privilege Suite

The Small Cruise Ship Collection

www.small-cruise-ships.com

01432 507 280 (within UK)

info@small-cruise-ships.com | small-cruise-ships.com



# The Small Cruise Ship Collection

[www.small-cruise-ships.com](http://www.small-cruise-ships.com)

[small-cruise-ships.com](http://small-cruise-ships.com)

[info@small-cruise-ships.com](mailto:info@small-cruise-ships.com)

## PRICING

29-Mar-2025 to 08-Apr-2025

Privilege Suite	£12649 GBP pp
Prestige Stateroom Deck 5	£6165 GBP pp
Owner's Suite	£15305 GBP pp
Deluxe Suite	£10589 GBP pp
Prestige Stateroom Deck 4	£5875 GBP pp
Deluxe Stateroom	£5575 GBP pp
Grand Deluxe Suite	£15305 GBP pp
Prestige Suite Deck 5	£11765 GBP pp
Prestige Suite Deck 6	£12065 GBP pp
Prestige Stateroom Deck 6	£6515 GBP pp

**ADDITIONAL CHARGES:** Port Taxes 740 AUD pp