

The Small Cruise Ship Collection

www.small-cruise-ships.com

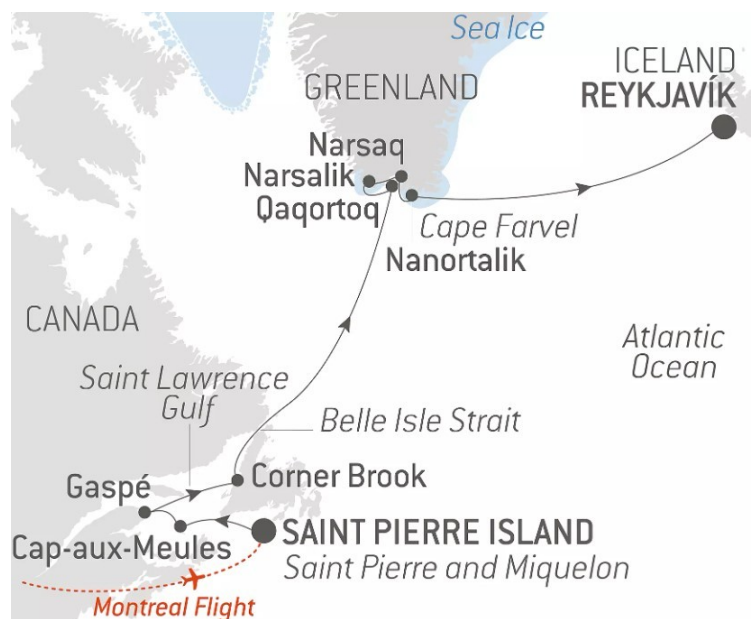
small-cruise-ships.com

info@small-cruise-ships.com

FROM THE ST LAWRENCE TO GREENLAND, THE LAST MOMENTS OF WINTER

With featured guest Cindy Miller Hopkins, American Photo Ambassador. Once again, Le Commandant Charcot will convey you towards unexpected horizons, towards still little-known perspectives. You will be enveloped in the comfort of a ship unlike any other while the polar world reveals itself throughout your exploration. From the shores of the Gulf of Saint Lawrence, your journey will take you to the south-western coast of Greenland for timeless moments. The snow-covered northern forests make way for the icy scenery of Greenland where the local communities await to share their unique culture with you. At the end of winter, take the time to appreciate the emotions you will feel, to contemplate the dreamlike landscapes of the Far North and to let yourself be surprised by the unknown. The winter will soon draw to a close. Although the ice break-up has begun in the waters of the Gulf of Saint Lawrence, the tops of the conifers making up this northern forest are still covered in a white veil. Nature seems frozen, yet its whisper may be heard by those who know how to listen. You will discover the Magdalen Islands during a port of call in Cap-aux-Meules and through various activities such as a walk on its frozen beaches. From the sea, the cliffs of the Gaspé Peninsula hide the mysteries of the hinterland, which is full of promise. Among the winter activities on offer are: discovering the Forillon National Park, snow-shoeing in L'Anse-au-Griffon Valley and meeting the Micmac, one of the First Nations of the Canadian provinces. On the coast of the legendary island of Newfoundland, you will explore Corner Brook and its ski resorts, with their magnificent panoramas. It will now be time to leave the North American continent, sail down the Strait of Belle Isle and reach the

ice-covered south-western coast of Greenland, a first for a cruise line during this season. Time stands still before this immensity, where the ice has taken over the terrain. Drifting icebergs, broken-up ice floe, majestic fjords, jagged mountains: the white unveils its nuances across changing decors. In the heart of this nature, which will leave you with an indescribable feeling of serenity, the encounters with the local Inuit communities will be magical. Here, where a warm welcome is part of the way of life, the inhabitants of the Far North will enthusiastically share their traditions with you. Through activities designed in collaboration with our Greenlandic hosts, you will rediscover the region. From magical moments to unforgettable memories, this journey to the boundaries of the world will be sure to



The Small Cruise Ship Collection

www.small-cruise-ships.com

01432 507 280 (within UK)

info@small-cruise-ships.com | small-cruise-ships.com



The Small Cruise Ship Collection

www.small-cruise-ships.com

small-cruise-ships.com

info@small-cruise-ships.com

surprise you.

ITINERARY

Day 1 SAINT PIERRE ISLAND, SAINT PIERRE AND MIQUELON

Off the Canadian coast, discover Saint Pierre Island, one of the two main islands of the Saint Pierre and Miquelon archipelago, the only French territory in North America. Endowed with a natural harbour, the island, whose name is a reference to the patron saint of fishermen, developed around the fishing industry and still has many traces of its past today. Whale hunting, cod fishing, alcohol smuggling during the Prohibition: all of these memories are still very much alive in the capital, Saint-Pierre. The island is also renowned for the observation of exceptional fauna including, among others, whales, fin whales, dolphins, seals, puffins and petrels.

Day 2 AT SEA ABOARD LE COMMANDANT CHARCOT

Spend exceptional moments sailing aboard Le Commandant Charcot, the world's first luxury polar exploration vessel and the first PC2-class polar cruise ship capable of sailing into the very heart of the ice, on seas and oceans which the frozen conditions render inaccessible to ordinary ships. Le Commandant Charcot is fitted with oceanographic and scientific equipment selected by a committee of experts. Take advantage of the on-board

lectures and opportunities for discussion with these specialists to learn more about the poles. Participate in furthering scientific research with PONANT and let us discover together what these fascinating destinations have yet to reveal to us.

Day 3 CAP-AUX-MEULES, MAGDALEN ISLANDS

Scattered through the Gulf of Saint Lawrence, the Magdalen Islands offer a variety of extraordinary landscapes, between captivating drifting ice floe, tall red sandstone cliffs, sandy beaches covered with an immaculate coat and snow-covered valleys. Here, winter really is a special season, a time of contrasts and mysteries. The icy winds intertwine with the softness of the salty air, and the colourful houses, dressed in their finest attire, stand bravely in this enchanting scenery. In these distant lands, you will be plunged into Acadian culture, you will discover ancestral traditions here and will have the chance to explore the unique landscapes on hikes or snowshoe walks along the icy shores.

Day 4 GASPÉ

In the glacial darkness of the Canadian winter, Gaspé stands proud like a preserved and authentic jewel at the edge of the dark waters of the Gulf of Saint Lawrence. Nature seems to be holding its breath. The captivating Mount Jacques-Cartier, the highest point of the Chic-Choc Mountains range and the South,

The Small Cruise Ship Collection

www.small-cruise-ships.com

01432 507 280 (within UK)

info@small-cruise-ships.com | small-cruise-ships.com



small-cruise-ships.com

info@small-cruise-ships.com

is dressed with an immaculate coat of snow, while the frozen rivers slowly wind their way, fixing time in their icy embrace. During a snowshoe walk, fall in love with the captivating landscapes of the L'Anse-au-Griffon Valley, right in the heart of the Forillon National Park. Then, in Perce, opposite the famous eponymous Rock, dive into the natural beauty of the "magic forest", where thousands of conifers decked out in an immaculate white cloak are like silent guardians watching over this isolated piece of land. You may also fall in love with this charming town, where the exciting history and the conviviality of the locals come together in a delightful blend.

Day 5 SAILING SAINT LAWRENCE GULF

In the Gulf of Saint Lawrence, the waters are still partially frozen but the ice break-up has begun. The broken-up ice makes for a fascinating spectacle, forming shapes that seem to be dancing across the waves. You will sail in the Gulf of Saint Lawrence, following in the footsteps of Jacques Cartier, who reached it during his first voyage in 1534. From the bridge, if luck is on your side, you will contemplate the seals and belugas that populate the region during this season. In the distance, the boreal forests, their peaks whitened by the last snow, offer you the idealised image of this piece of Canada. A moment of indescribable magic.

Day 6 CORNER BROOK

At the mouth of the Humber River, on the Bay of Islands, you will discover the port of Corner Brook, surrounded by mountains. A thick layer of snow covers the hillsides that will welcome you, in their ski resort, for winter activities in a splendid setting. On the legendary island of Newfoundland, visit the territory by going snowshoeing or on a ski or snowboard trip at the renowned Marble Mountain Ski Resort. Or you could just decide to wander the streets of this authentic Newfoundlander town and discover its history.

Day 7 CROSSING BELLE ISLE STRAIT

Sailing the Strait of Belle Isle will guarantee a moment of intense emotion. Your ship will enter this waterway, which separates Newfoundland from the North American continent, while the ice break-up is only just beginning its cycle. From the bridge, if the ice is still present, you will perhaps observe the Greenland seals which populate these waters dotted with fragments of ice floe, aiming to breed there. Time stands still, a magical spell is cast.

Day 8 AT SEA ABOARD LE COMMANDANT CHARCOT

Spend exceptional moments sailing aboard Le Commandant Charcot, the world's first luxury polar exploration vessel and the



The Small Cruise Ship Collection

www.small-cruise-ships.com

small-cruise-ships.com

info@small-cruise-ships.com

first PC2-class polar cruise ship capable of sailing into the very heart of the ice, on seas and oceans which the frozen conditions render inaccessible to ordinary ships. Le Commandant Charcot is fitted with oceanographic and scientific equipment selected by a committee of experts. Take advantage of the on-board lectures and opportunities for discussion with these specialists to learn more about the poles. Participate in furthering scientific research with PONANT and let us discover together what these fascinating destinations have yet to reveal to us.

Day 9 QAQORTOQ

Follow the Davis Strait currents and Qaqortoq, the largest town in southern Greenland, reveals itself in a rocky setting covered in immaculate white. The winter is slowly slipping away but the ice is still very present, providing a marvellous decor for the rare travellers exploring this place at this time of year. This charming fishing port, nestling within the fjord, can be seen from afar, with its delightful, brightly-coloured houses built upon the hillsides. During a hike, you will wander around the streets of the town centre, where you will recognise the Danish influences; it is home to numerous historical monuments, such as the country's famous and oldest fountain, topped with whales. One of the uncontested highlights of this port of call will involve meeting the local community and discovering their spring traditions during a day of sharing.

Day 10 NARSALIK

Somewhere in the Greenlandic south-west, in the heart of the maze made up by the fjords and bays, the small village of Narsalik brightens up the Arctic white with its colourful houses. In this territory at the end of the world, you will set off to encounter the Inuit community for an unforgettable moment of sharing. Memories for life will be made during these winter activities, designed in partnership between PONANT and the inhabitants of Narsalik. The watchwords of this time spent together will be curiosity and discovery.

Day 11 NARSAQ FJORD

At winter's end, venture to the ice-covered shores of the Inuit village of Narsaq. The pioneering spirit and a taste for exploration will possess you as you progress towards this small, typically Greenlandic commune. Nestling in the heart of majestic scenery, it will welcome you in a setting dominated by snowy mountains. The multicoloured façades of the houses offer a magical decor and will fill you with wonderment. You will visit the village, partake in polar treks and enjoy local performances, all of which will enable you to discover how these inhabitants live at the end of winter and help you absorb the Greenlandic philosophy.

Day 12 NANORTALIK

The Small Cruise Ship Collection

www.small-cruise-ships.com

01432 507 280 (within UK)

info@small-cruise-ships.com | small-cruise-ships.com



In the Greenlandic municipality of Kujalleq, you will explore the Inuit village of Nanortalik. A few hundred kilometres from the southern tip of Greenland, it is one of the island's southernmost locations. Fishing is the main economic resource for its inhabitants, with whom you will be able to share an unforgettable moment. While a coat of snow still covers the landscapes, enjoy winter activities and discover Inuit traditions.

Day 13 CAPE FARVEL PASSAGE

Days 14 - 15 AT SEA ABOARD LE COMMANDANT CHARCOT

Spend exceptional moments sailing aboard Le Commandant Charcot, the world's first luxury polar exploration vessel and the first PC2-class polar cruise ship capable of sailing into the very heart of the ice, on seas and oceans which the frozen conditions render inaccessible to ordinary ships. Le Commandant Charcot is fitted with oceanographic and scientific equipment selected by a committee of experts. Take advantage of the on-board lectures and opportunities for discussion with these specialists to learn more about the poles. Participate in furthering scientific research with PONANT and let us discover together what these fascinating destinations have yet to reveal to us.

Day 16 REYKJAVÍK

Iceland's capital stretches along the edge of a vast bay in the west of the country. Perlan, the "Pearl of Reykjavik", a museum located on 'Oskjuhlíð hill, offers a panoramic view of the lush, green landscapes. A little further, one can easily spot the signpost showing the way to the evangelical Hallgrímskirkja church, and to the historical centre where one can stroll along the Skólavordustigur and the Laugavegur, two lively streets with charming small shops. For some relaxation just outside of the city, visitors have the opportunity to visit the Reykjanes peninsula and its famous thermal lagoons of the Blue Lagoon.

Please Note:

We are privileged guests in these extreme lands where we are at the mercy of weather and ice conditions. Our navigation, mainly in the fjords, will be determined by the type of ice we come across; as the fast ice must be preserved, we will take this into account from day to day in our itineraries. The sailing programme, outings, activities and observation of fauna cannot be guaranteed and are subject to weather and ice conditions. The experiences are unique and vary from day to day and for each departure. The Captain and the Expedition Leader will make every effort to ensure that your experience is as rich as possible, while respecting safety instructions and regulations imposed by the AECO.

The Small Cruise Ship Collection

www.small-cruise-ships.com



small-cruise-ships.com

info@small-cruise-ships.com

YOUR SHIP: LE COMMANDANT-CHARCOT

YOUR SHIP: Le Commandant-Charcot

VESSEL TYPE:

LENGTH:

PASSENGER CAPACITY:

BUILT/REFURBISHED:

With its hybrid propulsion combining liquefied natural gas (LNG) and electric generators, Le Commandant-Charcot has been designed to minimise the environmental impact of travel to the furthest latitudes. The decoration of the ship, designed by two internationally renowned design and architecture firms - the studio of Jean-Philippe Nuel and Wilmotte & Associes - is designed to be in harmony with the environment. The approach is contemporary with the desire to create a warm and elegant setting; stone, wood and leather recall the natural environment in which the ship is sailing. Equipped with just 135 staterooms including 31 suites with balconies and outside views, Le Commandant-Charcot welcomes you in an intimate and refined atmosphere. Outstanding gastronomy in the two restaurants, relaxation in the indoor pool surrounded by its winter garden, relaxation in the well-being area with sauna and Snow Room... Like on a private yacht, each of our guests is unique. PUBLIC AREAS Le Commandant-Charcot has many common areas that are designed and equipped to meet all of your needs while preserving the intimacy of each passenger. A 177 m² reception area includes: A reception/concierge desk, An expeditions desk, The ship's administrative services, The sales office, manned by

our Hospitality & Travel Manager officer, Our boutique which sells clothing, jewellery, beauty products, postcards and various accessories, The image & photo desk. The different lounges include a 302 m² main lounge including a 28 m² cigar lounge, a tea corner and a bar, with live music on selected evenings, A 400 m² panoramic bar and lounge, An open-air Bar. The recreation spaces Fitness & Beauty Corner: Fitness room: Elliptic, running machines, bicycles... Beauty Corner: Hairdresser, Massage rooms, Sauna, Snow Room, Nail Shop. Pool area: Indoor Pool and winter garden - Outdoor Pool Theatre: Capacity: 270-276 - Main show room for conferences and live entertainment on selected evenings - State-of-the-art audio and video technology. Leisure area: Public areas - Library - Medical centre. 16



Zodiacs on board.



The Small Cruise Ship Collection

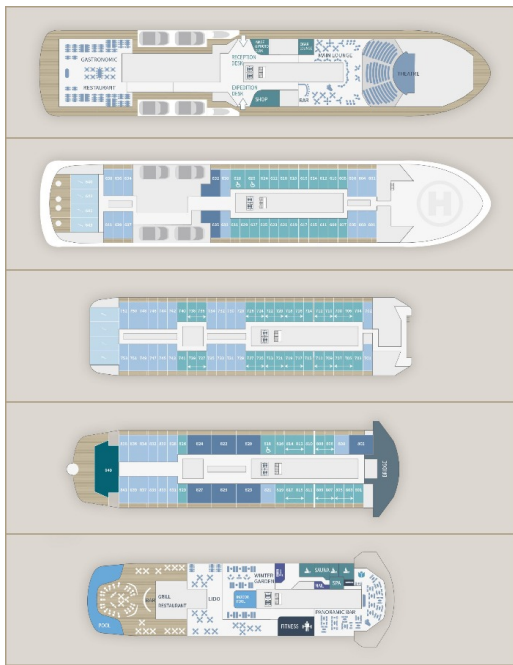
www.small-cruise-ships.com



small-cruise-ships.com

info@small-cruise-ships.com

INSIDE YOUR SHIP



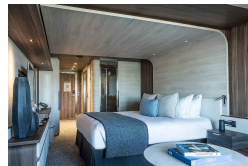
Deluxe Suite Deck 6



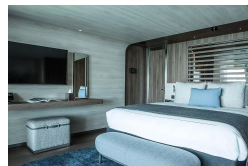
Deluxe Suite Deck 7



Deluxe Suite Deck 8



Duplex Suite



Grand Prestige Suite

Owner's Suite

Prestige Stateroom Deck 6

Prestige Stateroom Deck 7

Prestige Stateroom Deck 8

Prestige Suite Deck 7

Prestige Suite Deck 8

Privilege Suite Deck 8

The Small Cruise Ship Collection

www.small-cruise-ships.com



small-cruise-ships.com

info@small-cruise-ships.com

PRICING

06-Mar-2025 to 21-Mar-2025

Deluxe Suite Deck 8	£18279 GBP pp
Prestige Suite Deck 7	£23595 GBP pp
Suite Duplex	£36885 GBP pp
Privilege Suite Deck 8	£26719 GBP pp
Grand Prestige Suite	£25155 GBP pp
Prestige Stateroom Deck 7	£16085 GBP pp
Deluxe Suite Deck 6	£16869 GBP pp
Prestige Stateroom Deck 8	£16399 GBP pp
Prestige Stateroom Deck 6	£15775 GBP pp
Owner's Suite	£63326 GBP pp
Deluxe Suite Deck 7	£17655 GBP pp
Prestige Suite Deck 8	£24375 GBP pp

ADDITIONAL CHARGES:

Port Taxes and Fees 1110 AUD pp

13-Mar-2027 to 27-Mar-2027

Privilege Suite Deck 8	£24615 GBP pp
Deluxe Suite Deck 7	£16655 GBP pp
Deluxe Suite Deck 6	£15969 GBP pp
Duplex Suite	£33529 GBP pp
Grand Prestige Suite	£23239 GBP pp
Deluxe Suite Deck 8	£17205 GBP pp
Prestige Suite Deck 8	£22555 GBP pp
Prestige Suite Deck 7	£21869 GBP pp
Prestige Stateroom Deck 7	£15285 GBP pp
Prestige Stateroom Deck 6	£15005 GBP pp
Prestige Stateroom Deck 8	£15555 GBP pp