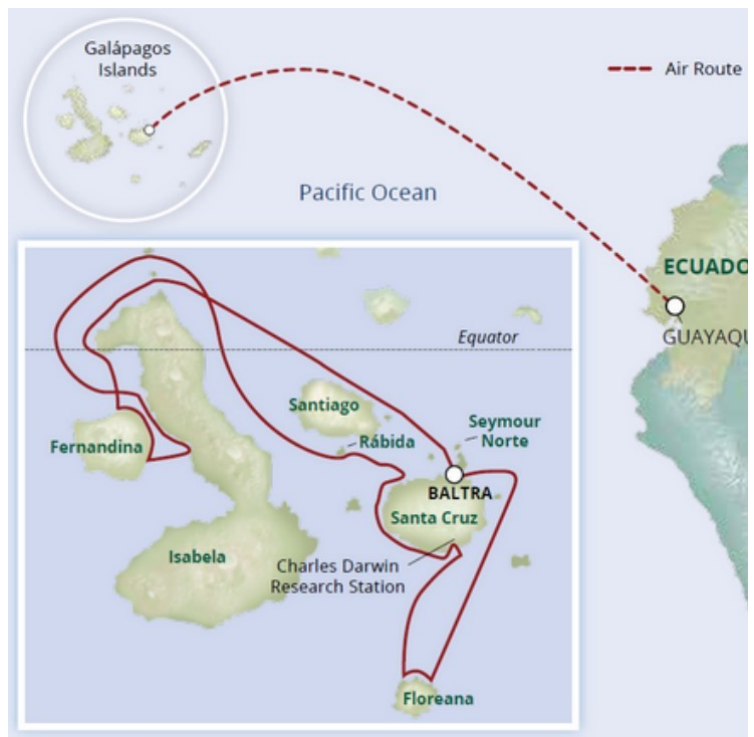




## GALAPAGOS ISLANDS CRUISE - DARWIN'S DISCOVERIES

Life Seen Nowhere Else on Earth. Darwin's discoveries in the Galapagos had a profound impact on the way we understand the world. From Ecuador's northern highlands to a yacht cruise among these notable islands—adventure, culture, wildlife, and discovery awaits you.



### ITINERARY

Day 1 Guayaquil / Arrival

Welcome to Ecuador! Begin your journey in this port city known as the gateway to the Pacific. Your first stop is the Wyndham Guayaquil, where you'll stay the night. This dazzling riverside hotel is a short walk from the vibrant Malecon 2000 boardwalk as well as historic Santa Ana Hill and its famous lighthouse. Explore the city sights on your own, relax at the rooftop pool, and get a good night's rest before your adventure. (D)



## The Small Cruise Ship Collection

[www.small-cruise-ships.com](http://www.small-cruise-ships.com)

[small-cruise-ships.com](http://small-cruise-ships.com)

[info@small-cruise-ships.com](mailto:info@small-cruise-ships.com)

### Day 2 Guayaquil / Isla Baltra - Embarkation / Isla Seymour Norte

Up and at 'em. Get an early start and travel to the legendary Galapagos Islands—UNESCO World Heritage Site. From Guayaquil, fly to Isla Baltra where your captain and crew welcome you aboard Yacht La Pinta. As Charles Darwin certainly was in 1835, you'll be awed by the unique beauty of the islands as you take your first exploratory steps on Isla Seymour Norte—home to Blue-footed boobies and Magnificent Frigatebirds. Formed by volcanic uplift, the small island of scruffy vegetation is ideal nesting terrain. Get an up-close view of these birds' quirky characteristics by hike and panga ride. (BLD)

### Day 3 Isla Isabela / Isla Fernandina

Explore Punta Vicente Roca, a marine site of impressive geological formations, by panga—your guide helps with decoding the visible clues of the islands' fiery beginnings. Beyond the geology, spy winged residents including Blue-footed boobies and flightless cormorants. The wildly rocky coast with a partially sunken cave provides phenomenal conditions for a menagerie of fish and green sea turtles. If conditions allow, don your mask, fins, and snorkel and dive in for a close-up view! Later, stretch your legs on a guided walk experiencing one of the most pristine islands in the Galápagos, Isla Fernandina. The island's active volcano erupted as recently as 2009. Thousands of marine iguanas reside here, and it's also a favorite haunt of Galápagos penguins. (BLD)

### Day 4 Isla Isabela

Large in landmass and young at one million years old, Isla Isabela supports abundant wildlife. At Urbina Bay, a stroll among the island's vegetation reveals large, colorful land iguanas and perhaps giant tortoises. Crossing from Urbina Bay

to Tagus Cove, scan the water for whales and dolphins that frequent Bolivar Channel from one of La Pinta's spacious decks. Dropping anchor at Tagus Cove—an otherworldly landscape of eroded tuff cones—there's a chance to snorkel, kayak, or ride a panga before hiking the backside of Darwin Crater overlooking a saltwater lake and panoramic views. There'll be excellent opportunities for viewing penguins, Galapagos hawks, cormorants, petrified rain (bits of lava that cooled quickly after contacting water), and old signatures from pirates and whalers etched into the rock, the oldest dating back to 1836. (BLD)

### Day 5 Isla Rabida / Isla Santa Cruz

Isla Rabida's unusual red beach is a favorite sunbathing spot for sea lions and marine iguanas. Go eye-to-eye with Blue-footed and Nazca Boobies, Yellow Warblers, several species of Darwin's Finches, and pelicans. The warm maroon-colored beach also makes a great jumping in spot for from-the-beach snorkeling. Or keep your eyes above the waterline, inspecting marine life from the glass-bottom boat. You'll have a birds-eye view from Isla Santa Cruz hiking Cerro Dragón—or, Dragon Hill—and enjoy a well-earned panorama of the island's interior, and possibly even flamingos and lounging land iguanas. (BLD)

### Day 6 Isla Santa Cruz

Today, it's all about the magnificent giant tortoise. Touring the Charles Darwin Research Station, you'll witness the exceptional conservation program where baby tortoises, "galápaguitos," are reared in protective captivity until they are old enough to safely repatriate back to their native areas. Embrace Galápagos conservation by learning about threats that still endanger this fragile ecosystem. Bring your passport along if you'd like a special Galápagos stamp. Time permitting, stroll through town as you please. After lunch at the Finch Bay Eco Hotel, explore



The Small Cruise Ship Collection

[www.small-cruise-ships.com](http://www.small-cruise-ships.com)

01432 507 280 (within UK)

[info@small-cruise-ships.com](mailto:info@small-cruise-ships.com) | [small-cruise-ships.com](http://small-cruise-ships.com)





the misty, forested highlands and see the lumbering tortoises in their natural habitat. (BLD)

#### Day 7 Isla Floreana

Your day is chock-full of adventure, with opportunities to snorkel, hike, kayak, skiff, ride the glass-bottom boat, or simply relax on the beach. Send a note home from Post Office Bay, dropping your postcard in Isla Floreana's famous, historic barrel mailbox. A hike at Baroness Viewpoint provides the perfect vantage for a photo-op. Then take in the island's geologic history with a panga ride or kayak investigation of its maze of volcanic channels. A tale of two beaches, walk along the green olivine beach of Punta Cormorant to a brackish lagoon known to be a flamingo hideout, then on to a white-sand beach where green sea turtles come ashore to nest. (BLD)

#### Day 8 Isla Baltra / Guayaquil - Disembarkation

Your adventure of a lifetime aboard La Pinta concludes back on Isla Baltra. From here, transfer to the airport for your flight to Guayaquil—where you'll await your connecting flight home, or if you've opted for our Machu Picchu extension, continue on to Quito, Ecuador for your flight to Lima, Peru. (B)

#### Please Note:

Passport required. Itineraries are guidelines; variations in itinerary and the order of days may occur to maximize your experience.



## The Small Cruise Ship Collection

[www.small-cruise-ships.com](http://www.small-cruise-ships.com)



[small-cruise-ships.com](http://small-cruise-ships.com)

[info@small-cruise-ships.com](mailto:info@small-cruise-ships.com)

### YOUR SHIP: LA PINTA

<b>YOUR SHIP:</b>	<b>La Pinta</b>
<b>VESSEL TYPE:</b>	<b>Small Ship</b>
<b>LENGTH:</b>	<b>63 metres</b>
<b>PASSENGER CAPACITY:</b>	<b>48 (in 24 cabins)</b>
<b>BUILT/REFURBISHED:</b>	<b>1983 / refurbished 2007</b>



After intense days of wildlife exploration, yacht La Pinta provides a haven of relaxation and tranquility with tastefully appointed accommodations and all the facilities for a stylish yet informal ambiance. A full week discovery trip to the Galapagos Islands aboard La Pinta allows encounters with unique fauna, like the famous giant Galapagos tortoises in the wild, land and marine iguanas, flamingos, penguins, blue-footed boobies and the famous Darwin's finches. La Pinta guests will cover all aspects of the Galapagos: discovery, adventure, environmental interpretation, aquatic activities, relaxation, superb service and great dining. Naturalist Guides enhance their interpretative skills with the use of state-of-the-art-expedition equipment. Our staff embraces a spirit of adventure, while at the same time ensures that you always travel in comfort and safety.





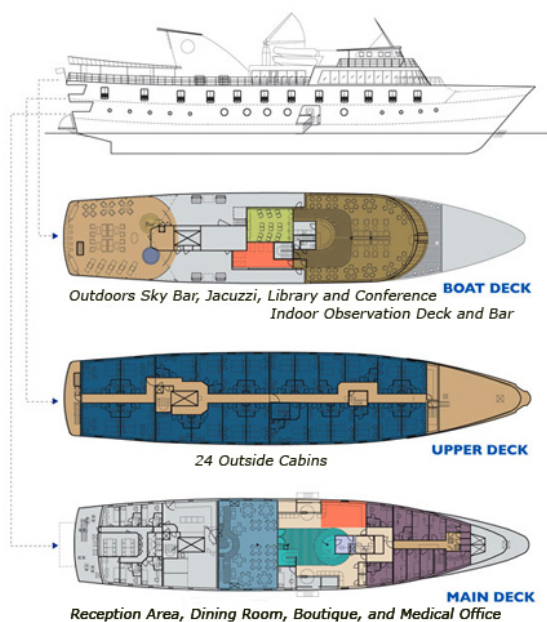
# The Small Cruise Ship Collection

[www.small-cruise-ships.com](http://www.small-cruise-ships.com)

[small-cruise-ships.com](http://small-cruise-ships.com)

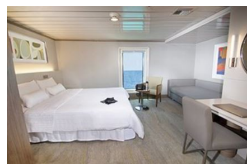
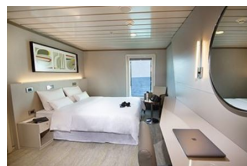
[info@small-cruise-ships.com](mailto:info@small-cruise-ships.com)

## INSIDE YOUR SHIP



Luxury Cabin/Captain Cabin

Luxury Plus Cabin/Admiral Cabin





The Small Cruise  
Ship Collection

[www.small-cruise-ships.com](http://www.small-cruise-ships.com)

[small-cruise-ships.com](http://small-cruise-ships.com)

[info@small-cruise-ships.com](mailto:info@small-cruise-ships.com)

## PRICING

08-May-2025 to 15-May-2025

Luxury Plus Cabin/Admiral Cabin	£11280 GBP pp
---------------------------------	---------------

Luxury Cabin/Captain Cabin	£10000 GBP pp
----------------------------	---------------



The Small Cruise  
Ship Collection

[www.small-cruise-ships.com](http://www.small-cruise-ships.com)

01432 507 280 (within UK)

[info@small-cruise-ships.com](mailto:info@small-cruise-ships.com) | [small-cruise-ships.com](http://small-cruise-ships.com)