



GREENLAND EXPLORER: SAIL AND SOAR THE ALPINE ARCTIC

Our Greenland Explorer voyage is designed for travelers seeking to explore the majestic fjords, glaciers and mountains of South Greenland. This itinerary offers guests one-of-a-kind excursions exclusive to Quark Expeditions—some of them only made possible by our newest ship, the technologically-advanced Ultramarine, which is equipped with two twin-engine helicopters. On this journey, you can be as active as you like, or you can opt for more relaxing, immersive experiences. Developed in partnership with local communities—a first of its kind in expedition travel—this itinerary offers unprecedented opportunities to explore the majesty of South Greenland’s diverse fjordlands. Ultramarine’s two helicopters will take you to areas in South Greenland that others can’t reach, especially for off-ship excursions. Some of these, such as our Exclusive Heli Landings and the Greenland Ice Sheet Experience, are included for all guests, who can also enjoy hikes, community visits and Zodiac cruises. This voyage—accessible to guests of all fitness levels—offers something for everyone, whether you’re interested in soaking up the serene mountain views, sailing through the icebergs on a Zodiac cruise, or trying optional activities such as heli-hiking or camping in style on the shores of Tasermiut Fjord with local hosts.

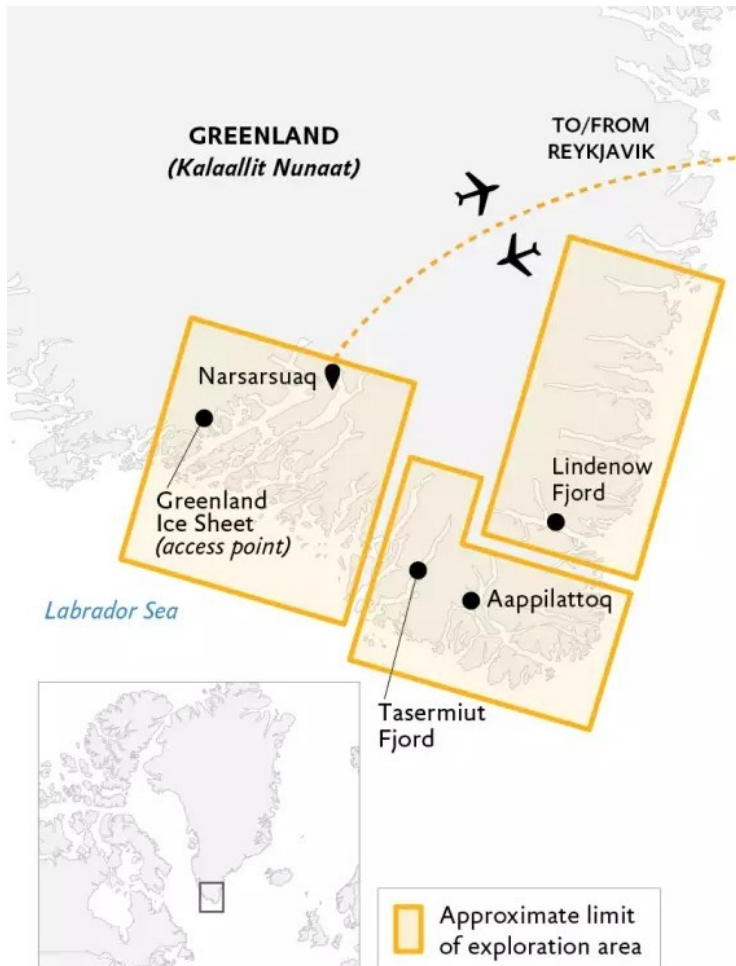
The Small Cruise Ship Collection

www.small-cruise-ships.com



small-cruise-ships.com

info@small-cruise-ships.com



In the early afternoon we will transfer you to Keflavik Airport for our private charter flight from the Icelandic capital to Narsarsuaq, Greenland, where you'll set sail on Ultramarine. A scenic community deep in Tunulliarfik Fjord, Narsarsuaq is the gateway to South Greenland. Originally established in the 1940s as a U.S. military base, the approximately 2,000-metre paved runway and small terminal are now managed by Mittarfeqarfiit (the Greenlandic Airport Authority).

Days 3 and 4 The Wild East

We set out for the wild fjords of the uninhabited east coast, one of which is Lindenow Fjord, also known by its Greenlandic name, Kangerlussuatsiaq. Thousands of years ago, groups of paleo-Inuit hunters and fishermen made their home in these isolated fjords, living off the land and surviving mostly on the resources the sea provided, before European explorers and the subsequent establishment of settlements prompted one of the biggest waves of migration in Greenland. Traces of these once proud peoples can still be found today against the backdrop of cascading glaciers and steep-walled mountains. These fjords are frequented by marine mammals. Rare sightings of polar bears are possible, as they drift down from the north on sea ice floes propelled by the East-Greenland current. Humpback whales are often sighted when entering fjords as the shallowing seas bring an upwelling of nutrients to the surface. While we keep our eyes peeled for wildlife, the magnificent alpine terrain invites us to explore by sea, land and air to immerse ourselves completely in the remote icescapes of the region. The wild east is ideal for heli landings and hiking, paddle excursions, Zodiac cruises and shore landings.

Days 5 to 7 Arctic Patagonia

ITINERARY

Day 1 Arrive in Reykjavik, Iceland

Arrive in the Icelandic capital and make your way to your included hotel. You will have the rest of the day to explore the city on your own.

Day 2 Fly to Narsarsuaq, Greenland

The Small Cruise Ship Collection
www.small-cruise-ships.com

01432 507 280 (within UK)

info@small-cruise-ships.com | small-cruise-ships.com



The Small Cruise Ship Collection

www.small-cruise-ships.com

small-cruise-ships.com

info@small-cruise-ships.com

The stunning maze of fjords, sounds, islets, inlets and skerries (rocky islands) in and around Cape Farewell (Nunap Isua) at Greenland's most southern tip possesses its own particular magic. Transiting the 100-km long Prins Christian Sund (Ikerasassuaq)—one of the world's most scenic fjords—will be truly unforgettable. Guests can then look forward to dramatic mountain and seascapes with glaciers tumbling down to down to the sea, and stunning vistas around every corner. Inhabiting this domain are Southern Greenlanders living on the frontier, a people as unique as the landscape they call home. This is where the migrating hunting peoples from the east finally settled around the European trading posts. The few villages in this southern region have gained a level of fame thanks to the inhabitants who remain steadfastly faithful to their hunting and fishing heritage. We hope to visit Aappilattoq, perched on the shores of Prins Christian Sund (Ikerasassuaq), to introduce you to our friends and partners there. We hope to offer you the opportunity to listen to their stories, hear their music, taste their food, learn about their hunting traditions, and perhaps even join a friendly game of soccer as a player or spectator. If you are looking for the most iconic peaks of South Greenland, you'll be in your glory when we reach the Tasermiut Fjord in the heart of what's known as "Arctic Patagonia," where guests can sign up for overnight camping (with local hosts) along the 70-km fjord. Marvel at the impressive Sermeq glacier at its head with rivers of ice tumbling almost down to sea level, and the imposing peaks of Nalumasortoq and Ulamertorsuaq dominating the skyline, making for the most scenic backdrops to your hike or helicopter-enabled excursions.

Days 8 to 10 The Westland

Following in the footsteps of the Greenlandic Norse into the Western fjords, it's easy to appreciate why Erik the Red chose this land as his home and gave Greenland its name: every direction you look rewards visitors with vistas of blue, ice-strewn waters set against a breathtaking backdrop of lush, verdant valleys and pastures bursting with blooms. Unique to Greenland, and indeed the entire Arctic, warm microclimates deep in the fjords have created a surprisingly fertile Arctic Garden of Eden. South Greenlandic farming traditions dating back to Viking days are still kept alive. Many families work their remote sheep farms along the shores of the fjords, their lives very much attuned to the seasons as they produce a variety of organic home-grown produce (such as potatoes, turnips and kale). Also in the West, we find the perfect access points to the Greenland Ice Sheet, the largest mass of ice in the northern hemisphere and second largest in the world, flowing from the heights of the polar plateau to sea level. Become one of the very few people to ever set foot on this incredible body of ice during our included Greenland Ice Sheet Experience. Over these two days you will have the opportunity to explore the Ice Sheet, hike the surrounding foothills, cruise or paddle through the azure ice-filled waters, and engage with our local friends and partners during the most meaningful and in-depth community experiences offered on any Quark Expeditions voyage. Before you depart on your charter flight back to Reykjavik in the early evening of day 10, we plan to spend the day visiting the sites surrounding Narsarsuaq, including the Kujataa UNESCO World Heritage Site, which is a living history lesson in Viking farming. We hope to offer you the opportunity to visit charming Qassiarsuk, a small sheep farming settlement across the fjord from Narsarsuaq, where you can experience true South Greenland hospitality and gain insight into the fascinating lives of sheep farmers living at the edge of

The Small Cruise Ship Collection
www.small-cruise-ships.com

01432 507 280 (within UK)

info@small-cruise-ships.com | small-cruise-ships.com



the Ice Sheet. We suggest you take time to explore the remains and replicas of Brattahlíð, Erik the Red's estate, once the epicenter of the Greenland Norse Eastern Settlement, before heading back across the bay to Narsarsuaq to visit the museum, hike to Signal Hill for a panoramic view, and enjoy the frontier-town ambience. Before our early evening charter flight, we will celebrate our voyage with a 'Farewell to Greenland' dinner ashore at the iconic Hotel Narsarsuaq. Upon landing back at Reykjavik's international airport in the evening, you will be transferred to a hotel in nearby Keflavik.

Day 11 Depart Reykjavik, Iceland

Today, you can make your way home at your leisure or continue your independent explorations of Iceland.

Please Note:

Itineraries are subject to change.

The Small Cruise Ship Collection

www.small-cruise-ships.com



small-cruise-ships.com

info@small-cruise-ships.com

YOUR SHIP: ULTRAMARINE

YOUR SHIP: Ultramarine

VESSEL TYPE:

LENGTH:

PASSENGER CAPACITY:

BUILT/REFURBISHED:

Ultramarine is designed to go beyond the familiar in polar exploration, to discover new places, and to immerse you in the best the region has to offer. Equipped with two twin-engine helicopters, Ultramarine offers the most robust portfolio of adventure activities in the industry, the most spacious suites in its category, breathtaking public spaces, and more outdoor wildlife viewing spaces than other expedition ships its size. It also features an innovative mix of sustainability features that exceed all industry standards. With all this and more, Ultramarine is set to deliver the ultimate polar expedition experience. Cabin - Spacious Entryways, Personal Safes, Spa-inspired Bathrooms, Heated Bathroom Floors, Premium beds and bed linens, Convertible Beds, Individual Temperature Controls, HD Flatscreen Televisions, Oversized Windows With Sweeping Views, Electrical Supply: 220V Aboard - 2 Dining Areas, 4 Bars, Panorama Lounge, Lecture Theater, Library, Polar Boutique, Spa & Fitness Center, Oceanview Sauna, Zodiac Hangar with 4 Embarkation Points, 2 Ready Rooms with Individual Lockers, Walkaround Deck, Bridge Activities - Flightseeing (Included), Zodiac Cruising (Included), Hiking (Included), Lectures (Included), Camping (Optional), Sea

Kayaking (Optional), Stand-Up Paddleboarding (Optional), Paddle Excursions (Optional), Cross Country Skiing (Optional), Mountaineering



(Optional)

The Small Cruise Ship Collection

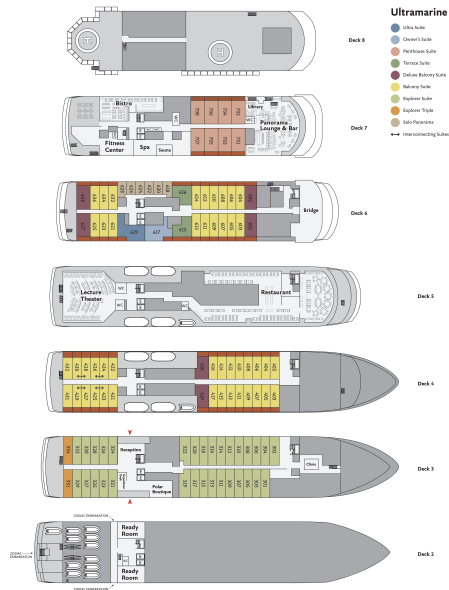
www.small-cruise-ships.com



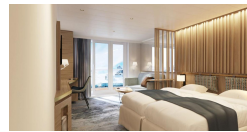
small-cruise-ships.com

info@small-cruise-ships.com

INSIDE YOUR SHIP



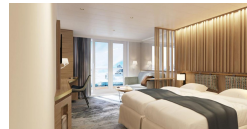
Balcony Suite



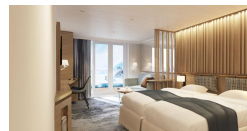
Deluxe Balcony Suite



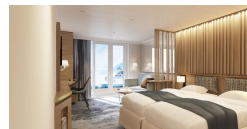
Explorer Suite



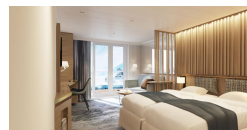
Explorer Triple



Owner's Suite



Penthouse Suite



Solo Panorama

Terrace Suite



The Small Cruise Ship Collection

www.small-cruise-ships.com



small-cruise-ships.com

info@small-cruise-ships.com

PRICING

14-Sep-2024 to 24-Sep-2024

Ultra Suite	£21112 GBP pp
Explorer Triple	£8632 GBP pp
Penthouse Suite	£15184 GBP pp
Deluxe Balcony Suite	£14144 GBP pp
Balcony Suite	£12584 GBP pp
Explorer Suite	£11388 GBP pp
Terrace Suite	£14612 GBP pp
Solo Panorama	£15184 GBP pp
Owner's Suite	£19084 GBP pp

22-Sep-2024 to 02-Oct-2024

Explorer Suite	£11388 GBP pp
Owner's Suite	£19084 GBP pp
Penthouse Suite	£15184 GBP pp
Explorer Triple	£8632 GBP pp
Ultra Suite	£21112 GBP pp
Terrace Suite	£14612 GBP pp
Deluxe Balcony Suite	£14144 GBP pp
Solo Panorama	£15184 GBP pp
Balcony Suite	£12584 GBP pp



www.small-cruise-ships.com

01432 507 280 (within UK)

info@small-cruise-ships.com | small-cruise-ships.com