



The Small Cruise Ship Collection

www.small-cruise-ships.com

small-cruise-ships.com

info@small-cruise-ships.com

AT THE HEART OF THE GREEK ISLANDS LUXURY CRUISE

The Greek Islands, from the Peloponnese to the Cyclades via the Dodecanese, are enchanting, bewitching and captivating. From the sheer coastlines bordered by paradisiacal turquoise waters to the archaeological sites that are as emblematic as they are monumental, let yourself fall under the spell of these jewels of the Aegean Sea. From Athens, set sail aboard L'Austral for an 8-day cruise in the heart of the most beautiful Greek islands. Throughout your journey, you will benefit from an excursion included per person per port of call, to choose from a selection offered by PONANT. During this cruise, admire the ancestral history of Hydra through its famous monuments and museums, discover the monastery of Saint John and the Cave of the Apocalypse where the last book of the New Testament was revealed to John the Apostle, from Patmos, or admire the sumptuous archaeological sites, from the Temples of Zeus, Apollo and Athena to the Terrace of the Lions, from Delos. The diversity of experiences on offer promises you intense and varied moments (to discover the full range of excursions, go to the itinerary tab). The diversity of experiences on offer promises you intense and varied moments (to discover the full range of excursions, go to the itinerary tab). In the Dodecanese archipelago, the island of Patmos, known as "the Jerusalem of the Aegean Sea", reveals itself to offer you a moment suspended between unique landscapes of white-sand beaches and rocky bays. Planted with forests of cypress trees and olive groves, Symi is bewitching. The shimmering colours of its dwellings and surrounding nature make it a real paradise for those seeking tranquillity and serenity. You will now head towards the most easterly part of the Cyclades. Amorgos, or the

island in the Big Blue film, as it is nicknamed, is a rough gem. Fall under the spell of its volcanic and mountainous landscapes diving into the bordering crystal-clear waters and its paved small streets edged by traditional whitewashed houses. After an unforgettable cruise in Santorini's captivating caldera, where high cliffs surround the majestic ancient crater engulfed by water in the 2nd millennium BC, you will set sail north west. On Milos, the limestone cliffs and small hidden coves are yours to discover in a soothing atmosphere. The birthplace of Artemis and Apollo, Delos is rich in archaeological ruins, UNESCO World Heritage Sites, illustrating its prestigious history. A journey back in time almost 2,000 years, between millennia-old heritage and sumptuous panoramas. L'Austral will then head towards Paros. Nestling in the heart of the Cyclades archipelago, this island reputed for its sublime white marble offers a real concentration of Greek beauty, from whitewashed houses to olive groves to ancient monuments. You will now sail towards the east of the Peloponnese, to reach your final port of call. Here, a gem named Hydra reveals its old-world charm in a stunning setting. With its hidden coves and its mountains topped with monasteries, this jewel of the Saronic Islands completely devoid of cars offers a total change of scenery against the spellbinding blue of the Aegean Sea. Athens, the mythical city dominated by the Acropolis and its monuments, which form the most extraordinary architectural and artistic ensemble bequeathed to the world by Ancient Greece, will mark the end of this

The Small Cruise Ship Collection

www.small-cruise-ships.com

01432 507 280 (within UK)

info@small-cruise-ships.com | small-cruise-ships.com

The Small Cruise Ship Collection

www.small-cruise-ships.com

small-cruise-ships.com

info@small-cruise-ships.com



discover Athens' cultural past.

Day 2 PATMOS

Patmos is one of the legendary must-see islands in the Dodecanese. This is where Saint John resided, presumed author of the last book in the Bible. The cave of the Apocalypse and the Saint John Monastery are dedicated to him. These sites, which are listed by UNESCO as World Heritage, are located at the top of a hillside planted with vines and orchards. On the shore, the crystalline coves of Kambos and Lampi offer absolutely gorgeous swimming areas.

Day 3 SYMI

A simply ravishing gem in the Dodecanese, Symi is located north-west of Rhodes. This island of cypress forests, vineyards and olive orchards, possesses a capital city of the same name that is as colourful as the surrounding countryside. The charm of the port district of Gialos is not to be missed: its quaysides are lined with picturesque houses with multi-coloured facades. You can get to the upper town by car or climb the 500 steps up the Kali Strata ramp. The second option offers superb viewing points of the coast and gorgeous turquoise waters.

Day 4 AMORGOS & SAILING IN THE SANTORINI CALDERA

It's no accident that the island of Amorgos was chosen as a shooting location for Luc Besson's film, The Big Blue. You too will fall under the charm of this island as your ship edges closer.

exceptional odyssey.

ITINERARY

Day 1 ATHENS

The Greek capital city is located on the edge of the Saronic gulf, in the east of the country. It bears a plural name in reference to the first villages that surround the Acropolis. You will be enchanted by the rocky plateau presided by its monuments listed as UNESCO World Heritage. In the city below, you can visit some of the liveliest districts in Athens: Plaka, with its maze of colourful streets, and where, in the evenings the drifting aroma of moussaka and garlic prawns will tickle your taste buds. The National Archaeological museum and the Cycladic Art Museum are also some of the city's key attractions and allow visitors to



The Small Cruise Ship Collection

www.small-cruise-ships.com

small-cruise-ships.com

info@small-cruise-ships.com

Amorgos is the most easterly island in the Cyclades and stands out for its rocky inlets with crystal-clear water and its small, picturesque villages. This port of call will be your chance to visit one of the prettiest villages in the Cyclades, Chora, and discover its cobbled streets and whitewashed houses overlooked by a castle. Byzantine churches, windmills and courtyards brimming with flowers complete this typical tableau of timeless Greece. Sailing in the waters of Santorini caldera is breathtaking. The gigantic scale of the unique setting, the majesty of the high cliffs surrounds this ancient crater that was flooded in 2000 years before Christ, is one of the highlights of the cruise. From your ship, the colourful whites, greys, reds of the volcanic rocks, the blue of the Aegean Sea and the immaculate perched villages form a unique and marvellous spectacle.

Day 5 ADAMAS, MILOS

Although Milos is especially renowned for the famous statue of Venus found in a field there and now displayed in the Louvre in Paris, this mineral island is also a geological treasure. Its volcanic origin is evident in its breathtaking landscapes and the colours of its cliffs, ranging from pure white to deep red. You'll discover the wild beauty of the shorelines lined with the most beautiful beaches in Greece from a ship deck, and you'll enjoy privileged access to emerald-green coves. Tiny fishing ports like Adamas hide there, with brightly-painted doors and terraces. Milos is a charming port of call in the heart of the Cyclades.

Day 6 DELOS & MYKONOS

This legendary Cyclades island of Delos stands just a few miles

southwest of Mykonos. The ceremonial solemnity of this ancient holy sanctuary will not leave you indifferent. The sheer size and importance of this UNESCO World Heritage site which covers over half of the island is thrilling in itself. From the Stoa of Antigonos, the Terrace of the Lions, to the carved marble animal statues, you will make discovery after discovery, against a backdrop of the Aegean stretching to the horizon. The theatre steps on the hillside are a particularly good place from which to enjoy the expansive view. Nicknamed "little Venice", Mykonos is famous for its Alefkandra district where houses are built right on the water's edge. Their multi-coloured loggias are emblematic of this Cyclades island, as are the pelicans and windmills. You can get close up to the birds on the quaysides of the old port. Up on the hillside, you can see the windmill sails turning. In the cobbled streets of the pedestrian centre, bougainvillea bedeck immaculate facades. As you weave in and out of the little streets, snatches of coastline will undoubtedly call you to the island's beaches, the quietest of which can be found on the northern coast.

Day 7 HYDRA

This unusual gem belonging to the Saronic islands is located to the east of the Peloponnese. There are no cars here. Named after the island, the harbour town is layered up the slopes of a mountainous bay. You may be surprised to see beautiful stone mansions. These are traditional here, as are the multi-coloured caiques along the quays. Further along the shore, you will discover the Historical Archives Museum. Collections from Athens National History Museum are exhibited in the elegant villa Koundouriotis.

The Small Cruise Ship Collection
www.small-cruise-ships.com

01432 507 280 (within UK)

info@small-cruise-ships.com | small-cruise-ships.com



The Small Cruise
Ship Collection

www.small-cruise-ships.com

small-cruise-ships.com

info@small-cruise-ships.com

Day 8 ATHENS

The Greek capital city is located on the edge of the Saronic gulf, in the east of the country. It bears a plural name in reference to the first villages that surround the Acropolis. You will be enchanted by the rocky plateau presided by its monuments listed as UNESCO World Heritage. In the city below, you can visit some of the liveliest districts in Athens: Plaka, with its maze of colourful streets, and where, in the evenings the drifting aroma of moussaka and garlic prawns will tickle your taste buds. The National Archaeological museum and the Cycladic Art Museum are also some of the city's key attractions and allow visitors to discover Athens' cultural past.

Please Note:

Itineraries are subject to change.



The Small Cruise
Ship Collection

www.small-cruise-ships.com

01432 507 280 (within UK)

info@small-cruise-ships.com | small-cruise-ships.com



The Small Cruise Ship Collection

www.small-cruise-ships.com

small-cruise-ships.com

info@small-cruise-ships.com

YOUR SHIP: L'AUSTRAL

YOUR SHIP:	L'Austral
VESSEL TYPE:	142 metres. Passenger Capacity: 264 (200 in Antarctica). Built: 2011
LENGTH:	2011
PASSENGER CAPACITY:	
BUILT/REFURBISHED:	

Luxury Expedition / Cruise Ship This superb mega-yacht with 132 cabins is the result of the expertise of the Italian Fincantieri shipyard and French sophistication, as interpreted by designer Jean-Philippe Nuel. L'Austral has a unique atmosphere, a subtle blend of luxury, intimacy and well-being. A sleek silhouette softened by elegantly smooth contours and large, arched windows opening up to the sea and the light: so many features come together to give L'Austral her distinctive shape. Precious materials, discreet elegance and a perfect balance between chic and casual, combine to make you feel as if you are on your own private yacht. A design blending tradition and innovation, where a nautical mood has been subtly recreated. Precious materials in soothing neutral tones are brought to life with splashes of cheerful reds. So many personal touches create the spirit of a "private yacht". Suites and staterooms You can expect magnificent ocean views as 124 staterooms and suites have balconies. Individually-controlled airconditioning · Cabin layout: kingsize bed, or twin beds, communicating cabins available (children welcome) · Minibar · Flat screen satellite TV · iPod™

players · Desk with stationery · Electronic safe · French bath products · Dressing table and hairdryer · Bath robes · Satellite direct line telephone · 110/220 volts · 24hr room service · WiFi · Balcony Cuisine Loyal to the great French tradition, the haute cuisine on board is worthy of the finest restaurants, where discreet, attentive service is the hallmark. Choose from two restaurants for breakfasts, lunch and dinner. The Gastronomic Restaurant is situated on Le Liberte Deck and serves you French and international cuisine accompanied by fine wine. On the Grill Restaurant, you have the opportunity to eat outside and enjoy buffet lunch and themed dinner. Life On Board Whether you want to join other guests in the theatre or games area (Wii™ consoles, etc), or relax on your own in a quiet corner of the library, L'Austral has been designed to meet the needs of every guest. Everything has been done to preserve the independence of each guest to suit their personal tastes: lounges for lectures and shows, a spa in partnership with Sothys™, but also more intimate spaces such as the library and internet corner. Comfortable cabins, nearly all with private balcony, are available for families either as triples or as communicating cabins. There is also a games area with Wii™ consoles, children's menus, and a baby-sitting service. Just as if you were on a private yacht, your time is your own to do as you please. Fitted with the latest equipment (Kinesis Wall, running machine) and in partnership with the famous Sothys™ brand, the Beauty Centre on L'Austral welcomes you for some unforgettable moments of relaxation and pampering (beauty treatments, hairdresser). Wheelchairs 3 specially adapted wheelchair cabins (Deck 3 = Superior cabin no. 307, no balcony, Deck 4 = Prestige Cabin no. 407 - with

The Small Cruise Ship Collection
www.small-cruise-ships.com

01432 507 280 (within UK)

info@small-cruise-ships.com | small-cruise-ships.com

The Small Cruise Ship Collection

www.small-cruise-ships.com

small-cruise-ships.com

info@small-cruise-ships.com

balcony and Deck 5 = Prestige Cabin no 509, with balcony) and lifts to all decks/areas. Details Please click the following links to read more about Ponant and the other Ponant



cruise ships.

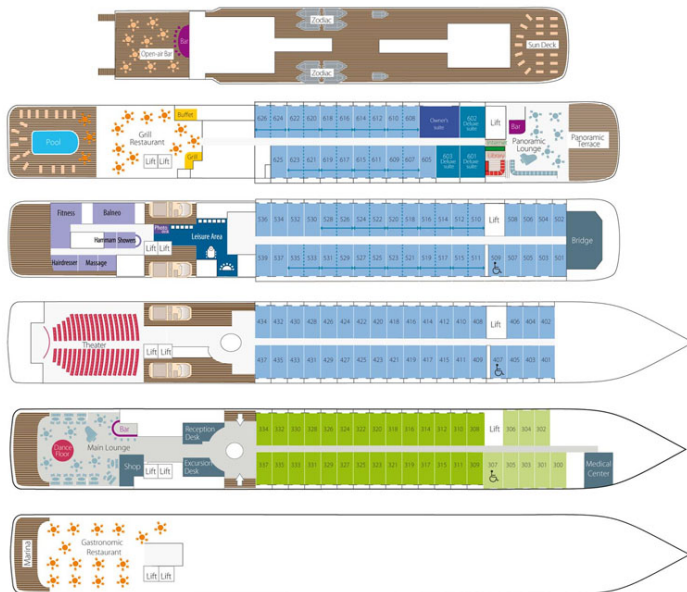
The Small Cruise Ship Collection

www.small-cruise-ships.com

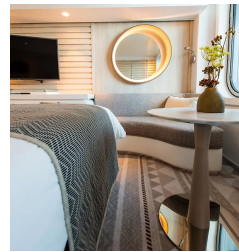
small-cruise-ships.com

info@small-cruise-ships.com

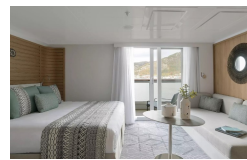
INSIDE YOUR SHIP



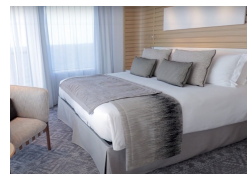
Deluxe Stateroom



Deluxe Suite



Grand Deluxe Suite



Owner's Suite



Prestige Deck 4

Prestige Deck 5

Prestige Deck 5 Suite

Prestige Deck 6

Prestige Deck 6 Suite

Prestige Stateroom Deck 4

Prestige Stateroom Deck 5

Prestige Stateroom Deck 6

Prestige Suite Deck 5

Prestige Suite Deck 6

Privilege Suite

Superior Stateroom

The Small Cruise Ship Collection

www.small-cruise-ships.com

01432 507 280 (within UK)

info@small-cruise-ships.com | small-cruise-ships.com

The Small Cruise Ship Collection

www.small-cruise-ships.com

small-cruise-ships.com

info@small-cruise-ships.com

PRICING

29-Jun-2025 to 06-Jul-2025

Prestige Suite Deck 5	£9725 GBP pp
Prestige Stateroom Deck 5	£5095 GBP pp
Prestige Suite Deck 6	£9965 GBP pp
Privilege Suite	£10455 GBP pp
Prestige Stateroom Deck 6	£5395 GBP pp
Owner's Suite	£12645 GBP pp
Deluxe Stateroom	£4605 GBP pp
Deluxe Suite	£8755 GBP pp
Grand Deluxe Suite	£12645 GBP pp
Prestige Stateroom Deck 4	£4855 GBP pp

02-Jul-2025 to 09-Jul-2025

Superior Stateroom	£4185 GBP pp
Deluxe Suite	£8385 GBP pp
Prestige Stateroom Deck 4	£4649 GBP pp
Deluxe Stateroom	£4415 GBP pp
Prestige Stateroom Deck 5	£4889 GBP pp
Prestige Suite Deck 6	£9555 GBP pp
Prestige Suite Deck 5	£9315 GBP pp
Owner's Suite	£11885 GBP pp
Prestige Stateroom Deck 6	£5165 GBP pp

10-Jul-2026 to 17-Jul-2026

Prestige Deck 4	£3729 GBP pp
Superior Stateroom	£3365 GBP pp
Deluxe Suite	£6675 GBP pp
Deluxe Stateroom	£3545 GBP pp
Prestige Deck 6	£4135 GBP pp
Prestige Deck 5 Suite	£7405 GBP pp
Prestige Deck 5	£3915 GBP pp
Prestige Deck 6 Suite	£7589 GBP pp

ADDITIONAL CHARGES:

Port Taxes & Fees 520 AUD pp