

# The Small Cruise Ship Collection

www.small-cruise-ships.com

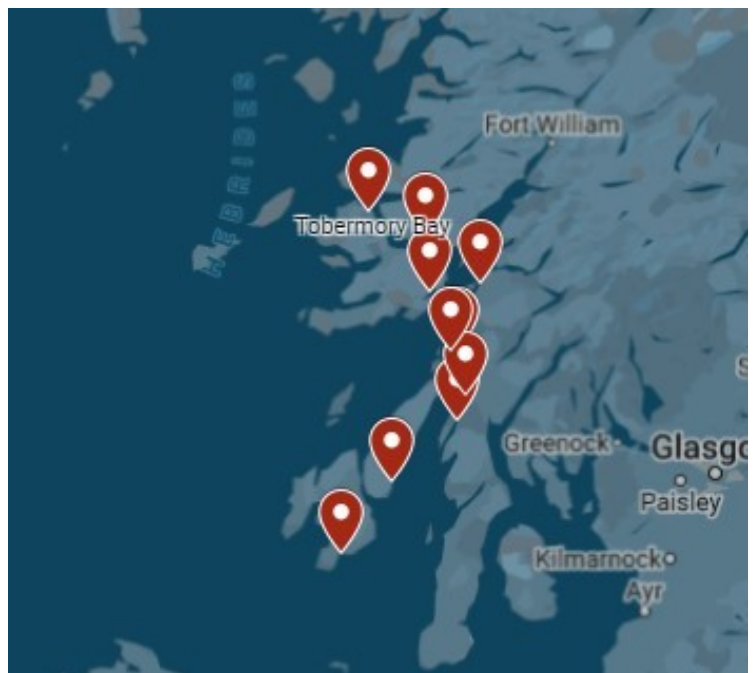


small-cruise-ships.com

info@small-cruise-ships.com

## HEBRIDEAN CRUISE: WILDLIFE & MALT WHISKY

Single Malt whisky, made in an individual distillery from malted barley, distilled in copper pot stills and matured in oak casks, is one of the wonders of Scotland. Mixed with magnificent wildlife and spectacular Scottish islands it creates an unforgettable Hebridean cruise on one of our three small ships. In this Scottish wildlife and whisky cruise you can sample the delights of some of the most famous single malts from some of the most famous of "malt whisky islands" – Mull, Jura and especially Islay with its many distilleries. On the way you can see the incredible wildlife - soaring sea and golden eagles, basking sharks, minke whales, porpoises, dolphins, seabirds and seals. Included in the price is a visit to three famous whisky distilleries on Islay. There will be a guided tour at two whisky of the distilleries. Other excursions and visits ashore are at your own cost.



### ITINERARY

Days 1 - 8 Hebridean Cruise

Some of the places we may visit are: Oban: Your departure point will be Oban (Dunstaffnage Marina), the gateway to the Hebridean isles. After a short introduction to life on board our small ship we set sail to our first destination. Loch Spelve: The anchorage in this sheltered loch, which is surrounded by an ancient oak forest, gives us unparalleled views of the mountains of Mull. There are resident otters along its shoreline. We can also pick up some locally grown mussels before we leave to our next destination. Shuna Island: Sail along the Isle of Lismore and into the Firth of Lorn and then, with the tide in our favour, (a

The Small Cruise Ship Collection

www.small-cruise-ships.com

01432 507 280 (within UK)

info@small-cruise-ships.com | small-cruise-ships.com



## The Small Cruise Ship Collection

[www.small-cruise-ships.com](http://www.small-cruise-ships.com)

[small-cruise-ships.com](http://small-cruise-ships.com)

[info@small-cruise-ships.com](mailto:info@small-cruise-ships.com)

must as the currents can run at five knots in these parts) we enter the Sound of Luing. We shoot past the famous Fladda lighthouse, the over falls and eddies of these fast running waters make extraordinary spiral patterns and glassy runs in the sea. The waters calm as we pass the southern tip of Luing Island and enter Shuna Sound. Our quiet anchorage off the North coast of the Isle of Shuna is a spot where otters frequently play along the shoreline. On the way to the remote island of Shuna, and at anytime during the trip, we may see soaring sea or golden eagles, porpoises and dolphins, as well as many types of seabirds. Craighouse, Jura: We travel down the Shuna Sound with tidal planning again important as we will pass the notorious Gulf of Corryvreckan with its six knot tides which can be heard roaring 30 miles inland when there is a storm of wind against tide. We pass the northern headland of Jura, where George Orwell's cottage can still be seen where he wrote 1984, to sail down the Sound of Jura. The magnificent Munro mountains, the three "Paps of Jura", can be seen rising over the craggy cliffs of Jura's shoreline to dominate the southern end of the Sound of Islay. Our destination anchorage is off Craighouse the home of the Jura Distillery and home to two distinct malts: sweet Origin and smoky Superstition. Islay: Islay is the Malt Whisky capital of the world. Our anchorage is in Kilnaughton Bay, off Port Ellen, which is Islay's main town (the Port Ellen distillery closed in 1983 but the maltings are still in operation). We are spoilt for choice for distillery visits: Lagavulin distillery is just north of Port Ellen and, close by, are the other world famous distilleries of Ardbeg and Laphroaig. They all use Islay's peaty water and peated malt to give their famous powerful, salty, peaty, iodiney flavours. In contrast, the northern distilleries of Bunnahabhain and Bruichladdich draw their water directly from springs to give lighter, nuttier flavours. Caol Ila, close to Bunnahabhain,

produces a delicate flavoured malt, while Bowmore, the oldest distillery on the island (1779), in the middle of the town of Bowmore and on the banks of a loch, has its own very distinctive peaty, salty taste. Loch Sween: We travel to an anchorage in the upper reaches of beautiful Loch Sween - its seal population lining its banks to watch our progress. We will pass the natural anchorage of Tayvallich, once a famous Viking harbour. Crinan Canal: We can anchor just outside the Crinan Canal which has truly magnificent scenery and is rich in history, with many world-class heritage sites. It is a designated wildlife reserve with miles of forest walks and cycle ways. Guests can choose to do a three hour walk from Tayvallich to the Crinan Canal. Isle of Luing: Passengers can be dropped off at the little village of Toberonochy and do the lovely walk to the Atlantic Islands Centre. Loch Aline: A delightful loch off the Sound of Mull. In Loch Aline there are woodland walks and, at the head of the loch, is ancient Ardtornish estate and woodland gardens. Tobermory: Head up the Sound of Mull to Tobermory, one of the most picturesque towns in the Western Isles and home to one of the oldest (1798) commercial whisky distilleries in Scotland. Here they produce two malts: the un-peated Tobermory and the smoky Ledaig. You can visit the whisky distillery and sample these very different flavours. You can also wander along the streets, visit the delightful local museum, perhaps watch a pipe band, admire the wooden fishing boats and take in the long history of this lovely village.

#### Please Note:

Please note that your voyage is weather dependent. Weather doesn't just mean good or bad weather. There are many considerations such as tidal gates, wind direction and strength, the strength and direction of currents, overfalls, and fetch.

The Small Cruise Ship Collection

[www.small-cruise-ships.com](http://www.small-cruise-ships.com)

01432 507 280 (within UK)

[info@small-cruise-ships.com](mailto:info@small-cruise-ships.com) | [small-cruise-ships.com](http://small-cruise-ships.com)



# The Small Cruise Ship Collection

[www.small-cruise-ships.com](http://www.small-cruise-ships.com)



[small-cruise-ships.com](http://small-cruise-ships.com)

[info@small-cruise-ships.com](mailto:info@small-cruise-ships.com)

Depending upon the weather and nature's conditions, wildlife viewing varies. If you wish to visit a specific place or have a specific experience, such as sea eagle tours or whisky tasting, then please do let your skipper know and he will endeavour to meet your request.



The Small Cruise  
Ship Collection

[www.small-cruise-ships.com](http://www.small-cruise-ships.com)

**01432 507 280** (within UK)

[info@small-cruise-ships.com](mailto:info@small-cruise-ships.com) | [small-cruise-ships.com](http://small-cruise-ships.com)





## The Small Cruise Ship Collection

[www.small-cruise-ships.com](http://www.small-cruise-ships.com)



[small-cruise-ships.com](http://small-cruise-ships.com)

[info@small-cruise-ships.com](mailto:info@small-cruise-ships.com)

## YOUR SHIP: GEMINI EXPLORER

**YOUR SHIP:** Gemini Explorer

**VESSEL TYPE:**

**LENGTH:**

**PASSENGER CAPACITY:**

**BUILT/REFURBISHED:**

Gemini Explorer, a mini cruise ship, is a historic, converted cruising lifeboat that once roamed the Western Approaches and was involved in the storm of the ill-fated 1979 Fastnet Race. Gemini Explorer was built in 1974 in Bideford Shipyard as the City of Bristol (70-003), one of three, Clyde class, cruising lifeboats (see Wikipedia) with an extended offshore range of 1700 miles. She is powered by two powerful Gardner diesel engines and she will achieve speeds of up to twelve knots. The Gemini Explorer entered service at the Clovelly Lifeboat Station on the North Devonshire coast and, after saving 44 lives, was finally retired in 1989. Since then, after extensive re-fits and modifications (including a new galley, high bulwarks, viewing top deck, en-suite accommodation and a well lit saloon), she has been converted to a mini cruise ship and today sails as the Gemini Explorer. However, there are parts of the insides of the vessel that have been kept in their original state to give an exciting insight in to role she once played as a cruising lifeboat. As a mini cruise ship she has voyaged as far away as Greenland and, for the last 10 years, sailed as a charter vessel on the east coast of Scotland. In 2020 after a further refit and upgrade she will be sailing the beautiful islands and sea lochs of Scotland's

west coast as part of St Hilda Sea Adventures little fleet. Accommodation The deck saloon is where everyone dines and socialises and where everyone enjoys a convivial atmosphere that is encouraged by shipboard life aboard this ex-cruising lifeboat. Cabins are warm and comfortable with eight berths for our guests. In the forward part of the vessel there is a double en-suite, a twin en-suite and single en-suite. In the aft part of the vessel there is a cabin which can sleep up to three guests (choice of one double bed and two single berths). This aft cabin shares the bathroom with the two crew. All en-suites and the bathroom have a washbasin, toilet and shower. All cabin linen and towels are supplied. There is an upper viewing deck complete with teak benches and perfect for spotting wildlife and relaxing. You also have some deck space to embark your own equipment such as kayaks and paddleboards. You will also be able to use the onboard two person



The Small Cruise  
Ship Collection

[www.small-cruise-ships.com](http://www.small-cruise-ships.com)

**01432 507 280** (within UK)

[info@small-cruise-ships.com](mailto:info@small-cruise-ships.com) | [small-cruise-ships.com](http://small-cruise-ships.com)



# The Small Cruise Ship Collection

[www.small-cruise-ships.com](http://www.small-cruise-ships.com)



[small-cruise-ships.com](http://small-cruise-ships.com)

[info@small-cruise-ships.com](mailto:info@small-cruise-ships.com)



sea kayak.



The Small Cruise Ship Collection

[www.small-cruise-ships.com](http://www.small-cruise-ships.com)

**01432 507 280** (within UK)

[info@small-cruise-ships.com](mailto:info@small-cruise-ships.com) | [small-cruise-ships.com](http://small-cruise-ships.com)



# The Small Cruise Ship Collection

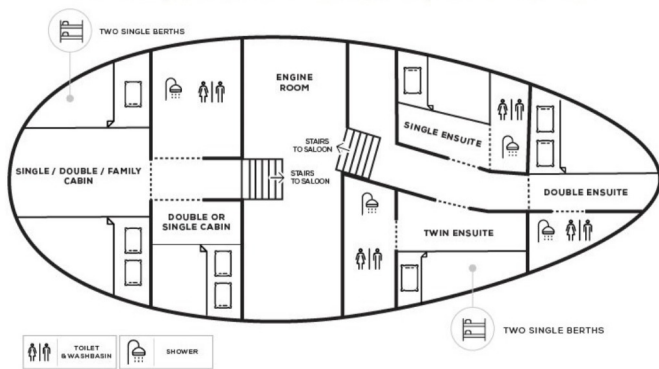
www.small-cruise-ships.com



small-cruise-ships.com

info@small-cruise-ships.com

## INSIDE YOUR SHIP



Double Cabin En-suite



Single Cabin



Single Cabin En-suite

Twin / Double Cabin



Twin / Double Cabin En-suite

Twin Cabin





# The Small Cruise Ship Collection

[www.small-cruise-ships.com](http://www.small-cruise-ships.com)



[small-cruise-ships.com](http://small-cruise-ships.com)

[info@small-cruise-ships.com](mailto:info@small-cruise-ships.com)

## PRICING

### 12-May-2025 to 20-May-2025

Double Cabin En-suite	£2980 GBP pp
Twin Cabin En-suite	£2980 GBP pp
Twin Cabin	£2260 GBP pp

### 12-May-2025 to 20-May-2025

Twin / Double Cabin	£2260 GBP pp
Single Cabin	£2060 GBP pp
Twin / Double Cabin En-suite	£2980 GBP pp
Single Cabin En-suite	£2980 GBP pp

### 20-May-2025 to 28-May-2025

Twin Cabin	£1560 GBP pp
Twin Cabin En-suite	£2120 GBP pp
Double Cabin En-suite	£2480 GBP pp

### 12-May-2026 to 20-May-2026

Single Cabin En-suite	£3140 GBP pp
Twin / Double Cabin	£2300 GBP pp
Single Cabin	£2100 GBP pp
Twin / Double Cabin En-suite	£3140 GBP pp



The Small Cruise Ship Collection

[www.small-cruise-ships.com](http://www.small-cruise-ships.com)

01432 507 280 (within UK)

[info@small-cruise-ships.com](mailto:info@small-cruise-ships.com) | [small-cruise-ships.com](http://small-cruise-ships.com)