

The Small Cruise Ship Collection

www.small-cruise-ships.com

small-cruise-ships.com

info@small-cruise-ships.com

HIGHLIGHTS OF ANTARCTICA EXPEDITION - FLIGHTS INCLUDED

Breathtaking icescapes. Marvel at colossal glaciers and icebergs on this incredible Antarctica expedition cruise. Experience nature's majesty as we navigate ever-changing icescapes on our hybrid-powered ship. Your Expedition Team will bring you close to your stunning surroundings on ice-cruising and landing activities. Antarctic wildlife. It's a busy time for the wildlife of Antarctica between November and March. In October and November, penguins court and nest, while December and January are when penguins hatch. February and March offer peak whale-watching opportunities.



ITINERARY

Day 1-2 The beat of Buenos Aires

Feel the rhythm of bustling Buenos Aires

Your journey begins with a flight from Australia to Buenos Aires.

Home to a proud and diverse community of porteños, or 'people of the port', this city is a sensuous fusion of faded European

The Small Cruise Ship Collection

www.small-cruise-ships.com

01432 507 280 (within UK)

info@small-cruise-ships.com | small-cruise-ships.com



The Small Cruise Ship Collection

www.small-cruise-ships.com

small-cruise-ships.com

info@small-cruise-ships.com

splendour and Latin American panache.

There are plenty of places to explore, including many parrillas serving authentic Argentine steak. Or maybe you'd like to practise your dance moves in the famous hometown of the tango.

[Day 3 Early start in Ushuaia](#)

Setting off at the bottom of the world

Your adventure begins with an early morning flight to Ushuaia, where you'll meet our hybrid-powered expedition ship, specially designed for sustainable cruising in polar waters.

This bustling port is the capital of Argentina's Tierra del Fuego Province. Set against the magnificent backdrop of the Martial Glacier, Ushuaia vies for the title of the world's southernmost city.

After a briefing from your Expedition Team, you'll have time to locate your cabin and explore the comforts and amenities on board.

[Day 4-5 Get set for Antarctica](#)

Cross the Drake Passage

On the two-day crossing through the Drake Passage, the

Expedition Team will equip you with all you need to make the most of your polar expedition.

Visit the onboard Science Center and find out what lies ahead. Listen to experts talk passionately about Antarctica's history, the science beneath the ice, and the impact of climate change and plastic pollution. You'll learn how to make your visit as safe and as low-impact as possible, and about the Citizen Science projects you can join.

There's plenty of time to relax, so unwind in the spa and wellness area, enjoy some delicious cuisine and meet fellow travellers in the Explorer Lounge & Bar.

[Day 6-10 Antarctica: another world](#)

Experience Antarctica in all its natural majesty

Nothing prepares you for your first sight of Antarctica's immense, frozen beauty. Surrounded by looming glaciers, and icebergs the size of floating cathedrals, Antarctica will fill you with wonder. Perhaps the most surprising part of Antarctica is the silence. It's a stillness that's broken every so often by the locals - the wildlife.

Whales begin to arrive in greater numbers by December and January. This is also when the first penguin chicks hatch and seeing the clumsy clumps of feathers run around is always a charming sight. February and March offer peak whale-watching opportunities, when large amounts of krill lure them to the area.

The Small Cruise Ship Collection
www.small-cruise-ships.com

01432 507 280 (within UK)

info@small-cruise-ships.com | small-cruise-ships.com



The Small Cruise Ship Collection

www.small-cruise-ships.com

small-cruise-ships.com

info@small-cruise-ships.com

Day 13 Ushuaia and Buenos Aires

Here, nature is king, and we are mere observers. Our experienced Captain will continually monitor conditions to create the best possible itinerary for your adventure. Rest assured, each day will offer something different and thrilling.

You'll join the Expedition Team on landings and ice-cruises, and may even get a chance to go kayaking among the icebergs.

Back on board, the Expedition Team will continue their lectures, helping you grow in your insights of the frozen continent. Over five magical days, you'll experience this amazing world in a way that will stay with you for a lifetime.

Day 11-12 Returning to warmer waters

Heading back north across the Drake Passage

After five incredible days, you'll have experienced so much in Antarctica. Your head will likely be filled with a swirling kaleidoscope of special memories and impressions. The next couple of days will be a chance to reflect on your adventure to the seventh continent.

As your mind tries to conjure up the magical Antarctic scenery, now could be a good time to sift through your photos and videos to recapture a sense of its magnitude. Why not take the chance to unwind in the sauna, or enjoy a few relaxing spa treatments in the wellness area.

From Ushuaia to Buenos Aires

Your expedition cruise ends in Ushuaia, the main city in Tierra del Fuego, Argentina's southernmost province. After arriving in Buenos Aires, you'll have an overnight to explore the city further.

Day 14-15 Buenos Aires to Australia

From Buenos Aires to Australia

You'll be transferred to the airport in Buenos Aires and take your flight back to Australia.

But it doesn't have to be the end of your adventure. Why not join our optional Post-Programme before heading home.

Please note:

Itineraries are subject to change.

The Small Cruise Ship Collection

www.small-cruise-ships.com

01432 507 280 (within UK)

info@small-cruise-ships.com | small-cruise-ships.com

The Small Cruise Ship Collection

www.small-cruise-ships.com

small-cruise-ships.com

info@small-cruise-ships.com

YOUR SHIP: FRIDTJOF NANSEN

YOUR SHIP: Fridtjof Nansen

VESSEL TYPE:

LENGTH:

PASSENGER CAPACITY:

BUILT/REFURBISHED:

Fridtjof Nansen is a small cruise ship specifically designed to be one of the most sustainable ships that can visit the Polar regions. Launched in 2020, The state of the art vessel features new and environmentally sustainable hybrid technology that will reduce fuel consumption and show the world that hybrid propulsion on large ships is possible. MS Fridtjof Nansen is the second of two hybrid ships to be launched cutting emissions by sailing with electrical propulsion. Hybrid technology, combined with the advanced construction of the hull and effective use of electricity on board will reduce fuel consumption and CO2-emissions on the ships by 20 percent. The future of shipping will be silent and emission free. MS Fridtjof Nansen will lead the way towards an even more sustainable way of traveling. Sailing on electrical power is not only a great benefit for the environment, but it will also enhance the impact of experiencing nature for the guests. The ship will be specially constructed for voyages in polar waters and serve as a comfortable basecamp at sea - bringing adventurers from all over the world to the most spectacular destinations in the most sustainable way. These ships combine state-of-the-art technology together with a premium onboard experience. All cabins are outside, half have

private balconies, and aft suites even boast private outdoor Jacuzzis, to soak up the stunning scenery in style. Facilities on board One of the most eye-catching exterior design features of the ships will be the two-level indoor/outdoor Observation Deck wrapped around the top of the ships' raked bow. In a vast area behind it, you'll find the core of the onboard experience: Amundsen Science Center. Packed with state of the art technology and high tech gadgets such as touch screens and science equipment, the immersive edutainment area will be the place guests and staff/crew meet, mingle and create a deeper understanding for the areas they explore. The flexible venue will feature lecture spaces, a small library, and speciality areas for workshops in photography, biology, and more. The stunning scenery will be reflected in a rich and comfortable interior design. Scandinavian materials from nature, such as granite, oak, birch and wool will be used to create relaxed and stylish cabins and public areas. All cabins are outside, 50 % will have private balconies, aft suites will feature private outdoor Jacuzzis with



The Small Cruise Ship Collection
www.small-cruise-ships.com

01432 507 280 (within UK)

info@small-cruise-ships.com | small-cruise-ships.com



The Small Cruise Ship Collection

www.small-cruise-ships.com



small-cruise-ships.com

info@small-cruise-ships.com

spectacular views.



01432 507 280 (within UK)

info@small-cruise-ships.com | small-cruise-ships.com



The Small Cruise Ship Collection

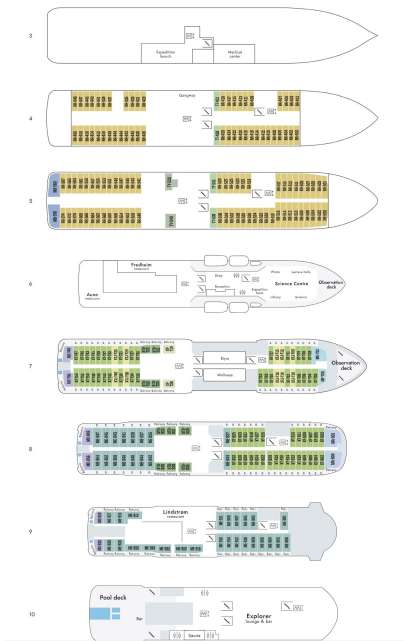
www.small-cruise-ships.com



small-cruise-ships.com

info@small-cruise-ships.com

INSIDE YOUR SHIP



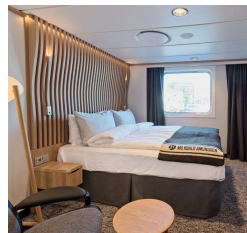
Arctic Superior. From



Expedition Suite. From



Polar Outside. From



The Small Cruise Ship Collection

www.small-cruise-ships.com

01432 507 280 (within UK)

info@small-cruise-ships.com | small-cruise-ships.com

The Small Cruise Ship Collection

www.small-cruise-ships.com

small-cruise-ships.com

info@small-cruise-ships.com

PRICING

24-Feb-2025 to 10-Mar-2025

Expedition Suite. From £13395 GBP pp

Arctic Superior. From £10769 GBP pp

24-Feb-2025 to 10-Mar-2025

Expedition Suite. From £14189 GBP pp

Arctic Superior. From £11355 GBP pp

Polar Outside. From £10575 GBP pp

06-Mar-2025 to 20-Mar-2025

Arctic Superior. From £10545 GBP pp

Polar Outside. From £9845 GBP pp

Expedition Suite. From £12895 GBP pp

09-Mar-2025 to 23-Mar-2025

Expedition Suite. From £11965 GBP pp

Polar Outside. From £8719 GBP pp

Arctic Superior. From £10375 GBP pp

29-Oct-2025 to 12-Nov-2025

Arctic Superior. From £9625 GBP pp

Polar Outside. From £8945 GBP pp

Expedition Suite. From £12089 GBP pp

08-Nov-2025 to 22-Nov-2025

Arctic Superior. From £10435 GBP pp

Polar Outside. From £9735 GBP pp

Expedition Suite. From £12979 GBP pp

18-Nov-2025 to 02-Dec-2025

Expedition Suite. From £13269 GBP pp

Arctic Superior. From £10649 GBP pp

Polar Outside. From £9929 GBP pp

27-Nov-2025 to 11-Dec-2025

Expedition Suite. From £13269 GBP pp

Polar Outside. From £9929 GBP pp

Arctic Superior. From £10649 GBP pp

28-Nov-2025 to 12-Dec-2025

Arctic Superior. From £10649 GBP pp

Polar Outside. From £9929 GBP pp

Expedition Suite. From £13269 GBP pp

08-Dec-2025 to 22-Dec-2025

Polar Outside. From £11155 GBP pp

Expedition Suite. From £13969 GBP pp

Arctic Superior. From £11935 GBP pp

18-Dec-2025 to 01-Jan-2026

Arctic Superior. From £11885 GBP pp

Polar Outside. From £11115 GBP pp

Expedition Suite. From £14699 GBP pp

21-Dec-2025 to 04-Jan-2026

Arctic Superior. From £11905 GBP pp

Expedition Suite. From £14715 GBP pp

Polar Outside. From £11505 GBP pp



The Small Cruise Ship Collection

www.small-cruise-ships.com

small-cruise-ships.com

info@small-cruise-ships.com

PRICING

28-Dec-2025 to 11-Jan-2026

Expedition Suite. From	£15135 GBP pp
Arctic Superior. From	£12209 GBP pp
Polar Outside. From	£11405 GBP pp

07-Jan-2026 to 21-Jan-2026

Expedition Suite. From	£14699 GBP pp
Arctic Superior. From	£13189 GBP pp
Polar Outside. From	£11489 GBP pp

17-Jan-2026 to 31-Jan-2026

Arctic Superior. From	£12639 GBP pp
Expedition Suite. From	£15135 GBP pp
Polar Outside. From	£11795 GBP pp

27-Jan-2026 to 10-Feb-2026

Arctic Superior. From	£12209 GBP pp
Polar Outside. From	£11405 GBP pp
Expedition Suite. From	£15135 GBP pp

06-Feb-2026 to 20-Feb-2026

Arctic Superior. From	£11505 GBP pp
Polar Outside. From	£10705 GBP pp
Expedition Suite. From	£14435 GBP pp

16-Feb-2026 to 02-Mar-2026

Expedition Suite. From	£13999 GBP pp
Arctic Superior. From	£12019 GBP pp
Polar Outside. From	£11165 GBP pp

26-Feb-2026 to 12-Mar-2026

Arctic Superior. From	£10865 GBP pp
Polar Outside. From	£10125 GBP pp
Expedition Suite. From	£13559 GBP pp

05-Mar-2026 to 19-Mar-2026

Expedition Suite. From	£12979 GBP pp
Polar Outside. From	£9735 GBP pp
Arctic Superior. From	£10435 GBP pp

08-Mar-2026 to 22-Mar-2026

Arctic Superior. From	£9879 GBP pp
Polar Outside. From	£9205 GBP pp
Expedition Suite. From	£12345 GBP pp

15-Mar-2026 to 29-Mar-2026

Expedition Suite. From	£12345 GBP pp
Polar Outside. From	£9205 GBP pp
Arctic Superior. From	£9879 GBP pp