



ICELAND IN DEPTH - 9 DAY CIRCUMNAVIGATION VOYAGE

Experience the wild and fantastic landscapes of Iceland - the land of fire and ice - on our boutique ship. Circumnavigate the geologically active island, accompanied by breaching whales, to see the puffin capital of the world. Along the way, we will discover the phenomena of fjords, spectacular waterfalls and neverending volcanic scenery. Discover Iceland's oldest houses and meet locals who are proud of their traditional heritage such as fishing or eiderdown making. Book our Iceland Circumnavigation cruise so you can hike to thundering waterfalls, duck under the spray of spouting hot geysers, spot Atlantic puffins and trek across remote locations where only arctic fox live.



ITINERARY

DAY 1 PRE CRUISE

DAY 2 REYKJAVIK

Despite its small size, you won't be short of things to see and do in this diminutive but dramatic city. To get your bearings, take the elevator to the top of Hallgrímskirkja. This church, designed by famed Icelandic architect Guðjón Samuelsson is one of the most distinctive buildings in town. When you return to earth, visit the city's other renowned building Harpa Concert Hall, located at the heart of Reykjavík's regenerated harbour – also the home of the Maritime Museum. Speaking of cultural spaces, tour the National Museum to learn the story of Iceland from past to present. The Reykjavík Art Museum houses an impressive contemporary collection including eye-catching pieces by Erró. And, of course, just 50 kilometres outside the city lies Thingvellir National Park, the site of Iceland's original Viking parliament.



DAY 3 DYNJANDI WATERFALL

Considered one of Iceland's most impressive, this thunderous waterfall in the Westfjords region gives the impression of a bridal veil as it spreads its tumbling waters down a series of ever-growing cascades. Dynjandi is one of the most photographed sights in Iceland. Walking up to it takes 15 minutes passing five smaller waterfalls. Nearby, Hrafnseyri is the birthplace of Jón Sigurdsson, 19th-century leader of the Icelandic Independence movement. The museum includes an Icelandic turf house.

DAY 4 ISAFJÖRDUR & VIGUR ISLAND

Surrounded by fjords in the Westfjords region, Ísafjörður is a bustling fishing town in northwest Iceland with colourful wooden 18th- and 19th-century houses in the old town of Neskaupstaður. Ísafjörður was one of the largest fisheries in Iceland, but tourism has now taken over. Nearby is Sudavík, home to the Arctic Fox Centre. Iceland's only mammal, the arctic fox lives on the lush tundra of Hornstrandir Nature Reserve - the northernmost peninsula in the Westfjords with two of Europe's largest bird cliffs. Island of Vigur is a real pearl of the Western Fjords. The second-largest island in the fjord, measuring two kilometres by 400 metres, it's a significant seabird colony, which is home to arctic terns, puffins, black guillemots and eider ducks. As one of only two inhabited islands in the fjord, Vigur is also the site of a single farm, which has been in the same family for generations. During your time on the island, you might see Iceland's only windmill, the country's smallest post office and oldest boat, which was built more than 200 years ago and in regular use until relatively recently.

DAY 5 GRIMSEY ISLAND & AKUREYRI

Grimsey is a remote island located 40km off Iceland's north coast. Many people travel here for the purpose of setting foot in

the Arctic Circle, the only place in Iceland where you can do so. The island is also home to fewer than 100 people, but over one million seabirds. Birdlife thrives here thanks to the lack of egg predation (there are no rats or mice on the island) and the rich, well-stocked surrounding seas. Grímsey has one of Iceland's largest tern nesting sites and largest puffin colonies.

DAY 6 AKUREYRI

Home to some 18,000 residents, Akureyri stands proud as the Land of Fire and Ice's 'Capital of the North'. It's the gateway to some natural wonders including the Myvatn region, Dettifoss waterfall, Godafoss waterfall and Asbyrgi canyon. But before you rush off, take some time to explore: Iceland's winsome second city is colourful, cosy and utterly enchanting - even the red traffic lights are cute. Instagrammers will adore heart-shaped stop signs. Enjoy the quaint harbourfront; climb the steps to the towering Akureyri Church; stroll around Lystigardurinn, the city's Arctic botanical garden; visit the Laufás Turf Houses; get in the festive spirit early at the Christmas House (Jolahúsid); admire the exhibits at the Akureyri Art Museum or the Hof cultural centre; or take a dip in the outdoor, geothermal swimming pool.

DAY 7 SEYDISFJÖRDUR

Regarded as east Iceland's cultural hub, brightly painted wooden houses line Seyðisfjörður's port. With a lively arts scene disproportionate to its small size, Seyðisfjörður has attracted many writers and artists over the years and also hosts an annual summer arts festival. Surrounded by incredible nature, the Skálanes nature reserve is a short distance from the town. The area covered by the reserve is known for its diverse wildlife with over 47 species of bird and over 150 plant species. Reindeer are also seen here, with seals and porpoises frequently spotted along the shores.



The Small Cruise Ship Collection

www.small-cruise-ships.com

small-cruise-ships.com

info@small-cruise-ships.com

DAY 8 DJUPIVOGUR

Home to fewer than 500 residents, the quiet fishing village of Djupivogur dates back to the Viking era. Despite its formidable origins, the village is better known these days for its unhurried pace of life. Djupivogur's most famous artistic offering may be the first thing you notice as you disembark. The 34 large granite eggs that line the road along the bay are not easy to miss. The art installation, named 'The Eggs at Merry Bay' (Eggin í Gleðivík in Icelandic) represents the 34 species of birds that nest locally. Immerse yourself further into the wild on a trip to nearby Vatnajökull National Park. Covering 14% of Iceland's land mass, this vast area is home to giant ice caps, thundering glacial rivers, grumbling active volcanoes and a host of other geological wonders. Take a guided tour out onto Vatnajökull Glacier, Europe's largest ice cap, and experience the glory of true Icelandic wilderness for yourself.

DAY 9 HEIMAÆY

A small 13-kilometre square island off the south coast of Iceland, Heimaey's history has been surprisingly eventful. From the escapee 16th century Irish slaves to the reaches of the Ottoman Empire and subsequent pirate invasion, the island was a place of danger and terror until the mid 18th century. Once these events subsided, for 300 years the people of Heimaey assumed that their days of action were a thing of the past. That was until 1973 when residents awoke to a devastating volcanic eruption. Fissures over a kilometre wide snaked through the town, the lava engulfing over 400 homes. Remarkably, only one person is thought to have died as a result of the eruption, with a quick rescue response ensuring that the 5,300 residents were swiftly evacuated to the safety of the mainland. Evidence of this recent geological activity can be seen just about everywhere on Heimaey and is the focus of the fascinating Eldheimar museum.

DAY 10 REYKJAVÍK

Your cruise ends in Reykjavík. Make sure there is sufficient time before you begin your journey home to explore this diminutive but dramatic capital city. Despite its small size, you won't be short of things to see and do. To get your bearings, take the elevator to the top of Hallgrímskirkja. This church, designed by famed Icelandic architect Guðjón Samuelsson is one of the most distinctive buildings in town. When you return to earth, visit the city's other renowned building Harpa Concert Hall, located at the heart of Reykjavík's regenerated harbour – also the home of the Maritime Museum. Speaking of cultural spaces, tour the National Museum to learn the story of Iceland from past to present. The Reykjavík Art Museum houses an impressive contemporary collection including eye-catching pieces by Erró. And, of course, just 50 kilometres outside the city lies Thingvellir National Park, the site of Iceland's original Viking parliament.

Please Note:

Itinerary changes and surprising experiences are part of expedition cruise life. The world has a habit of amazing us with incredible things when we yield to the unexpected. Join us with an open mind and a sense of adventure and you'll find that this can pay off in the most rewarding ways.



YOUR SHIP: DIANA

YOUR SHIP: Diana

VESSEL TYPE:

LENGTH:

PASSENGER CAPACITY:

BUILT/REFURBISHED:

Launched in 2023, SH Diana provides elegant and spacious 5-star accommodation for 192 guests in 96 spacious staterooms and suites, the vast majority with large balconies. Operated by an onboard team of 140 she provides a high level of personal service, exploring the Mediterranean and its famous sites of antiquity. Now sit back, relax and take a moment to get to know this amazing new ship, purpose-designed for our unique cultural expedition cruises. Named after the Ancient Roman goddess of light, the moon, hunting and the wilderness, SH Diana has been specially designed for worldwide cruising to explore the most inspiring and inaccessible places on earth. Building on the outstanding amenities of her sister ships, she adds a dedicated Multifunctional Room next to the Observation Lounge, a Private Dining Room for special occasions, and two tenders which bring guests a comfortable alternative to Zodiacs for expedition landings. A Polar Class 6 ice-strengthened hull combines with extra-large stabilisers to make your journey as comfortable as possible. SH Diana has been designed for immersive experiences, with extensive outside deck areas, multiple observation points and bright, open and relaxing public spaces with unobstructed views. The pleasure and safety of our

guests is paramount at all times, cared for by our attentive crew and seasoned expedition leaders. Cutting edge hygiene technology protects the health of all on board to the highest standards and includes air conditioning with UV sanitisation systems. SH Diana's 96 staterooms, including 11 suites, are each a superbly comfortable home from home and all feature panoramic sea views, a flame-effect fireplace, original works of art, plush couches, premium pocket sprung mattresses, en-suite bathrooms with glass-enclosed rain showers, and Egyptian cotton towels, bathrobes and sheets. A pillow menu offers customised head and neck comfort during rest, while a large flat screen TV, espresso machine with Illy premium coffee, tea making facilities with the finest Kusmi teas, and a minibar with refreshments enhance relaxation at any time. In-room dining is of course available at all hours. Wheelchair access Guests who use wheelchairs must bring their own, as we have only a small number of wheelchairs stored onboard for emergencies. To ensure ease of movement on the ship, wheelchairs and mobility aids must be no wider than 65cm. All mobility or medical equipment brought on board must be capable of being carried safely and must be declared before sailing. To ensure that all guests can safely evacuate during an emergency, guests requiring a wheelchair can only be accommodated in our ADA-accessible cabins. We offer an Oceanview and a Balcony stateroom on Diana. These staterooms are specifically designed to be completely ADA compliant and have a fully operable wheelchair-access wet unit. Diana has two lifts, serving every passenger deck apart from the Stargazing top deck, which is, therefore, more difficult to access, as are the Aft Marina and



Swan's Nest forward observation platform. Also, we don't have special equipment to access the swimming pool, jacuzzi, or sauna. Otherwise, the ship is entirely at your disposal. Many of the expeditions ashore in remote places are by Zodiac. Boarding these boats and returning aboard can present challenges for wheelchair users, as can navigating uneven terrain. These challenges are by no means always insurmountable, though, and our highly experienced crew is trained to provide reliable advice and assistance. They will make every effort to ensure wheelchair-using guests enjoy a memorable experience at each destination. Our general guidance, however, is to recommend wheelchair users travel with a companion for their ease and enjoyment. If you prefer to remain aboard, our panoramic interiors and ample open decks ensure an immersive, intimate experience of your inspiring



surroundings.



The Small Cruise Ship Collection

www.small-cruise-ships.com

small-cruise-ships.com

info@small-cruise-ships.com

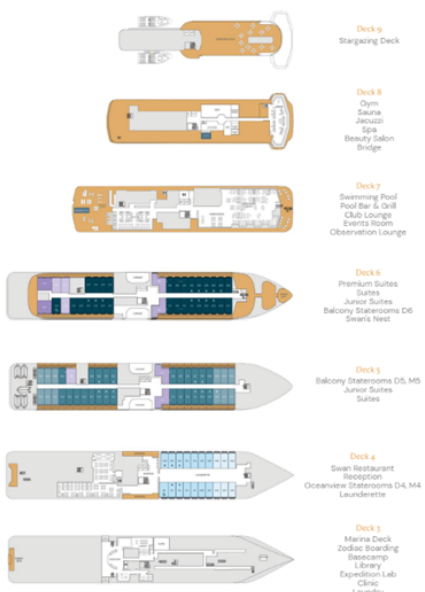
INSIDE YOUR SHIP

Stateroom Category:

- Oceanview D4: 6 (8m²)
- Oceanview M4: 14 (18m²)
- Balcony D5: 12 (18m²)
- Balcony M5: 25 (18m²)
- Balcony D6: 29 (18m²)
- Junior Suite: 4 (24m²)
- Suite: 4 (30m²)
- Premium Suite: 2 (30m²)

Ship Specification:

- Guest Capacity: 209
- Crew: 91
- No. of Decks: 8
- Staterooms: 98
- Length: 400.7m (1314.9m)
- Breadth: 39.9m (130.9m)
- Gross Tonnage: 12,205
- Service Speed: 12.5 knots
- 1st Guest Capacity: 110
- Connecting Staterooms: 5, 419, 635
- Wheelchair Accessible: 11
- Staterooms: 98
- Propulsion: Hybrid Diesel
- Electric: Polar Class PC6
- Permanents: 2 (fully closed)
- Lifboats: 14 (MCS)
- Tenders: 2



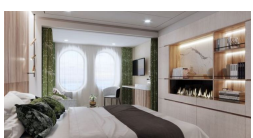
Balcony D5



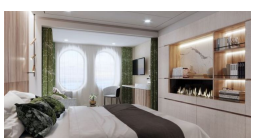
Balcony M5



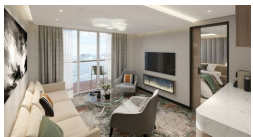
Oceanview D4



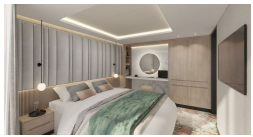
Oceanview M4



Premium Suite



Suite





The Small Cruise
Ship Collection

www.small-cruise-ships.com

small-cruise-ships.com

info@small-cruise-ships.com

PRICING

30-Jul-2025 to 08-Aug-2025

Premium Suite	£12942 GBP pp
Oceanview M4	£6822 GBP pp
Balcony M5	£8802 GBP pp
Suite	£11772 GBP pp
Oceanview D4	£6462 GBP pp
Balcony D5	£8442 GBP pp



The Small Cruise
Ship Collection

www.small-cruise-ships.com

01432 507 280 (within UK)

info@small-cruise-ships.com | small-cruise-ships.com