

# The Small Cruise Ship Collection

www.small-cruise-ships.com



small-cruise-ships.com

info@small-cruise-ships.com

## IN THE HEART OF THE NORTHWEST PASSAGE LUXURY EXPEDITION

With PONANT, set off to discover Baffin Bay all the way to the mythical Northwest Passage during a 20-day expedition cruise aboard Le Boreal. Leaving from Kangerlussuaq, explore the heart of this historic maritime route and set off for an unforgettable stay among the Arctic's most beautiful landscapes. First of all, you will explore the western coast of Greenland which will welcome you with its majestic icebergs in Disko Bay, a UNESCO World Heritage Site, and its colourful villages encircled by mountains and basalt formations. This is the ideal opportunity for meeting the local population and learning about Greenland Inuit culture. Then set sail for the Nunavut province in Northern Canada, to approach the entrance of the Northwest Passage. Amundsen was the first to pave the way on this northern route between the Atlantic and the Pacific Oceans, which long remained just a theory for navigators and scientists. On Beechey Island, retrace the steps of the Franklin expedition, before marvelling at the sublime canyon at Fury Beach. Throughout your trip, you will enter grandiose fjords and sail at the edge of the ice floes, in the hope of glimpsing the polar bear, the lord of the Far North. After Bellot Strait, the narrow passage of Coningham Bay will provide the perfect spot for an encounter with majestic belugas. In Arctic Bay, you will meet the inhabitants of an Inuit village and will be able to build unique relationships. The exploration of nature and wildlife and, above all, the polar history linked to this mythical route are the common theme of this journey, which will let you experience magic and unforgettable moments. The raw beauty of the Arctic offers an unforgettable backdrop, while the team of on-board naturalists sharpens your adventurer's soul. With a keen eye,

you will scan the coastlines, fjords and glaciers in search of traces of life - a colony of walrus, a polar bear, beluga, northern fulmar, guillemot, Arctic tern, black-legged kittiwake... - and comprehend the historic places that bear witness to this



iconic passage.

### ITINERARY

Day 1 Kangerlussuaq

From 1941 to 1992, the town of Kangerlussuaq in Greenland was home to an American military base. Nowadays, thanks to its international airport, it has become a transit point for travellers



## The Small Cruise Ship Collection

[www.small-cruise-ships.com](http://www.small-cruise-ships.com)

[small-cruise-ships.com](http://small-cruise-ships.com)

[info@small-cruise-ships.com](mailto:info@small-cruise-ships.com)

seeking adventure in the Far North. Located to the north of the Arctic Circle, this town is the starting point of magnificent discoveries surrounded by unspoiled nature. Indeed, just a few dozen kilometres from there it is possible to get close to the Greenland ice sheet, the largest body of ice in the Northern Hemisphere. From Kangerlussuaq, admire also the superb landscapes of tundra in autumnal colours, where Arctic hares, musk oxen, Arctic foxes, reindeer, falcons and eagles live.

### Day 2 Kitsissuarsuit (Dog's Island)

The Dutch were the first to come and hunt whales on this island they called "isle of dogs" \- Kitissuarsuit in Greenlandic. Indeed, when they arrived there in the summertime, the inhabitants had left the island, leaving behind their dogs, and moved to the neighbouring fjords for a season of fishing. Kitissuarsuit is considered to be the larder of the small town of Aasiaat, which is further away from the fishing areas, and the villagers still live self-sufficiently thanks to the marine resources, while trying to keep their age-old traditions alive.

### Day 3 Disko Bay

To the east of Baffin Bay, discover Disko Bay, scattered with countless icebergs produced by the Ilulissat Icefjord, a UNESCO World Heritage Site. From your ship, admire the majestic ballet of these ice giants as they slowly drift across the dark waters. This site is a natural marvel of Greenland, and is also renowned as an observation point for the region's many humpback whales. The encounters with wild fauna and stunning landscapes in the heart of this spectacular and fragile nature

will be pure moments of wonder for you.

### Days 4 - 5 At sea

During your journey at sea, make the most of the many services and activities on board. Treat yourself to a moment of relaxation in the spa or stay in shape in the fitness centre. Depending on the season, let yourself be tempted by the swimming pool or a spot of sunbathing. This journey without a port of call will also be an opportunity to enjoy the conferences or shows proposed on board, depending on the activities offered, or to do some shopping in the boutique or to meet the PONANT photographers in their dedicated space. As for lovers of the open sea, they will be able to visit the ship's upper deck to admire the spectacle of the waves and perhaps be lucky enough to observe marine species. A truly enchanted interlude, combining comfort, rest and entertainment.

### Day 6 Pond Inlet, Nunavut

On Baffin Island, located in northern Canada at the mouth of the famous NorthWest Passage, there is a small Inuit settlement at the very bounds of infinity. To get there, cross the Arctic Circle, the imaginary line that separates man from lands of mystery and wonder. It's not so much the way of life that sets Pond Inlet's inhabitants apart, so much as the setting. Snow-capped mountains, fjords and glaciers combine in a dazzling natural environment that fills space and expands time. Some discoveries change you forever: this is one of them.

### Day 7 Queen Harbour, Nunavut

The Small Cruise Ship Collection

[www.small-cruise-ships.com](http://www.small-cruise-ships.com)

01432 507 280 (within UK)

[info@small-cruise-ships.com](mailto:info@small-cruise-ships.com) | [small-cruise-ships.com](http://small-cruise-ships.com)





## The Small Cruise Ship Collection

[www.small-cruise-ships.com](http://www.small-cruise-ships.com)

[small-cruise-ships.com](http://small-cruise-ships.com)

[info@small-cruise-ships.com](mailto:info@small-cruise-ships.com)

### Day 8 Dundas Harbour, Nunavut & Croker Bay, Nunavut

On the southern coast of Devon Island, Dundas Harbour, a Royal Canadian Mounted Police post in the early 20th century, keeps watch over the entrance to the Northwest Passage. This site has been frequented for centuries by the Inuit, who call it Talluruti - or "woman's chin with tattoos on it" in Inuktitut - in reference to the lines of the landscape which are reminiscent of their traditional tattoos. Its hills, covered in taiga reflecting greens, browns and golds, are edged by the deep navy waters of a bay dotted with white and turquoise ice floe glistening in the sunlight.

### Day 9 Port Leopold, Nunavut

The Canadian Arctic Circle is home to one of the planet's best preserved natural sanctuaries: Somerset Island. This immaculate northern desert is renowned for its phenomenal landscapes, its midnight sun and its huge tundra, where musk oxen roam. Covering 24,786 square kilometres (15,400 square miles), it is the Arctic archipelago's ninth-largest island. Vegetation is rare except in some hollows and lowlands, where Peary caribou are common.

### Day 10 Fort Ross, Nunavut & Bellot Strait

Discover Fort Ross, the last trading post established by the Hudson's Bay Company. Constructed in 1937, it was used as a fur and whaling trading post at the same time. Fort Ross, located on a small island at the entrance to the Bellot Strait, is

still home to this former store as well as the house for the manager and staff. The interior of these two buildings has been damaged over time and by the presence of polar bears. After a short walk towards the summits of the island, you will be able to enjoy a breathtaking panoramic view over the Bellot Strait and surrounding area.

A key stage in the North West Passage, the Bellot Strait, crossed by strong currents, promises you an unforgettable sailing experience. The entrance to the strait is dominated by the Ross Cairn. The buildings of Fort Ross also stand not far from here. Separating Somerset Island from the Boothia Peninsula, this 2-km-wide strait was discovered in 1852 by Captain William Kennedy of the Royal Navy, and the Frenchman Joseph-Rene Bellot, during an expedition in search of Sir John Franklin. Discover a magnificent decor covered in snow, fragmented by large ice floes. As you sail between them, your ship will perhaps be accompanied by a few polar bears.

### Day 11 Coningham Bay, Nunavut

At the heart of the legendary Northwest Passage, discover the sheltered Coningham Bay in the south-east of Prince of Wales Island, during an exceptional sailing. The surrounding waters, rich in nutrients brought in by the tides and currents, are home to cetaceans including beluga whales. The polar bear, lord of the Arctic, has also established its realm on this hunting ground where food tends to be abundant. When conditions are favourable, extraordinary encounters with the wildlife are possible in these isolated lands.

### Day 12 Prescott Island, Nunavut

The Small Cruise Ship Collection  
[www.small-cruise-ships.com](http://www.small-cruise-ships.com)

01432 507 280 (within UK)

[info@small-cruise-ships.com](mailto:info@small-cruise-ships.com) | [small-cruise-ships.com](http://small-cruise-ships.com)



## The Small Cruise Ship Collection

[www.small-cruise-ships.com](http://www.small-cruise-ships.com)

[small-cruise-ships.com](http://small-cruise-ships.com)

[info@small-cruise-ships.com](mailto:info@small-cruise-ships.com)

Prescott Island is located between Somerset Island and Prince of Wales Island, in the heart of Peel Sound, and its shorelines provide a perfect playground for belugas. However, the opportunity to observe and listen to these "sea canaries" is not the only reason to scan the horizon: here, between the icebergs and the dramatic landscapes, you may also be able to spot polar bears, as well as summon up memories of Sir John Franklin, who was the first to cross Peel Sound in 1846 during his expedition in search of the Northwest Passage, followed in 1903 by Roald Amundsen, who was the first to find a route through that passage!

Day 13 Beechey Island, Nunavut & Devon Island, Nunavut

Beechey Island, at the eastern end of Resolute Bay, will call to mind some of the most important moments of Franklin's expedition. Sir John set off in 1845 in search of the mythical Northwest Passage and was forced to take shelter in Erebus Harbour for two long years, while he waited for the ice floes to recede and allow him a way through. It is a spectacular location; seeing the three wooden grave markers, bleached by the sun (indicating the burial places of at least three of Captain Franklin's men) and visiting the memorial that has been erected in memory of Franklin and his men can only reinforce the hushed sense of reverence. If the surrounding wilderness impresses us, the ochre and yellows of the rocky desert soften the landscape.

Located in Baffin Bay, Devon Island is part of the Canadian

Arctic Archipelago. Anchored on the Arctic Cordillera, its rocky surface, similar to that of Mars, is of great interest to scientists. Robert Bylot and William Baffin were the first Europeans to sight Devon Island in 1616 but it would be mapped two centuries later by the British sailor William E. Parry, who named it after the eponymous English region. Around 1920, the Hudson's Bay Company set up a fur-trading outpost there, until the departure of the Inuits in 1936. A new attempt to populate it was made at the beginning of the 1950s. Only a few buildings in ruins, vestiges of that time, remain today.

Day 14 Arctic Bay, Nunavut

Arctic Harbor is on the small island of Aulitiving, barely 15 km long and 5 km wide, at the entrance to Isabella Bay. A major whale hunting site, this small natural harbour still has remnants from those times, notably some whaler graves. This port of call will be the opportunity to go for a lovely hike in the heart of the Arctic tundra, and perhaps to reach the highest point of the island, located at an altitude of 410 metres.

Day 15 At sea

During your journey at sea, make the most of the many services and activities on board. Treat yourself to a moment of relaxation in the spa or stay in shape in the fitness centre. Depending on the season, let yourself be tempted by the swimming pool or a spot of sunbathing. This journey without a port of call will also be an opportunity to enjoy the conferences or shows proposed on board, depending on the activities offered, or to do some shopping in the boutique or to meet the PONANT photographers

The Small Cruise Ship Collection

[www.small-cruise-ships.com](http://www.small-cruise-ships.com)

01432 507 280 (within UK)

[info@small-cruise-ships.com](mailto:info@small-cruise-ships.com) | [small-cruise-ships.com](http://small-cruise-ships.com)





## The Small Cruise Ship Collection

[www.small-cruise-ships.com](http://www.small-cruise-ships.com)

[small-cruise-ships.com](http://small-cruise-ships.com)

[info@small-cruise-ships.com](mailto:info@small-cruise-ships.com)

in their dedicated space. As for lovers of the open sea, they will be able to visit the ship's upper deck to admire the spectacle of the waves and perhaps be lucky enough to observe marine species. A truly enchanted interlude, combining comfort, rest and entertainment.

### Day 16 North Arm fjord, Nunavut

The ship makes its way deeper into the fjord, leaving you free to admire the spectacular geological formations that plunge abruptly into the emerald-green waters of Baffin Bay. When the temperature rises and the ice begins to melt, Nunavut becomes one of the best places in the world to observe the wildlife of the Arctic. Be on the lookout for polar bears, which hide away amongst the scree to seek out the freshness of the permafrost. On the water's surface, you could get the chance to glimpse the tusk of a narwhal, or perhaps the silhouette of an orca or a bowhead whale. And in the sky, it is not uncommon to see a colony of arctic fulmars with their impressive wingspan gliding near the ship.

### Day 17 Icy Arm Fjord

The east coast of Baffin Island is a real lacework of fjords. Among them, in the north, is the spectacular Icy Arm fjord. As you sail these parts, you'll be dazzled by the immense cliffs that are sometimes over 1,000 metres high. This is a paradise for base jumping (parachute jumping from the top of the cliffs). During your stop here, you will have the opportunity to hike at the feet of these mountains and within the glacial valleys. Keep your eyes open when you get back on your boat: you'll probably

get the chance to observe marine mammals, such as whales, orcas and even narwhals.

### Day 18 At sea

During your journey at sea, make the most of the many services and activities on board. Treat yourself to a moment of relaxation in the spa or stay in shape in the fitness centre. Depending on the season, let yourself be tempted by the swimming pool or a spot of sunbathing. This journey without a port of call will also be an opportunity to enjoy the conferences or shows proposed on board, depending on the activities offered, or to do some shopping in the boutique or to meet the PONANT photographers in their dedicated space. As for lovers of the open sea, they will be able to visit the ship's upper deck to admire the spectacle of the waves and perhaps be lucky enough to observe marine species. A truly enchanted interlude, combining comfort, rest and entertainment.

### Day 19 Sisimiut

During your cruise, we invite you to discover Sisimiut, founded in 1756 and the second largest town in Greenland. This small town is typical of Greenland, boasting bewitching panoramas: here and there, colourful stilt houses dot the undulating landscape, and the small fishing port stands as the gateway to an icy realm. As for the town centre, it is home to a number of historic buildings, a small church and a museum which retraces the history of the Inuit people, as well as many craft shops. When your ship drops anchor here, you will set out to meet the locals in a typically arctic atmosphere.

The Small Cruise Ship Collection

[www.small-cruise-ships.com](http://www.small-cruise-ships.com)

01432 507 280 (within UK)

[info@small-cruise-ships.com](mailto:info@small-cruise-ships.com) | [small-cruise-ships.com](http://small-cruise-ships.com)



Day 20 Kangerlussuaq

From 1941 to 1992, the town of Kangerlussuaq in Greenland was home to an American military base. Nowadays, thanks to its international airport, it has become a transit point for travellers seeking adventure in the Far North. Located to the north of the Arctic Circle, this town is the starting point of magnificent discoveries surrounded by unspoiled nature. Indeed, just a few dozen kilometres from there it is possible to get close to the Greenland ice sheet, the largest body of ice in the Northern Hemisphere. From Kangerlussuaq, admire also the superb landscapes of tundra in autumnal colours, where Arctic hares, musk oxen, Arctic foxes, reindeer, falcons and eagles live.

Please note:

Itineraries are subject to change.



## The Small Cruise Ship Collection

[www.small-cruise-ships.com](http://www.small-cruise-ships.com)

[small-cruise-ships.com](http://small-cruise-ships.com)

[info@small-cruise-ships.com](mailto:info@small-cruise-ships.com)

## YOUR SHIP: L'AUSTRAL

<b>YOUR SHIP:</b>	<b>L'Austral</b>
<b>VESSEL TYPE:</b>	<b>142 metres. Passenger Capacity: 264 (200 in Antarctica). Built: 2011</b>
<b>LENGTH:</b>	<b>2011</b>
<b>PASSENGER CAPACITY:</b>	
<b>BUILT/REFURBISHED:</b>	

Luxury Expedition / Cruise Ship This superb mega-yacht with 132 cabins is the result of the expertise of the Italian Fincantieri shipyard and French sophistication, as interpreted by designer Jean-Philippe Nuel. L'Austral has a unique atmosphere, a subtle blend of luxury, intimacy and well-being. A sleek silhouette softened by elegantly smooth contours and large, arched windows opening up to the sea and the light: so many features come together to give L'Austral her distinctive shape. Precious materials, discreet elegance and a perfect balance between chic and casual, combine to make you feel as if you are on your own private yacht. A design blending tradition and innovation, where a nautical mood has been subtly recreated. Precious materials in soothing neutral tones are brought to life with splashes of cheerful reds. So many personal touches create the spirit of a "private yacht". Suites and staterooms You can expect magnificent ocean views as 124 staterooms and suites have balconies. Individually-controlled airconditioning · Cabin layout: kingsize bed, or twin beds, communicating cabins available (children welcome) · Minibar · Flat screen satellite TV · iPod™

players · Desk with stationery · Electronic safe · French bath products · Dressing table and hairdryer · Bath robes · Satellite direct line telephone · 110/220 volts · 24hr room service · WiFi · Balcony Cuisine Loyal to the great French tradition, the haute cuisine on board is worthy of the finest restaurants, where discreet, attentive service is the hallmark. Choose from two restaurants for breakfasts, lunch and dinner. The Gastronomic Restaurant is situated on Le Liberte Deck and serves you French and international cuisine accompanied by fine wine. On the Grill Restaurant, you have the opportunity to eat outside and enjoy buffet lunch and themed dinner. Life On Board Whether you want to join other guests in the theatre or games area (Wii™ consoles, etc), or relax on your own in a quiet corner of the library, L'Austral has been designed to meet the needs of every guest. Everything has been done to preserve the independence of each guest to suit their personal tastes: lounges for lectures and shows, a spa in partnership with Sothys™, but also more intimate spaces such as the library and internet corner. Comfortable cabins, nearly all with private balcony, are available for families either as triples or as communicating cabins. There is also a games area with Wii™ consoles, children's menus, and a baby-sitting service. Just as if you were on a private yacht, your time is your own to do as you please. Fitted with the latest equipment (Kinesis Wall, running machine) and in partnership with the famous Sothys™ brand, the Beauty Centre on L'Austral welcomes you for some unforgettable moments of relaxation and pampering (beauty treatments, hairdresser). Wheelchairs 3 specially adapted wheelchair cabins (Deck 3 = Superior cabin no. 307, no balcony, Deck 4 = Prestige Cabin no. 407 - with

The Small Cruise Ship Collection  
[www.small-cruise-ships.com](http://www.small-cruise-ships.com)

01432 507 280 (within UK)

[info@small-cruise-ships.com](mailto:info@small-cruise-ships.com) | [small-cruise-ships.com](http://small-cruise-ships.com)





# The Small Cruise Ship Collection

[www.small-cruise-ships.com](http://www.small-cruise-ships.com)

[small-cruise-ships.com](http://small-cruise-ships.com)

[info@small-cruise-ships.com](mailto:info@small-cruise-ships.com)

balcony and Deck 5 = Prestige Cabin no 509, with balcony) and lifts to all decks/areas. Details Please click the following links to read more about Ponant and the other Ponant



cruise ships.



The Small Cruise Ship Collection

[www.small-cruise-ships.com](http://www.small-cruise-ships.com)

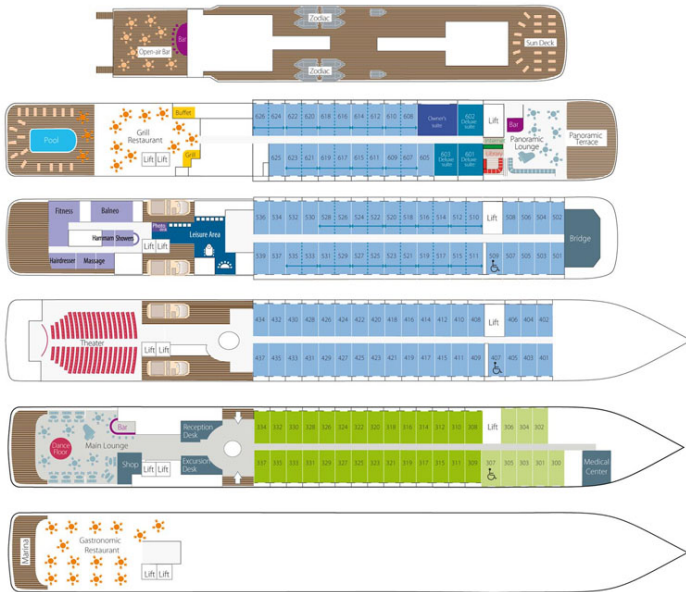
**01432 507 280** (within UK)

[info@small-cruise-ships.com](mailto:info@small-cruise-ships.com) | [small-cruise-ships.com](http://small-cruise-ships.com)





# INSIDE YOUR SHIP



DeLuxe Stateroom

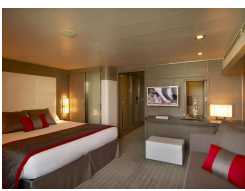


Deluxe Stateroom



Deluxe Suite

Owner's Suite



Owner's suite

Prestige Stateroom - Deck 4

Prestige Stateroom - Deck 5

Prestige Stateroom - Deck 6

Prestige Stateroom Deck 4

Prestige Stateroom Deck 5

Prestige Stateroom Deck 6

Prestige Suite - Deck 5

Prestige Suite - Deck 6

Prestige Suite Deck 5

Prestige Suite Deck 6

Superior Stateroom



# The Small Cruise Ship Collection

[www.small-cruise-ships.com](http://www.small-cruise-ships.com)



[small-cruise-ships.com](http://small-cruise-ships.com)

[info@small-cruise-ships.com](mailto:info@small-cruise-ships.com)

## PRICING

### 25-Aug-2025 to 13-Sep-2025

Prestige Stateroom - Deck 6	£25306 GBP pp
Prestige Stateroom - Deck 5	£23995 GBP pp
Owner's suite	£56625 GBP pp
Deluxe Suite	£34945 GBP pp
Superior Stateroom	£19181 GBP pp
Prestige Suite - Deck 5	£46991 GBP pp
Prestige Suite - Deck 6	£49398 GBP pp
Prestige Stateroom - Deck 4	£22899 GBP pp
DeLuxe Stateroom	£20706 GBP pp

### 31-Aug-2026 to 19-Sep-2026

Prestige Suite Deck 5	£39795 GBP pp
Prestige Suite Deck 6	£41835 GBP pp
Owner's Suite	£47935 GBP pp
Deluxe Stateroom	£17615 GBP pp
Superior Stateroom	£16325 GBP pp
Prestige Stateroom Deck 6	£21505 GBP pp
Prestige Stateroom Deck 5	£20395 GBP pp
Prestige Stateroom Deck 4	£19465 GBP pp
Deluxe Suite	£29635 GBP pp

### ADDITIONAL CHARGES:

Port Taxes 1410 AUD pp



The Small Cruise Ship Collection

[www.small-cruise-ships.com](http://www.small-cruise-ships.com)

01432 507 280 (within UK)

[info@small-cruise-ships.com](mailto:info@small-cruise-ships.com) | [small-cruise-ships.com](http://small-cruise-ships.com)