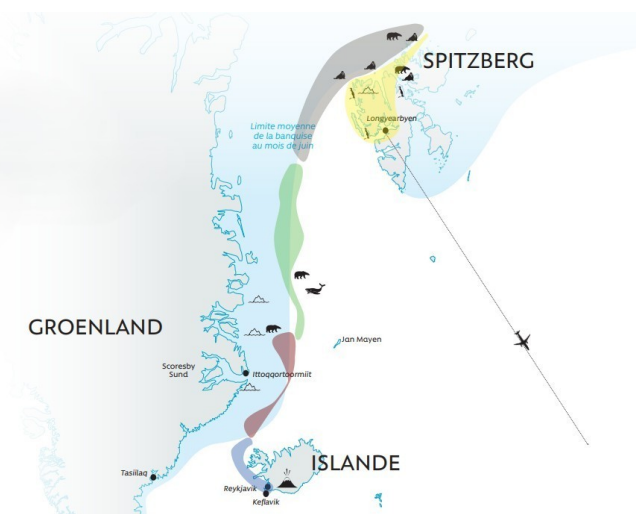




IN THE ICE FLOES OF GREENLAND AND SPITSBERGEN EXPEDITION

In the Ice Floes of Greenland and Spitsbergen: The Kingdom of Polar Bears The ice floe spans over 8 million square kilometers of the Arctic Ocean, forming one of the most extraordinary landscapes on the planet, where the polar bear reigns supreme. For the first time, we will embark on a 10-day journey aboard our polar ship, the Ocean Nova. This exclusive expedition, lasting a total of 15 days, is reserved for just 70 passengers. While the polar bear and the sea ice are our primary objectives, we will also encounter walrus, whales, ivory gulls, seal colonies, and the stunning northern landscapes of Spitsbergen. Accompanied by a team of onboard experts and the polar expertise of the ship's officers, this journey promises an unforgettable Arctic experience.



ITINERARY

Day 1: Boarding in Keflavik (Iceland)

Flights from Europe typically arrive around 16:00 local time at Keflavik International Airport in Iceland. The Ocean Nova will be waiting at the dock of this fishing town for immediate departure. We'll sail across Reykjavik's large bay to Akranes/Alftanes, tragically known for the sinking of the "Pourquoi Pas?" commanded by Charcot in 1936. We'll also see the Snaefells volcano, made famous as the starting point of Jules Verne's Journey to the Center of the Earth.

Day 2: At Sea - Denmark Strait Ice Floes



While crossing the Denmark Strait, we'll stay on deck searching for large whales and orcas. By the end of the day, we'll encounter our first patches of drifting ice floes.

Days 3 to 6: Northeast Greenland Ice Shelf

We'll explore the region of multi-year ice floes drifting in the Fram Strait, where massive Greenland icebergs and an abundance of wildlife—including seal colonies, whales, and polar bears—can be seen.

Days 7 to 9: Barents Sea Ice Shelf - North of Spitsbergen

Between Greenland and Spitsbergen, the permanent red-marked ice floe forms an impassable barrier. We'll navigate its edges, where ocean life thrives, for two unforgettable days.

Days 10 to 14: Spitsbergen/Svalbard

Depending on the ice conditions, we'll approach the coast to visit the Sept-Îles archipelago (the northernmost point), the Monaco Glacier named after Prince Albert I, the Smeerenburg fjord known for its whaling and trapping history, and Madeleine Bay, an iconic spot in the archipelago.

Further south, we'll encounter seabird colonies, polar foxes, grazing reindeer, bearded seals, and possibly white whales along the coast, ending our journey at Isfjord.

Day 15: Longyearbyen to Oslo

Disembarkation is scheduled around 9:00 AM in Longyearbyen, the capital of Spitsbergen. If time permits, we'll enjoy a city tour before transferring to the airport for a private flight to Tromsø and Oslo, arriving around 19:00.

Please note:

Itineraries are subject to change.



YOUR SHIP: OCEAN NOVA

YOUR SHIP: Ocean Nova

VESSEL TYPE:

LENGTH:

PASSENGER CAPACITY:

BUILT/REFURBISHED:

The ice-strengthened 73 metre long expedition ship Ocean Nova was built in Denmark in 1992 with high ice class to serve Greenland's west coast. In 2004 to 2005 she was completely refurbished and has now a career as a small and comfortable expedition ship. The Ocean Nova accommodates 86 passengers in single, double and triple cabins, all with sea-view and private facilities. The double cabins have either twin beds. The triple cabins have upper and lower beds. In your cabin you will also find a desk with chair and ample storage space for clothes and equipment. In the dining room you are treated to delicious meals in between landings and in the panorama lounge you can enjoy a drink with a breathtaking view of the surrounding polar landscape. This is where on board specialists entertain and educate you with lectures on polar biology, history, geology and conservation. There is also a library with panoramic views and a good selection of polar books. On board there is a satellite phone, gym and medical doctor. Passengers are welcome on the bridge around the clock and there is always something to see or search for from the spacious observation decks. The ship has North European officers and there is a friendly and informal atmosphere on board. Travelling with this small expedition ship

offers an entirely different experience and perspective than you can get on a larger and more conventional cruise ship. Cabins are spread over two decks and include cabins for the single traveller, double and triple cabins, all with sea-view and private facilities. The comfortable dining room located on the Upper deck seats all passengers in a single sitting and offers delicious meals with a mixture of table service and buffet. The informal dining arrangement adds to the friendly atmosphere onboard and meals are a great chance to discuss all you have seen with your fellow travellers, and for the expedition team to share their knowledge. With one of the highest ice classes (1B) and a 2000 hp diesel engine, Ocean Nova is a small but sturdy expedition vessel just as at home in the icy waters of Svalbard as she is in a tranquil Scottish loch. The ship has a crew of 34, including North European officers, whose prime concern is your safety as well as ensuring wildlife sightings and weather conditions are maximised. For your safety there are two fully enclosed lifeboats and a medical



The Small Cruise Ship Collection

www.small-cruise-ships.com

small-cruise-ships.com info@small-cruise-ships.com

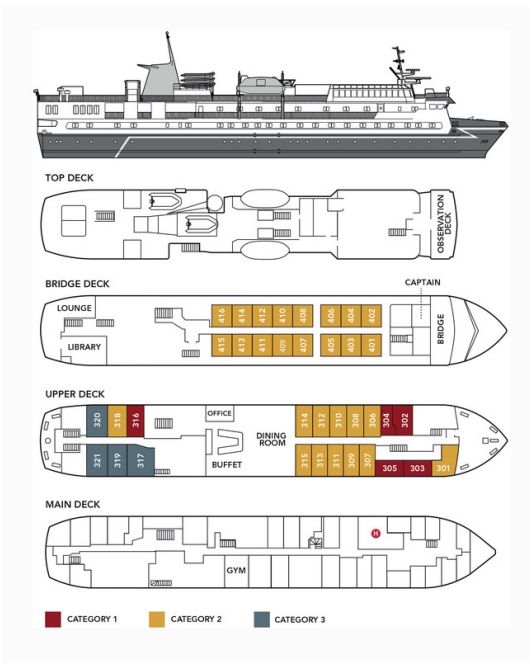


clinic onboard.

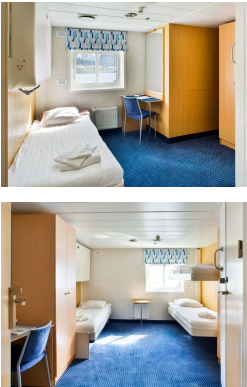


small-cruise-ships.com info@small-cruise-ships.com

INSIDE YOUR SHIP



Single cabin Triple cabin





The Small Cruise
Ship Collection

www.small-cruise-ships.com

small-cruise-ships.com

info@small-cruise-ships.com

PRICING

04-Jun-2025 to 18-Jun-2025

Triple cabin	£5729 GBP pp
Double Cabin – Bunk Beds	£6225 GBP pp
Double Cabin – Low Beds	£6475 GBP pp
Double Cabin – Double bed	£6559 GBP pp
Superior Cabin – Low Beds	£7389 GBP pp
Premium Cabin	£10375 GBP pp
Single cabin	£11539 GBP pp



The Small Cruise
Ship Collection

www.small-cruise-ships.com

01432 507 280 (within UK)

info@small-cruise-ships.com | small-cruise-ships.com