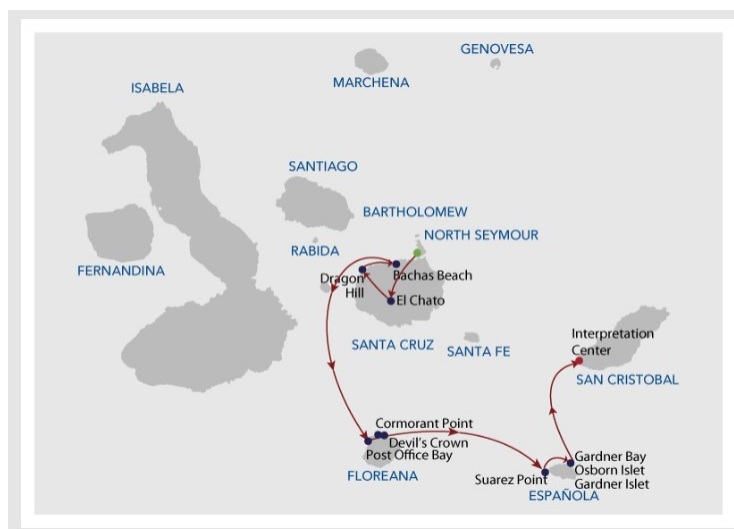




INFINITY GALAPAGOS 5 DAY CRUISE

This is an itinerary for a multi-day trip to the Galapagos Islands. The journey starts at Baltra Island Airport, where participants will be transferred to a boat. The first day is spent exploring El Chato on Santa Cruz Island. On the second day, they visit Dragon Hill in the morning and Bachas Beach in the afternoon, both located on Santa Cruz Island. The third day's activities include exploring Post Office Bay in the morning and either Cormorant Point or Devil's Crown in the afternoon, both situated on Floreana Island. The fourth day is dedicated to visiting Suarez Point in the morning and Gardner Islet / Osborn Islet / Gardner Bay in the afternoon on Española Island. The trip concludes on the fifth day with a visit to the Gianni Arismendy Interpretation Center on San Cristobal Island before transferring to San Cristobal Airport. Throughout the journey, participants will have the opportunity to witness the unique wildlife and natural beauty of the Galapagos Islands.



ITINERARY

Day 1: Friday SANTA CRUZ ISLAND

In the morning: Baltra Airport Arrival Morning flight from Quito or Guayaquil to Baltra, Galapagos Islands. You will arrive at Baltra Island in the morning. After passing through immigration and baggage claim, you will be met by a Infinity staff member and transferred to the yacht. You will be shown to your cabin where you will have some time to settle in before lunch and a welcome briefing. In the afternoon: El Chato El Chato reserve is divided into two areas: Caseta and Chato. The trail begins at Santa Rosa (13.7 miles / 22 km) from Puerto Ayora, with the Caseta route being the most challenging. The reserve allows visitors to observe giant tortoises in the wild during the dry season and is also a good place to spot short-eared owls, Darwin's finches, yellow warblers, Galapagos rails and paint-billed crakes.



The Small Cruise Ship Collection

www.small-cruise-ships.com



small-cruise-ships.com

info@small-cruise-ships.com

Day 2: Saturday SANTA CRUZ ISLAND

In the morning: Dragon Hill The visitors' site at Dragon Hill is located in northwestern Santa Cruz Island and consists of a 1,600 m long trail that runs through three different environments. The beach is very rocky. At high tide it's a nice place for snorkeling. At this visiting site you can find vegetation of the typical intertidal zone and dry zone. In the afternoon: Bachas Beach Bachas Beach is located on the north shore of Santa Cruz and is a beach for swimming. One of the few remnants of the U.S. World War II presence in the Galapagos, a floating pier, can be seen here. You may see flamingos, Sally Lightfoot crabs, hermit crabs, black-necked stilts, and whimbrels. Sea turtles also nest on the beach.

Day 3: Sunday FLOREANA ISLAND

In the morning: Post Office Bay You will land on a beach and head to a spot where 18th century whalers placed a wooden barrel used as an unofficial mail box. The custom continues to this day with Galapagos visitors. So, don't forget your postcards, and don't be surprised if the post card arrives to its destination before you even get home! In the afternoon: Cormorant Point Cormorant Point hosts a large flamingo lagoon where other birds such as common stilts and white-cheeked pintails can also be seen. The beaches on this island are distinct: The Green Beach is named so due to its green color, which comes from a high percentage of olivine crystals in the sand, and the Four Sand Beach is composed of white coral.

Day 4: Monday ESPAÑOLA ISLAND

In the morning: Suarez Point On the trail to Suarez Point you will have the chance to spot blue-footed boobies, albatrosses, and Nazca boobies. This island is the breeding site of nearly all of the world's 12,000 pairs of waved albatrosses. You will also visit

a beautiful site on the ocean front where there is a cliff that the large albatrosses use as a launching pad! You will have the chance to see the famous blowhole that spurts sea water into the air. The landscape is great for photography. In the afternoon: Gardner Bay, Gardner Islet & Osborn Islet This excursion takes you to the spectacular Gardner Bay. After landing, you can walk across a lovely white-sand beach amongst a busy sea lion colony or dive into the water to swim with sea lion pups. You may also see curious mockingbirds on the beach.

Day 5: Tuesday SAN CRISTOBAL ISLAND

In the morning: Gianni Arismendy Interpretation Center This site is part of an environment project. The tour of this center will explore the natural history of the islands including human interaction and conservation efforts. The Museum of Natural History explains the volcanic origin of the archipelago, ocean currents, climate, and the arrival of endemic species. The Human History exhibit chronologically describes significant events such as discovery and colonization of the islands. Afterwards: San Cristobal airport departure After this final visit, you will be transferred to the San Cristobal airport in time for your flight back to the mainland.

Please Note:

Itineraries are subject to change.



The Small Cruise Ship Collection

www.small-cruise-ships.com

01432 507 280 (within UK)

info@small-cruise-ships.com | small-cruise-ships.com



The Small Cruise
Ship Collection

www.small-cruise-ships.com



small-cruise-ships.com

info@small-cruise-ships.com

YOUR SHIP: INFINITY

YOUR SHIP: Infinity

VESSEL TYPE:

LENGTH:

PASSENGER CAPACITY:

BUILT/REFURBISHED:

The MV INFINITY (launched in 2015) is a 49m (161 ft) long, 8.8 m (28 ft) wide luxury vessel, with a cruising speed of nine knots, Infinity has the latest state-of-the-art equipment and amenities. Infinity carries a maximum of just 38 passengers in 19 twin or double cabins, guaranteeing an intimate setting for all guests. Cabins The modern cabins are fully equipped with air condition, safe deposit box, fire alarm, emergency lights and audio system for announcements by the captain or Tour Director. In addition each cabin has life jackets, desk and chair, wardrobe, night stand, small sofa and a porthole window. Bathrooms are equipped with toilet, shower, wash basin and hair dryer. All cabins have indoor passage access to the bar and restaurant area (except two main deck cabins that are connected to restaurant via deck). Cabin sizes \- Upper Deck VIP cabin, Twin/Double beds, size 15.7m2with balcony- Main DeckStandard cabin,Twin/Double beds, size 17m2 with window-Lower Deck cabin, Standard Twin/Double beds, size 16/17m2 Porthole Social Areas The spacious fully air-conditioned main deck dining room offers privacy for each guest including bar area with LCD TV, a corner buffet breakfast table and lounge area on the rear of the upper deck. The lounge

sundeck has a total surface of 250 m2 (820 sq ft) with partial sun-shade cover of 70 m2 (230 sq ft) and comfortable deck-beds for all passengers all with easy access to the Jacuzzi tub. The vessel has a rear platform to the sea with ladders for easy access into the water and offers two outdoor showers and two deck lavatories. VIP



cabin balcony

The Small Cruise
Ship Collection

www.small-cruise-ships.com

01432 507 280 (within UK)

info@small-cruise-ships.com | small-cruise-ships.com



The Small Cruise Ship Collection

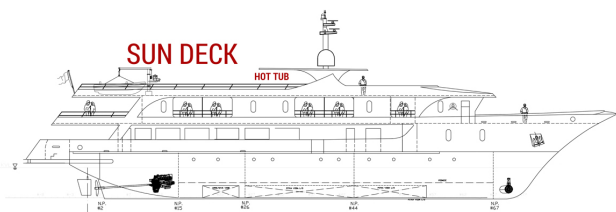
www.small-cruise-ships.com



small-cruise-ships.com

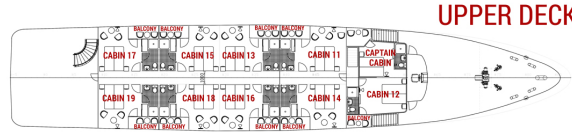
info@small-cruise-ships.com

INSIDE YOUR SHIP

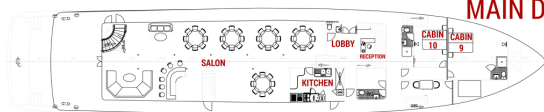


SUN DECK

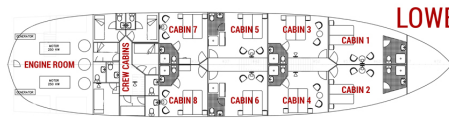
HOT TUB



UPPER DECK

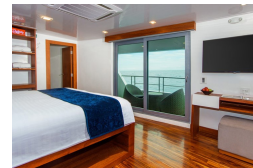


MAIN DECK



LOWER DECK

Cabin





The Small Cruise Ship Collection

www.small-cruise-ships.com



small-cruise-ships.com

info@small-cruise-ships.com

PRICING

17-Jan-2025 to 21-Jan-2025

Cabin £4500 GBP pp

14-Feb-2025 to 18-Feb-2025

Cabin £4500 GBP pp

28-Feb-2025 to 04-Mar-2025

Cabin £4500 GBP pp

14-Mar-2025 to 18-Mar-2025

Cabin £4500 GBP pp

28-Mar-2025 to 01-Apr-2025

Cabin £4500 GBP pp

25-Apr-2025 to 29-Apr-2025

Cabin £4500 GBP pp

09-May-2025 to 13-May-2025

Cabin £4500 GBP pp

23-May-2025 to 27-May-2025

Cabin £4500 GBP pp

06-Jun-2025 to 10-Jun-2025

Cabin £4500 GBP pp

20-Jun-2025 to 24-Jun-2025

Cabin £4500 GBP pp

18-Jul-2025 to 22-Jul-2025

Cabin £4500 GBP pp

01-Aug-2025 to 05-Aug-2025

Cabin £4500 GBP pp

15-Aug-2025 to 19-Aug-2025

Cabin £4500 GBP pp



www.small-cruise-ships.com

01432 507 280 (within UK)

info@small-cruise-ships.com | small-cruise-ships.com