



## ISLAND CHARM & ANCIENT TREASURES - GREEK ISLES & TURKIYE SAILING FROM ATHENS TO ISTANBUL

Set sail on a mesmerizing journey through Greece and Turkey, beginning in Athens before venturing to the elegant car-free island of Spetses. Discover the rich history of Nauplio and the ancient fortress city of Mycenae. Explore the Cyclades' Milos, the Dodecanese's Patmos with its significant monastery, and the bustling port of Kusadasi, near the renowned ruins of Ephesus. Enjoy a relaxing day at sea before arriving in Istanbul, where you'll be immersed in the vibrant culture of Turkey's modern metropolis. This itinerary offers a blend of historic landmarks, serene islands, and dynamic city experiences.

# The Small Cruise Ship Collection

www.small-cruise-ships.com

small-cruise-ships.com

info@small-cruise-ships.com



## ITINERARY

Day 1 Athens (Piraeus), Greece

Departure 7:00 pm

"A ship will come...", declared the singer Melina Mercouri to the port of Piraeus. Later, as Greek Minister for Culture, she made Athens the first European Capital of Culture in 1985. The city is considered the birthplace of Europe, of philosophy and of democracy, and is the embodiment of the Olympic ideal. World-famous and a UNESCO World Heritage Site since 1987, its landmark is the magnificent Parthenon temple, lying high up

on the Acropolis in all its glory. At the foot of the Acropolis hill is the Plaka, the oldest quarter of Athens, and the world's most modern archaeological museum, the new Acropolis Museum, has been here since 2009.

Day 2 Spetses, Saronic Islands

Arrival 2:00 pm, Departure 11:00 pm

Exclusive, noble, traditional: Far away from mass tourism, a small, relaxed island with beautiful patrician houses basks in the turquoise waters of the Aegean Sea. Wealthy Athenians like to spend their vacation days on Spetses - and this evident on the well-kept Saronic Island. Lush flower gardens adorn the historic shipping villas, chic cafes line the old harbor, and horse-drawn carriages roll by with aristocratic elegance on the car-free streets. On Spetses, it's worth taking a look down: Here, colorful pebble mosaics adorn the streets, and many a visitor gets a kick out of finding the prettiest one.

Day 3 Nauplio, Peloponnese

Arrival 8:00 am, Departure 7:00 pm

The old town of Nauplio has a picturesque peninsula setting and three Venetian fortresses guard the pretty town. In ancient times, the excavation site of Mycenae, a UNESCO World Heritage Site, was one of the most important towns in Greece. Its legendary king, Agamemnon, has a large role in Homer's Iliad. The palace grounds were surrounded by a cyclopean stone wall. Now you can only gain entrance through the famous Lion





## The Small Cruise Ship Collection

[www.small-cruise-ships.com](http://www.small-cruise-ships.com)

[small-cruise-ships.com](http://small-cruise-ships.com)

[info@small-cruise-ships.com](mailto:info@small-cruise-ships.com)

Gate. In Epidauros, also protected by UNESCO, the impressive 14,000-seat theatre is one of the most important buildings in this archaeological site.

### Day 4 Milos, Cyclades

Arrival 8:00 am, Departure 1:30 pm

The unique character of Milos' landscape was formed by volcanic activity. Hot springs, spectacular cliffs and distinctive rock formations give the various beaches their own individual character. The colors of Milos are most obvious where the water meets the stone and forms the coastline. Minerals have colored the sand and stones and each rock along the coastline seems to glow in a different color. Plaka, the picturesque old capital with its typical dazzling-white houses, is overlooked by a mighty castle which offers a superb view over Adamos Bay and the surrounding islands.

### Day 5 Patmos, Dodecanese

Arrival 8:00 am, Departure 1:30 pm

The idyllic little island of Patmos houses one of the most important monasteries of the Greek Orthodox church. The monastery of St John is a World Heritage Site, protected by UNESCO. It was built in honour of the Apostle John, who is said to have lived in a cave on the island. It is also said that he wrote down his Revelation of the Apocalypse there. The whole island is considered holy ground and is one of the most important pilgrimage sites in the Greek Orthodox world.

### Day 6 Kusadasi, Turkey

Arrival 8:00 am, Departure 1:30 pm

Not far from Aegean's sizeable marina is the famous ancient port of Ephesus. One of the Seven Wonders of the World stood here, St Paul preached a new doctrine, and Heraclitus reordered his thoughts and understanding of the world - everything flows, panta rhei. Once it was one of the oldest and most important Greek cities in Asia Minor and a centre for trade between Mesopotamia and the Middle East. Today is one of the best preserved ruins of the ancient world. Only the memory remains of the legendary Temple of Artemis, the magnificent Library of Celsus has become world famous and the theater at the end of the marble road is still extremely lively to this day.

### Day 7 Day at sea

Spend the day sunbathing, enjoy the fresh wind breeze, and relax into the day!

### Day 8 Istanbul, Turkey

Arrival 8:00 am

Istanbul, formerly Constantinople, is situated on a peninsula surrounded on three sides by the Sea of Marmara, the shimmering Bosphorus and the Golden Horn. It is a UNESCO World Heritage Site. The Hagia Sophia mosque forms the



## The Small Cruise Ship Collection

[www.small-cruise-ships.com](http://www.small-cruise-ships.com)

[small-cruise-ships.com](http://small-cruise-ships.com)

[info@small-cruise-ships.com](mailto:info@small-cruise-ships.com)

pinnacle of this Byzantine display of splendour. The ostentatious Topkapi Palace was the seat of government for the Ottoman sultans from the 15th century. The Sultan Ahmet mosque with its six minarets, also called the Blue Mosque because of its 20,000 wonderful blue faience tiles, dates from the 17th century. A lively city, divided between east and west by the sea, Istanbul is the most easterly city in Europe and the most westerly city in Asia.

Please note:

Itineraries are subject to change.



# The Small Cruise Ship Collection

[www.small-cruise-ships.com](http://www.small-cruise-ships.com)

[small-cruise-ships.com](http://small-cruise-ships.com)

[info@small-cruise-ships.com](mailto:info@small-cruise-ships.com)

## YOUR SHIP: SEA CLOUD II

<b>YOUR SHIP:</b>	<b>Sea Cloud II</b>
<b>VESSEL TYPE:</b>	<b>Tall Ship (Sailing)</b>
<b>LENGTH:</b>	<b>105 metres</b>
<b>PASSENGER CAPACITY:</b>	<b>96</b>
<b>BUILT/REFURBISHED:</b>	<b>2001</b>

Launched in 2001, Sea Cloud II is a stunning vessel, built along traditional lines, but offering deluxe accommodation. She combines timeless elegance of sailing ships of the past with the highest safety standards and the luxurious comfort of modern cruise ships. Just like her legendary sister ship Sea Cloud, the 29,600 square feet of sails is set by hand which is a truly magical sight. Built to accommodate 96 passengers in five star luxury, she offers a range of beautifully appointed suites and cabins which are furnished with great style. All accommodations have outside views and the bathrooms, in light marble, are unusually spacious and extremely comfortable. The finest, carefully chosen fabrics, combined with leather, rattan and other materials, brass and gold, precious woods and marble together create an impressive ensemble. No expense has been spared to create a sympathetic ambience in both the accommodations and public areas and this is reflected throughout the vessel. Public areas include an elegant lounge, library, fitness centre, boutique, lido bar and hospital. The single sitting dining room is airy and modern and the quality of the cuisine and service will be to the highest of standards, as one would expect on a Sea Cloud cruise. Relax on the Lido deck and experience the natural

grandeur of travelling under sail, rekindling memories of a



bygone age.

The Small Cruise  
Ship Collection  
[www.small-cruise-ships.com](http://www.small-cruise-ships.com)

**01432 507 280** (within UK)

[info@small-cruise-ships.com](mailto:info@small-cruise-ships.com) | [small-cruise-ships.com](http://small-cruise-ships.com)

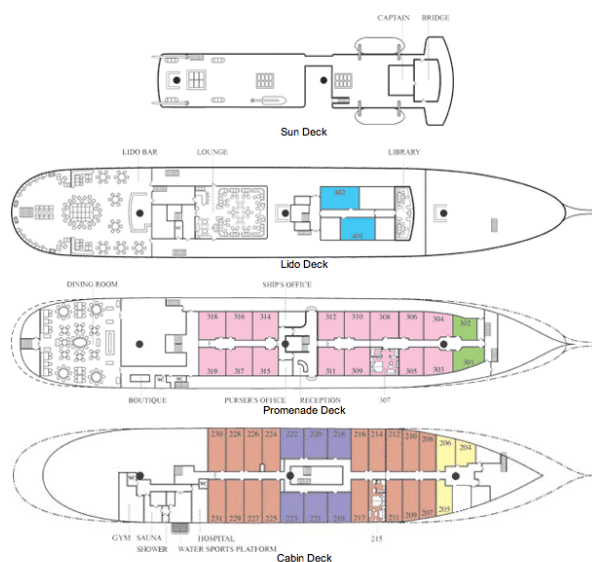
# The Small Cruise Ship Collection

www.small-cruise-ships.com

small-cruise-ships.com

info@small-cruise-ships.com

## INSIDE YOUR SHIP



Please note that category F cabins have one lower and one upper berth bed

Key  
 Cat A Cat B Cat C  
 Cat D Cat E Cat F

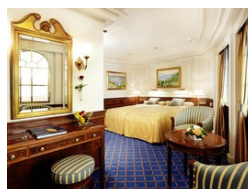
Category A. From



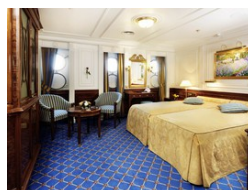
Category B. From



Category C. From



Category D. From



Category E. From

Category F Upper/Lower Beds. From

The Small Cruise Ship Collection  
 www.small-cruise-ships.com

01432 507 280 (within UK)

info@small-cruise-ships.com | small-cruise-ships.com





# The Small Cruise Ship Collection

[www.small-cruise-ships.com](http://www.small-cruise-ships.com)

[small-cruise-ships.com](http://small-cruise-ships.com)

[info@small-cruise-ships.com](mailto:info@small-cruise-ships.com)

## PRICING

### 01-Jul-2025 to 08-Jul-2025

GTU Double Cabin. From	£3615 GBP pp
Category F Upper/Lower Beds. From	£3938 GBP pp
Category E. From	£4553 GBP pp
Category D. From	£5059 GBP pp
Category C. From	£5349 GBP pp
Category B. From	£6304 GBP pp
Category A. From	£7009 GBP pp

### 01-Aug-2025 to 09-Aug-2025

GTU Double Cabin. From	£4113 GBP pp
Category F Upper/Lower Beds. From	£4478 GBP pp
Category E. From	£5200 GBP pp
Category D. From	£5773 GBP pp
Category C. From	£6113 GBP pp
Category B. From	£7192 GBP pp
Category A. From	£8014 GBP pp

### 03-Jul-2026 to 10-Jul-2026

Category F Upper/Lower Beds. From	£4095 GBP pp
Category E. From	£4725 GBP pp
Category D. From	£5515 GBP pp
Category C. From	£5669 GBP pp
Category B. From	£6305 GBP pp
Category A. From	£7249 GBP pp