



The Small Cruise
Ship Collection

www.small-cruise-ships.com

small-cruise-ships.com

info@small-cruise-ships.com

ISLANDS AND CITIES, FROM THE NORTH SEA TO THE BALTIC - NORWAY, SWEDEN, DENMARK, ESTONIA AND FINLAND CRUISE

Embark on an 8-night cruise aboard Le Laperouse to discover iconic islands and towns of Norway, Sweden, Denmark, Estonia and Finland. Throughout your journey, you will benefit from an excursion included per person per port of call, to choose from a selection offered by PONANT. On this cruise, you can stroll through the countryside and villages of Bornholm, attend an Estonian folk show in Tallinn and discover the Suomenlinna sea fortress in Helsinki. The diversity of experiences on offer promises you intense and varied moments (to discover the full range of excursions, go to the itinerary tab). The diversity of experiences on offer promises you intense and varied moments (to discover the full range of excursions, go to the itinerary tab). From Oslo, Norway's capital with its extraordinary energy, you head for Marstrand. In this medieval town, now highly popular for sailing trips, you can admire majestic, richly decorated wooden houses with verandas, colonnades and turrets. Le Laperouse then heads for the Danish capital, Copenhagen, before reaching Gudhjem, a charming village lying on the small Danish island of Bornholm, much admired by Danes for its varied landscapes of granite and long sandy beaches. You then dock at Christiansø, a small, unspoilt wild island. Le Laperouse will then sail to the Swedish island of Gotland and call at Visby, a site that was important for the Hanseatic League in the Baltic Sea around the 13th century. A UNESCO Heritage Site, this once-opulent city still has remarkably well-preserved ramparts, public buildings, merchant houses and warehouses. On Saaremaa, dive into the complex history of this island, Estonia's largest. First invaded by the Vikings, it became Danish then Swedish before being taken by the Russian Empire and later

The Small Cruise
Ship Collection

www.small-cruise-ships.com

01432 507 280 (within UK)

info@small-cruise-ships.com | small-cruise-ships.com

The Small Cruise Ship Collection

www.small-cruise-ships.com



small-cruise-ships.com

info@small-cruise-ships.com

occupied by the Germans. In 1991, it finally became Estonian when the country gained its independence. You will visit Tallinn, emblematic city of the Hanseatic League, the large trading network that dominated the Baltic Sea for several centuries. Listed as UNESCO Heritage Site, this once opulent city still have remarkably well-preserved public buildings, merchant houses and warehouses. You will then head to Helsinki. Located on a peninsula surrounded by almost 300 islands, the verdant capital of Finland will charm you with its Art Nouveau architecture. Finally, you will then chart a course for Stockholm. Built on water, the Swedish capital embraces nature, which is omnipresent there. Its blend of medieval architecture, colourful houses and trendy neighbourhoods makes it a particularly enjoyable

ITINERARY

Day 1 OSLO

Capital of Norway, Oslo, is a green city. Its many parks and gardens make it the reputedly pleasant city it is. The 80 hectares of Vigeland sculpture parks and its 212 open air exhibitions, the Munch Museum dedicated to the life and works of the Norwegian artist Edvard Munch, plus the Akershus fortress which symbolises Oslo's rich history, are both must-sees. For culture, the national gallery shelters the largest Norwegian collection of paintings, drawings and sculptures open to the public. And, for sports enthusiasts, the Holmenkollen district with its Ski museum and famous ski jump offer the most stunning, all-encompassing view of the city.



Day 2 MARSTRAND

Lying 40 kilometres north of Gothenburg on Sweden's west coast, Marstrand is a small island with indefinable charm, steeped in history. With its forests, coastal paths and beaches, the island can only be visited on foot or by boat, as there are no cars. A true haven of peace, Marstrand is an unspoilt place, where the colourful local houses and pleasure yachts exist peacefully side by side. The Carlsten fortress, a former state prison and the highest point on the island, has a magnificent view of the village, the harbour and the Gothenburg archipelago.

city to visit.

The Small Cruise Ship Collection

www.small-cruise-ships.com

01432 507 280 (within UK)

info@small-cruise-ships.com | small-cruise-ships.com



The Small Cruise Ship Collection

www.small-cruise-ships.com

small-cruise-ships.com

info@small-cruise-ships.com

Day 3 COPENHAGEN

Connected to the far eastern side of Sealand island, a few kilometres away from the Swedish coasts, Copenhagen offers you the high colour of Scandinavian capitals. You can discover the city's riches that weaves through the canal networks through the historical districts of Christiansborg and Nyhavn. Many palaces provide an aperçu of Danish history. For eating, you can try out the smørrebrød, traditional danish sandwiches made with ham, cheese or smoked fish.

Day 4 GUDHJEM, BORNHOLM & CHRISTIANSOE

Lying in the south-west of the Baltic Sea, the medieval village of Gudhjem, on the island of Bornholm, is one of the most visited and most popular villages in Denmark. As you stroll along its picturesque streets, you will fall under the spell of its varied landscapes, its easy way of life, and the authenticity of this charming town with half-timbered houses topped with red roofs, in the Danish tradition. It is here, along these charming streets, that the first herring smokehouses were built in the mid-19th century, attracting all the region's fishermen. Tucked away in a gorgeous natural setting composed of rocky cliffs, dense forests and beaches of white sand, Gudhjem will provide an unforgettable interlude where time will seem to stand still.

In the very heart of the Baltic Sea, in the Ertholmene archipelago, the small island of Christiansøe - less than 0,5 km² (barely 0,3 square miles) - awaits you. Thanks to its geographic form, which constitutes a natural harbour with the island of Frederiksø, it has been used as such for more than a thousand years. Pirates and fishermen succeeded one another here before the construction of its fortress, built between the 17th and 18th centuries, in the time of the Danish-Swedish wars. Visiting Christiansøe, you see the shaping of great history, the re-emergence of the rivalries and alliances that took place in the Baltic Sea. Today, this peaceful island offers you wild and preserved nature. A natural reserve since 1926, it is home in particular to a very large population of nesting and migrating birds that find food and tranquillity here.

Day 5 VISBY, GOTLAND

This old Hanseatic city lies to the west coast of Gotland, a Swedish island in the Baltic sea. Pass through the spectacular Visby fortifications and visit the old town, a UNESCO World Heritage site. You'll discover the grand Visby homes of rich merchants as well as the lovely low wooden houses in the little cobbled streets. Don't miss Saint Mary's cathedral with its octagonal steeples, as well as Powder tower along the fortifications. Make sure you stop over in one of the rose-adorned cafes; indeed roses abound in this town where you can taste one of the island's specialities, namely saffron pancakes with red fruit.

The Small Cruise Ship Collection

www.small-cruise-ships.com

01432 507 280 (within UK)

info@small-cruise-ships.com | small-cruise-ships.com



The Small Cruise Ship Collection

www.small-cruise-ships.com

small-cruise-ships.com

info@small-cruise-ships.com

Day 6 SAAREMAA

Welcome to Estonia's largest island, Saaremaa, with its age-old history and mysterious charm. Located in the Baltic Sea, it closes off the Gulf of Riga. The episcopal castle, a medieval fortress and preserved witness of the rich history of the Baltic States, stands proudly in the island's capital, Kuressaare. The island's soils and mild climate give it abundant and diverse nature, where forests, cliffs, dunes and beaches flourish, becoming a haven for thousands of migratory birds every year. The island offers many treasures, between wild nature, nature reserves, meteor craters and windmills.

Day 7 TALLINN

Opening onto the Baltic sea, to the far north of Estonia, the town of Tallin will win you over with the picturesque charm of its architecture. You can meander through its little streets in the heart of the medieval centre where its gothic town hall has been standing since 1404. The Kiek in de Kok tower, the Orthodox Alexander Nevski cathedral, or Toompea castle give visitors a taste of this town's rich past. The city was particularly active during the medieval period, as is demonstrated by the very beautiful monuments from this period that are still visible. Don't hesitate to lose yourself in the heart of Tallinn, listed as a UNESCO World Heritage Site.

Day 8 HELSINKI

Seated in the southern peninsula of Finland, Helsinki offers the buzz of a cosmopolitan city that has opted for both elegance and beauty. Explore its historical centre where the soft hues of neoclassical buildings are juxtaposed with spectacular modern constructions. The bustling Kallio district is teeming with boutiques and restaurants where you can taste some local specialities like graavilohi - a sweet, marinated, aromatic salmon dish. Keskuspuisto park, a stone's throw from the centre, is a good place to sit and unwind.

Days 9 - 10 STOCKHOLM

The capital of Sweden occupies an archipelago in the east of the country at the junction of Malar Lake and the Baltic sea. In Gamla stan, meaning "old town" in Swedish, you can stroll at your leisure in picturesque medieval streets until you reach the majestic Royal Palace. On the green island of Djurgarden, you can visit several very different kinds of cultural centres: the Vasa museum is dedicated to a 17th century three-mast, the ecomuseum of Skansen presents traditional customs, and the ABBA museum is dedicated to the legendary pop group. For a fantastic, all-encompassing view of Stockholm, you can take a ride in SkyView, a glass-encased sphere gondola that takes you to the top of the world's largest building, the Ericsson Globe, a Stockholm landmark.

The Small Cruise Ship Collection

www.small-cruise-ships.com

01432 507 280 (within UK)

info@small-cruise-ships.com | small-cruise-ships.com



The Small Cruise Ship Collection

www.small-cruise-ships.com



small-cruise-ships.com

info@small-cruise-ships.com

Please note:

Itineraries are subject to change.



The Small Cruise Ship Collection

www.small-cruise-ships.com

01432 507 280 (within UK)

info@small-cruise-ships.com | small-cruise-ships.com



The Small Cruise Ship Collection

www.small-cruise-ships.com



small-cruise-ships.com

info@small-cruise-ships.com

YOUR SHIP: LE CHAMPLAIN

YOUR SHIP: Le Champlain

VESSEL TYPE:

LENGTH:

PASSENGER CAPACITY:

BUILT/REFURBISHED:

Featuring innovative and environmentally-friendly equipment, elegantly designed cabins, spacious suites with large windows, and lounge areas that open onto the outside, this new limited-capacity yacht boasting just 92 cabins and suites will offer you a truly unique cruising experience. As the first ship in a new series, Le Champlain will embody the unique atmosphere that is the cruise line's hallmark: a subtle blend of refinement, intimacy and comfort. Aboard this ship that flies the French flag, you will experience the incomparable pleasure of an intimate cruise, with the possibility of exploring an ever-increasing range of destinations in an ethnic-chic ambiance with luxury service. Experience a luxurious setting where the accent is on authenticity and passion for travel. RESTAURANTS As it is an essential part of French culture, gastronomy will naturally have pride of place aboard this new ship. Through its two restaurants, Le Champlain will invite you on a journey to elegance and epicureanism. In a relaxed atmosphere, a first dining area located on Deck 3 and able to seat 70 will serve grilled meats daily, along with a variety of salads and desserts. To the back of Deck 4, you will find a 260 m² panoramic restaurant which can accommodate all of our passengers in a single sitting. Designed

differently to that on our other ships, this dining area, which opens onto the outside, will have a buffet of salads, desserts and cheeses at your disposal. Our discreet and attentive crew will provide table service for hot meals. PUBLIC AREAS Like Le Boreal and its sisterships, Le Champlain has many common areas that are designed and equipped to meet all of your needs while preserving the intimacy of each passenger. A 140 m² reception area includes: A reception/concierge desk, An excursions desk, The ship's administrative services, The sales office, manned by our Guest Relations Officer, Our 50 m² boutique which sells clothing, jewellery, beauty products, postcards and various accessories, Toilets accessible to passengers with reduced mobility. A new hydraulic platform with adjustable height provides: Easier boarding than on any other cruise ship, Easier Zodiac embarkation and disembarkation for expeditions, Easier access to the sea for swimming and practising various water sports such as kayaking or paddle-boarding. A pool deck offering: A pool with a panoramic view, equipped with a counter-current swimming system, A pleasant solarium, An outdoor bar and lounge with armchairs and sofas. A 200 m² main lounge which can accommodate all of our passengers to share convivial moments and to host activities organised during the day or evening. Lastly, a theatre that seats 188, equipped with: The latest sound and lighting technology, A LED wall as the stage backdrop, for the projection of high-resolution images and videos. Please click the following links to read more about Ponant and the other Ponant



The Small Cruise Ship Collection
www.small-cruise-ships.com

01432 507 280 (within UK)

info@small-cruise-ships.com | small-cruise-ships.com



The Small Cruise Ship Collection

www.small-cruise-ships.com



small-cruise-ships.com

info@small-cruise-ships.com



cruise ships.



The Small Cruise Ship Collection

www.small-cruise-ships.com

01432 507 280 (within UK)

info@small-cruise-ships.com | small-cruise-ships.com



The Small Cruise Ship Collection

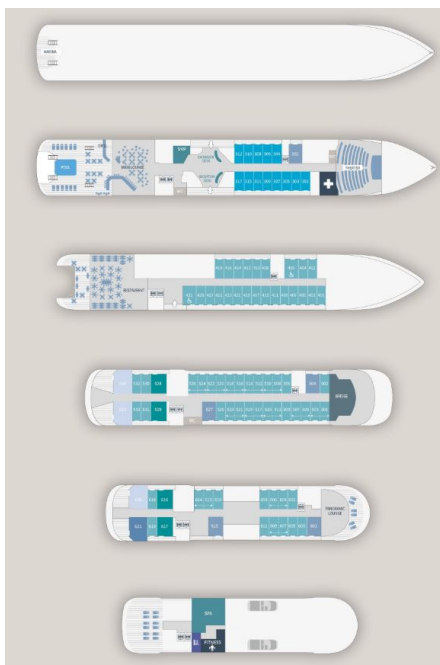
www.small-cruise-ships.com



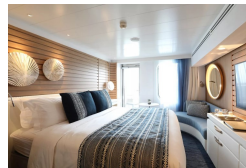
small-cruise-ships.com

info@small-cruise-ships.com

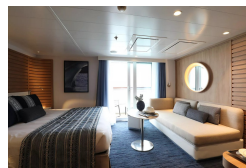
INSIDE YOUR SHIP



Deluxe Stateroom

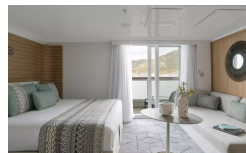


Deluxe Suite



Deluxe Suite Deck 3

Deluxe Suite Deck 4



Deluxe Suite Deck 5

Deluxe Suite Deck 6

Grand Deluxe Suite

Grand Deluxe Suite Deck 5

Grand Deluxe Suite Deck 6

Owner's Suite

Prestige Deck 4

Prestige Deck 5

Prestige Deck 5 Suite

Prestige Deck 6

Prestige Deck 6 Suite

Prestige Stateroom Deck 4

Prestige Stateroom Deck 5

Prestige Stateroom Deck 6

Prestige Suite Deck 5

Prestige Suite Deck 6



The Small Cruise Ship Collection

www.small-cruise-ships.com



small-cruise-ships.com

info@small-cruise-ships.com

Privilege Suite

Privilege Suite Deck 5



The Small Cruise Ship Collection

www.small-cruise-ships.com

01432 507 280 (within UK)

info@small-cruise-ships.com | small-cruise-ships.com



The Small Cruise Ship Collection

www.small-cruise-ships.com



small-cruise-ships.com

info@small-cruise-ships.com

PRICING

06-Jul-2025 to 15-Jul-2025

Privilege Suite	£21820 GBP pp
Prestige Suite Deck 5	£19720 GBP pp
Prestige Stateroom Deck 6	£10260 GBP pp
Deluxe Stateroom	£8250 GBP pp
Owner's Suite	£25250 GBP pp
Prestige Stateroom Deck 4	£9210 GBP pp
Prestige Stateroom Deck 5	£9690 GBP pp
Prestige Suite Deck 6	£20770 GBP pp
Grand Deluxe Suite	£24010 GBP pp
Deluxe Suite	£14460 GBP pp

06-Jul-2026 to 16-Jul-2026

Privilege Suite Deck 5	£16719 GBP pp
Privilege Suite Deck 6	£16719 GBP pp
Deluxe Suite Deck 4	£11205 GBP pp
Prestige Deck 4	£7259 GBP pp
Prestige Deck 5 Suite	£15145 GBP pp
Grand Deluxe Suite Deck 5	£18375 GBP pp
Deluxe Stateroom	£6539 GBP pp
Prestige Deck 6 Suite	£15929 GBP pp
Prestige Deck 6	£8049 GBP pp
Prestige Deck 5	£7619 GBP pp
Grand Deluxe Suite Deck 6	£18375 GBP pp
Deluxe Suite Deck 6	£11205 GBP pp
Deluxe Suite Deck 5	£11205 GBP pp
Deluxe Suite Deck 3	£11205 GBP pp

ADDITIONAL CHARGES:

Port Taxes 670 AUD pp



www.small-cruise-ships.com

01432 507 280 (within UK)

info@small-cruise-ships.com | small-cruise-ships.com